



**D** DURKAN

 DEFINITY

**SAAYA**

*By Arnavaz Barshan*

## SAAYA Collection

# SAAYA

Meaning “shadow” in Hindi, the Saaya Collection contemplates how abstract shadows create visual depth, making simple forms appear dimensional. Loose nets, folded and crumpled paper and irregularly deconstructed chain links develop into soft, simple shapes that move away from rigid geometry. Versatile gray tones are the overriding hue, while opulent shades of gold and subtle neutral tones keep the designs fresh and ethereal. Durkan’s Definity technology brings Saaya to three-dimensional life through precision sculpting technology: textured shadows appear and disappear, creating the new silhouettes of this 16 piece collection.



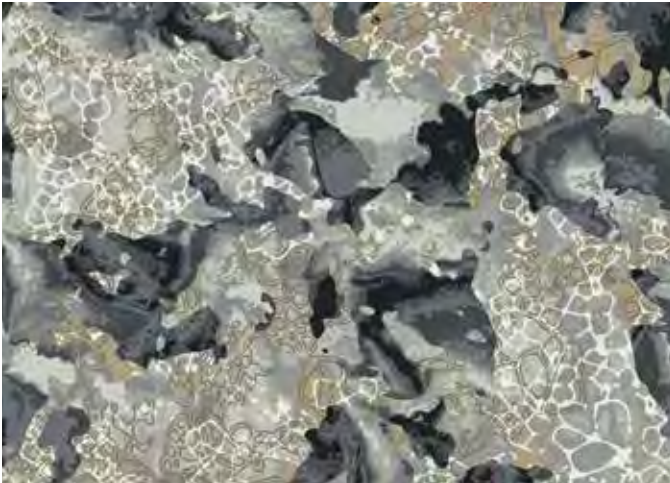
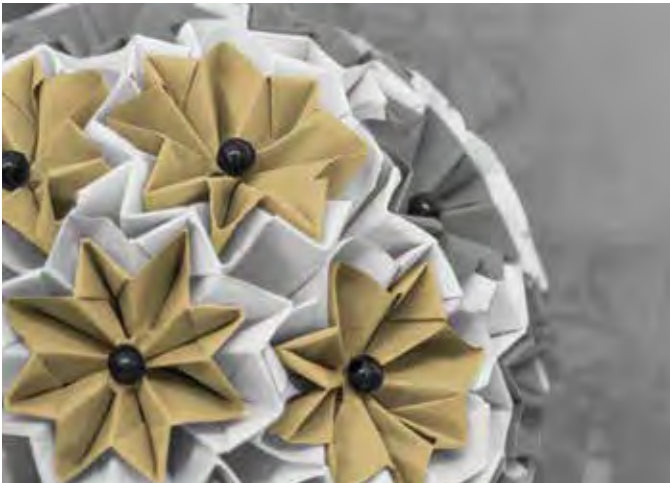
Saaya is featured in Durkan’s innovative Definity technology which redefines luxury performance with patterning and textures never before seen in the industry. Enhanced surface detailing provides more than twice the definition of any other high-end hospitality carpet. Durkan’s exclusive technology creates precision sculpted dimension for incredible visual and tactile experiences.



DURKAN. IMAGINE THAT.

SAAYA Inspiration

Top to bottom:  
QTW43659 15' (w) X 15' (l)  
QTW43666 15' (w) X 15' (l)  
QTW43662 7'6" (w) X 7'6" (l)



# Product Guide

Saaya is available in Definity, PDI (Print) and CYP constructions. Each product type utilizes a different manufacturing process which can yield variations in color and texture. Please refer to the guide below for specific color information.



## Definity

Durkan's innovative Definity technology is available in up to 12 colors and features our unique precision sculpted technology which explores and emphasizes dimensional effects.

|        |        |        |                   |         |         |          |          |        |
|--------|--------|--------|-------------------|---------|---------|----------|----------|--------|
| 1      | 2      | 3      | 4                 | 5       | 6       | 7        | 8        |        |
| 960011 | 090087 | 950006 | 080122            | 940006  | 090058  | 930009   | 930010   |        |
| 9      | 10     | 11     | 13                | 22      | 25      | 47       | 50       | 51     |
| 080193 | 070036 | 4002   | 080122/<br>4002DD | 090087L | 940006L | 930009LL | 070036LL | 4002LL |

Shown, right and opposite page: QTW47590

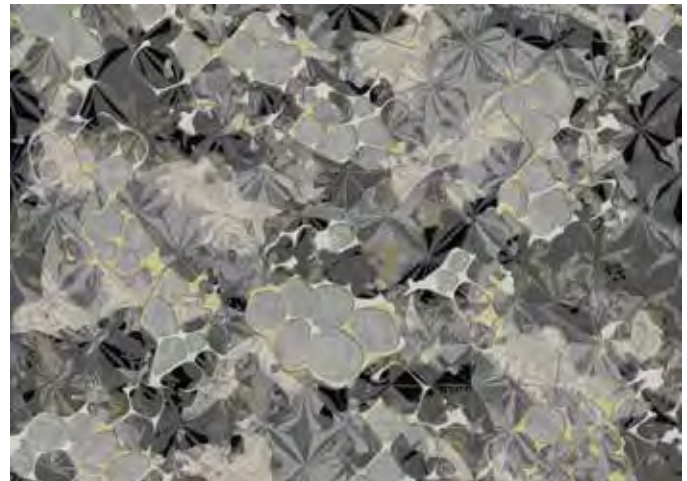


## PDI (Print)

Durkan's Precision Dye Injected (PDI) print construction offers a range of patterns available in 12 colors.

|      |      |     |      |     |     |
|------|------|-----|------|-----|-----|
| 1    | 2    | 3   | 4    | 5   | 6   |
| 7V13 | 3K2  | 5F2 | 3K7  | 3L2 | 319 |
| 7    | 8    | 9   | 10   | 11  |     |
| 3J10 | 7M13 | 5G3 | 2J11 | 3A5 |     |

Shown, right: D47730

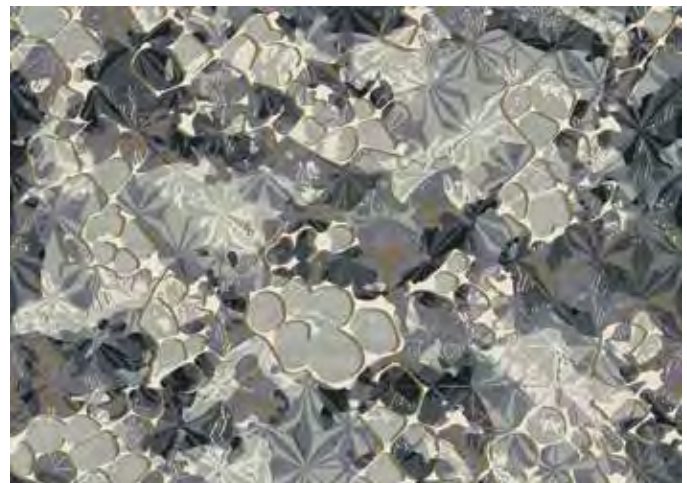


## CYP

Durkan's Computer Yarn Placement (CYP) construction offers a range of patterns available in 6 colors.

|         |         |         |         |         |        |
|---------|---------|---------|---------|---------|--------|
| 1       | 2       | 3       | 4       | 5       | 6      |
| 960011  | 090087  | 950006  | 080122  | 930009  | 080193 |
| 12      | 13      | 14      | 15      | 16      |        |
| 090087L | 950006L | 080122L | 930009L | 080193L |        |

Shown, right: UT48764



C: Cut, L: Loop, LL: Lower Loop, DD: Double Density



QTW47590  
15' (w) X 15' (l)

|        |        |        |        |        |        |        |        |        |        |      |                   |         |         |          |          |        |
|--------|--------|--------|--------|--------|--------|--------|--------|--------|--------|------|-------------------|---------|---------|----------|----------|--------|
| 1      | 2      | 3      | 4      | 5      | 6      | 7      | 8      | 9      | 10     | 11   | 13                | 22      | 25      | 47       | 50       | 51     |
| 960011 | 090087 | 950006 | 080122 | 940006 | 090058 | 930009 | 930010 | 080193 | 070036 | 4002 | 080122/<br>4002DD | 090087L | 940006L | 930009LL | 070036LL | 4002LL |

Also available in CYP & PDI (Print)





**QTW43672**  
45' (w) X 30' (l)

|        |        |        |        |        |        |      |        |        |                     |         |         |         |          |          |
|--------|--------|--------|--------|--------|--------|------|--------|--------|---------------------|---------|---------|---------|----------|----------|
| 1      | 2      | 3      | 4      | 5      | 6      | 7    | 9      | 11     | 14                  | 21      | 22      | 23      | 48       | 50       |
| 960011 | 090087 | 950006 | 080122 | 940006 | 090058 | 4002 | 080193 | 070036 | 080193/<br>070036DD | 960011L | 090087L | 950006L | 930010LL | 930009LL |

Also available in CYP & PDI (Print)





**QW43657**  
7'6" (w) X 15' (l)

|        |        |        |      |        |        |        |         |          |
|--------|--------|--------|------|--------|--------|--------|---------|----------|
| 1      | 2      | 3      | 4    | 5      | 6      | 7      | 26      | 46       |
| 960011 | 950006 | 090058 | 4002 | 930009 | 930010 | 070036 | 930010L | 930010LL |

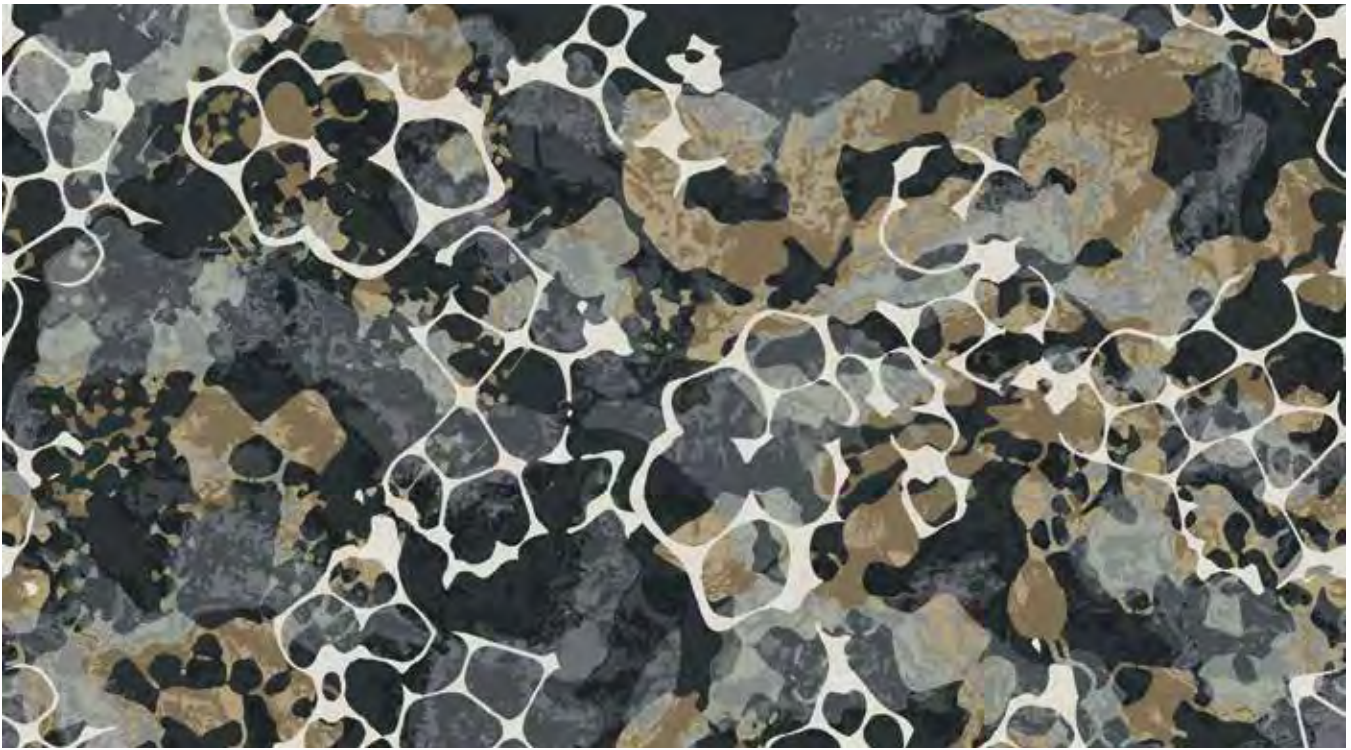


**QW43673**  
7'6" (w) X 7'6" (l)

|        |        |        |        |        |          |          |
|--------|--------|--------|--------|--------|----------|----------|
| 1      | 2      | 3      | 4      | 5      | 41       | 43       |
| 960011 | 090087 | 950006 | 940006 | 090058 | 960011LL | 950006LL |





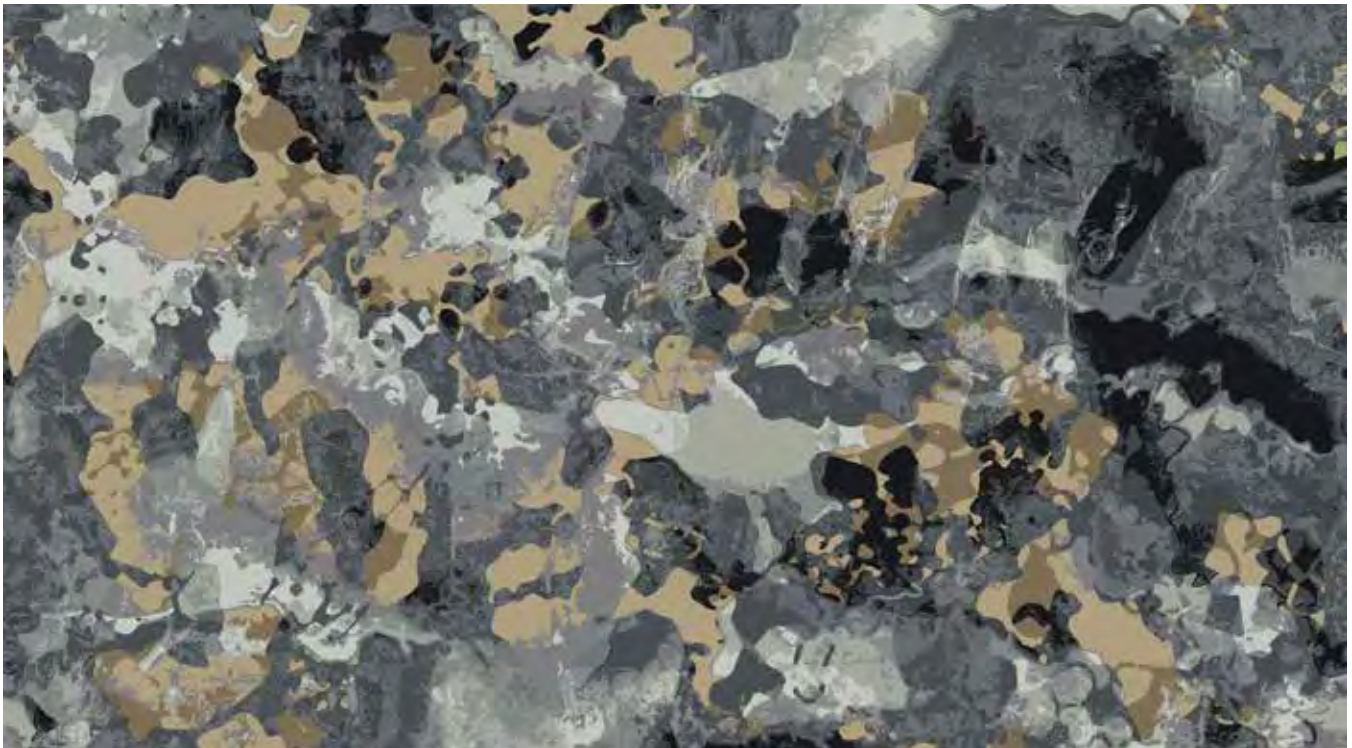


**QTW43658**  
15' (w) X 15' (l)

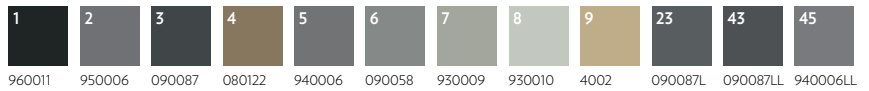


**QTW43660**  
15' (w) X 15' (l)





**QTW43661**  
15' (w) X 15' (l)



**QTW43662**  
7'6" (w) X 7'6" (l)





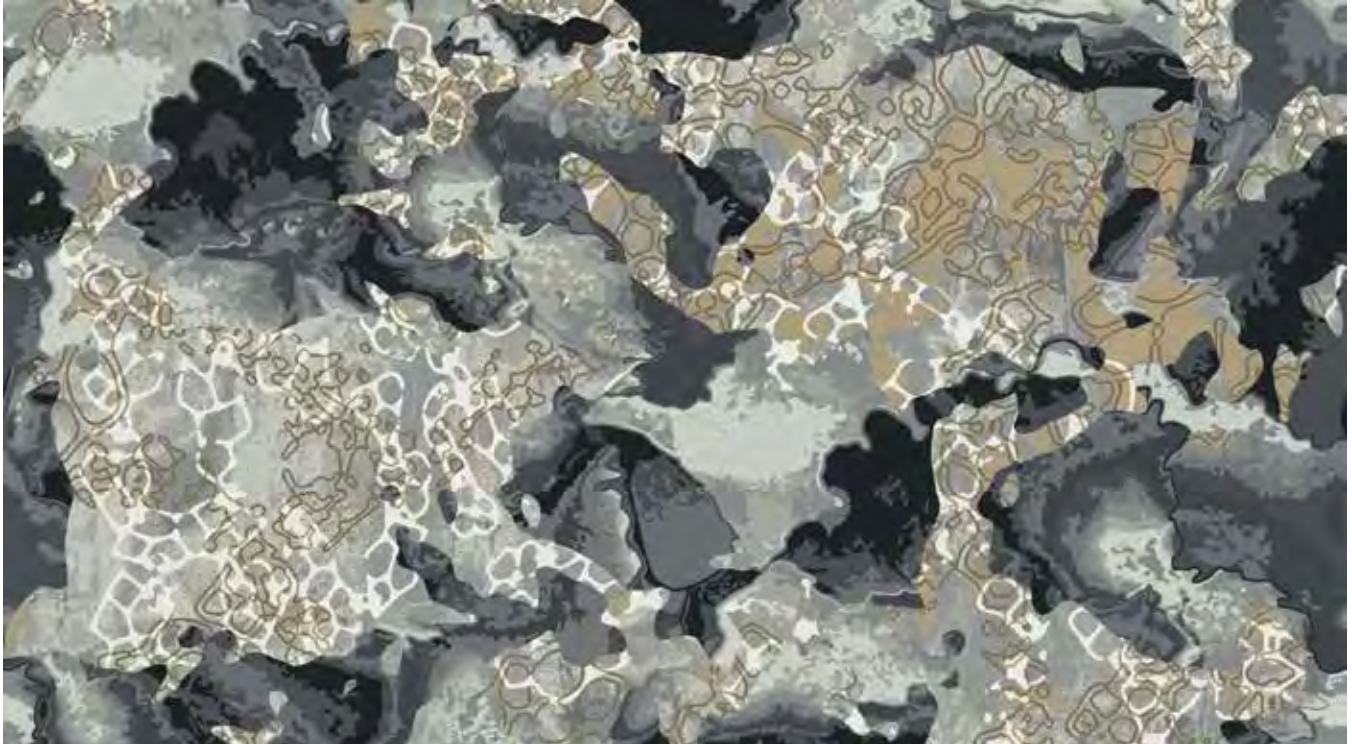
- 1  
960011
- 2  
090087
- 3  
950006
- 4  
940006
- 5  
080122
- 6  
090058
- 7  
930009
- 8  
930010
- 9  
080193
- 48  
930010LL

**QW43663**  
7'6" (w) X 15' (l) Corridor

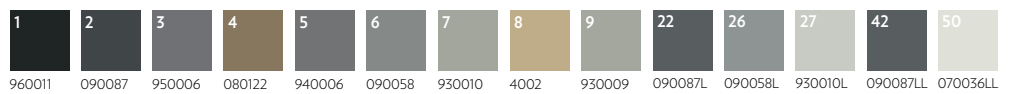
Also available in CYP & PDI (Print)



**QTW43670**  
15' (w) X 15' (l)



**QTW43666**  
15' (w) X 15' (l)





**QTW43671**  
15' (w) X 15' (l)

|        |        |        |        |        |        |      |        |        |         |         |
|--------|--------|--------|--------|--------|--------|------|--------|--------|---------|---------|
| 1      | 2      | 3      | 4      | 5      | 6      | 7    | 8      | 9      | 26      | 28      |
| 960011 | 090087 | 950006 | 930009 | 080122 | 090058 | 4002 | 070036 | 930010 | 090058L | 070036L |



**QTW43659**  
15' (w) X 15' (l)

|        |        |        |      |        |        |         |         |         |          |
|--------|--------|--------|------|--------|--------|---------|---------|---------|----------|
| 1      | 2      | 3      | 4    | 5      | 6      | 21      | 22      | 25      | 45       |
| 950006 | 940006 | 090058 | 4002 | 930009 | 930010 | 950006L | 940006L | 930009L | 930009LL |



4002



090058



940006



080122



950006



090087



960011

**QW43667**

7'6" (w) X 15' (l) Corridor



Also available in CYP & PDI (Print)



1  
070036

2  
930009

3  
090058

4  
950006

5  
960011

6  
4002

47  
940006LL

**QTW43675**  
15' (w) X 15' (l)  
Runner

1  
960011

2  
950006

3  
090058

4  
930010

5  
070036

6  
4002

47  
930009LL

**QTW43668**  
15' (w) X 15' (l)  
Door Drop



SAAYA is featured in Durkan's innovative Definity technology which redefines luxury performance with patterning and textures never before seen in the industry. Enhanced surface detailing provides more than twice the definition of any other high-end hospitality carpet. Durkan's exclusive technology creates precision sculpted dimension for incredible visual and tactile experiences.

The Saaya Collection is also available in PDI (Print) and CYP. Please contact your rep or visit [www.durkan.com](http://www.durkan.com) for more information.

SAAYA SLT000386



**DURKAN. IMAGINE THAT.**  
508 East Morris Street, Dalton, GA 30721  
(800) 241-4580 | [Durkan.com](http://Durkan.com)

A division of  Mohawk Group

DEFINITY | SYNTHESIS | PDI (PRINT) | CYP | TUFTED | CARPET TILE  
LVT | RUBBER | SHEET | LAMINATE | HARDWOOD | RUGS

