

On Line

Interdeco™

www.interface.com

United States Headquarters

1503 Orchard Hill Road
LaGrange, GA 30240
1.800.336.0225 ext.56511

Canadian Headquarters

233 Lahr Drive
Belleville, ON K8N 5S2
1.800.267.2149 ext.52128

Brazilian Headquarters

Rua Surubim, 577 - Conjuntos
73/74 7º Andar
04571-050 - São Paulo - SP
+ 55 11 2196 0900

Latin American Headquarters

Montes Urales # 415 Piso 6
Col. Lomas de Chapultepec
México City, D.F. 11000
Mexico
+ 52 55 6395 5100

CIM # IFS00603 10/2017



Mission Zero®

our promise to eliminate any
negative impact our company
may have on the environment
by the year 2020.

Interface®

On Line™

On Line is the new graphic standard for the floor with its pure color and bold proportions. Go for color blocking—create a big splash or try colors that clash. Explore the fundamentals of flattery—earthy shades are the perfect companions to ground a brighter hue.

Vivid or subdued, On Line has the right shape to support the design. The Skinny Planks™ installed in ashlar method will present a broadloom look but with all the pluses of modular. A mixed composition of colors (note: add other styles and tile dimensions, too!), will bring an entirely different energy to the interior. In On Line, there is a broad spectrum of possibilities in service to your design and the identity you've imagined for your client.





CARPET PRODUCT ON LINE COLOR 105263 TITANIUM INSTALLED HERRINGBONE
LVT PRODUCT LEVEL SET™ | TEXTURED WOODGRAINS
COLOR A00404 DISTRESSED BLACK WALNUT INSTALLED ASHLAR

www.interface.com



Interdeco™

PRODUCT ON LINE COLOR 105262 PIGEON INSTALLED ASHLAR



Specifications

Modular, 25cm x 1m	138700AK00
Backing System	GlasBac® Tile
Yarn Manufacturer	Aquafil
Yarn System	100% Recycled Content Type 6 Nylon
Color System	100% Solution Dyed
Construction	Tufted Textured Loop
Lifetime Antimicrobial	Intersept®
Soil/Stain Protection	Protekt ² ®
Pile Thickness	0.100 in., 2.5 mm
Pile Density	6,480
Total Recycled Content	72%
Indoor Air Quality	CRI Green Label Plus #GLP0820



PRODUCT ON LINE COLORS 103786 INK, 105272 BERRY INSTALLED PATTERN BY TILE

On Line™ Colorline



103785 BISCUIT



103784 TOPAZ



103782 COFFEE



105252 LICHEN



103781 LOAM



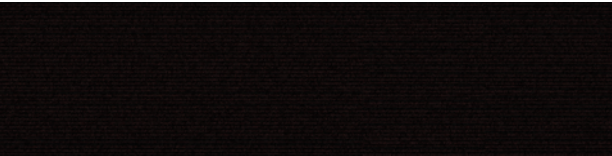
105255 SMOKE



103783 MUSHROOM



103780 PEAT



105257 ESPRESSO



105258 DRIFTWOOD



103789 SAGE



103787 PEWTER



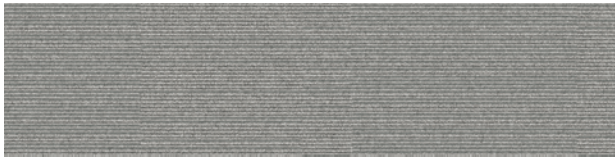
105259 FOG



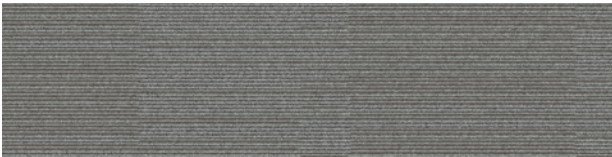
105260 GRANITE



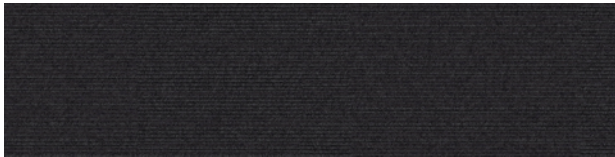
103788 PEPPER



103791 CLOUD



103790 STONE



105261 STORM



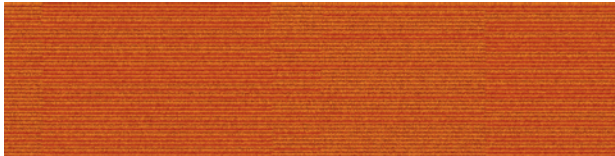
105262 PIGEON



105263 TITANIUM



103786 INK



105834 PERSIMMON

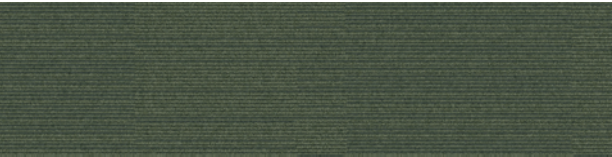


105835 LEAF



105836 EUCALYPTUS

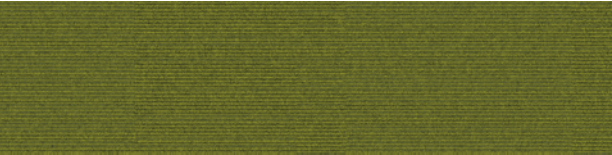
On Line™ Colorline



103796 FOREST



105264 GRASS



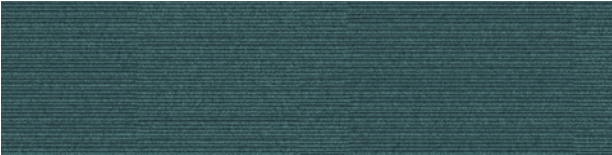
103798 LIME



103792 PEACOCK



105265 EMERALD



103794 LAGOON



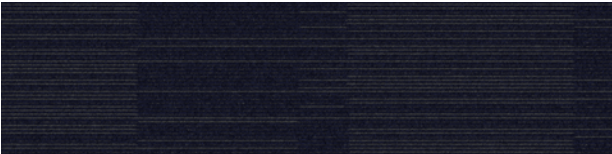
103795 OCEAN



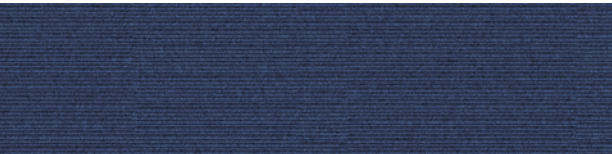
103797 AZURE



105266 AQUAMARINE



103793 INDIGO



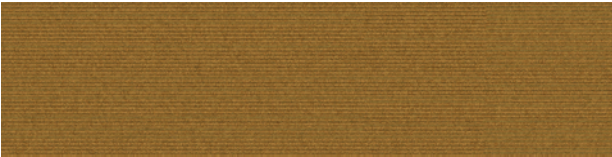
105267 COBALT



103799 LAPIS



103800 MUSTARD



105268 CITRON



105269 MARIGOLD



105270 ORANGE



103803 MANDARIN



103802 CANARY



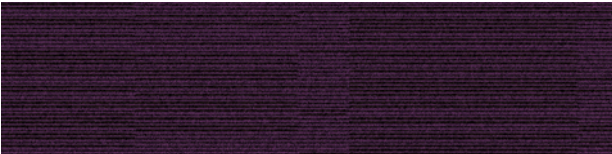
105271 RUST



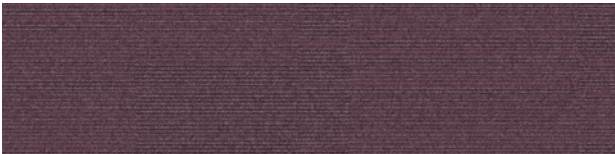
105272 BERRY



103801 POPPY



105273 PURPLE



105274 IRIS



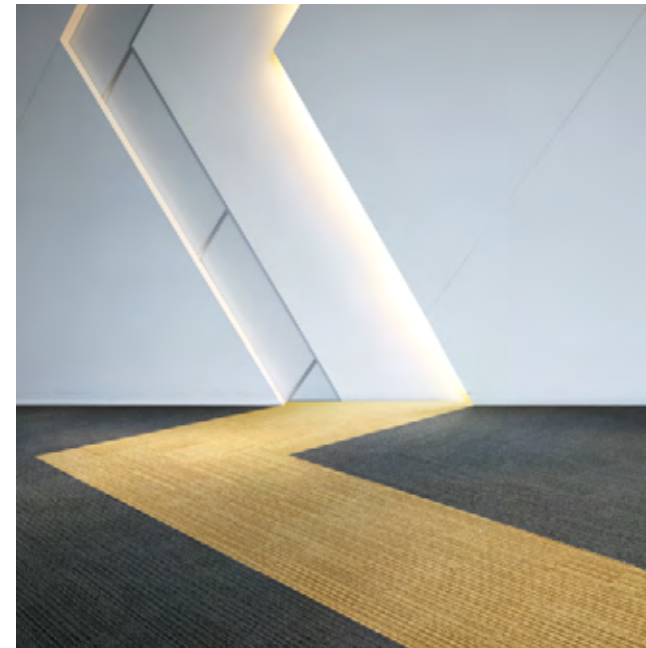
105275 MAGENTA



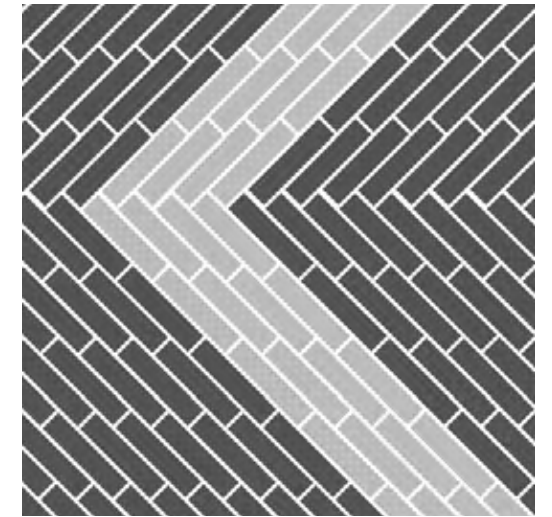


CARPET PRODUCT ON LINE COLOR 103793 INDIGO **INSTALLED** ASHLAR
LVT PRODUCT LEVEL SET | NATURAL STONES COLOR A00103 COOL IMPALA MARBLE
INSTALLED NON DIRECTIONAL

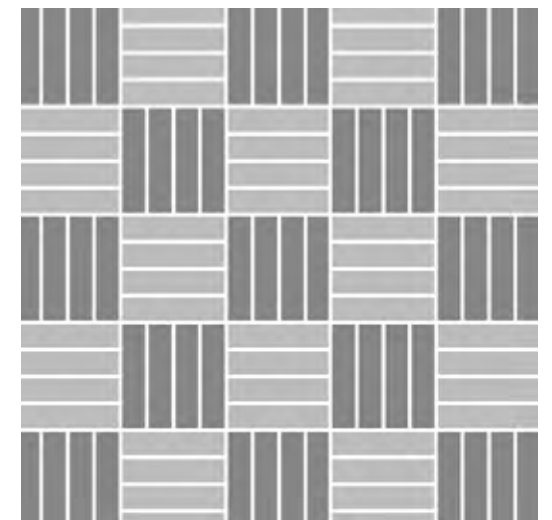
Design Ideas Below are floor layouts showing how to create the design ideas shared in several of the images featured in this brochure.



PRODUCT ON LINE COLORS 103787 PEWTER, 105269 MARIGOLD **INSTALLED** PATTERN BY TILE



PRODUCT ON LINE COLORS 105260 GRANITE, 105261 STORM **INSTALLED** PATTERN BY TILE



Design Ideas Below are floor layouts showing how to create the design ideas shared in several of the images featured in this brochure.



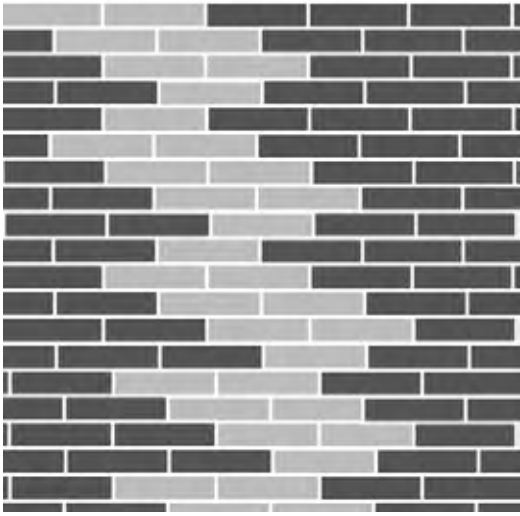
PRODUCT ON LINE COLORS 105261 STORM, 105260 GRANITE, 105259 FOG INSTALLED PATTERN BY TILE



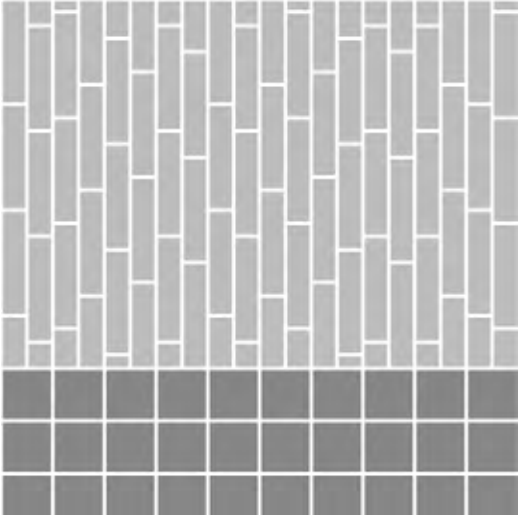
CARPET PRODUCT ON LINE COLOR 105263 TITANIUM INSTALLED HERRINGBONE
LVT PRODUCT LEVEL SET | TEXTURED WOODGRAINS
COLOR A00404 DISTRESSED BLACK WALNUT INSTALLED ASHLAR



PRODUCT ON LINE COLORS 103786 INK, 105272 BERRY INSTALLED PATTERN BY TILE



CARPET PRODUCT ON LINE COLOR 103793 INDIGO INSTALLED ASHLAR
LVT PRODUCT LEVEL SET | NATURAL STONES COLOR A00103 COOL IMPALA MARBLE INSTALLED NON DIRECTIONAL



Why Our Modular Carpet?



Modular Carpet Tile

Performance and Flexibility. Interface's standard backing systems set the industry standard for modular performance. Tiles stay on the floor withno upcurl, no tapping and no ripplingeffect, yet are easy to selectively replace. Our modular carpet is also easier to handle, install and maintain than bulky roll carpet. And, it installs with less waste so you save time and money — 3-4% for typical modular carpet compared to an average waste factor of 14% for traditional roll carpet.



Cool Floor™

The Low Carbon Option. Help stop climate change. ALL Interface modular flooring sold in North America is third party verified climate neutral Cool Floor. We start by using low-carbon materials and manufacturing processes, then Cool Floor zeros out all remaining greenhouse gas (GHG) emissions associated with the entire life cycle of your flooring, from raw material extraction through use and recycling.



TacTiles®

No Glue Installation. Our revolutionary TacTiles installation system eliminates the need for glue, adhering tiles securely together to form a floor that “floats” for greater flexibility, easier replacement and long-term performance. The result? Less mess, less waste and virtually no VOCs, not to mention an environmental footprint that is over 90% lower than that of traditional glue adhesives.



Intersept®

Mold Protection. Our proprietary preservative, Intersept, protects our modular carpet against mold growth and odor-causing bacteria — guaranteed. Intersept treated carpet, with proper maintenance, shows no mold or bacterial growth when tested per the ASTM E2471 Standard Test Method. Intersept is EPA approved for safe use in carpet, water insoluble and contains no halogens, heavy metals, phenols or formaldehyde.



ReEntry®

Recyclable is Now a Reality. Through our ReEntry program and partnerships with our fiber suppliers and recycling centers throughout North America, separated Type 6 and 6,6 nylon are recycled into new 6 and 6,6 nylon, while separated GlasBac®, GlasBacRE and similar competitor backings are recycled into new GlasBacRE non-virgin PVC backing using our Cool Blue™ technology. The result? Products with up to 89% total recycled content, including as much as 27% post-consumer content.



Sustainable Choice

Environmental Responsibility. More than 95% of Interface products manufactured in the Americas carry the GreenCircle Certified Environmental Facts label, which has verified that standard Interface products are manufactured using 99% renewable energy and offer a minimum of 66% and 80% total recycled content when backed with GlasBac and GlasBacRE backing respectively.

Samples

Order samples at www.interface.com. You'll receive email order confirmations, 24/7 access to order status and more. Not near a computer? You can also request samples by calling one of the numbers below.

United States 1.877.605.1500	Canada 1.866.398.3192
Brazil + 55 11 2196 0900	Latin America + 52 55 6395 5100

www.interface.com

- Register at www.interface.com to:
- Browse products and order samples
 - View carpet in a variety of room scenes
 - Browse floor designs, change colors, view as a grid or in a room, download and share
 - Use our LEED Calculator
 - Check order status and inventory availability
 - Sign up to get the latest information on Interface products and news

InterCircle™ Sample Return

Help us close the loop on the carpet sampling process. Through our InterCircle Sample Return program, sample materials stay out of the landfill and are re-used as samples until it is time to recycle them into new carpet. By reducing sample production material and diverting old materials from the landfill, we can reduce our overall environmental footprint.

Call 1.877.605.1500 (U.S.) or 1.866.398.3192 (Canada) to order a sample return bag with a prepaid return label.

Third Party Certification



Cool Floor – Our third party verified carbon offset program zeroes out all greenhouse gas (GHG) emissions associated with the entire life cycle of your flooring.



Environmental Product Declaration (EPD) – A statement of product ingredients and environmental impacts over the entire life cycle of a product. A comprehensive life cycle assessment (LCA) is performed to ISO standards to develop an EPD, after which both the EPD and LCA must be third party verified.



Sustainable Assessment for Carpet – The only carpet sustainability standard in North America that evaluates the environmental impact of carpet for its entire lifecycle.



CRI Green Label Plus – An independent testing program that identifies carpet and adhesives with very low emissions of VOCs to help improve indoor air quality.

All product specifications reflect averages derived from product sample testing, are subject to normal manufacturing and testing tolerances and inherent pattern variances, and may be changed without notice. For more information about these and other important attributes of the product(s) described herein, including recycled content and product warranty information, please see www.interface.com/disclaimer.



Printed on 50% post consumer waste (PCW) fiber manufactured using wind power.

We have tried our very best to accurately represent product colors. However, due to the nature of printed materials, color of actual products may vary slightly. Please request a sample to see actual product color.