

VIVID PALETTE
CARPET COLLECTION



COLOR EXTRACTED FROM NATURE.

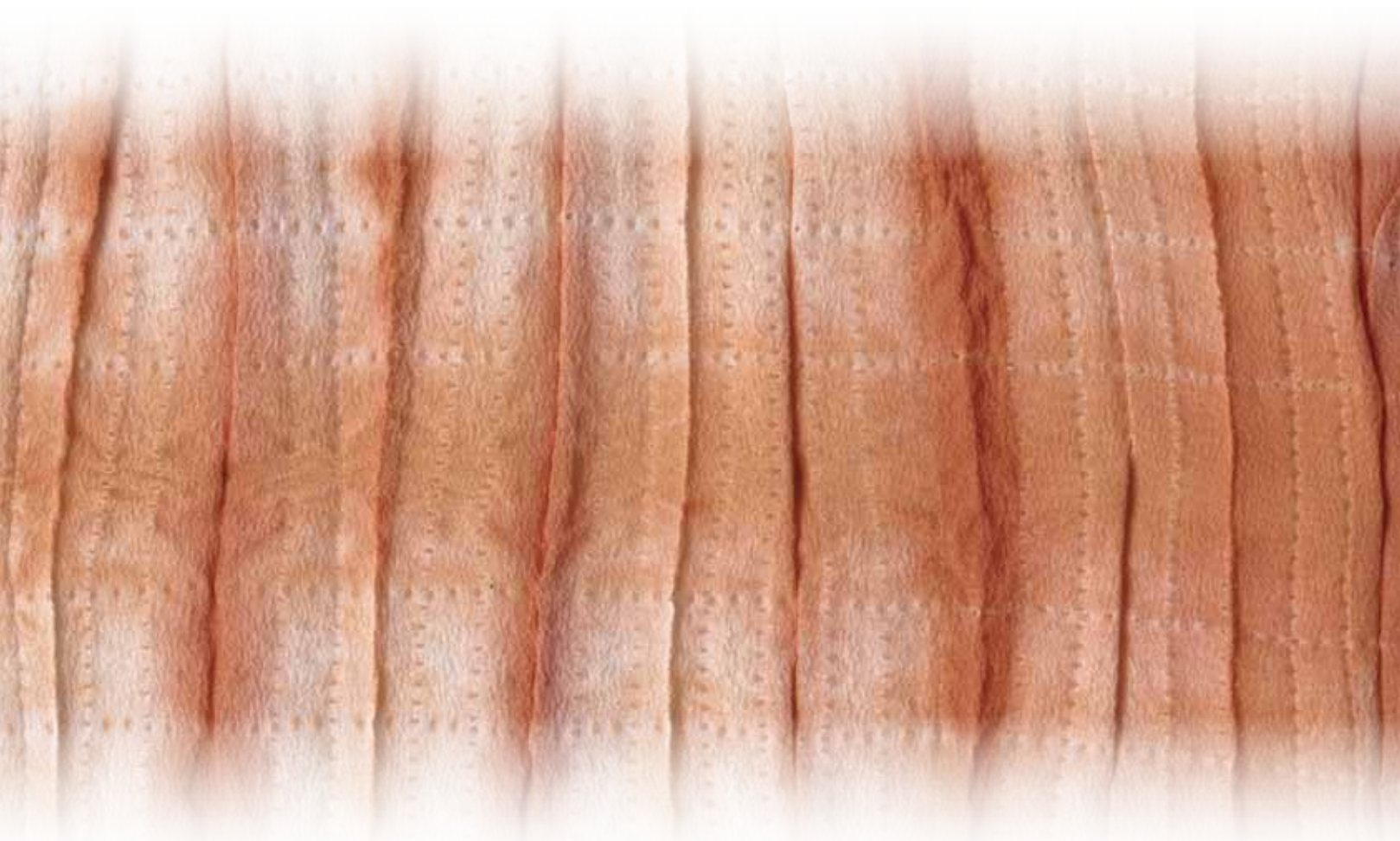


AN INTRICATE MERGER WITH TEXTURE.

A GLORIOUS EXPLORATION OF HOW ONE AFFECTS THE OTHER.
WOVEN, TWISTED, BUNDLED, DIPPED AND DYED. THE RESULT IS UNPREDICTABLE, RANDOM, BEAUTIFUL.
THIS IS THE FABRIC OF NATURE AND NURTURE, REINTERPRETED FOR THE ENVIRONMENT WITHIN.



WE CHALLENGED SAVANNAH COLLEGE OF ART & DESIGN STUDENTS TO CREATE ORIGINAL FIBER ART USING NATURAL-DYE TECHNIQUES. THE OVER-ARCHING THEMES FROM THEIR WORK BECAME THE INSPIRATION FOR THE COLLECTION.



INSPIRATION: FOLD & BUNDLE TECHNIQUE
THIS TECHNIQUE RESULTS IN A FABRIC CREATED FROM FOLDING,
STITCHING AND BUNDLE-DYEING WITH RUST AND EUCALYPTUS.

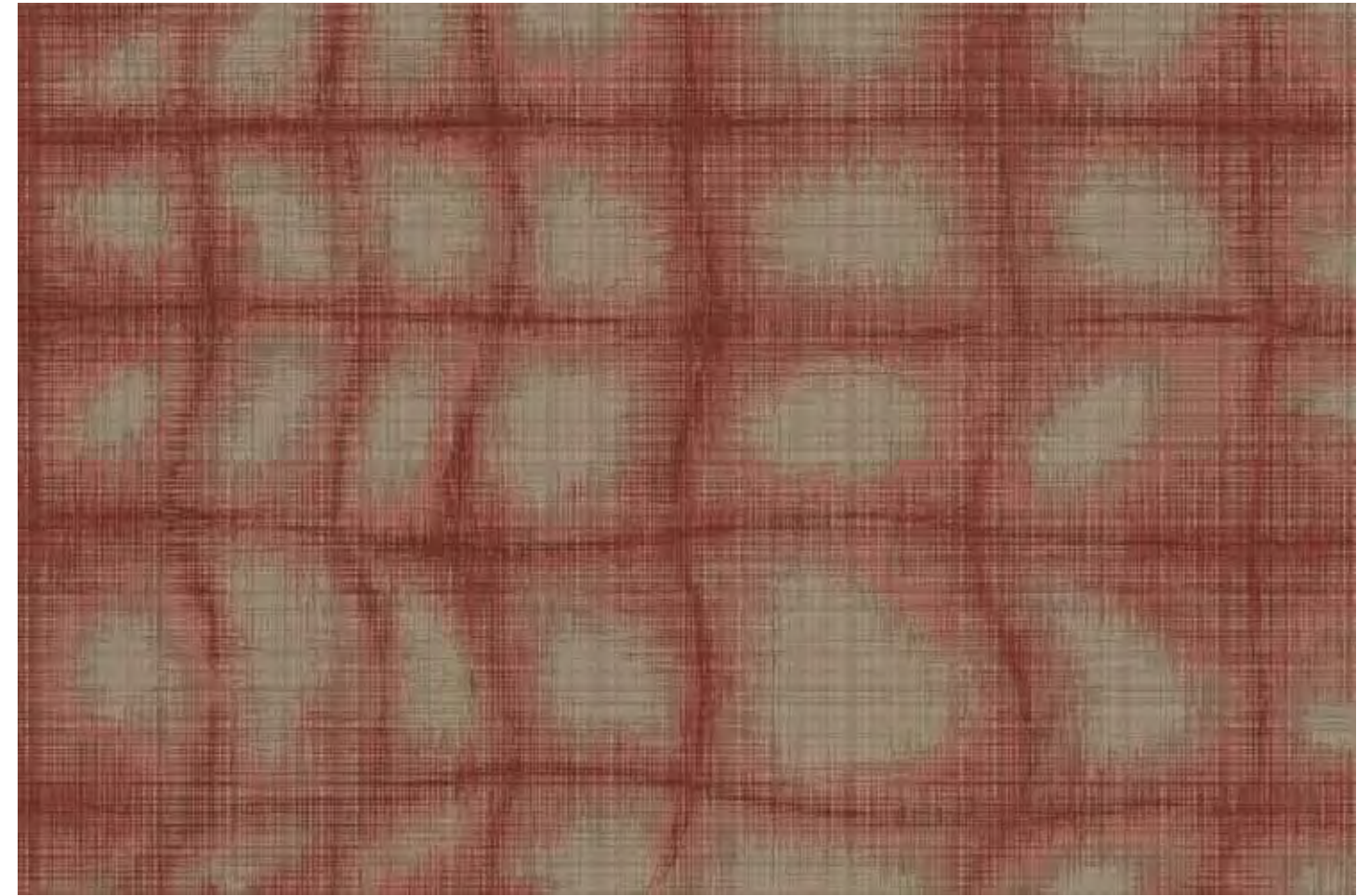




87BR1J | REPEAT: 6"W x 9"L



G50 A27 A28 A57 L10 L9 L8



87AR1J | REPEAT: 6"W x 9"L



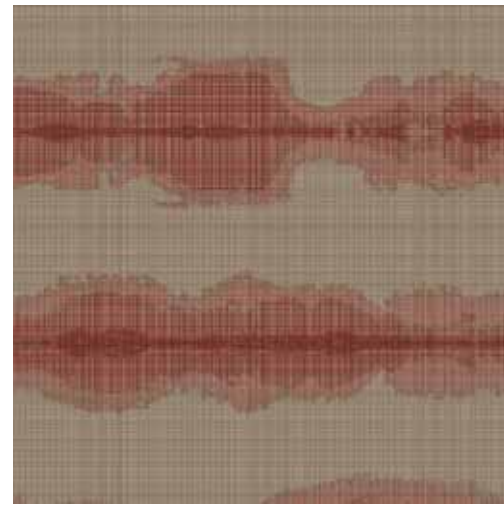
G50 A27 A28 A57 L10 L9 L8



88GF1J | REPEAT: 36"W x 36"L



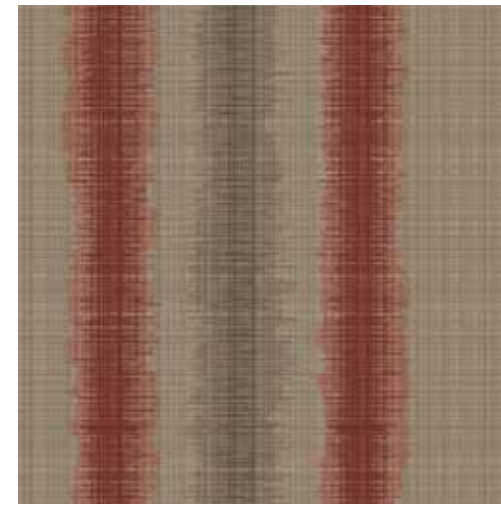
G50 A27 A28 A57 L10 L9 L8



88KF1J | REPEAT: 48"W x 48"L



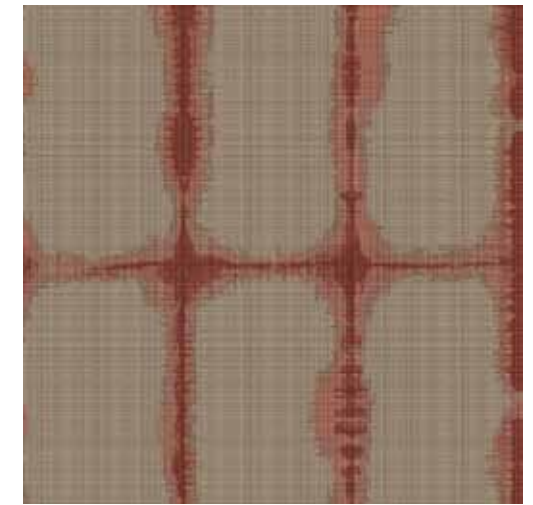
G50 A27 A28 A57 L10 L9 L8



88DF1J | REPEAT: 72"W x 96"L



G50 A27 A28 J53 A29 L10 L9 L8



88JF1J | REPEAT: 48"W x 48"L



G50 A27 A28 A57 L10 L9 L8



Y5746 | REPEAT: 24"W x 24"L

A 618o

B 5657D

A 618o

B 58o2D

Y5739 | REPEAT: 48"W x 48"L

COLOR BLEEDS THROUGH TEXTURE LIKE DYE ESCAPING THROUGH AN OPEN WEAVE.

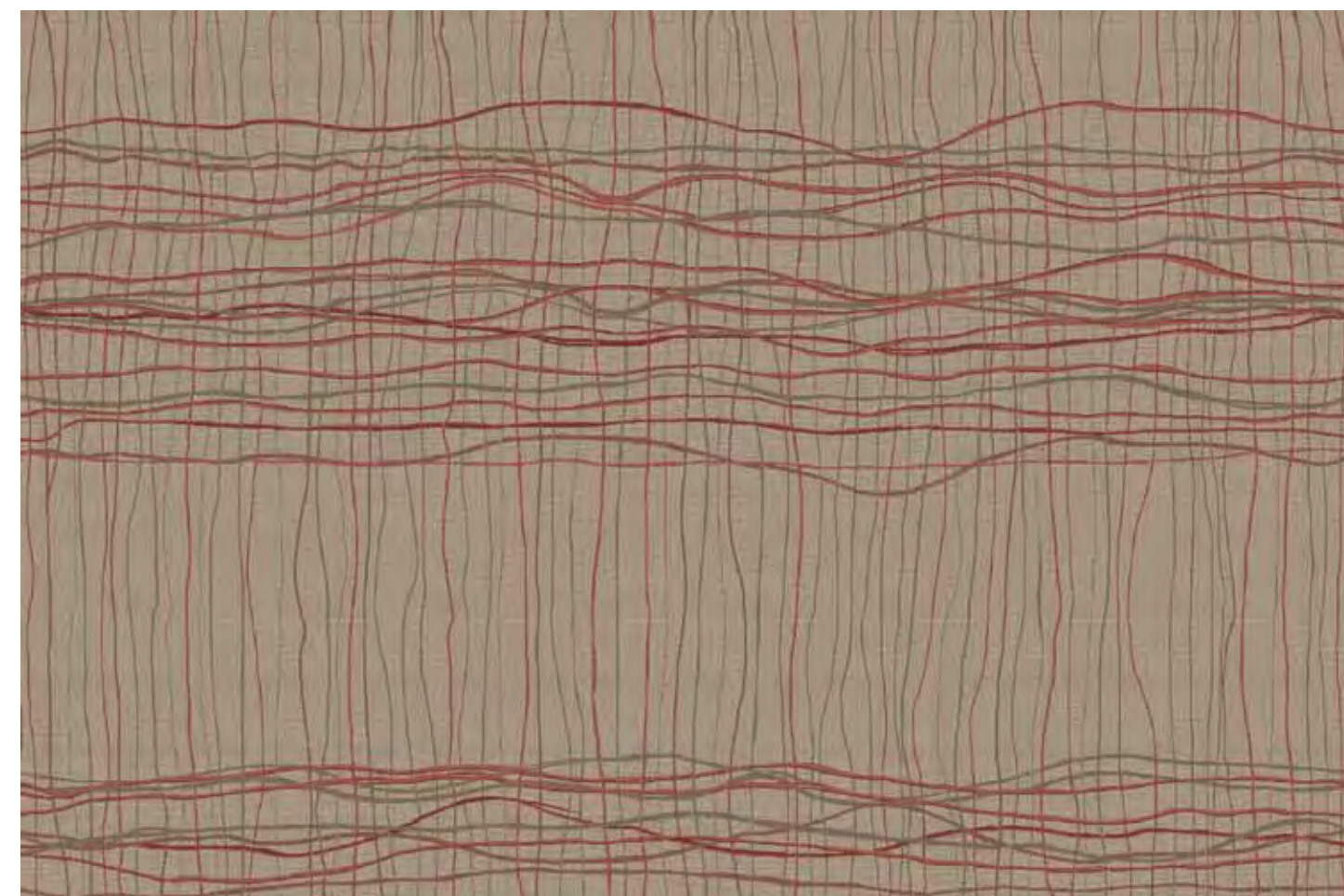
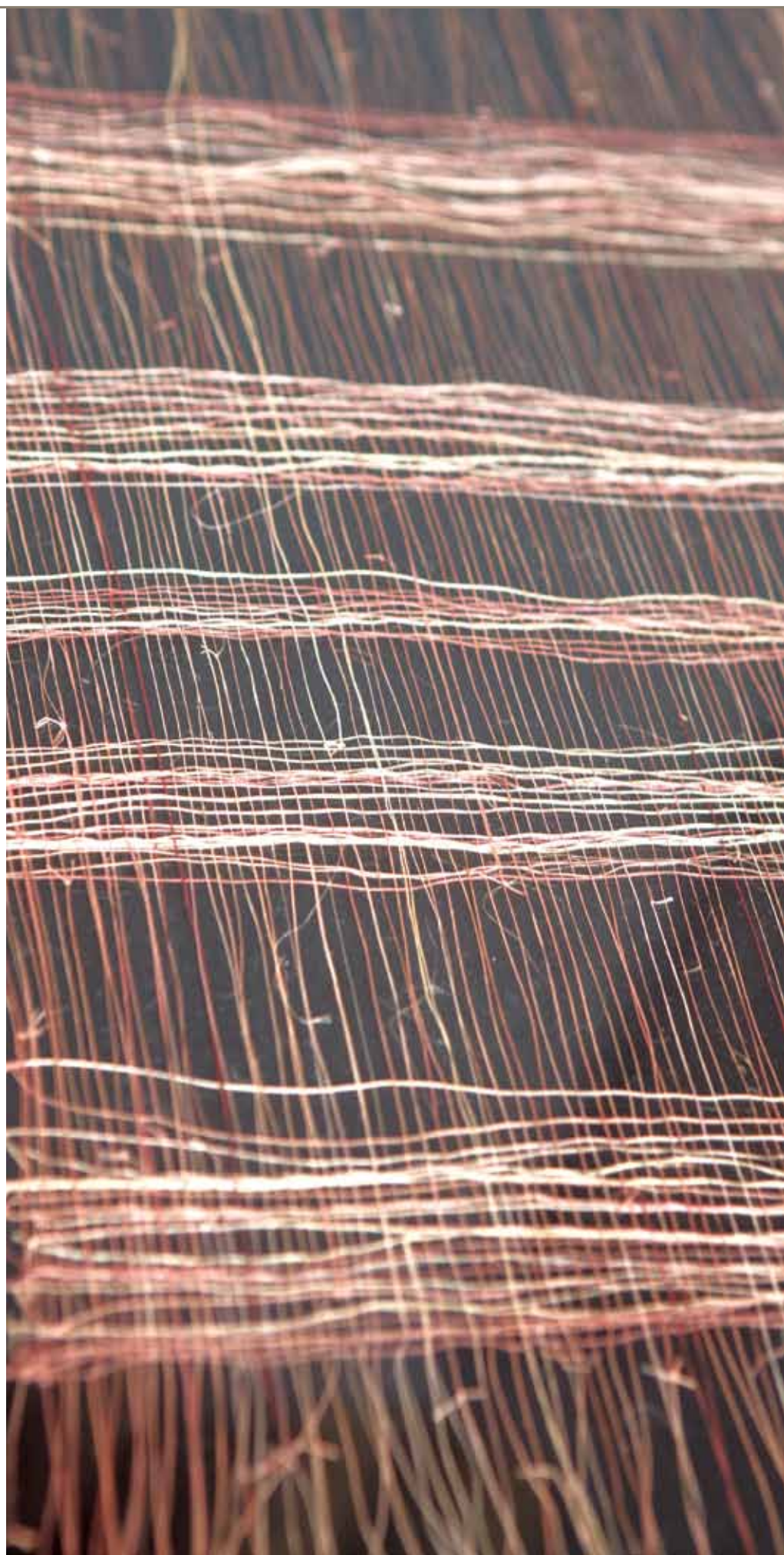
FOLD & BUNDLE TECHNIQUE



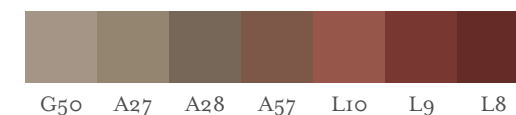
Interdeco™

THE ANCIENT ART OF NATURAL DYEING INSPIRES A PATTERN THAT IS AT ONCE UNDENIABLY MODERN.

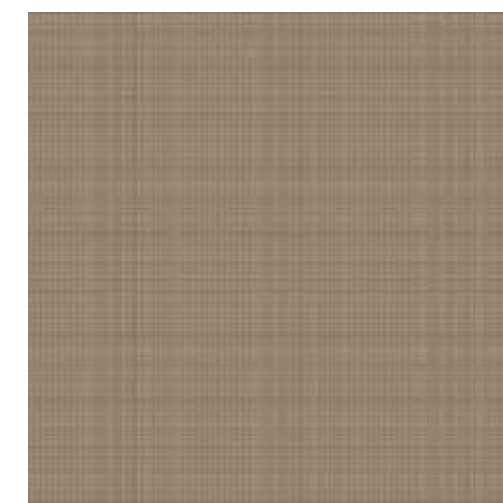
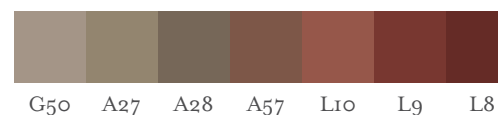
INSPIRATION: CABUYA TECHNIQUE
 A SCAD STUDENT CREATED THIS
 COSTA RICAN FIBER ART FROM
 DELICATELY WOVEN CABUYA FIBER.
 THE DESIGN INSPIRATION MADE ITS
 WAY INTO A CARPET PATTERN THAT
 BEARS ITS NAME.



87DR1J | REPEAT: 6"W x 9"L



88FF1J | REPEAT: 24"W x 24"L



88HF1J | REPEAT: 12"W x 12"L





Interdeco™

Y5742 | REPEAT: 48"W x 48"L

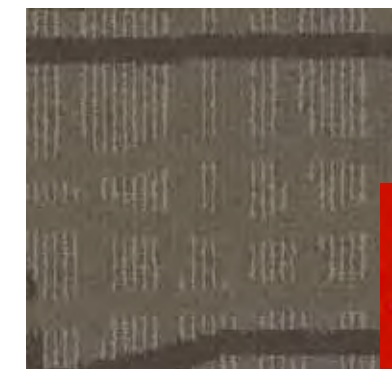
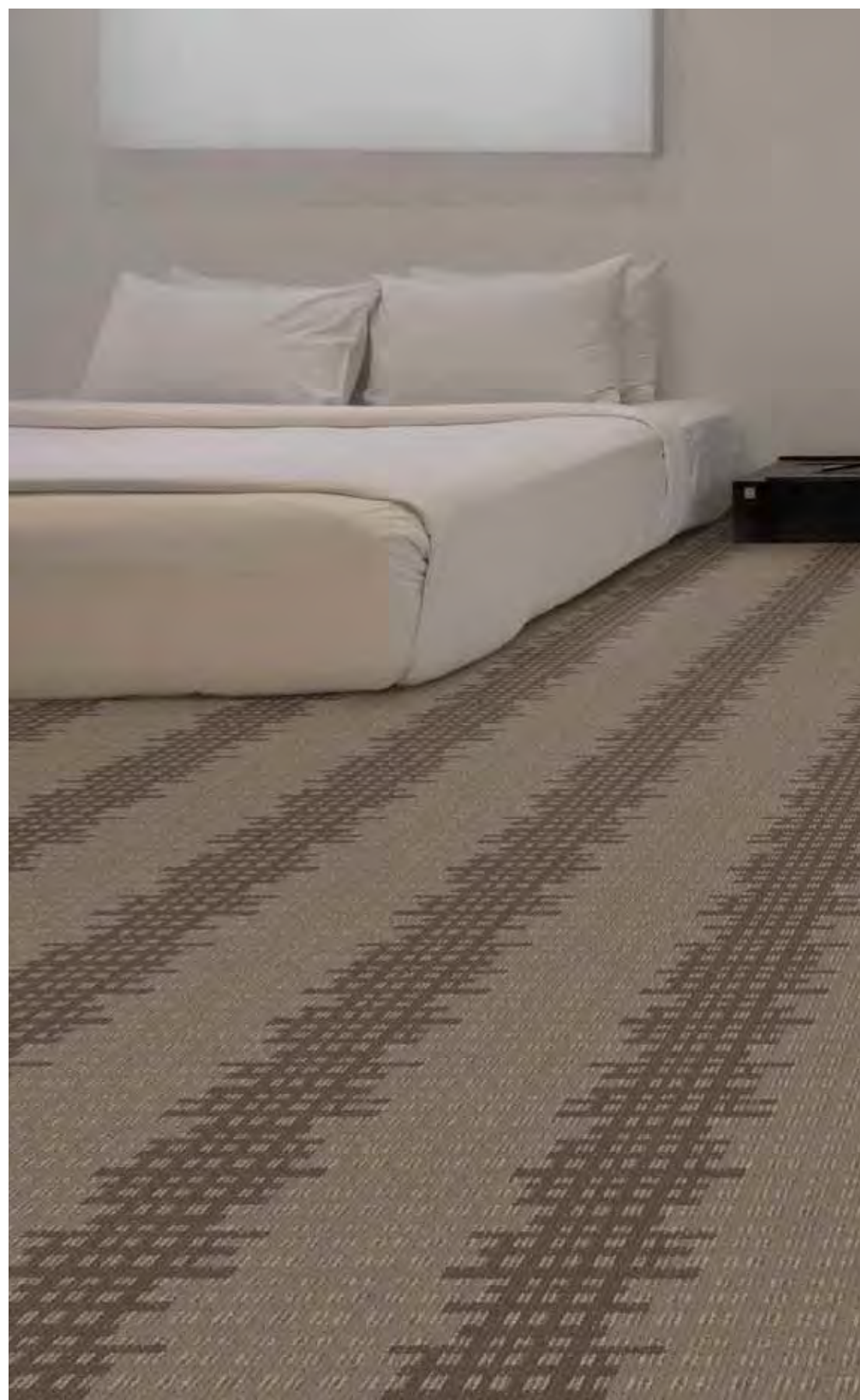
A 6180

B 5802D

A 6180

B 5657D

Y5743 | REPEAT: 48"W x 48"L



Interdeco™

Y5744 | REPEAT: 12" x 24"

A 6180

B 5657D

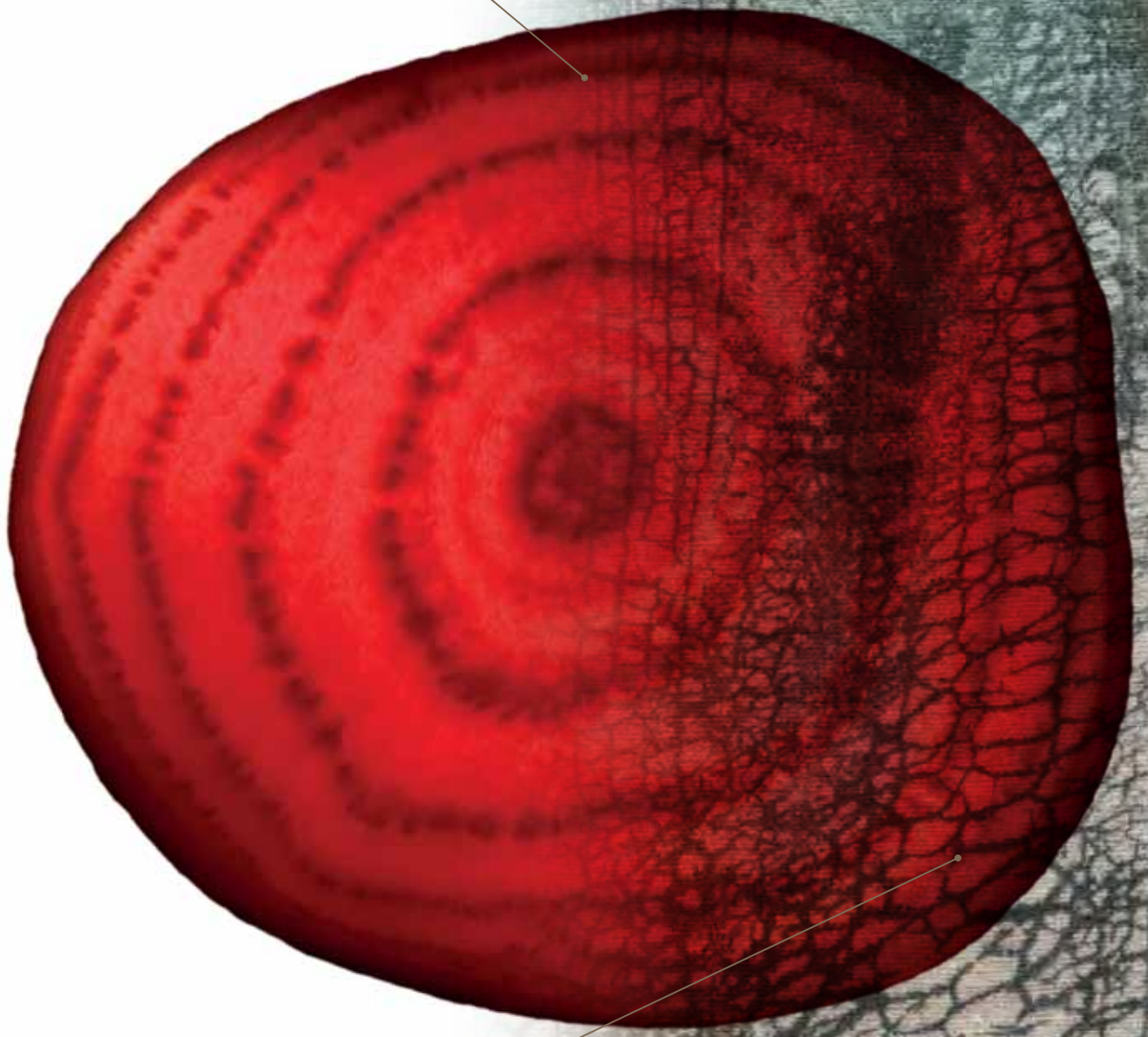
A 6180

B 5657D

Y5745 | REPEAT: 48"W x 48"L

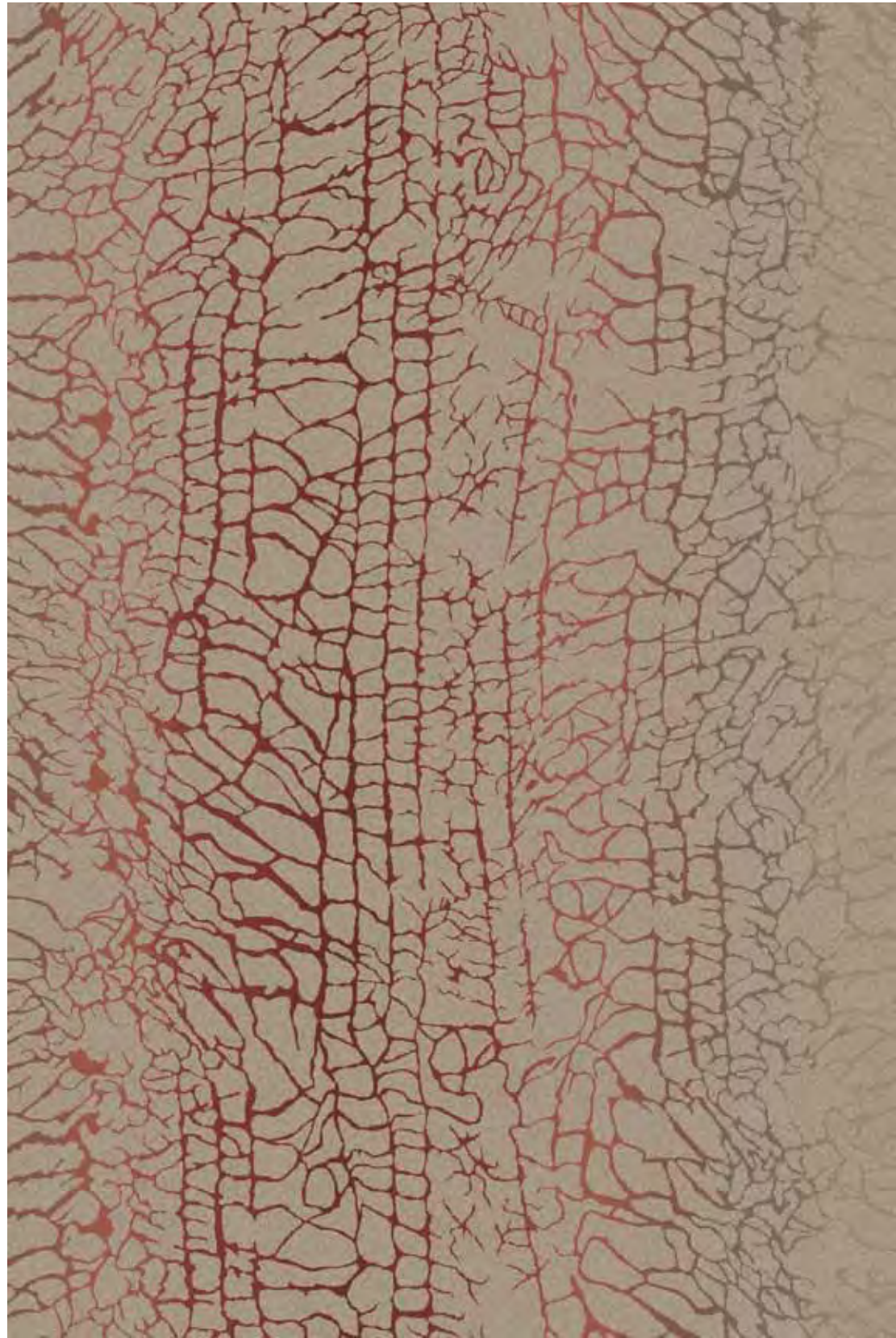
INSPIRATION:
POTATO DEXTRIN TECHNIQUE
POTATO DEXTRIN IS A
TRADITIONAL HAND-DYEING
RESIST TECHNIQUE THAT RESULTS
IN A BOLD, GRAPHIC PATTERN.

THE AMERICAN SOUTHEAST BEET
SERVED AS OUR COLOR INSPIRATION.

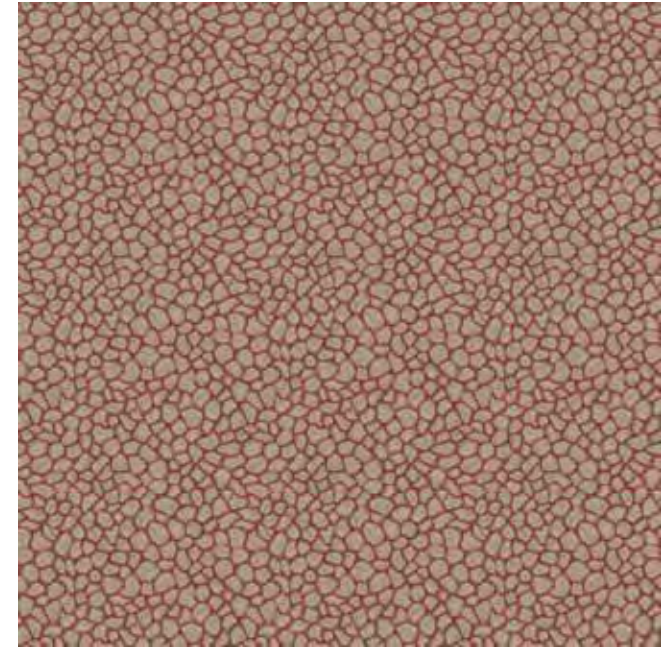
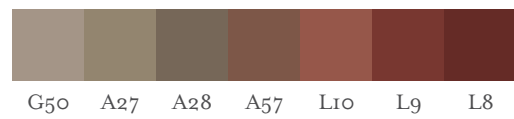


THE INTERSECTION OF PATTERN AND DYE.

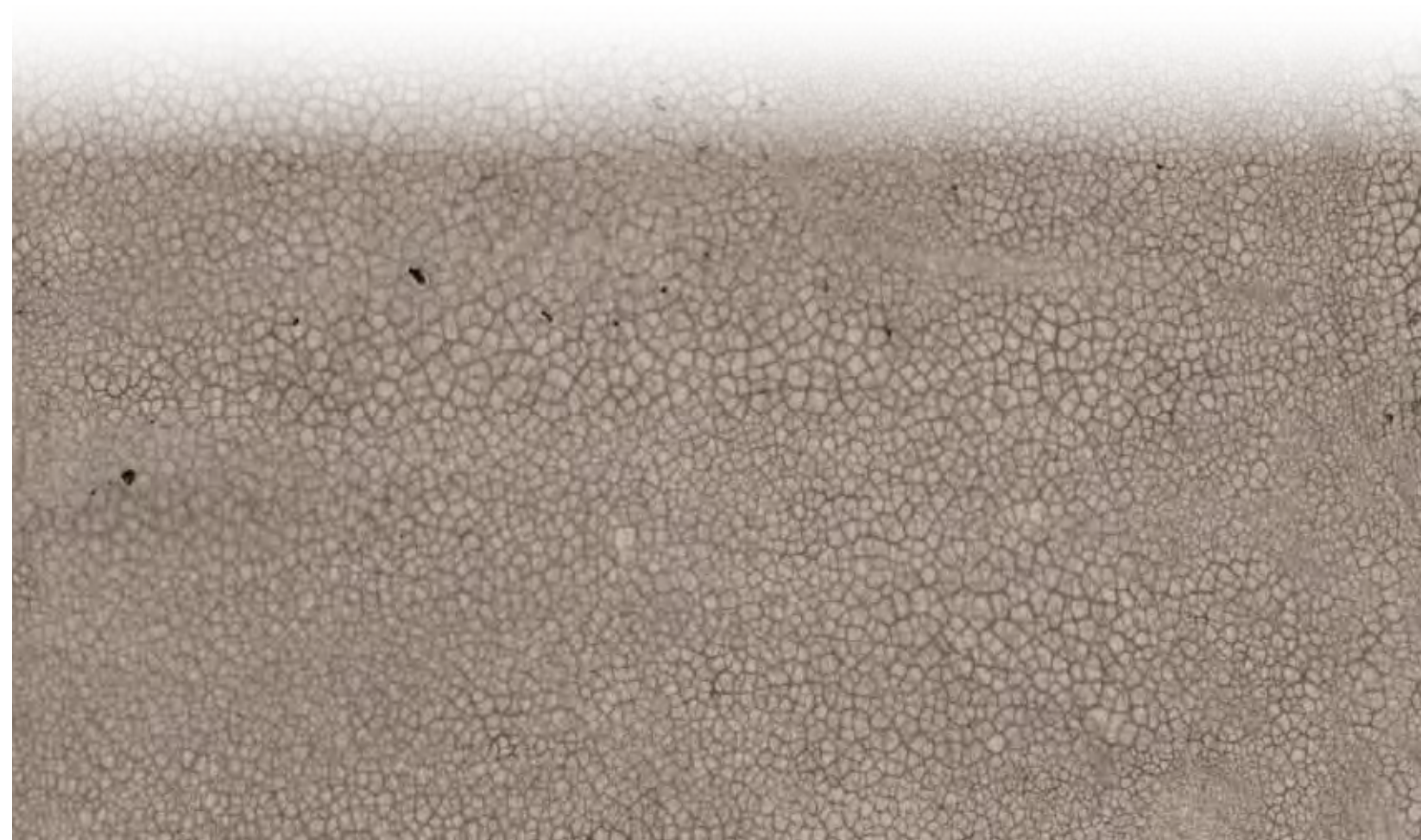
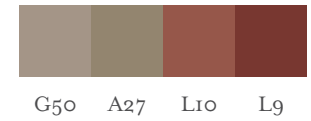


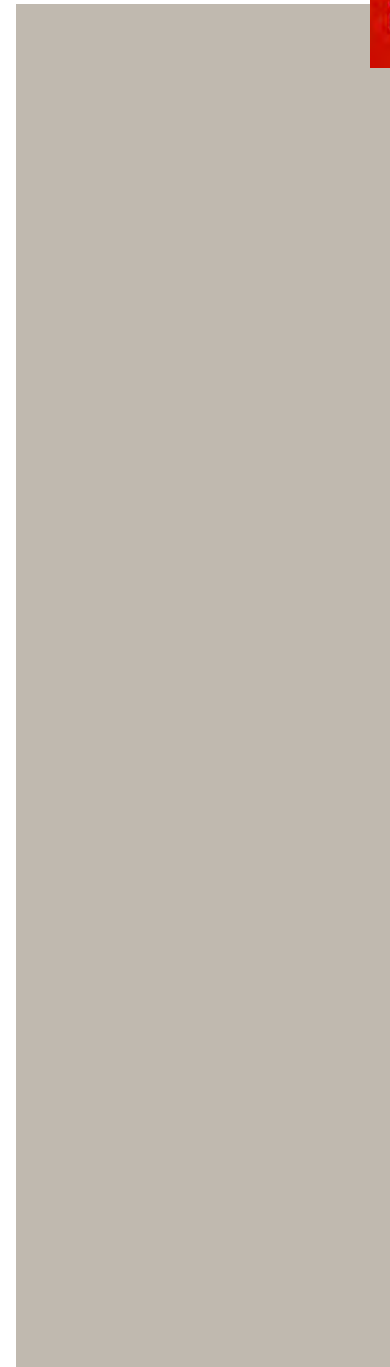
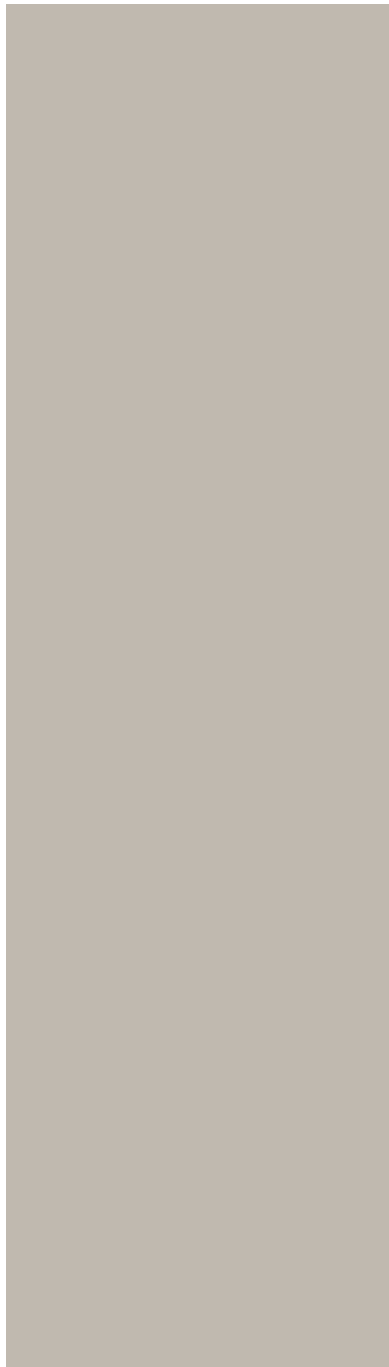
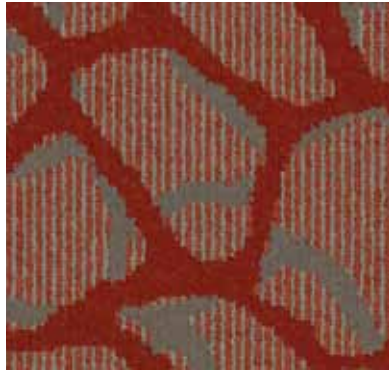


87CR1J | REPEAT: 6"W x 9"L



88EFIJ | REPEAT: 12"W x 12"L





Y5741 | REPEAT: 48"W x 48"L

A 6180

B 5802D

A 6180

B 5802D

Y5740 | REPEAT: 36"W x 48"L

TRADITIONAL HAND-DYEING RESIST TECHNIQUES INSPIRED BOLD, ORGANIC PATTERNS THAT CREATE DEPTH AND LUXURY FROM CORRIDORS AND BALLROOMS TO GUEST ROOMS.

GUEST ROOMS

VIVID PALETTE TUFTED IS AN EXPLORATION OF COLOR AND PATTERN. FROM GUEST ROOMS TO PUBLIC SPACES, IT IS THE COLOR OF NATURE THAT NURTURES FROM THE INSIDE OUT.

ELEVATOR BAYS

LOBBY

VIVID PALETTE PRINT IS FRESH, VIBRANT, AND UNABASHEDLY BOLD. WITH DESIGNS THAT TRANSITION EASILY FROM LOBBIES TO BALLROOMS TO MEETING ROOMS... AND EVERY PUBLIC SPACE IN BETWEEN.

CORRIDOR

CORRIDOR

TUFTED

There's a reason why we are the industry leader in tufted carpet for public space, guest rooms and corridors. Our tufted broadloom and carpet tile flooring offers distinctive designs with unsurpassed performance at competitive prices. The Shaw Hospitality Group inhouse design team works with you to create custom patterns, or you can select from our award-winning collections—both of which are available using more than 270 solution-dyed nylon colors.

PRINT BROADLOOM

We understand that competitive hotels require a look that reflects your brand's uniqueness. Along with the industry's most advanced printing technology and a knowledgeable custom design support team, our digital printing system reproduces complex patterns and intricate details with precise line definition and exact color saturation.

Print broadloom offers extraordinary design flexibility and customization. Select up to 10 color per pattern from our extensive library of more than 720 colors with pattern repeats of up to 100 feet long and up to 60 feet wide. Industry-leading design flexibility, combined with a proprietary roster of base textures and weights, will satisfy any specification.

COMPUTER YARN PLACEMENT (CYP)

This digital tufting process allows us to create beautifully patterned carpets that rival the look and performance of woven. CYP creates textural effects with cut and loop construction. The end result: carpet that looks woven, but with the bleach and fade resistance of solution-dyed nylon. With a variety of backing options and an extensive library more than 270 solution-dyed nylon colors, CYP offers vast product flexibility for your design needs.

ECO-FRIENDLY ECO-FIBER

eco⁺solution Q[®]**Vivid Palette is made of sustainable Eco Solution Q[®] nylon.**

- Eco Solution Q is MBDC Cradle to Cradle certified and contains 45% recycled content, consisting of 20% pre-consumer recycled content and 25% post-consumer recycled content. The recycled content is based on allocated nylon fiber from our total nylon fiber production and determined as a percent of total Eco Solution Q nylon output. Actual recycled content will likely vary.
- Recyclable through the Shaw Green Edge Recycling Program
- Contributes to LEED point rating system for recycled content, low emitting materials and innovation in design
- Green Label Plus Certified
- Print carpet is cradle-to-cradle

After its useful life, this product can be recycled again and again by calling 877.502.SHAW (7429)





 Interdeco™



www.shawhospitalitygroup.com | 888.448.7878
© 2012 Shaw Industries, a Berkshire Hathaway Company

shaw hospitality group™