



View From Above
Collection

View From Above™ Collection

A weekly commute. Flying home through the quiet night sky and welcomed by familiar city lights. View From Above was inspired by these images—clouds transformed by shadows, set against the geometry of city lights. Night Flight™ is the central character in this collection with intersecting rows highlighted by sparks of contrast, creating a pattern that is completely monolithic and non directional. Cloud Cover™ contrasts that formality with a pattern that is simply soft texture without being derivative of any other material. Head in the Clouds™ lusciously describes the depth of these layered ideas—sky, clouds and city lights forming an illuminated grid.

Night Flight and Cloud Cover share eight colorways ranging from classic neutrals and soft pastels to rich, gem-like hues. Head in the Clouds is offered in four colorways that cleverly pair with any style in the collection. The entire View From Above collection is made with 100% recycled content nylon. It's just one of the steps we take to keep our skies bright and clear. Prepare for landing.

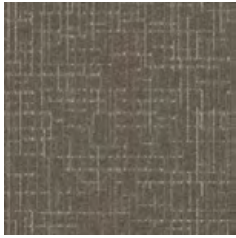






PRODUCT NIGHT FLIGHT COLOR 105699 CARDOON PRODUCT CLOUD COVER COLOR 105707 MEADOW INSTALLED BRICK

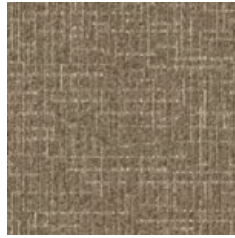
Night Flight™ Colorline



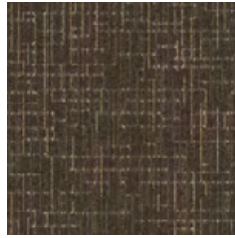
105695 MEADOW



105696 WHEAT FIELD



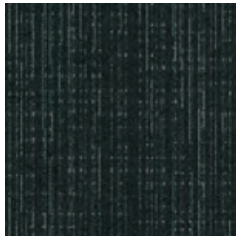
105697 SAND DUNE



105698 ROCKY SHORE



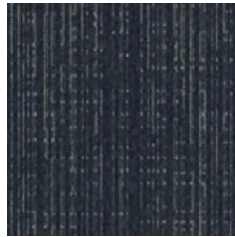
105699 CARDOON



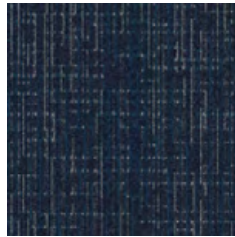
105700 FOREST



105701 LAVENDER CREST



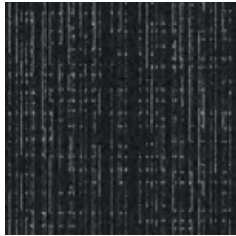
105702 PLUM SHADOW



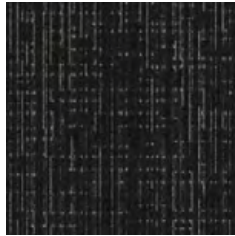
105703 DARK SKY



105704 AFTER DARK



105705 SMOKY RIDGE



105706 BLACKOUT

Specifications

Modular, 50cm x 50cm	1287202500
Backing System	GlasBac® Tile
Yarn Manufacturer	Aquafil
Yarn System	100% Recycled Content Type 6 Nylon
Color System	100% Solution Dyed
Construction	Tufted Pattern Loop
Preservative Protection	Intersept®
Soil/Stain Protection	Protek2®
Pile Thickness	0.139 in., 3.5 mm
Pile Density	6,216
Total Recycled Content	75%
Indoor Air Quality	CRI Green Label Plus #GLP0820



BRICK QUARTER-TURN





CARPET PRODUCT CLOUD COVER COLOR 105716 AFTER DARK
LVT PRODUCT LEVEL SET™ | NATURAL STONES COLOR A00103 COOL IMPALA MARBLE INSTALLED NON DIRECTIONAL

Cloud Cover™ Colorline



105707 MEADOW



105708 WHEAT FIELD



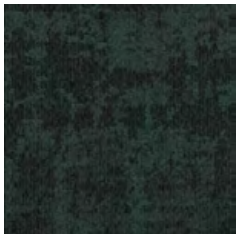
105709 SAND DUNE



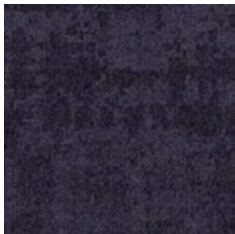
105710 ROCKY SHORE



105711 CARDOON



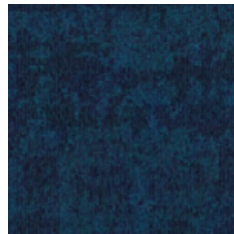
105712 FOREST



105713 LAVENDER CREST



105714 PLUM SHADOW



105715 DARK SKY



105716 AFTER DARK



105717 SMOKY RIDGE



105718 BLACKOUT

Specifications

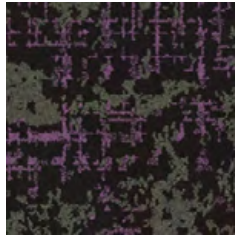
Modular, 50cm x 50cm	1378902500
Backing System	GlasBac® Tile
Yarn Manufacturer	Aquafil
Yarn System	100% Recycled Content Type 6 Nylon
Color System	100% Solution Dyed
Construction	Tufted Cut & Loop
Preservative Protection	Intersept®
Soil/Stain Protection	Protekt2®
Pile Thickness	0.079 in., 2.0 mm
Pile Density	7747
Total Recycled Content	73%
Indoor Air Quality	CRI Green Label Plus #GLP0820



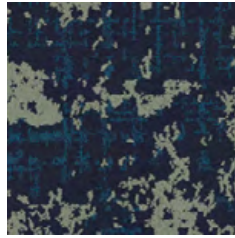
Head in the Clouds™ Colorline



105719 ROLLING DESERT



105720 TAWNY FIELDS



105721 OCEAN VIEW



105722 MIDNIGHT LANDING

Specifications

Modular, 50cm x 50cm	1287302500
Backing System	GlasBac® Tile
Yarn Manufacturer	Aquafil
Yarn System	100% Recycled Content Type 6 Nylon
Color System	100% Solution Dyed
Construction	Tufted Sheared
Preservative Protection	Intersept®
Soil/Stain Protection	Protekt2®
Pile Thickness	0.104 in., 2.6 mm
Pile Density	8,308
Total Recycled Content	75%
Indoor Air Quality	CRI Green Label Plus #GLP0820



BRICK



MONOLITHIC



NON-DIRECTIONAL



PRODUCT HEAD IN THE CLOUDS **COLOR** 105721 OCEAN VIEW **INSTALLED** MONOLITHIC
PRODUCT NIGHT FLIGHT **COLOR** 105703 DARK SKY **INSTALLED** BRICK





PRODUCT CLOUD COVER **COLOR** 105709 SAND DUNE **INSTALLED** NON DIRECTIONAL
PRODUCT NIGHT FLIGHT **COLOR** 105698 ROCKY SHORE **INSTALLED** BRICK

Why Our Modular Carpet?



Modular Carpet Tile

Performance and Flexibility. Interface's standard backing systems set the industry standard for modular performance. Tiles stay on the floor with no upcurl, no tapping and no rippling effect, yet are easy to selectively replace. Our modular carpet is also easier to handle, install and maintain than bulky roll carpet. And, it installs with less waste so you save time and money — 3-4% for typical modular carpet compared to an average waste factor of 14% for traditional roll carpet.



Cool Floor™

The Low Carbon Option. Help stop climate change. ALL Interface modular flooring sold in North America is third party verified climate neutral Cool Floor. We start by using low-carbon materials and manufacturing processes, then Cool Floor zeros out all remaining greenhouse gas (GHG) emissions associated with the entire life cycle of your flooring, from raw material extraction through use and recycling.



TacTiles®

No Glue Installation. Our revolutionary TacTiles installation system eliminates the need for glue, adhering tiles securely together to form a floor that "floats" for greater flexibility, easier replacement and long-term performance. The result? Less mess, less waste and virtually no VOCs, not to mention an environmental footprint that is over 90% lower than that of traditional glue adhesives.

Samples

Order samples at www.interface.com. You'll receive email order confirmations, 24/7 access to order status and more. Not near a computer? You can also request samples by calling one of the numbers below.

United States 1.877.605.1500	Canada 1.866.398.3192
Brazil + 55 11 2196 0900	Latin America + 52 55 6395 5100

www.interface.com

Register at www.interface.com to:

- Browse products and order samples
- View carpet in a variety of room scenes
- Browse floor designs, change colors, view as a grid or in a room, download and share
- Use our LEED Calculator
- Check order status and inventory availability
- Sign up to get the latest information on Interface products and news

InterCircle™ Sample Return

Help us close the loop on the carpet sampling process. Through our InterCircle Sample Return program, sample materials stay out of the landfill and are re-used as samples until it is time to recycle them into new carpet. By reducing sample production material and diverting old materials from the landfill, we can reduce our overall environmental footprint.

Call 1.877.605.1500 (U.S.) or 1.866.398.3192 (Canada) to order a sample return bag with a prepaid return label.

Third Party Certification

cool floor™

Cool Floor – Our third party verified carbon offset program zeroes out all greenhouse gas (GHG) emissions associated with the entire life cycle of your flooring.



Environmental Product Declaration (EPD) – A statement of product ingredients and environmental impacts over the entire life cycle of a product. A comprehensive life cycle assessment (LCA) is performed to ISO standards to develop an EPD, after which both the EPD and LCA must be third party verified.



Sustainable Assessment for Carpet – The only carpet sustainability standard in North America that evaluates the environmental impact of carpet for its entire lifecycle.



CRI Green Label Plus – An independent testing program that identifies carpet and adhesives with very low emissions of VOCs to help improve indoor air quality.



Intersept®

Mold Protection. Our proprietary preservative, Intersept, protects our modular carpet against mold growth and odor-causing bacteria — guaranteed. Intersept treated carpet, with proper maintenance, shows no mold or bacterial growth when tested per the ASTM E2471 Standard Test Method. Intersept is EPA approved for safe use in carpet, water insoluble and contains no halogens, heavy metals, phenols or formaldehyde.



ReEntry®

Recyclable is Now a Reality. Through our ReEntry program and partnerships with our fiber suppliers and recycling centers throughout North America, separated Type 6 and 6,6 nylon are recycled into new 6 and 6,6 nylon while separated GlasBac®, GlasBacRE and similar competitor backings are recycled into new GlasBacRE non-virgin PVC backing using our Cool Blue™ technology. The result? Products with up to 89% total recycled content, including as much as 27% post-consumer content.



Sustainable Choice

Environmental Responsibility. More than 95% of Interface products manufactured in the Americas carry the GreenCircle Certified Environmental Facts label, which has verified that standard Interface products are manufactured using 99% renewable energy and offer a minimum of 66% and 80% total recycled content when backed with GlasBac and GlasBacRE backing respectively.

Transparency and certified sustainability leadership come standard on all Interface products, including published ingredients in HPDs (Health Product Declarations) or Declare Labels. In addition, more than 99% of our products globally have a published EPD (Environmental Product Declaration), which evaluates consistent factors based on full life cycle assessment (LCA). And, all Interface products with GlasBacRE backing are certified to the Platinum level of the NSF/ANSI 140 Sustainable Assessment for Carpet. GlasBac backed products meet the Gold level. NSF/ANSI 140 certified products contribute toward a USGBC or CaGBC LEED credit.



All product specifications reflect averages derived from product sample testing, are subject to normal manufacturing and testing tolerances and inherent pattern variances, and may be changed without notice. For more information about these and other important attributes of the product(s) described herein, including recycled content and product warranty information, please see www.interface.com/disclaimer.

Printed on 50% post consumer waste (PCW) fiber manufactured using wind power.

We have tried our very best to accurately represent product colors. However, due to the nature of printed materials, color of actual products may vary slightly. Please request a sample to see actual product color.

www.interface.com

United States Headquarters

1503 Orchard Hill Road
LaGrange, GA 30240
1.800.336.0225 ext.56511

Canadian Headquarters

233 Lahr Drive
Belleville, ON K8N 5S2
1.800.267.2149 ext.52128

Brazilian Headquarters

Rua Surubim, 577 - Conjuntos
73/74 7º Andar
04571-050 - São Paulo - SP
+ 55 11 2196 0900

Latin American Headquarters

Montes Urales # 415 Piso 6
Col. Lomas de Chapultepec
México City, D.F. 11000
Mexico
+ 52 55 6395 5100

CIM # IFS00801 04/2018



Climate change is undeniable. And reversible. Our mission is to prove it.
Join the #ClimateTakeBack and help create a climate fit for life.