

# Native Fabric | LVT



Interface®

Fine strands of native grasses are woven together to make grass cloth and other textiles, paying proper reverence to the delicate variations of the natural fiber. This simplicity has served as an essential texture in modern interiors, adding the ideal amount of contrast to the finishes that define these spaces.

Native Fabric captures all these qualities in a perfectly minimal palette of eight soft shades with an unexpected hint of metallic threading throughout. Offered in 50cm squares, Native Fabric responds to this need for the warmth and grace of natural variation but with all the performance characteristics of an Interface LVT.

Combine Native Fabric with Interface carpet tiles side by side for an integrated flooring system of hard and soft in Skinny Planks™ and squares. Interface modular floors allow you to move from surface to surface without the need for transition strips.

And, of course, we design all our products with the ability to feed our recycling program, ReEntry®, and mindful of our commitment to continually minimize our environmental footprint.





PRODUCT NATIVE FABRIC COLOR A00804 STRAW INSTALLED NON DIRECTIONAL









**PRODUCT** NATIVE FABRIC **COLORS** A00802 SEAGRASS, A00807 BLUEGRASS  
**INSTALLED PATTERN BY TILE**

# Specifications



Product Number	A008
Product Construction	High Performance Luxury Vinyl Tile
Class / ASTM F1700	Class III Printed Vinyl Tile
Wear Layer Thickness	22 mil
Total Thickness	4.5 mm
Backing Class	Commercial Grade
Finish	Ceramor™ Coating
Nominal Dimensions	50cm x 50cm (19.69 in x 19.69 in)

### Performance

IIC Sound Rating	(ASTM E492-09) 57 IIC
Slip Resistance	(ASTM D2047) >0.55 wet/dry, ADA Compliant
Static Load Limit	(ASTM F970) 1500 psi
Flexibility	(ASTM F137) Passes
Resistance to Heat	(ASTM F1514) Passes
Resistance to Light	(ASTM F1515) Passes
Radiant Flux	(ASTM E648) Class I
Smoke Density	(ASTM E662) Passes, ≤450
Size & Squareness	(ASTM F2055) Passes, +/- 0.016 in. per linear foot
Thickness	(ASTM F386) Passes
Dimensional Stability	(ASTM F2199) Passes
Residual Indentation	(ASTM F1914) Passes
Resistance to Chemicals	(ASTM F925) Passes

### Environmental

Indoor Air Quality	FloorScore®/CDPH 01350 Certified for Low-VOC Emissions
Material Composition	Free of Ortho Phthalates, Added Formaldehyde and Heavy Metal Stabilizers
Ingredients & Life Cycle Impacts	Environmental Product Declaration
Carbon Footprint	3rd Party Verified Carbon Neutral
Sustainability Assessment	NSF/ANSI 332, Meets Certification Guidelines
LEED v4	Contributes to IEQ: <i>Low Emitting Materials</i> ; M&R: <i>EPD and EPR</i>
End of Life	Fully Recyclable LVT to Carpet Tile Backing

### Packaging

Square Feet per Carton	26.91 sq. ft. (2.5 m <sup>2</sup> )
Pieces per Carton	10
Weight per Carton	40 lbs (18 kg)
Cartons per Pallet	40
Pallets per Truckload	20

### Technical Information

Installation	See Interface LVT Installation Guidelines online
Maintenance	See Interface LVT Maintenance Guidelines online
Reclamation	Recyclable through ReEntry® - Call 1.888.733.6873 (U.S.) / 1.866.398.3191 (Canada)
Warranty	15 Year Limited Commercial Warranty
Installation Methods	Ashlar, Brick, Monolithic, Non Directional & Quarter-Turn



All product specifications reflect averages derived from product sample testing, are subject to normal manufacturing and testing tolerances and inherent pattern variances, and may be changed without notice. For more information about these and other important attributes of the product(s) described herein, including recycled content and product warranty information, please see our full LVT product disclaimer @ interface.com.





A00801 FLAX



A00802 SEAGRASS



A00803 TATAMI



A00804 STRAW



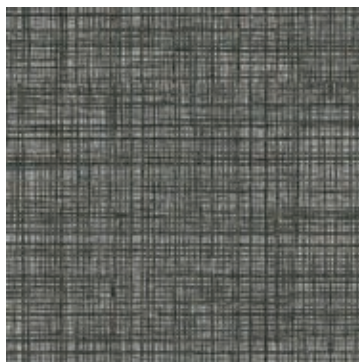
A00805 LINEN




A00806 TWINE



A00807 BLUEGRASS



A00808 MULBERRY



Interface Modular Resilient LVT  
and Modular Carpet allow you to  
seamlessly move from hard to soft  
surfaces. No transition strip needed.





## Integrated System.

*Say goodbye to transition strips and doubling up.* Our modular resilient floorings are made to work as a system with our modular carpet. The compatible size and height of our products allows you to integrate modular carpet for an inset rug or an adjacent field – no transition strip required. You'll avoid doubling up on materials and save money.

## Real Flexibility.

*Create a unique look that lasts.* Interface modular resilient LVT makes it easy to extend the life of your floor. From simple maintenance like damp mopping to selectively replacing damaged tiles, your flooring investment will stand the test of time - beautifully and effortlessly.

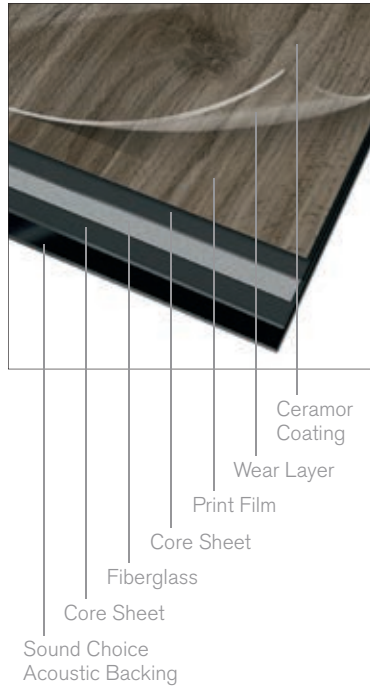
## Circular System.

*Keep flooring out of the landfill.* Our modular resilient LVT is produced with a controlled material stream so it can be reclaimed and recycled into our GlasBac®RE recycled content backing through our ReEntry program.

## Noise Reduction.

*Silence distractions.* Interface is helping create +Positive spaces™ with our LVT with Sound Choice backing. Sound Choice is a specially formulated backing developed for superior noise reduction, offering you best-in-class performance for reduced impact sound and floor to floor sound transmission.

## Why Our Modular Resilient LVT? (continued)



### High Performance from Top to Bottom.

From our Ceramor™ coating to our Sound Choice backing, we've designed our modular resilient LVT to provide peak performance in even the most challenging work environment while also providing superior noise reduction.

*Abrasion Resistance.* Our Ceramor ceramic bead coating provides a durable finish that resists scratching and scuffing so your floors look better longer. Embossing adds texture to further enhance durability.

*A Strong Core.* Incorporating a fiberglass layer between two core sheets provides optimal dimensional stability and flexibility, allowing for a fully modular installation with the ability to move and update with ease.

### Third Party Certification.

*Low Carbon Option.* ALL Interface LVT sold in North America is third party verified carbon neutral under our long-standing Cool Floor™ program. Cool Floor offsets all greenhouse gas (GHG) emissions associated with the entire life cycle of the product.

*Environmental Product Declaration (EPD).* Interface LVT products are covered by an EPD. An EPD provides a comprehensive statement of product ingredients and environmental impacts based upon life cycle assessment performed to ISO standards.

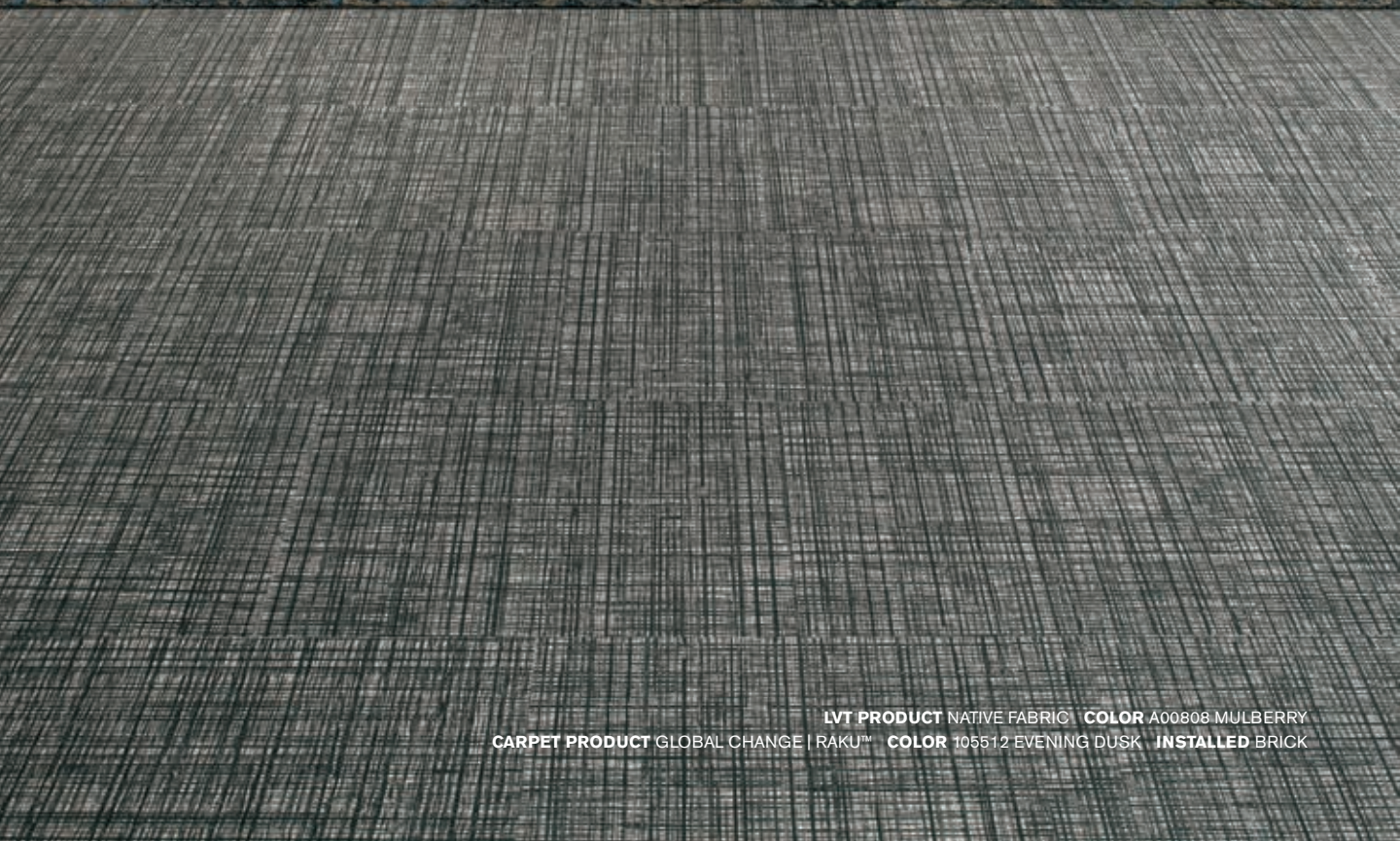
*Sustainable Assessment.* Interface LVT meets the Silver level of the NSF/ANSI 332 Sustainability Assessment for Resilient Floor Coverings. This standard evaluates the environmental impact of resilient floorcovering for its entire lifecycle.

*Indoor Air Quality.* All Interface modular flooring products meet the highest standards for indoor air quality. Interface LVT is FloorScore® Certified, assuring very low emissions of VOCs.

cool floor™









PLEASE RECYCLE

Printed on 50% post consumer waste (PCW) fiber manufactured using wind power.

We have tried our very best to accurately represent product colors. However, due to the nature of printed materials, color of actual products may vary slightly. Please request a sample to see actual product color.



[www.interface.com](http://www.interface.com)

#### **United States Headquarters**

1503 Orchard Hill Road  
LaGrange, GA 30240  
1.800.336.0225 ext.56511

#### **Canadian Headquarters**

233 Lahr Drive  
Belleville, ON K8N 5S2  
1.800.267.2149 ext.52128

#### **Brazilian Headquarters**

Rua Surubim, 577 - Conjuntos  
73/74 7º Andar  
04571-050 - São Paulo - SP  
+ 55 11 2196 0900

#### **Latin American Headquarters**

Montes Urales # 415 Piso 6  
Col. Lomas de Chapultepec  
México City, D.F. 11000  
Mexico  
+ 52 55 6395 5100

CIM # IFS00802 03/2018



Climate change is undeniable. And reversible. Our mission is to prove it.  
**Join the #ClimateTakeBack and help create a climate fit for life.**