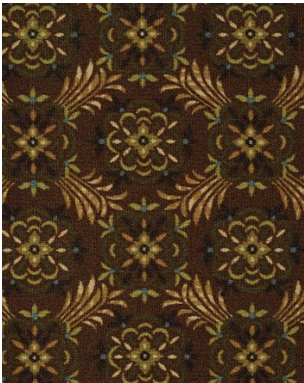




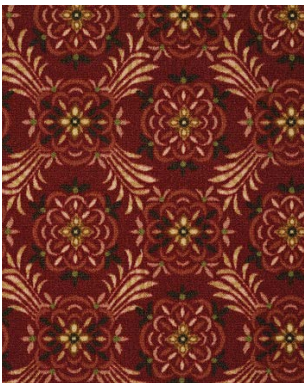
31310 Spalding



31500 National



31710 Arcadia



31800 Hera



31400 Kingdom

Interdeco™

Style Name	NATURES CRAFT	
Collection Name	Natural Element	
Style Number	54531	
Product Type	Broadloom	
Construction	Loop Pile Print	
Fiber	Eco Solution Q® Nylon Print	
Dye Method	Printed	
Primary Backing	Synthetic	
Secondary Backing	Classicbac	
Traffic Rating	Severe	
Protective Treatments	R2X	
	U.S.	Metric
Product Size	12 ft	3.66 m
Gauge	1/10 in	39.37 per 10 cm
Stitches	11 per in	45 per 10 cm
Finished Pile Thickness	0.156 in	3.96 mm
Average Density	6462 oz/yd <sup>3</sup>	
Total Thickness	0.311 in	7.9 mm
Tufted Weight	28 oz/yd <sup>2</sup>	949.4 g/m <sup>2</sup>
Pattern Repeat	1.5 ft W X 1.5 ft L	45.72 cm W X 45.72 cm L



## Recommended Installation Methods

Direct Glue

## Performance Testing

Pill Test	<b>Pass</b>
Radiant Panel	<b>Class I</b>
NBS Smoke	<b>Less than 450</b>
Electrostatic Propensity	<b>Less than 3.5 kv</b>
CRI Greenlabel Plus	<b>GLP8878</b>
ADA Compliance	<b>&gt;0.6, meets the recommended static coefficient of friction for ADA walking surfaces and accessible routes</b>

Test Reports may be included or listed by the manufacturing/inventory style number as opposed to the noted selling style number.

## Warranties

**Eco Solution Q Nylon (print base) Classicbac Twenty Year Commercial Limited Warranty**

## Environmental

Recycled Content **Pre-consumer - <1%, Post-consumer - 0%**

Specifications are subject to nominal manufacturing variance. Material supply and/or manufacturing processes may necessitate changes without notice.