

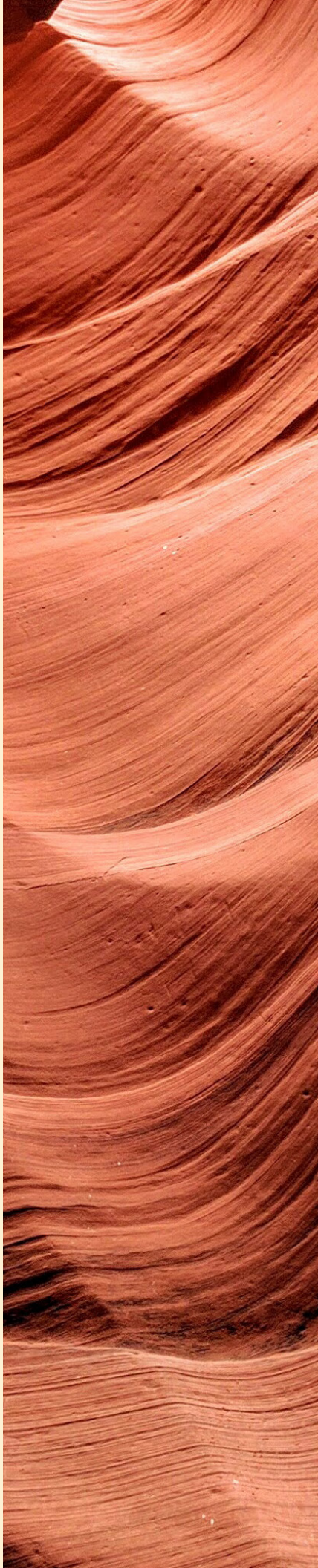
Desert Lights



Desert Lights: It's the golden hour and a hiker lifts her camera to catch the color and texture of a landscape at rest. But her mind's eye captures it best and the image becomes her go-to spot during meditation.







Previous: Canvas Rug | VR60849
Opposite: Tailor Tuft Field | HF60571

Rays of light travel 92 million miles to paint the desert from dawn to dusk. With each passing hour an otherworldly palette shows itself in a scene rich with the flora and fauna that call this place home. And for the artists who gather here, every shifting hour offers up inspiration.





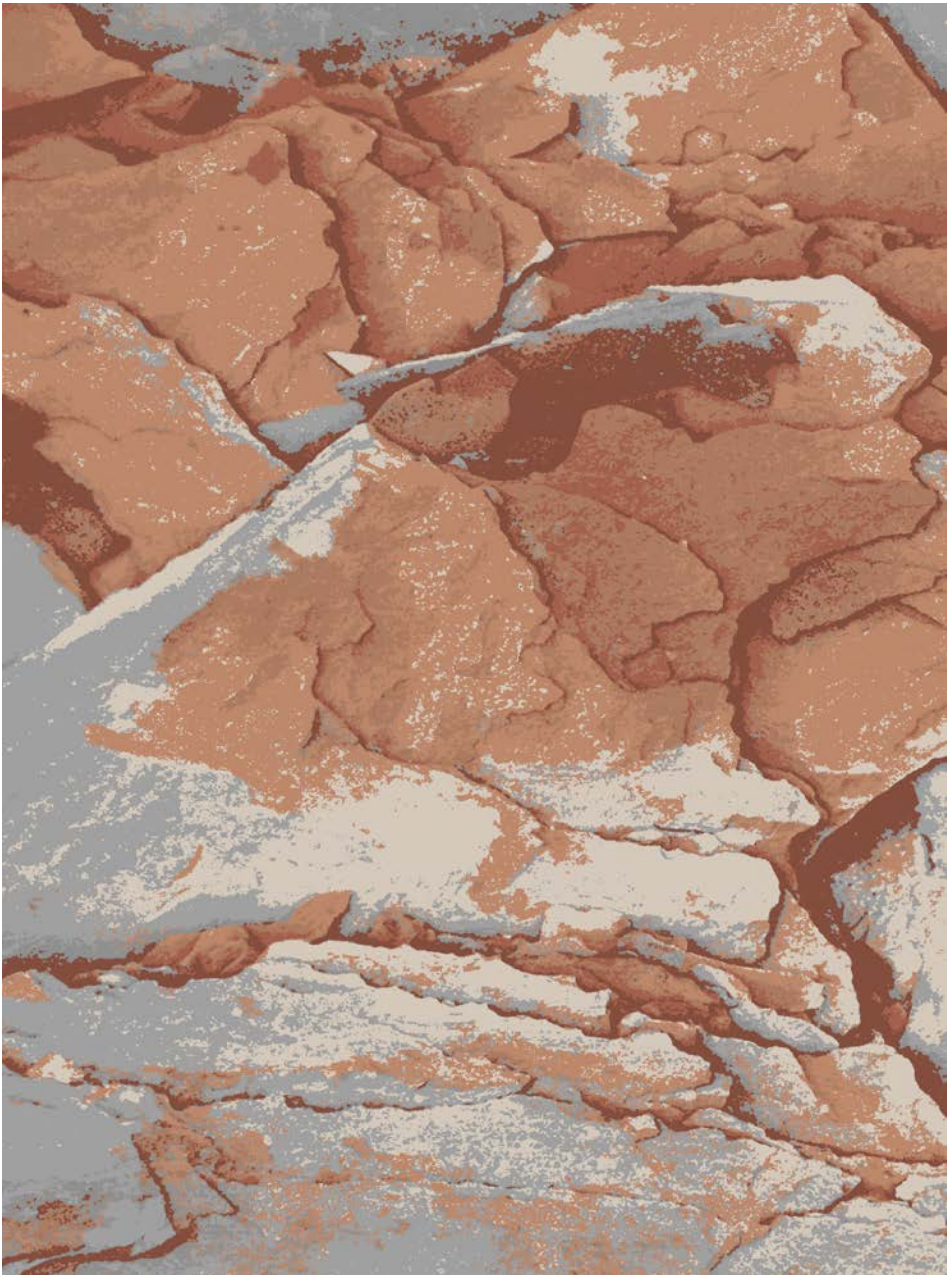
Previous: Tailor Tuft Field | HF60571
Opposite: Canvas Corridor | VN60854

With twenty-one custom patterns of sculpted texture and high definition that no other manufacturer can offer, Desert Lights presents a breathtaking view carved from nature.



Shifting Landscapes

The richness of a muse can only be captured by a palette equally rich. Find the reflections and texture of ancient sands here, brought to life with cut and loop technology that offers precision details and sculpted texture. It's Tailor Tuft for unprecedented control to create spaces that, ultimately, allow people to let go.



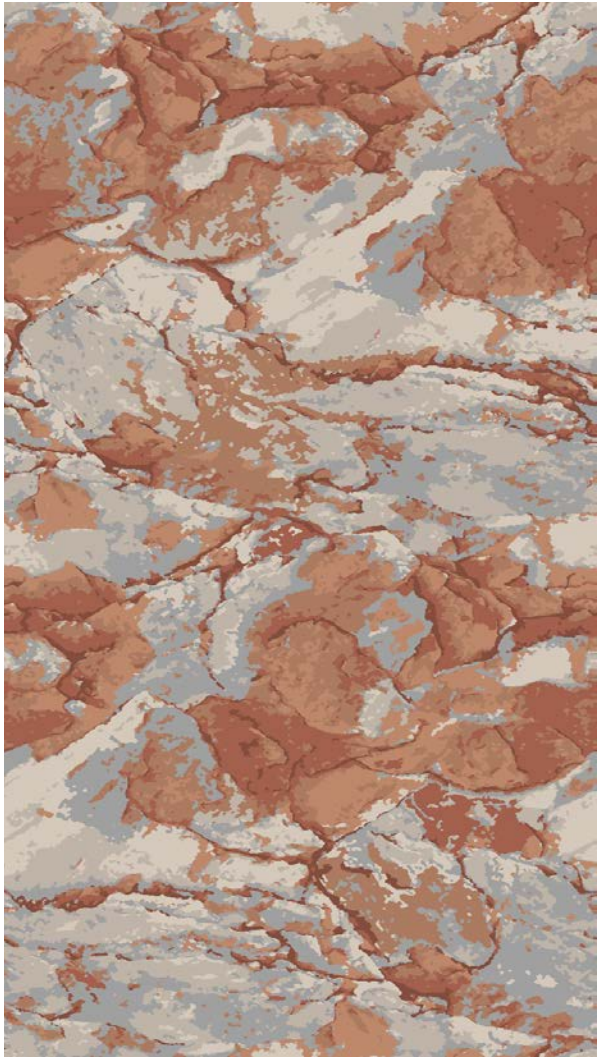
HR60563
Rug | Size: 12' W x 16'2.9" L | 3.66m x 4.95m

- A
6046
Loop
- B
6073
Cut/Loop
- C
6031
Cut/Loop
- D
5436D
Cut/Loop



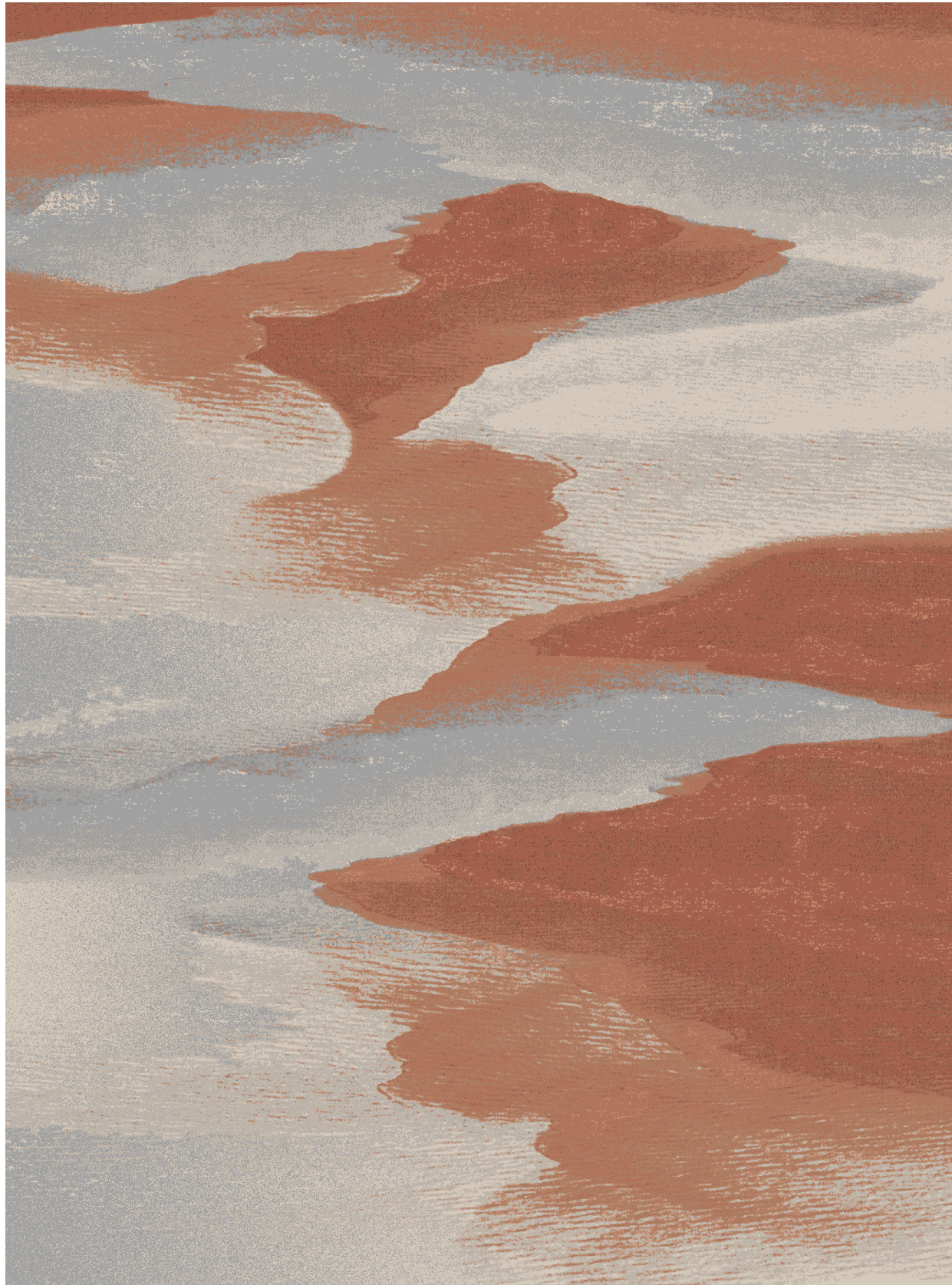
HF60571
Field | Repeat: 6' W x 6'3.6" L | 1.83m x 1.92m

- A
6046
Cut/Loop
- B
6073
Cut/Loop
- C
6031
Cut/Loop
- D
5436D
Cut/Loop



HN60562
Corridor | Repeat: 6' W x 10'8" L | 1.83m x 3.25m

- A
6046
Cut/Loop
- B
6073
Loop
- C
6031
Cut/Loop
- D
5436D
Cut/Loop



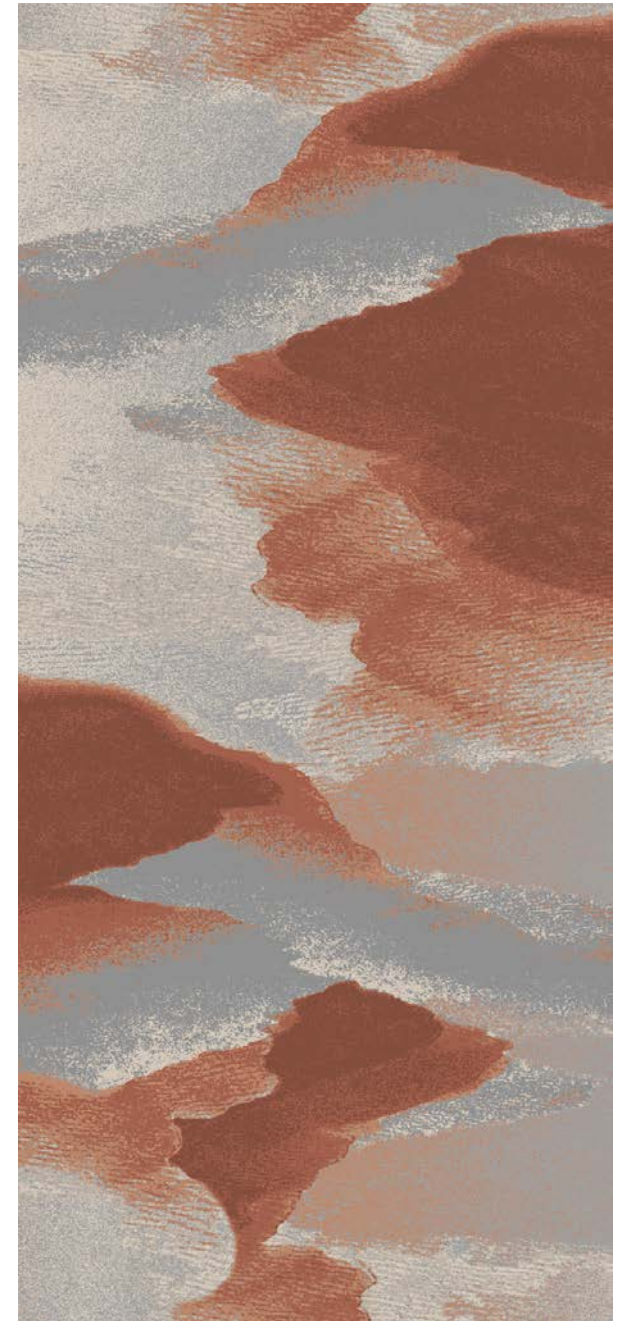
HR60561
Rug | Size: 12' W x 16'2.9" L | 3.66m x 4.95m

- A
6046
Cut/Loop
- B
6073
Cut/Loop
- C
6031
Cut/Loop
- D
5436D
Cut/Loop



HF60559
Field | Repeat: 3' W x 2'2.2" L | 0.91m x 0.66m

- A
6046
Loop
- B
6073
Loop
- D
5436D
Loop



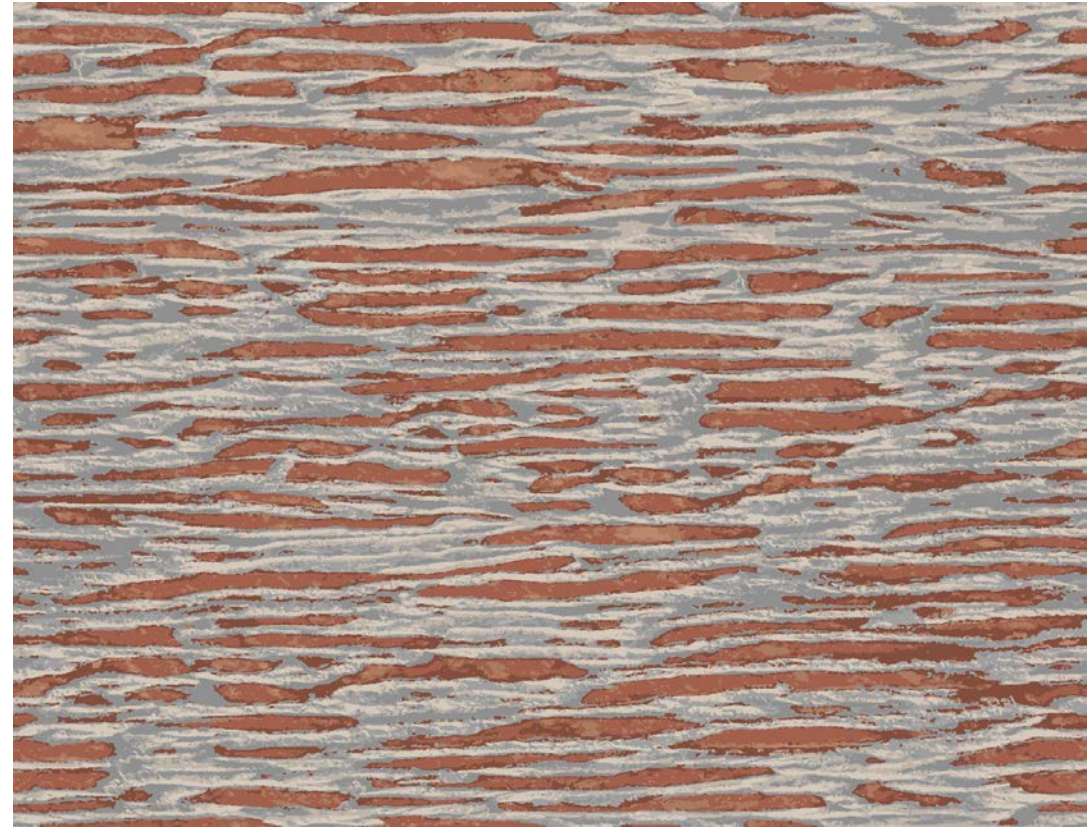
HN60564
Corridor | Repeat: 6' W x 13'4" L | 1.83m x 4.6m

- A
6046
Cut/Loop
- B
6073
Cut/Loop
- C
6031
Cut/Loop
- D
5436D
Cut/Loop



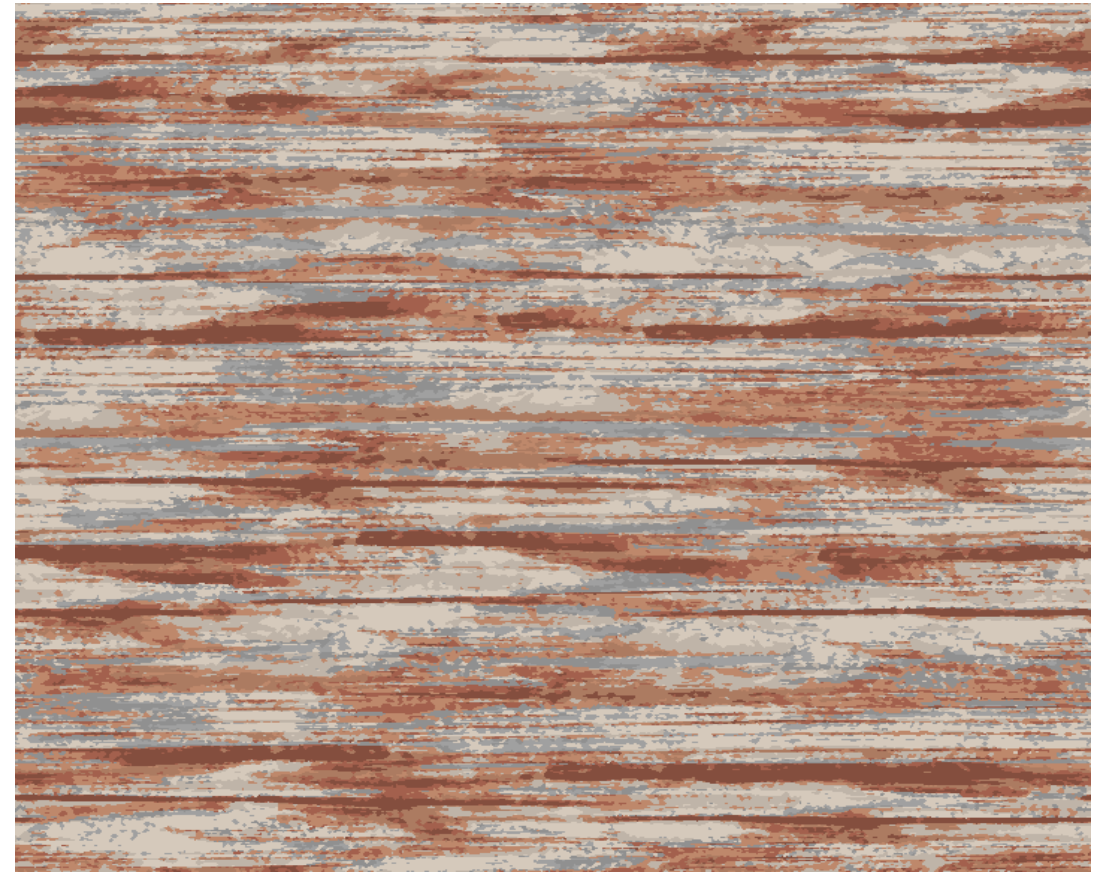
HF60552
Field | Repeat: 12' W x 13'1.1" L | 3.66m x 3.99m

- A
6046
Cut/Loop
- B
6073
Cut/Loop
- C
6031
Cut/Loop
- D
5436D
Cut/Loop



HF60557
Field | Repeat: 12' W x 9'2.9" L | 3.66m x 2.81m

- A
6046
Cut/Loop
- B
6073
Cut/Loop
- C
6031
Cut/Loop
- D
5436D
Cut/Loop



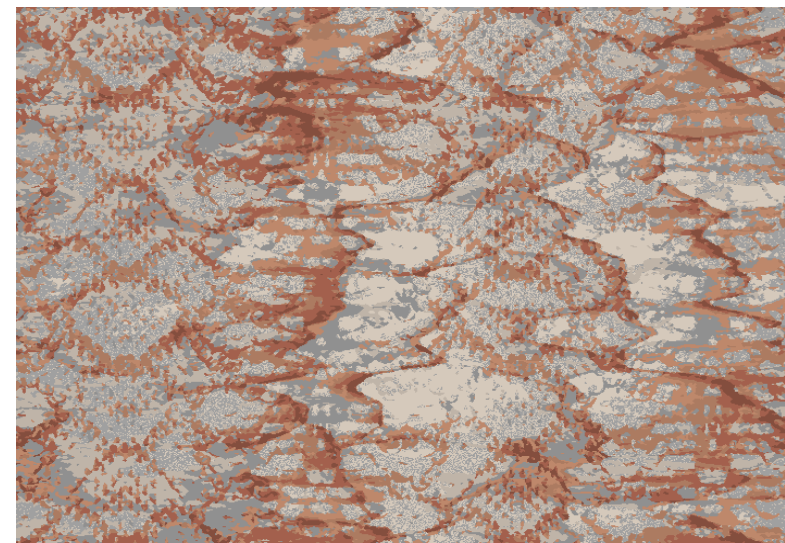
HF60572
Field | Repeat: 6' W x 4'10.2" L | 1.83m x 1.48m

- A
6046
Cut/Loop
- B
6073
Cut/Loop
- C
6031
Cut/Loop
- D
5436D
Cut/Loop



HN60570
Corridor I Repeat: 6' W x 4'1.5" L | 1.83m x 1.26m

- A
6046
Cut/Loop
- B
6073
Cut/Loop
- C
6031
Cut/Loop
- D
5436D
Cut/Loop



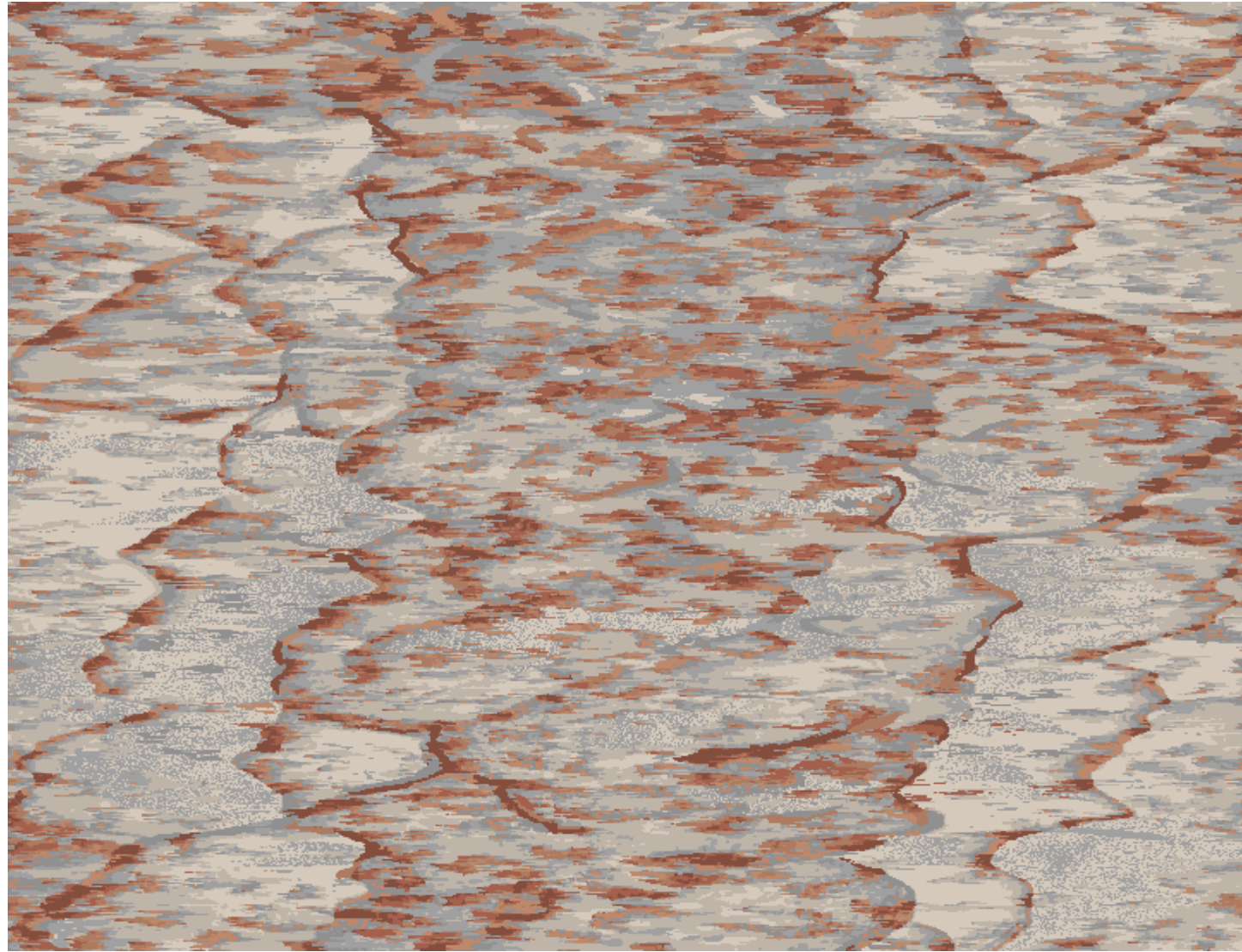
HR60569
Rug I Size: 12' W x 16'2.9" L | 3.66m x 4.95m

- A
6046
Cut/Loop
- B
6073
Cut/Loop
- C
6031
Cut/Loop
- D
5436D
Cut/Loop



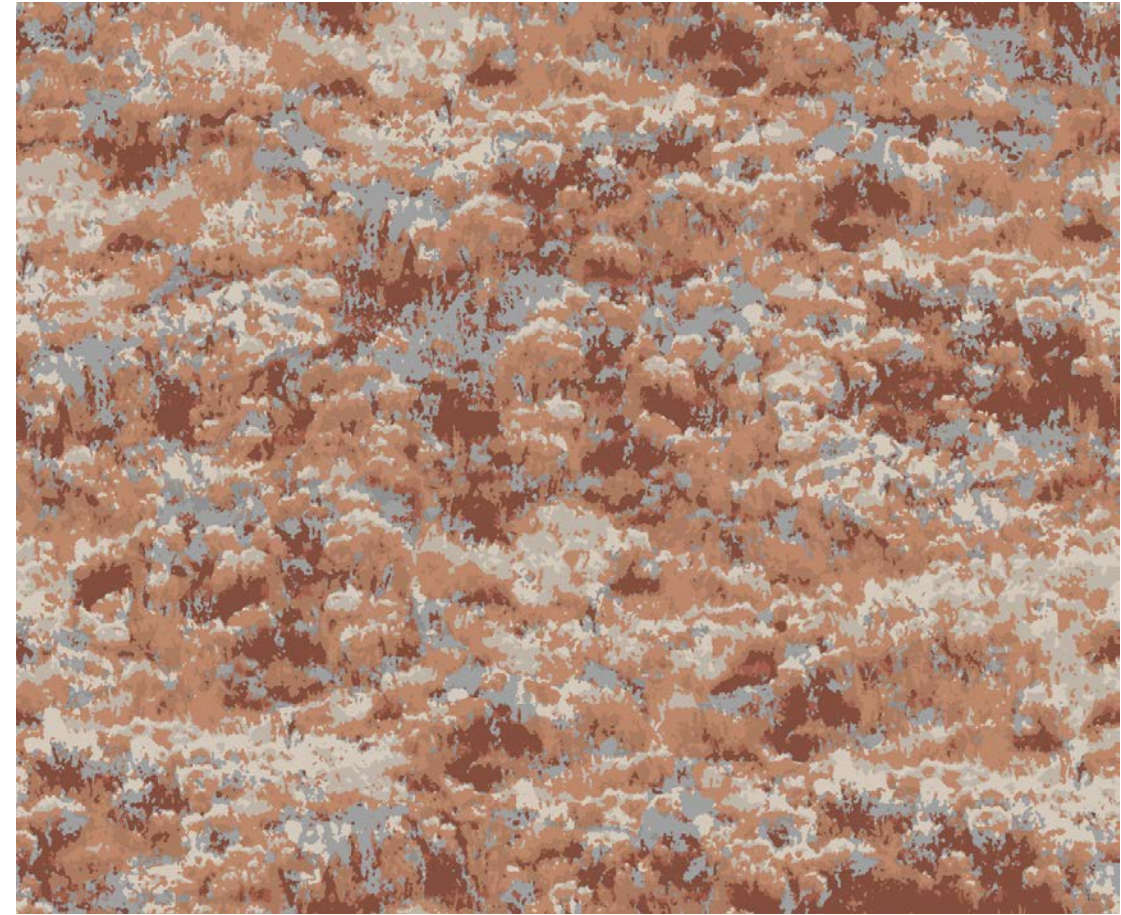
HN60568
Corridor I Repeat: 6' W x 14'9.4" L | 1.83m x 4.51m

- A
6046
Loop
- B
6073
Cut/Loop
- C
6031
Cut/Loop
- D
5436D
Cut/Loop



HN60555
Corridor I Repeat: 6' W x 4'7.3" L | 1.83m x 1.4m

- A
6046
Cut/Loop
- B
6073
Cut/Loop
- C
6031
Cut/Loop
- D
5436D
Cut/Loop



HF60558
Field I Repeat: 12' W x 8'5.8" L | 3.66m x 2.59m

- A
6046
Cut/Loop
- B
6073
Cut/Loop
- C
6031
Cut/Loop
- D
5436D
Cut/Loop



HF60553
Field I Repeat: 12' W x 8'5.8" L | 3.66m x 2.59m

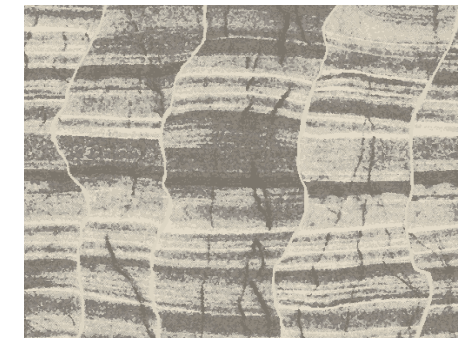
- A
6046
Cut/Loop
- B
6073
Cut/Loop
- C
6031
Cut/Loop
- D
5436D
Cut/Loop

Colors of the Desert

The colorway for the Tailor Tuft portion of the collection consists of two red tones, one gray and one light neutral. It has a dramatic look and echoes the main concept of the American southwest red desert. Further explore the Desert Lights collection with these curated color palettes in Shaw Contract's Foundry

Custom Design Tool. Tailored for designers, Foundry offers a powerful, virtual workspace where users can recolor products in rendered environments and order physical samples of their created patterns, streamlining the design-to-implementation process.

Experiment with Foundry at: foundry.shawhospitality.com



NATURAL



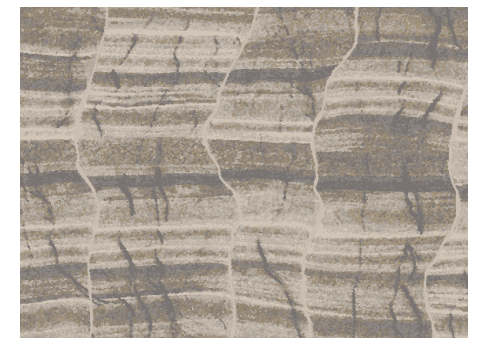
CL842 5501D 5384D CJ331



SUNRISE



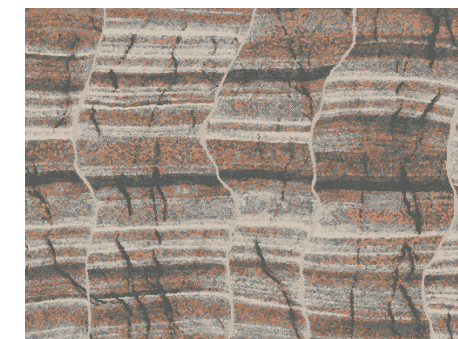
6046 5790D 6209 5500D



EARTH



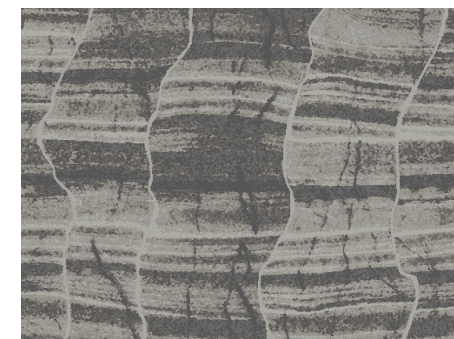
6046 5790D 5650D 5500D



PAINTED DESERT



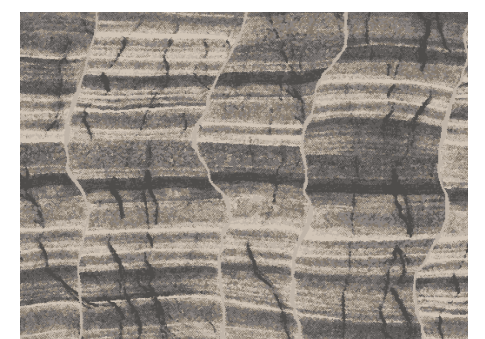
6046 6073 6031 5510D



SNAKE SKIN



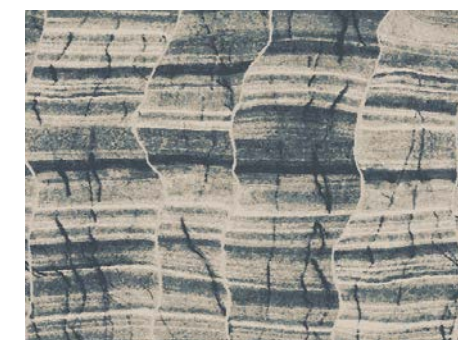
CB216 5384D 5598D CK785



STONE



6046 5944D 5500D 5850D



DUSK



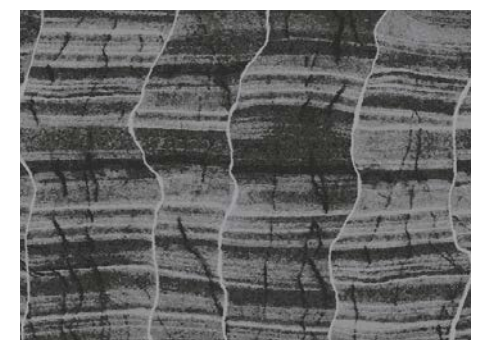
CL871 5795D 6022 CM904



MIDNIGHT



5790D 5365D CB207 5728D



SCARAB



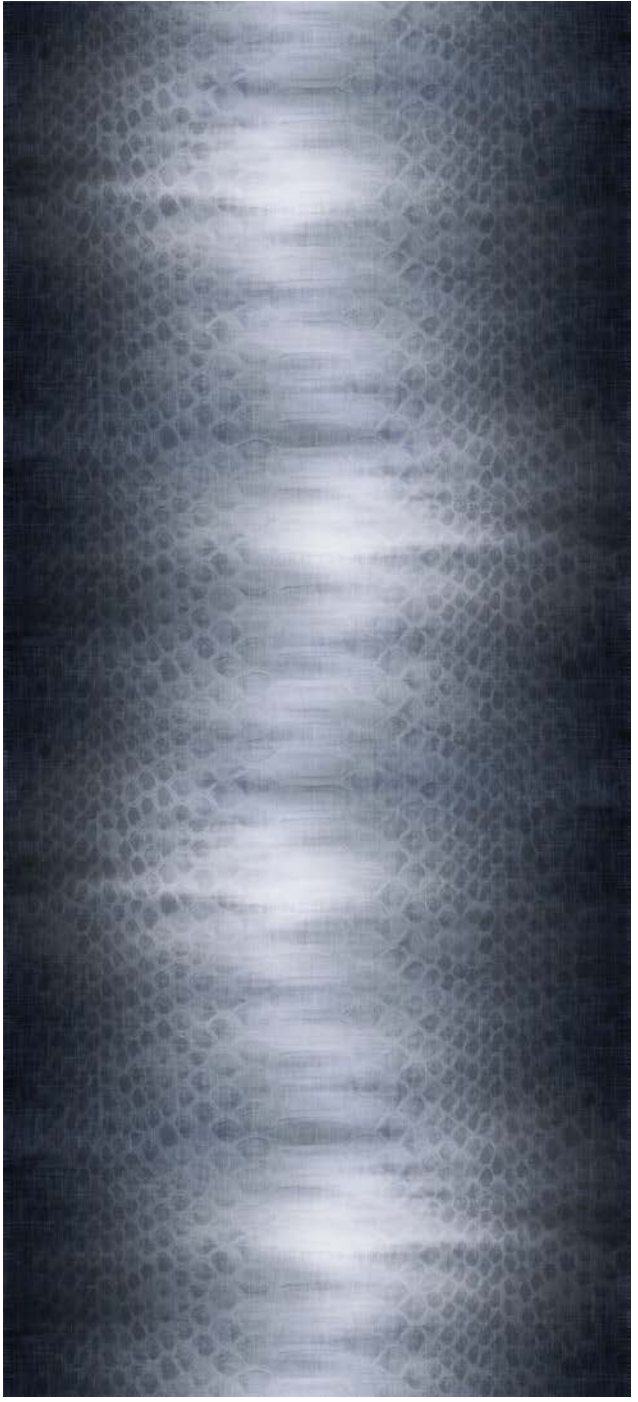
5365D CM500 5656D 5223D

A Desert Canvas

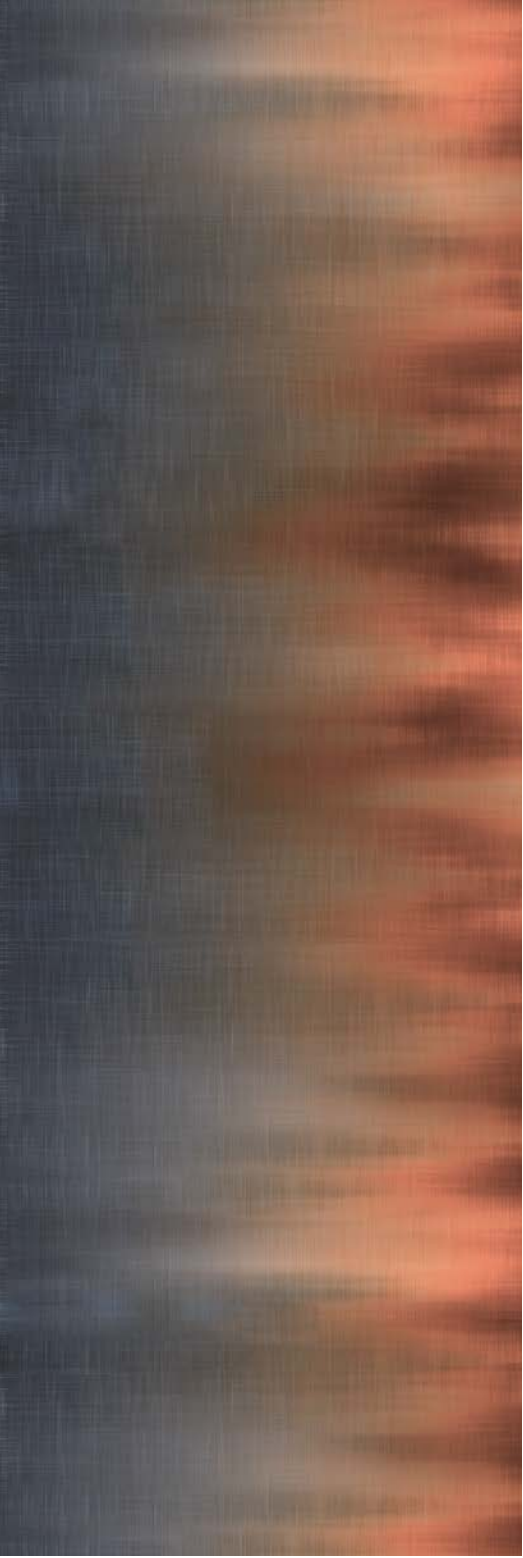
Shout in a canyon of color and it will echo back to you in muted gradations picked up in the reds, grays, and earthen tones of its walls. Placed at the feet of people moving in spaces designed for restfulness, and, they too, will hear the calm. With the latest Canvas patterns, the desert can be found everywhere.



VR60848
Rug | Size: 12' W x 18' L | 3.66m x 5.49m



VN60855
Corridor | Repeat: 6' W x 13'4" L | 1.83m x 4.06m



VN60854
Corridor | Repeat: 6' W x 18' L | 1.83m x 5.49m



VR60849
Rug | Size: 12' W x 18' L | 3.66m x 5.49m



VF60583
Field | Repeat: 3' W x 3'6" L | 0.91m x 1.07m



VN60857
Corridor | Repeat: 6' W x 16'8" L | 1.83m x 5.08m

A walk through the desert,
with its blanket of shifting lights,
ends with a shift in perspective.



CANVAS VN60854, VR60848, VF60853



The only collection with sculptured Tailor Tuft and Canvas dye-injection technology that summons the peace of the landscape millions of years in the making.





Previous : Tailor Tuft Field | HF60552

A desert diamondback slinks across a land that rises and falls with earthen stripes. Scratchy fauna contradict themselves with soft blooms, and vast tracks of dirt hang on to the sun and its warmth. Find it all underfoot with the very latest collection from Shaw Contract + Rockwell Group.



rockwellgroup + ShawContract®
hospitality