



VITALITY

Vitality homogeneous sheet features a subtle non-directional visual with softly blended tones. The homogeneous construction is the perfect foundation for high-demand environments.

Available in 24 engaging colors from neutrals to brights, it provides a wide range of palette options.







Color Creates Composition

Use Vitality's colors together to create dynamic installations and bright features that highlight the function of any space.

Analogous Color

Create simple, coordinated palettes with ease.



zest 73201



energy 73675



robust 73855

Color Gradients

Vitality features shifts in neutrals that build depth into the colorline, allowing you to separate space with subtlety.



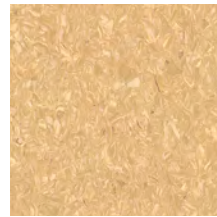
delight 73110



heal 73144



radiate 73112



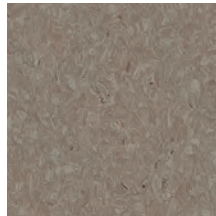
warmth 73155



uplift 73120



comfort 73755



thrive 73700



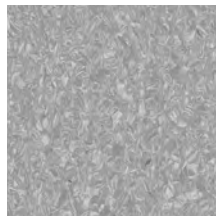
abundance 73740



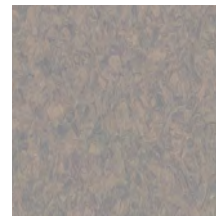
rejuvenate 73100



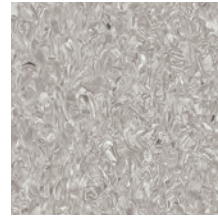
excite 73515



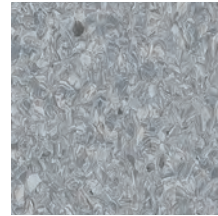
restore 73518



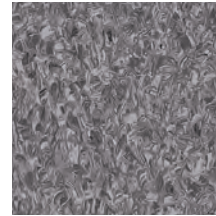
balance 73761



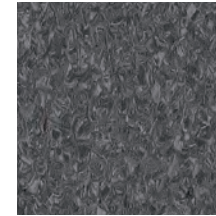
inspire 73104



invigorate 73535



strength 73530



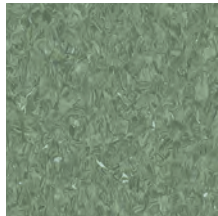
elevate 73505

Biophilic

Reference evidence-based design by using biophilic colors for their calming, restorative properties.



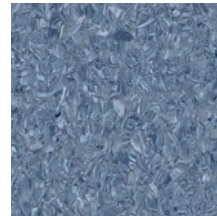
flourish 73325



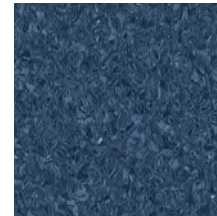
nourish 73370



soothe 73447



benefit 73415



exhilarate 73485



Product Specification

Construction	ASTM F1913 - 2.0 mm Commercial Homogeneous Sheet Non Ortho-Phthalate Construction
Static Load Limit	ASTM F970 - modified PSI 2000, measures the indentation and recovery of heavy static loads
Light Fastness	ASTM F1515 - passes, ensures the product will not discolor when exposed to light over time
Slip Resistance	ASTM D2047 – Wet, passes Dry, passes
Available Sizes	Width - 78.94 inches 2 meters Length - 65.94 feet 20.1 meters
Styles & Colors Available	Vitality Homogeneous Sheet 0873V 24 Colors



Installation

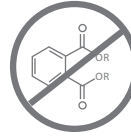
Warranty	10 Year Commercial Warranty 10 Year Underbed Warranty when installed with Shaw 4100 or S150 Adhesives	
Packing	US units	metric units
	area by roll	47.84 yd ² 40 m ²
	area by pallet	574.08 yd ² 480 m ²
	weight by roll	284 lbs 129 kg
	weight by pallet	3501 lbs 1588 kg
Weld Rod	Color coordinating weld rods for seam integrity in heavy traffic environments	
Installation Method	Reverse install, Abstracted visual allows for clean flash coving	
Recommended Adhesive	4100 and S150	



Social Responsibility



Materials & Resources
IEQ - Floorscore® IAQ Certification



Ortho-Phthalate Free
Manufactured to be free of ortho-phthalates



Certified for low VOCs



Solar Energy
With the largest rooftop-mounted photovoltaic solar array in the southeastern U.S., Shaw generates 1 megawatt of power per year-- the equivalent to removing 198 passenger vehicles from the road.



Water Use
For every 1 pound of finished product, Shaw has reduced the amount of water required to produce it by 36%.



Carbon Disclosure Project
As global citizens, Shaw encourages transparent discussion surrounding our carbon footprint. Each year, we submit our third-party verified carbon emissions to the CDP.



Infection Control

In aseptic environments, we know cleanliness is top of mind. Vitality Homogeneous Sheet is ideal for these demanding environments from its construction to its installation methods.



Vinyl Construction
Vinyl inherently does not support the growth of microbes, mold, bacteria or mildew.



Heat Weld
Color coordinating weld rods are available in all colors of Vitality. These installations create superior seam integrity that prevents liquids from permeating to the floor below.



Flash coves
The abstract non-directional visual in Vitality allows for clean flash coving up the wall in acute care environments. Flash coves create easy to clean edges and corners for the environments where clean matters.