

Common Theme Planks

www.interface.com

United States Headquarters

1503 Orchard Hill Road
LaGrange, GA 30240
1.800.336.0225 ext.6511

Canadian Headquarters

233 Lahr Drive
Belleville, ON K8N 5S2
1.800.267.2149 ext.2128

Brazilian Headquarters

Rua Surubim, 577 - Conjuntos
73/74 7º Andar
04571-050 - São Paulo - SP
+ 55 11 2196 0900

Latin American Headquarters

Montes Urales # 415 Piso 6
Col. Lomas de Chapultepec
México City, D.F. 11000
Mexico
+ 52 55 6395 5100

IFS00665 09/2014



Mission Zero®

our promise to eliminate any
negative impact our company
may have on the environment
by the year 2020.

Interface®

Interdeco™

Common Theme™ Planks

A common theme can connect seemingly disparate ideas. It can be as uncomplicated as a single thread that ties one thing to another. While the three styles in Common Theme Planks share a unique format and a well-chosen neutral palette, each pursues a very different approach to movement and pattern.

The first four styles in the Common Theme Collection hovered around simplicity and subtlety as subtext to your architecture and design. Now, Common Theme Planks brings a vibrant geometry in CT113™, a diffused design with CT112™ and a latticework collage in CT111™. Scale and pattern can be your point of departure or find the point where planks and squares converge through color, contrast and complimentary styling—inventing a whole new character to the Common Theme narrative.







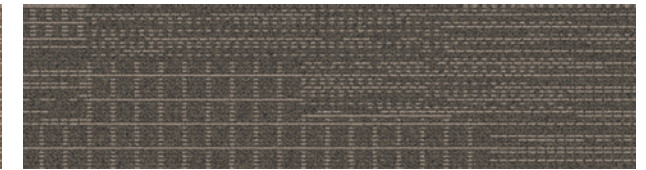


PRODUCT CT111 COLOR 104343 SLATE INSTALLED ASHLAR

CT111 Colorline



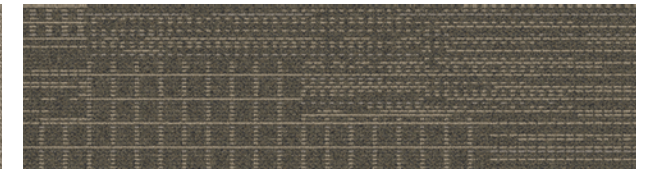
104338 TOPAZ



104339 WALNUT



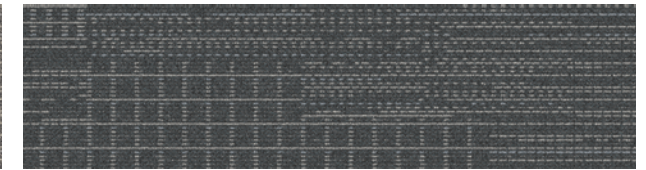
104340 SAGE



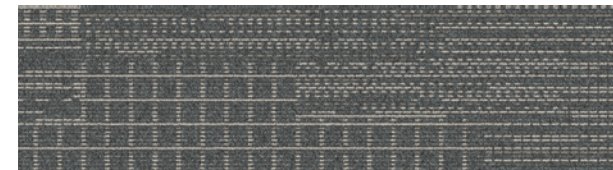
104341 TARRAGON



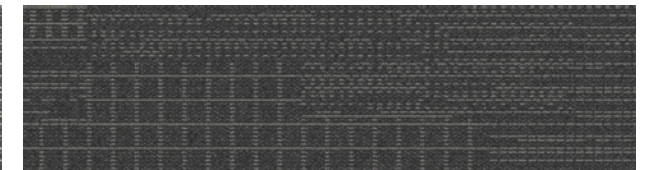
104342 PEWTER



104343 SLATE



104344 STEEL



104345 ONYX

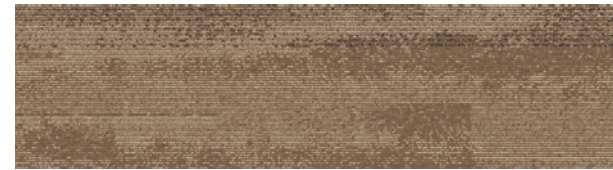
Specifications **i2**

Modular, 25cm x 1m	146570AK0H
Backing System	GlasBac®RE Tile
Yarn Manufacturer	Universal
Yarn System	Post-Consumer Content Type 6,6 Nylon
Color System	100% Solution Dyed
Construction	Tufted Textured Loop
Lifetime Antimicrobial	Intersept®
Soil/Stain Protection	Protekt2®
Pile Thickness	0.085 in., 2.2 mm
Pile Density	7,200
Total Recycled Content	70% (34% Post-Consumer)
Indoor Air Quality	CRI Green Label Plus #GLP0820

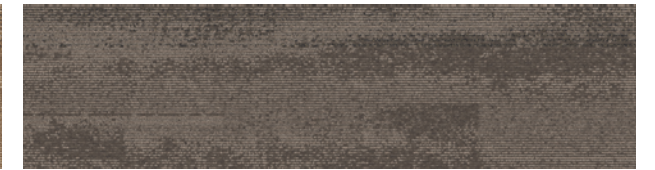




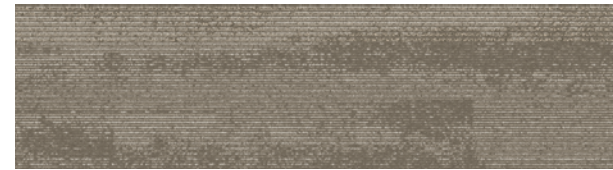
CT112 Colorline



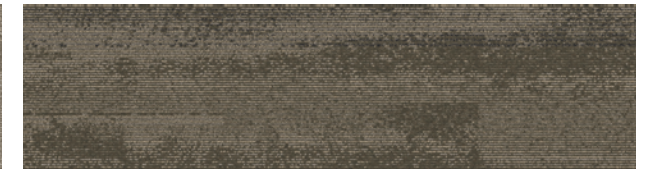
104346 TOPAZ



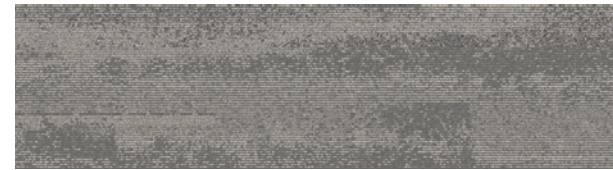
104347 WALNUT



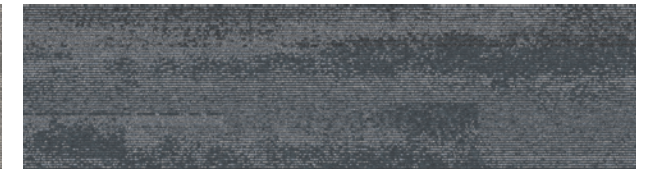
104348 SAGE



104349 TARRAGON



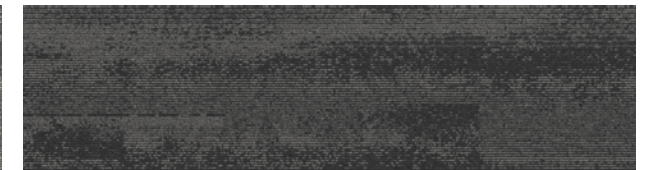
104350 PEWTER



104351 SLATE



104352 STEEL



104353 ONYX

Specifications **i2**

Modular, 25cm x 1m	123770AK0H
Backing System	GlasBac®RE Tile
Yarn Manufacturer	Universal
Yarn System	Post-Consumer Content Type 6,6 Nylon
Color System	100% Solution Dyed
Construction	Tufted Cut & Loop
Lifetime Antimicrobial	Intersept®
Soil/Stain Protection	Protekt2®
Pile Thickness	0.091 in., 2.3 mm
Pile Density	7,516
Total Recycled Content	68% (33% Post-Consumer)
Indoor Air Quality	CRI Green Label Plus #GLP0820

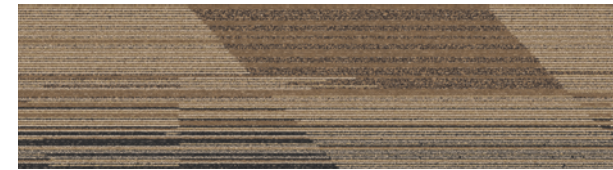


PRODUCT CT112 COLOR 104350 PEWTER INSTALLED ASHLAR

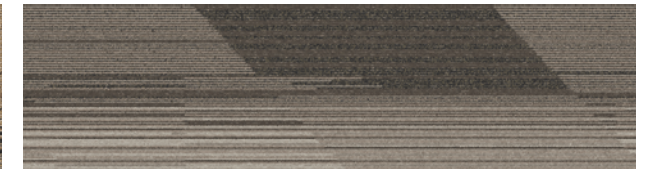


PRODUCT CT113 COLOR 104361 ONYX INSTALLED ASHLAR

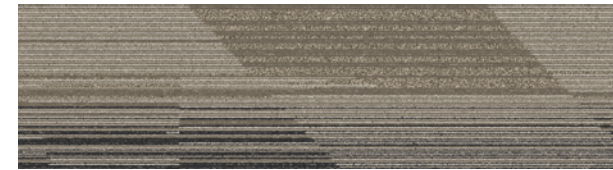
CT113 Colorline



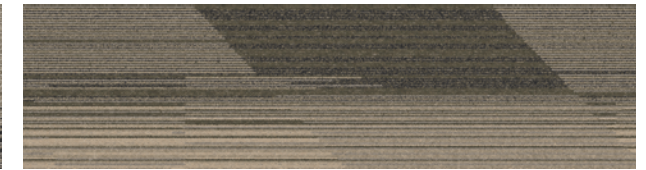
104354 TOPAZ



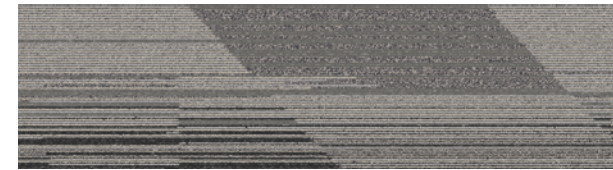
104355 WALNUT



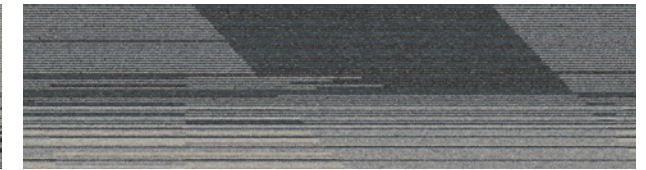
104356 SAGE



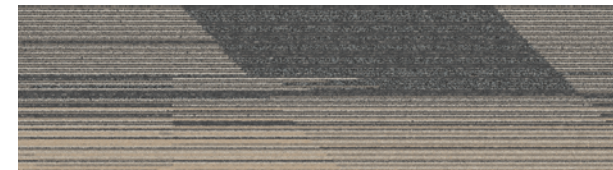
104357 TARRAGON



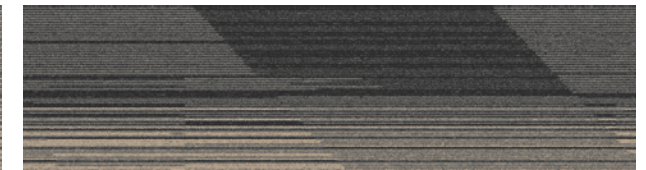
104358 PEWTER



104359 SLATE



104360 STEEL



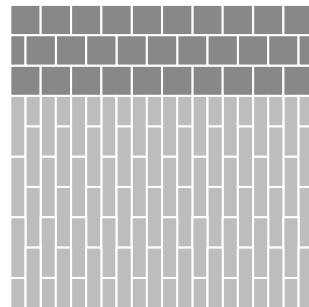
104361 ONYX

Specifications **i2**

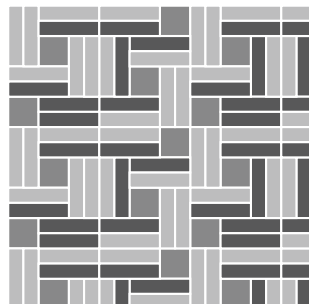
Modular, 25cm x 1m	123780AK0H
Backing System	GlasBac®RE Tile
Yarn Manufacturer	Universal
Yarn System	Post-Consumer Content Type 6,6 Nylon
Color System	100% Solution Dyed
Construction	Tufted Cut & Loop
Lifetime Antimicrobial	Intersept®
Soil/Stain Protection	Protekt2®
Pile Thickness	0.108 in., 2.7 mm
Pile Density	6,333
Total Recycled Content	68% (33% Post-Consumer)
Indoor Air Quality	CRI Green Label Plus #GLP0820



Design Ideas Below are two floor layouts showing how to create the design ideas shared in images featured in this brochure.



■ PRODUCT CT102 COLOR 103982 SAGE INSTALLED PATTERN BY TILE
 ■ PRODUCT CT111 COLOR 104340 SAGE INSTALLED PATTERN BY TILE



■ PRODUCT CT103 COLOR 103972 ONYX INSTALLED PATTERN BY TILE
 ■ PRODUCT CT112 COLOR 104353 ONYX INSTALLED PATTERN BY TILE
 ■ PRODUCT CT113 COLOR 104361 ONYX INSTALLED PATTERN BY TILE

www.interface.com

Why Our Modular Carpet?



i2® Modular Carpet

Minimize Waste & Save Money. Interface's i2 styles have mergeable dye lots. That means i2 tiles from different dye lots always blend with tiles of the same color, even when individual tiles are selectively replaced years later. This minimizes the need for attic stock and saves money. And i2 styles that install non directionally generate an average of only 1.5% installation waste as compared to 3-4% for typical modular carpet and an average of 14% for traditional roll carpet.



Cool Carpet™

Help Stop Global Warming and Earn a LEED® Innovation Credit. ALL Interface modular carpet sold in North America is third party verified climate neutral Cool Carpet. Cool Carpet zeros out all greenhouse gas (GHG) emissions associated with the entire lifecycle of your carpet. And climate neutral verified Cool Carpet may be eligible for a USGBC or CaGBC LEED Innovation Credit.



TacTiles®

No Glue Installation. Our revolutionary TacTiles installation system eliminates the need for glue, adhering tiles securely together to form a floor that "floats" for greater flexibility, easier replacement and long-term performance. The result? Less mess, less waste and virtually no VOCs, not to mention an environmental footprint that is over 90% lower than that of traditional glue adhesives.



Intersept®

Mold Protection. Our proprietary preservative, Intersept, protects our modular carpet against mold growth and odor-causing bacteria — guaranteed. Intersept treated carpet, with proper maintenance, shows no mold or bacterial growth when tested per the ASTM E2471 Standard Test Method. Intersept is low in toxicity, water insoluble and contains no arsenic, heavy metals, phenols or formaldehyde.



ReEntry® 2.0

Recyclable is Now a Reality. Our ReEntry 2.0 program uses innovative technology that gives us the ability to cleanly separate the face fiber and backing of nearly any carpet type. Separated Type 6 and 6,6 nylon are recycled into new 6 and 6,6 nylon, while separated GlasBac® and similar competitor backings are recycled into new GlasBac®RE non-virgin PVC backing using our Cool Blue™ technology. The result? Products with up to 81% total recycled content, including as much as 35% post-consumer content.



Sustainable Choice

Environmental Responsibility. Interface was the industry's first to earn an EPD (Environmental Product Declaration), which evaluates consistent factors based on full lifecycle assessment (LCA). We achieved an EPD based on our Convert™ products and have now expanded our EPDs into multiple categories covering more than 90% of our products.

In addition, all Interface products with GlasBacRE backing meet the Platinum level of the NSF/ANSI 140 Sustainable Assessment for Carpet. GlasBac or NexStep® backed products meet the Gold level. All may contribute toward a USGBC or CaGBC LEED Innovation Credit.



Third Party Certifications



Cool Carpet – Our third party verified carbon offset program zeroes out all greenhouse gas (GHG) emissions associated with the entire lifecycle of your carpet.



Environmental Product Declaration (EPD) – A statement of product ingredients and environmental impacts over the entire life cycle of a product. A comprehensive life cycle assessment (LCA) is performed to ISO standards to develop an EPD, after which both the EPD and LCA must be third party verified.



Sustainable Assessment for Carpet – The only carpet sustainability standard in North America that evaluates the environmental impact of carpet for its entire lifecycle.



CRI Green Label Plus – An independent testing program that identifies carpet and adhesives with very low emissions of VOCs to help improve indoor air quality.