

Level Set Collection | LVT Stones

With thoughtful consideration for design, performance and a sustainable path, we've crafted a foundational collection of luxury vinyl tiles that fit perfectly into the Interface flooring systems.

Level Set Natural & Textured Stones is a selection of 50cm x 50cm squares in classic stone looks with patterns inspired by distressed, reclaimed and exposed materials. They're a perfect match for our Skinny Planks™ and square carpet tiles, it is also a perfect fit in terms of thickness. This means you can easily install our resilient and soft flooring to create an integrated floor or inset rug, and move effortlessly from surface to surface without transition strips.

We design all our products with the ability to feed ReEntry®, our reclamation program. And, of course, like all of our products made around the world, the Level Set Collection is carbon neutral—just some of the many steps we take toward creating a climate fit for life. Join the **#ClimateTakeBack** movement.



PRODUCT TEXTURED STONES **COLOR** A00303 WARM POLISHED CEMENT **INSTALLED** MONOLITHIC





PRODUCT TEXTURED STONES COLOR A00308 LIGHT CONCRETE INSTALLED BRICK







LVT PRODUCT TEXTURED STONES COLOR A00301 POLISHED CEMENT INSTALLED NON DIRECTIONAL
FLOR PRODUCT SCOTTISH SETT™ COLOR 105434 PLAID NATURAL INSTALLED MONOLITHIC

Specifications

| | |
|----------------------|------------------------------------|
| Product Number | A001 (<i>Natural Stones</i>) |
| Product Number | A003 (<i>Textured Stones</i>) |
| Product Construction | High Performance Luxury Vinyl Tile |
| Class / ASTM F1700 | Class III Printed Vinyl Tile |
| Wear Layer Thickness | 22 mil |
| Total Thickness | 4.5 mm |
| Backing Class | Commercial Grade |
| Finish | Ceramor™ Coating |
| Nominal Dimensions | 50cm x 50cm (19.69 in x 19.69 in) |

Performance

| | |
|-------------------------|--|
| IIC Sound Rating | (ASTM E492-09) 57 IIC |
| Slip Resistance | (ASTM D2047) >0.55 wet/dry, ADA Compliant |
| Static Load Limit | (ASTM F970) 1500 psi |
| Flexibility | (ASTM F137) Passes |
| Resistance to Heat | (ASTM F1514) Passes |
| Resistance to Light | (ASTM F1515) Passes |
| Radiant Flux | (ASTM E648) Class I |
| Smoke Density | (ASTM E662) Passes, ≤ 450 |
| Size & Squareness | (ASTM F2055) Passes, +/- 0.016 in. per linear foot |
| Thickness | (ASTM F386) Passes |
| Dimensional Stability | (ASTM F2199) Passes |
| Residual Indentation | (ASTM F1914) Passes |
| Resistance to Chemicals | (ASTM F925) Passes |

Environmental

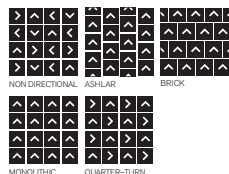
| | |
|----------------------------------|---|
| Indoor Air Quality | FloorScore®/CDPH 01350 Certified for low-VOC emissions |
| Material Composition | Free of Ortho Phthalates, Added Formaldehyde and Heavy Metal Stabilizers |
| Ingredients & Life Cycle Impacts | Environmental Product Declaration |
| Carbon Footprint | 3rd Party Verified Carbon Neutral |
| Sustainability Assessment | NSF/ANSI 332, Meets Certification Guidelines |
| LEED v4 | Contributes to IECQ: <i>Low Emitting Materials</i> ; M&R: <i>EPD</i> and <i>EPR</i> |
| End of Life | Fully Recyclable LVT to Carpet Tile Backing |

Packaging

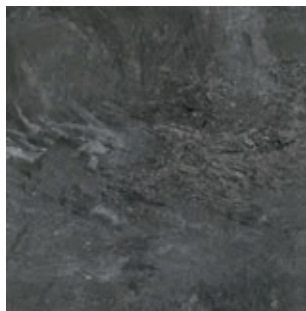
| | |
|------------------------|-------------------------------------|
| Square Feet per Carton | 26.91 sq. ft. (2.5 m ²) |
| Pieces per Carton | 10 |
| Weight per Carton | 40 lbs (18 kg) |
| Cartons per Pallet | 40 |
| Pallets per Truckload | 20 |

Technical Information

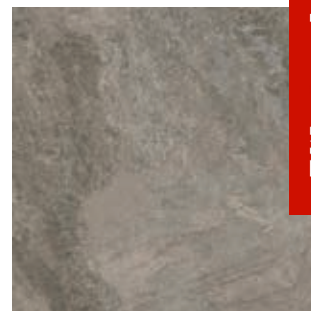
| | |
|----------------------|--|
| Installation | See Interface LVT Installation Guidelines online |
| Maintenance | See Interface LVT Maintenance Guidelines online |
| Reclamation | Recyclable through ReEntry® - Call 1.888.733.6873 (U.S.) / 1.866.398.3191 (Canada) |
| Warranty | 15 Year Limited Commercial Warranty |
| Installation Methods | Non Directional, Ashlar, Brick, Monolithic, Quarter-Turn |



Natural Stones Colorline



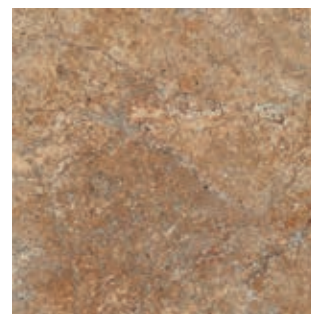
A00101 JET MIST



A00104 WARM IMPALA MARBLE



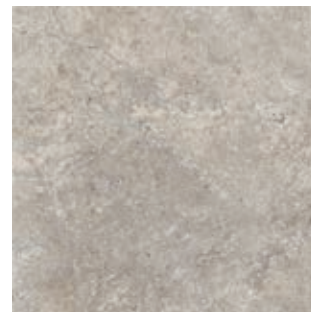
A00102 MARONE DARK MARBLE



A00105 PIETRASANTA WARM MARBLE



A00103 COOL IMPALA MARBLE

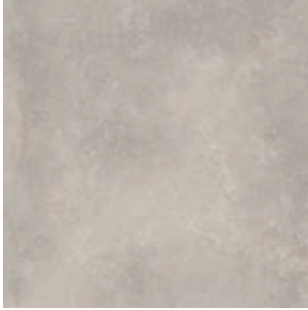


A00106 BOTTICINO MARBLE



All product specifications reflect averages derived from product sample testing, are subject to normal manufacturing and testing tolerances and inherent pattern variances, and may be changed without notice. For more information about these and other important attributes of the product(s) described herein, including recycled content and product warranty information, please see our full LVT product disclaimer @ interface.com.

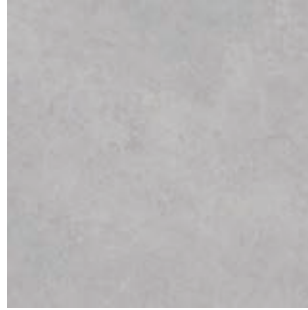
Textured Stones Colorline



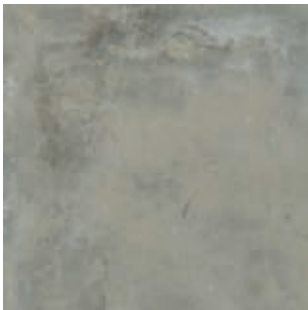
A00301 POLISHED CEMENT



A00304 EMPERADOR GRAY



A00308 LIGHT CONCRETE



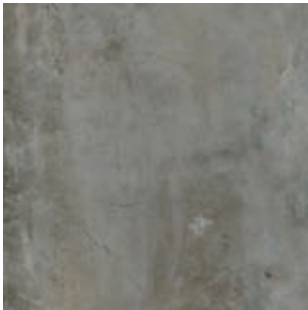
A00302 COOL POLISHED CEMENT



A00305 EMPERADOR TAUPE



A00309 MEDIUM CONCRETE




A00303 WARM POLISHED CEMENT



A00306 JERSEY MARBLE



A00310 DARK CONCRETE

The image shows a close-up of a floor transition. On the left, there is a dark grey, textured LVT (Luxury Vinyl Tile) with a stone-like pattern. On the right, there is a grey carpet with a 'Plain Stitch' texture. A thin, dark metal transition strip is visible, which is described as not being needed for a seamless transition between the two materials. The overall scene is lit with soft, even light, highlighting the textures of both materials.

Interface Modular Resilient LVT
and Modular Carpet allow you to
seamlessly move from hard to soft
surfaces. No transition strip needed.

Integrated System.

Say goodbye to transition strips and doubling up. Our modular resilient floorings are made to work as a system with our modular carpet. The compatible size and height of our products allows you to integrate modular carpet for an inset rug or an adjacent field – no transition strip required. You'll avoid doubling up on materials and save money.

Real Flexibility.

Create a unique look that lasts. Interface modular resilient LVT makes it easy to extend the life of your floor. From simple maintenance like damp mopping to selectively replacing damaged tiles, your flooring investment will stand the test of time - beautifully and effortlessly.

Circular System.

Keep flooring out of the landfill. Our modular resilient LVT is produced with a controlled material stream so it can be reclaimed and recycled into our GlasBac®RE recycled content backing through our ReEntry® program.

Noise Reduction.

Silence distractions. Interface is helping create +Positive spaces™ with our LVT with Sound Choice backing. Sound Choice is a specially formulated backing developed for superior noise reduction, offering you best-in-class performance for reduced impact sound and floor to floor sound transmission.



High Performance from Top to Bottom.

- 1. Ceramor™ Coating.** Minimizes everyday scratching and scuffing.
- 2. Wear Layer.** High quality layer enabling 15 years of resilience and performance.
- 3. Print Film.** Provides outstanding visuals of natural materials and Interface innovative designs.
- 4. Core Sheet.** Creates a thickness for a stronger core and reduces telegraphing from beneath.
- 5. Fiberglass.** Adds dimensional stability and controlled flexibility.
- 6. Core Sheet.** Creates a thickness for a stronger core and reduces telegraphing from beneath.
- 7. Sound Choice™.** Provides comfort and superior acoustic performance.

Third Party Certification.

Carbon Neutral Floors. All Interface flooring sold globally is third party verified carbon neutral. We've taken a holistic approach to achieve carbon neutrality, first through reducing the carbon footprint of our products and then using carbon offsets for the remainder.

Environmental Product Declaration (EPD). Interface LVT products are covered by an EPD. An EPD provides a comprehensive statement of product ingredients and environmental impacts based upon life cycle assessment performed to ISO standards.

Sustainable Assessment. Interface LVT meets the certification standards of the NSF/ANSI 332 Sustainability Assessment for Resilient Floor Coverings. This standard evaluates the environmental impact of resilient floor covering for its entire lifecycle.

Indoor Air Quality. All Interface modular flooring products meet the highest standards for indoor air quality. Interface LVT is FloorScore® Certified, assuring very low emissions of VOCs.







PLEASE RECYCLE

Printed on 50% post consumer waste (PCW) fiber manufactured using wind power.

We have tried our very best to accurately represent product colors. However, due to the nature of printed materials, color of actual products may vary slightly. Please request a sample to see actual product color.



www.interface.com

United States Headquarters

1503 Orchard Hill Road
LaGrange, GA 30240
1.800.634.6032

Canadian Headquarters

233 Lahr Drive
Belleville, ON K8N 5S2
1.800.267.2149 ext.52128

Brazilian Headquarters

Rua Surubim, 577 - Conjuntos
73/74 7º Andar
04571-050 - São Paulo - SP
+ 55 11 2196 0900

Latin American Headquarters

Montes Urales # 415 Piso 6
Col. Lomas de Chapultepec
México City, D.F. 11000
Mexico
+ 52 55 6395 5100

CIM # IFS00825 02/2019



Climate change is undeniable. And reversible. Our mission is to prove it.
Join the #ClimateTakeBack and help create a climate fit for life.