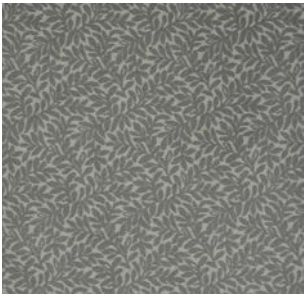




18200 Lothian



18400 Perthshire



18500 Shetland



18700 Newburgh



18800 Carloway



18310 Hillcrest

Interdeco™

Style Name	SUITE RETREAT	
Collection Name	Social Spaces	
Style Number	54518	
Product Type	Broadloom	
Construction	Cut Pile Print	
Fiber	Eco Solution Q® Nylon Print	
Dye Method	Printed	
Primary Backing	Synthetic	
Secondary Backing	Classicbac	
Traffic Rating	Heavy	
	U.S.	Metric
Product Size	12 ft	3.66 m
Gauge	1/10 in	39.37 per 10 cm
Stitches	13 per in	49 per 10 cm
Finished Pile Thickness	0.209 in	5.31 mm
Average Density	6201 oz/yd <sup>3</sup>	
Total Thickness	0.331 in	8.41 mm
Tufted Weight	36 oz/yd <sup>2</sup>	1220.6 g/m <sup>2</sup>
Pattern Repeat	0.75 ft W X 1.5 ft L	22.86 cm W X 45.72 cm L

## Recommended Installation Methods

Direct Glue

## Performance Testing

Pill Test	Pass
Radiant Panel	<b>Class I</b>
NBS Smoke	<b>Less than 450</b>
Electrostatic Propensity	<b>Less than 3.5 kv</b>
CRI Greenlabel Plus	GLP8878
ADA Compliance	>0.6, meets the recommended static coefficient of friction for ADA walking surfaces and accessible routes

Test Reports may be included or listed by the manufacturing/inventory style number as opposed to the noted selling style number.

## Warranties

**Eco Solution Q Nylon (print base) Classicbac Twenty Year Commercial Limited Warranty**

## Environmental

Recycled Content **Pre-consumer - <1%, Post-consumer - 0%**

Specifications are subject to nominal manufacturing variance. Material supply and/or manufacturing processes may necessitate changes without notice.