



Interdeco™

# Living Local

Chromascope   Optic Hues   Stonework   Terrazzo   Wood



As the digital world becomes more omnipresent in our lives, color can provide the engaging stimuli necessary to help us reclaim our humanity and our place within the ecosystem. Subdued pastoral brights wash over natural earth tones to bring biophilic harmony through Living Local: Chromascope. The Chromascope product line of LVT takes its hues from the places where we find both solace and renewed focus: whether it be sunrise over a mountain peak, or the deep shading of the forest.

Offered in a 12" X 24" format across 18 colors, the Chromascope portfolio allows for a wide variety of installation possibilities. Using the complete system makes it easy to create a space that is as unique as its inhabitants.





# Chromascope

Living Local Chromascope is a 2.5mm thick 12" X 24" plank LVT that provides ultimate flexibility of design with high performance. Featuring a 20mil heavy commercial wear layer, Mohawk Group's premium M-Force Ultra finish – a complete performance system for LVT, and sustainably manufactured in our Dalton, GA resilient facility, designers and end-users can be proud of and confident in their specification.



## PERFORMANCE FOR LIFE

Chromascope features our M-Force Ultra technology providing exceptional scratch, stain and dent resistance, and easy maintenance for lasting beauty.



## SEAMLESS TRANSITIONS

No transition strips needed when coordinating Chromascope with any of our EcoFlex Matrix backed carpet tile products, reducing installation time and costs.



## QUICKSHIP

Select colors available through Mohawk Group's QuickShip and Ready to Ship programs. Visit [mohawkgroup.com](http://mohawkgroup.com) to view available colors and inventories.

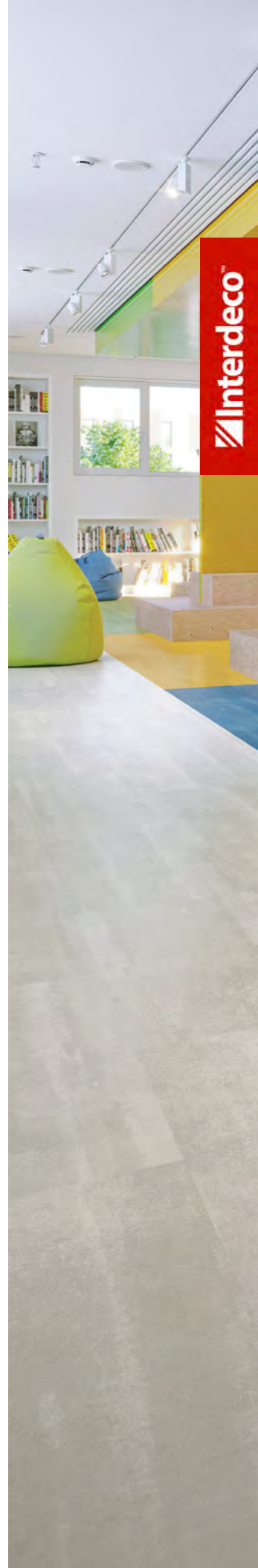


## SUSTAINABLE

All commercial LVT manufactured in our Dalton, GA resilient facility utilizes our SCS Certified 100% recycled content allocation system, so no product waste ever ends up in a landfill.

## ADDITIONAL FEATURES

- 20-Year M-Force Ultra Commercial Warranty
- Floorscore Certified for Low VOCs
- May Contribute toward LEED/WELL
- No Ortho-Phthalates
- Made in the USA







# Chromascope COLORWAYS



120 Alabaster



910 Winter Mood



980 Winterfell



860 Cabin Fever



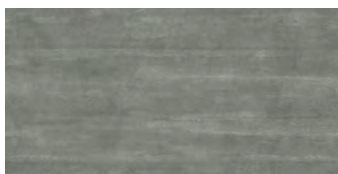
230 Summer Suede



270 Prairie Wind



250 Dusty Trail



940 Jack Rabbit



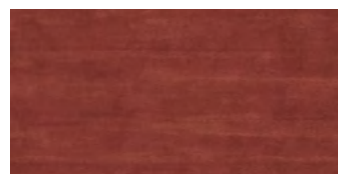
960 Dire Wolf



360 Yellow Bird



440 Outrageous Orange



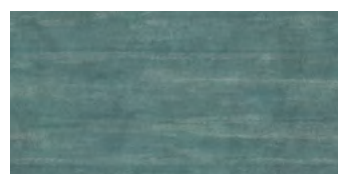
550 Firetruck Red



760 Grass Green



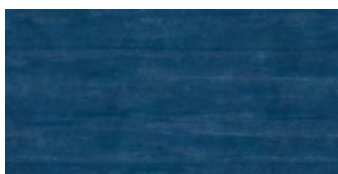
790 Lucky Green



672 Totally Teal



620 Sporty Blue



650 Patina Night



540 Royal Ornate







Rendered reality is a concept where nothing is as it seems. Optic Hues is rendered reality actualized. This resilient tile is influenced by the idea of the Visual Age — where humankind, having become fluent in the elements of graphics, photography, design and art, has more outlets for creative self-expression.

At first glance, Optic Hues gives the illusion of being a soft surface through different filters and digital graphics. A curated selection of 12 colorways gives designers and end users an eye-catching alternative to more traditional hard surface visuals.



 Interdeco™







# Optic Hues

Living Local Optic Hues is a 12" X 24" resilient plank that provides a uniquely abstracted textile design with exceptional durability in a 2.5mm LVT platform. A complete performance system includes a 20mil heavy commercial wear layer and our premium M-Force Ultra finish. Combining these innovations with the sustainable operations at our Dalton, GA facility, designers and end users can be proud of and confident in their specification.



## PERFORMANCE FOR LIFE

Optic Hues features our M-Force Ultra technology providing exceptional scratch, stain and dent resistance, and easy maintenance for lasting beauty.



## SEAMLESS TRANSITIONS

No transition strips needed when coordinating Optic Hues with any of our EcoFlex Matrix backed carpet tile products, reducing installation time and costs.



## QUICKSHIP

Select colors available through Mohawk Group's QuickShip and Ready to Ship programs. Visit [mohawkgroup.com](http://mohawkgroup.com) to view available colors and inventories.



## SUSTAINABLE

All commercial LVT manufactured in our Dalton, GA resilient facility utilizes our SCS Certified 100% recycled content allocation system, so no product waste ever ends up in a landfill.

## ADDITIONAL FEATURES

- 20-Year M-Force Ultra Commercial Warranty
- Floorscore Certified for Low VOCs
- May Contribute toward LEED/WELL
- No Ortho-Phthalates
- Made in the USA

Mohawk Group

 Interdeco™

Optic Hues 810 Tea Tan, 759 Verdigris



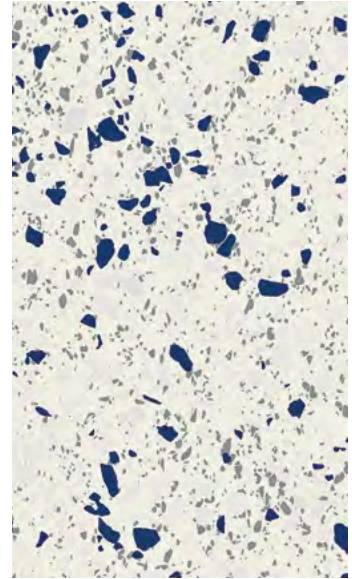
Optic Hues works beautifully on its own or as a coordinating style installed alongside other products in the Living Local LVT portfolio. The flecks of Terrazzo and the colors of Chromascope pair perfectly with Optic Hues. Integrate a variety of designs and visuals into your project to create unique floorscapes, cues for wayfinding and social distancing — all with ease.



Optic Hues 665 Azul



Chromascope 650 Patina Night



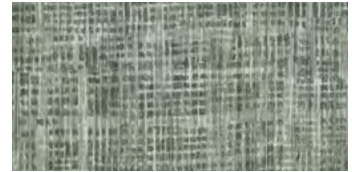
Terrazzo 725 Randazzo



415 Fresco



698 Indigo



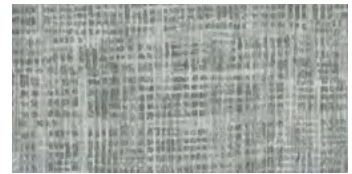
759 Verdigris



810 Tea Tan



820 Nuance



961 Ferro



968 Moonlit



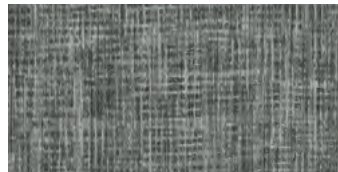
995 Charcoal



997 Silhouette



932 Gravel



938 Undertone



Shifted Focus 979 Silhouette, Optic Hues 968 Moonlit, 995 Charcoal, 997 Silhouette, Chromascope 940 Jack Rabbit, 960 Dire Wolf, 120 Alabaster



As perhaps the epitome of precise – yet often artistic – craftsmanship, masonry is one of civilization’s oldest trades, spanning thousands of years of innovation. Living Local: Stonework celebrates this time-honored craft for its use in functional and aesthetic purposes through natural motifs found in perfectly imperfect materials, textures and surfaces.

Offered in 14 unique colorways and visuals in 12” X 24” planks featuring concrete and stone designs that play off of the unique colors and forms stone takes across different cultures.





# Stonework

Living Local Stonework is a 2.5mm thick 12" X 24" plank LVT that provides ultimate flexibility of design with high performance. Featuring a 20mil heavy commercial wear layer, Mohawk Group's premium M-Force Ultra finish – a complete performance system for LVT, and sustainably manufactured in our Dalton, GA resilient facility, designers and end-users can be proud of and confident in their specification.



## PERFORMANCE FOR LIFE

Stonework features our M-Force Ultra technology providing exceptional scratch, stain and dent resistance, and easy maintenance for lasting beauty.



## SEAMLESS TRANSITIONS

No transition strips needed when coordinating Stonework with any of our EcoFlex Matrix backed carpet tile products, reducing installation time and costs.



## QUICKSHIP

Select colors available through Mohawk Group's QuickShip and Ready to Ship programs. Visit [mohawkgroup.com](http://mohawkgroup.com) to view available colors and inventories.



## SUSTAINABLE

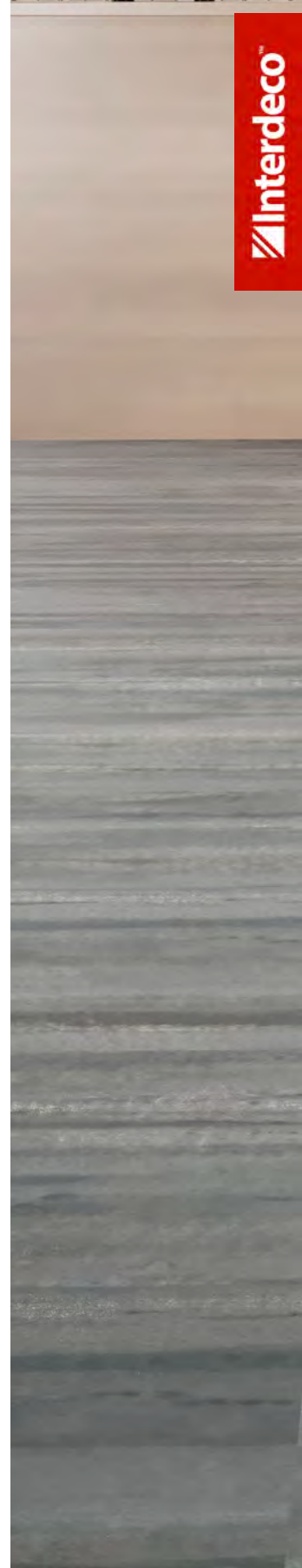
All commercial LVT manufactured in our Dalton, GA resilient facility utilizes our SCS Certified 100% recycled content allocation system, so no product waste ever ends up in a landfill.

## ADDITIONAL FEATURES

- 20-Year M-Force Ultra Commercial Warranty
- Floorscore Certified for Low VOCs
- May Contribute toward LEED/WELL
- No Ortho-Phthalates
- Made in the USA



Interdeco™

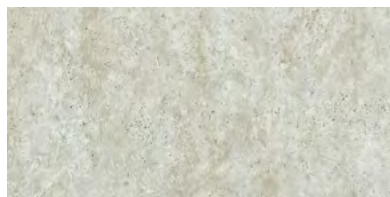




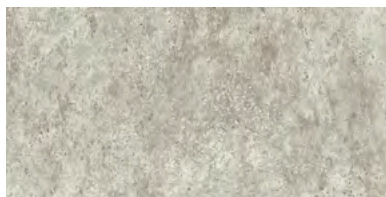




# Stonework COLORWAYS



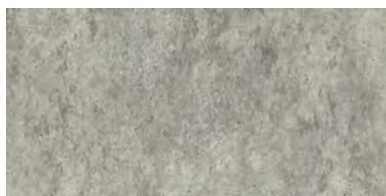
615 Tumbled Finish



225 Chiseled Edge



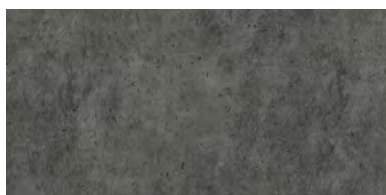
920 Fleuri



250 Metamorphic



950 Igneous



985 Stamped Concrete



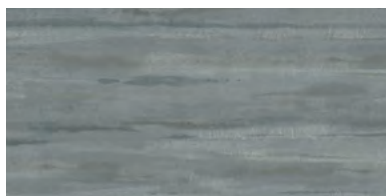
909 Roman Column



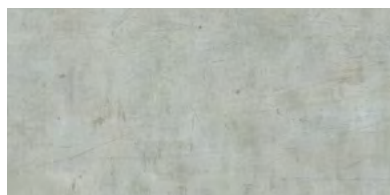
260 Accessible Beige



925 Tinsmith



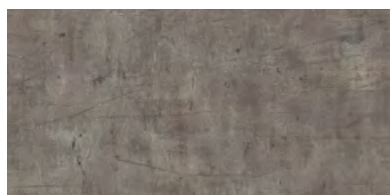
940 Patina



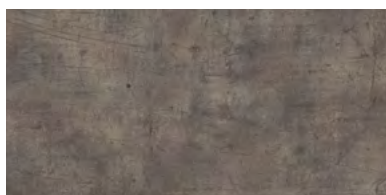
945 Silverplate



960 Weathering



870 Antique Finish



845 Warm Stone

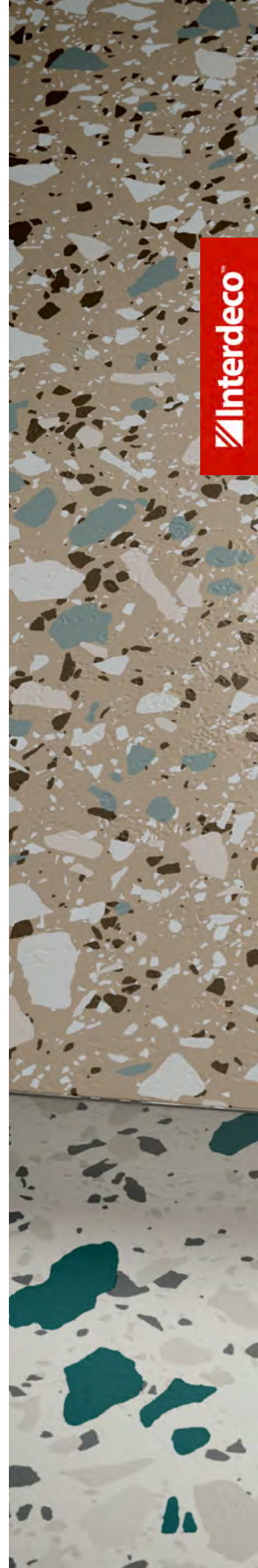






Terrazzo today is a classic flooring material in the built environment, its prolific use in modernist design a far contrast from its more humble beginnings in Italy. In recent years, terrazzo has experienced a renaissance, taking on new shapes, forms and formats in interiors.

Living Local Terrazzo brings a playful twist to this classic material by infusing the biophilic visual with colorful accents inspired by the digital world, now available in resilient LVT planks. The natural-hued base colorations make it easy to coordinate colorways within the collection, and with other flooring materials. Integrate multi-color tiles to incorporate cues for wayfinding, social distancing and unique floorscapes.



 Interdecò





# Terrazzo

Living Local Terrazzo is a 12" X 24" resilient plank that provides ultimate flexibility of design with high performance in a 2.5mm LVT platform. A complete performance system that includes a 20mil heavy commercial wear layer and our premium M-Force Ultra finish, coupled with the sustainable operations at our Dalton, GA facility, means that designers and end users can be proud of and confident in their specification.



## PERFORMANCE FOR LIFE

Terrazzo features our M-Force Ultra technology providing exceptional scratch, stain and dent resistance, and easy maintenance for lasting beauty.



## SEAMLESS TRANSITIONS

No transition strips needed when coordinating Terrazzo with any of our EcoFlex Matrix backed carpet tile products, reducing installation time and costs.



## QUICKSHIP

Select colors available through Mohawk Group's QuickShip and Ready to Ship programs. Visit [mohawkgroup.com](http://mohawkgroup.com) to view available colors and inventories.

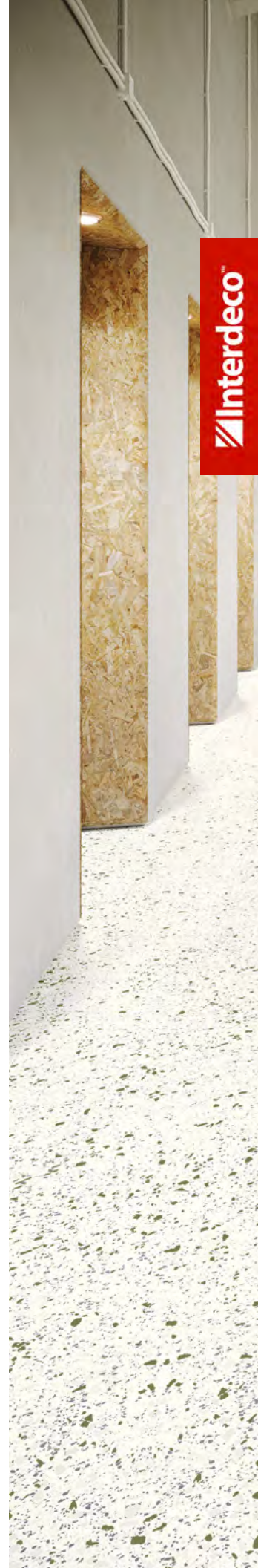


## SUSTAINABLE

All commercial LVT manufactured in our Dalton, GA resilient facility utilizes our SCS Certified 100% recycled content allocation system, so no product waste ever ends up in a landfill.

## ADDITIONAL FEATURES

- 20-Year M-Force Ultra Commercial Warranty
- Floorscore Certified for Low VOCs
- May Contribute toward LEED/WELL
- No Ortho-Phthalates
- Made in the USA



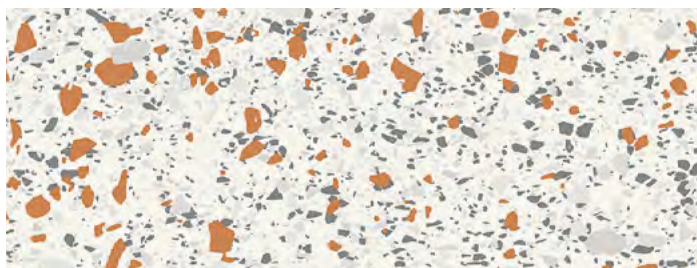
CONE



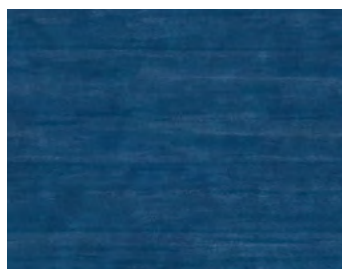
The colors of Living Local Terrazzo were designed to make it simple to coordinate with a wide variety of Mohawk Group products. The realistic flecks within the Terrazzo visuals pair perfectly with Living Local Chromascope, making it easy for designers to either inject more color into a space or balance their design using subtle neutrals.



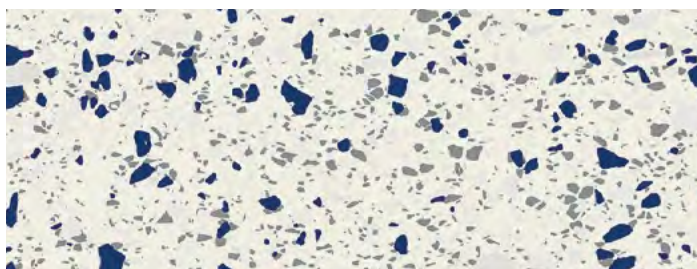
440 Outrageous Orange



722 Mercato



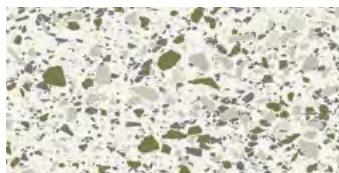
650 Patina Night



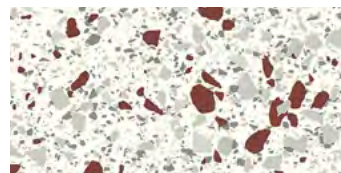
725 Randazzo



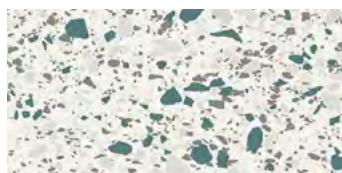
727 Tephra



736 Strabe



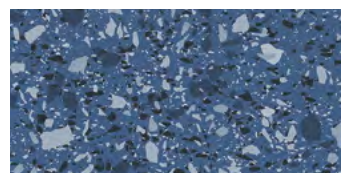
723 Vesuvius



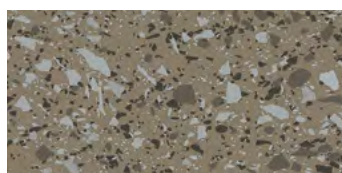
726 Messina



939 Linosa



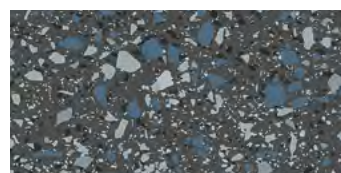
585 Mascali



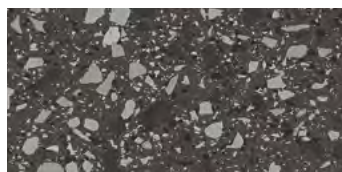
848 Mongibello



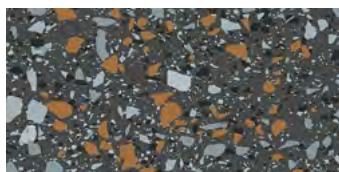
826 Catania



985 Somma



989 Valle de Bove



982 Basal



986 Lahar









Living Local Wood draws inspiration from natural wood visuals and features colors ranging from rich warm browns to cool grays. The aesthetically flexible shades and textures are designed to fit any interior, providing a core collection of LVT styles that you can use to bring homegrown appeal to a wide variety of projects.







# Wood

Living Local Wood is a 6" X 48" resilient plank that provides ultimate flexibility of design with high performance in a 2.5mm LVT platform. A complete performance system that includes a 20mil commercial wear layer and our M-Force™ finish, coupled with the sustainable operations at our Dalton, GA facility, means that designers and end-users can be proud of and confident in their specification.



## PERFORMANCE FOR LIFE

Wood features our M-Force technology providing exceptional scratch, stain and dent resistance, and easy maintenance for lasting beauty.



## SEAMLESS TRANSITIONS

No transition strips needed when coordinating Wood with any of our EcoFlex Matrix backed carpet tile products, reducing installation time and costs.



## QUICKSHIP

Select colors available through Mohawk Group's QuickShip and Ready to Ship programs. Visit [mohawkgroup.com](http://mohawkgroup.com) to view available colors and inventories.



## SUSTAINABLE

All commercial LVT manufactured in our Dalton, GA resilient facility utilizes our SCS Certified 100% recycled content allocation system, so no product waste ever ends up in a landfill.

## ADDITIONAL FEATURES

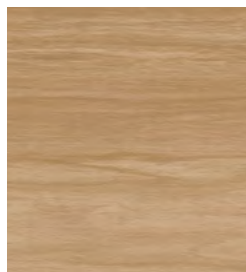
- 15-Year M-Force Commercial Warranty
- Floorscore Certified for Low VOCs
- May Contribute toward LEED/WELL
- No Ortho-Phthalates
- Made in the USA







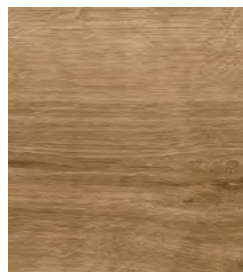
# Wood COLORWAYS



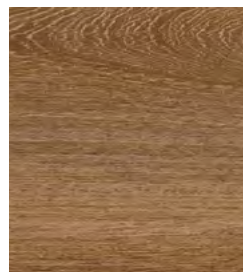
123 Western Woods



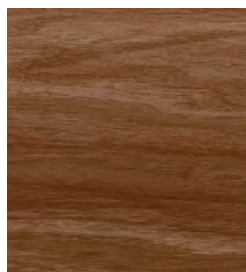
141 Gold



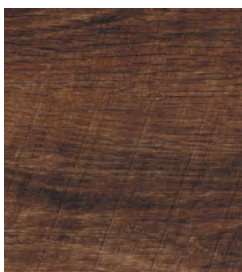
142 Sable



332 Cedar



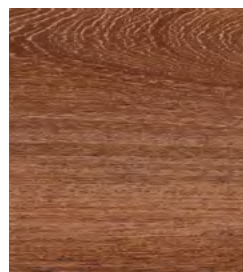
342 Down Town



358 Brick



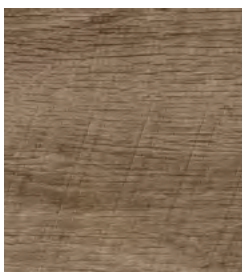
363 Regal Red



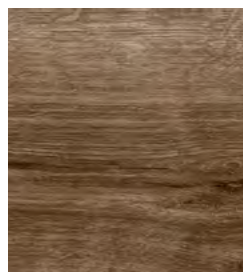
372 Suede



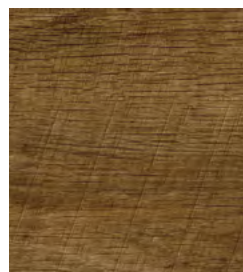
812 Tan Tone



829 Sandy



838 Beagle



851 Too Tan



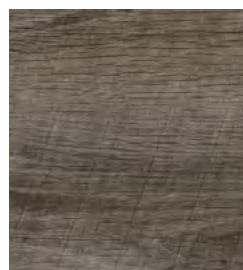
918 Silver



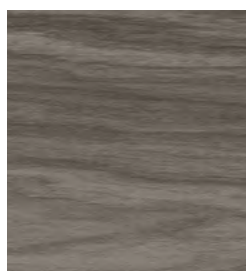
938 Pigeon



949 Gorgeous Gray



958 Two Tone



966 Shadow



989 Lead







# Living Local

Living Local celebrates the vibrant spirit of our local communities. Proudly manufactured in the USA, this collection features two product formats and multiple styles that work seamlessly together, including 6" X 48" wood planks and 12" X 24" stone, terrazzo and abstract visuals. All styles in this collection feature our M-Force technology, providing a complete performance system for LVT. All commercial LVT, including Living Local are manufactured using our SCS Certified 100% recycled content allocation system. Living Local, living beautifully.



## Specifications

**Product Type:** Glue Down LVT  
**Size:** 6"x48" & 12"x24"  
**Overall Thickness:** 2.5mm  
**Finish:** M-Force Ultra or M-Force  
**Wear Layer:** 20 mil  
**Country of Origin:** Made in USA



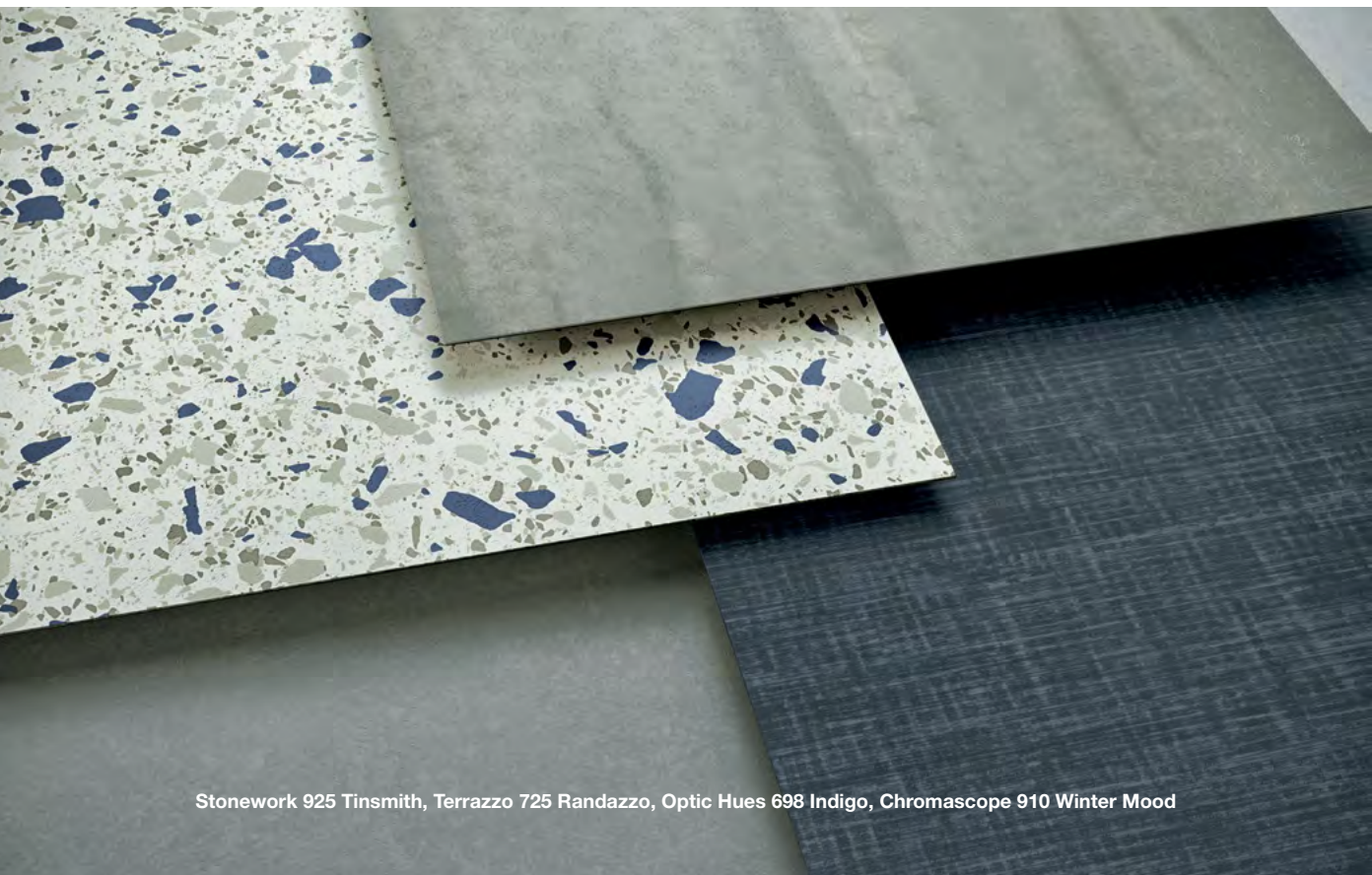
**M-FORCE ULTRA**  
Limited 20-Year  
M-Force Ultra Warranty.



**M-FORCE**  
Limited 15-Year  
M-Force Warranty.



**MADE IN THE USA**  
Living Local collection is proudly manufactured in Dalton, GA and helps to support our local economies.



Stonework 925 Tinsmith, Terrazzo 725 Randazzo, Optic Hues 698 Indigo, Chromascope 910 Winter Mood



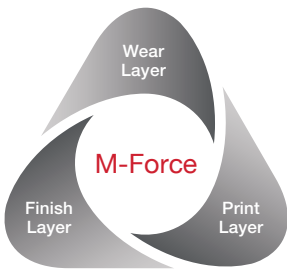
# M-Force™

COMPLETE PERFORMANCE SYSTEM FOR LVT

Staff moving equipment, students dragging chairs, employees spilling coffee—for all the life that goes on in your space, your floors will be protected with M-Force: the complete performance system that makes your floor look better longer.



## Three-Part Protection



M-Force is a combination of the finish layer, wear layer and design layer. We develop each layer individually for optimal performance, and then we bond the layers in a proprietary process that makes their performance exponentially greater together.

As a result, your floor looks better longer, with superior protection against scratches, stains, dents and wear, all while providing a crisp, clear visual and easy maintenance.

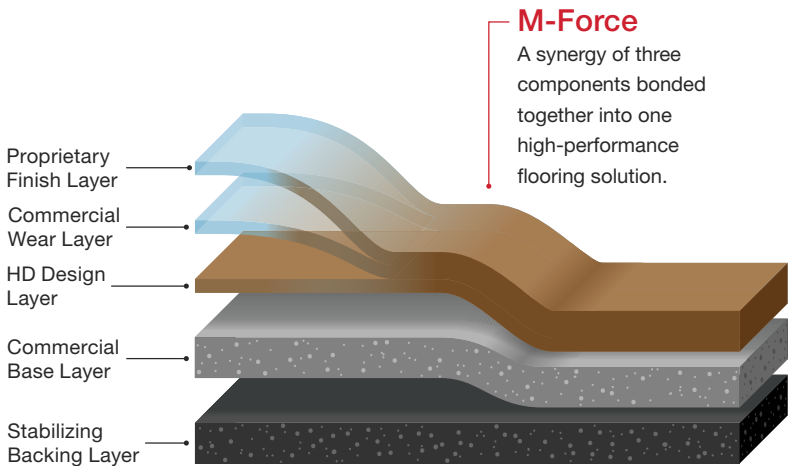
## Performance for Life.

You need a floor that beautifully supports all the life in your facility. And life doesn't stop where the industry testing standards stop. Foot traffic keeps walking, spills keep splashing, and heavy loads keep rolling. That's why we continually test M-Force floors to perform beyond the industry standards.

We work to exceed the standards, because M-Force works to ensure your floor looks better longer for everything that happens in your space. M-Force means you get performance for life.

## When Life Gets Extreme.

For more specialized or extreme areas of use, ask your Mohawk Group rep about M-Force Ultra—we engineered M-Force Ultra to provide even greater durability against scratches, dents and wear, and even higher resistance to the toughest stains.

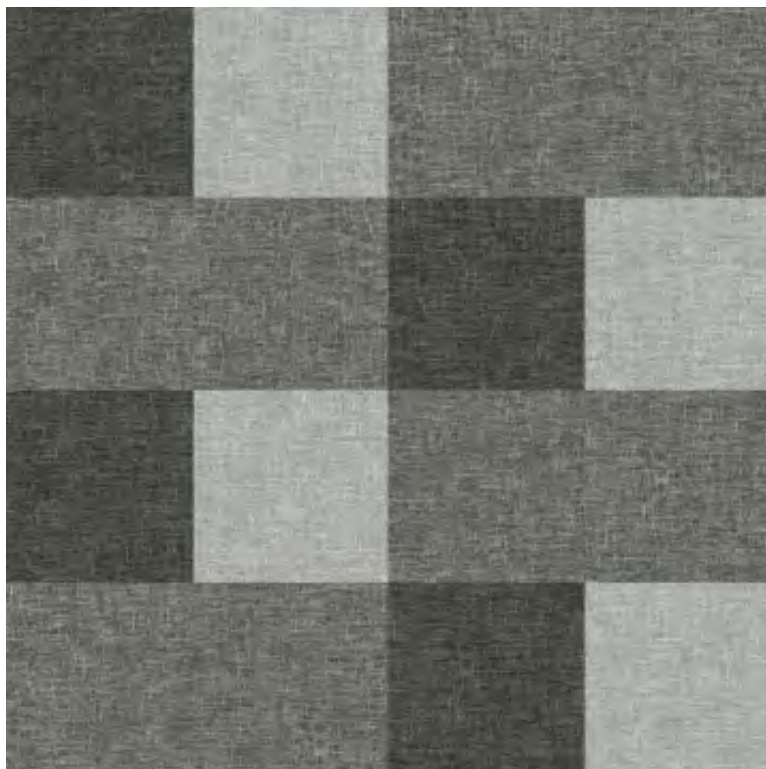


## The M-Force Warranty

- M-Force flooring carries a limited 15-year commercial warranty.
- M-Force Ultra flooring carries a limited 20-year commercial warranty.

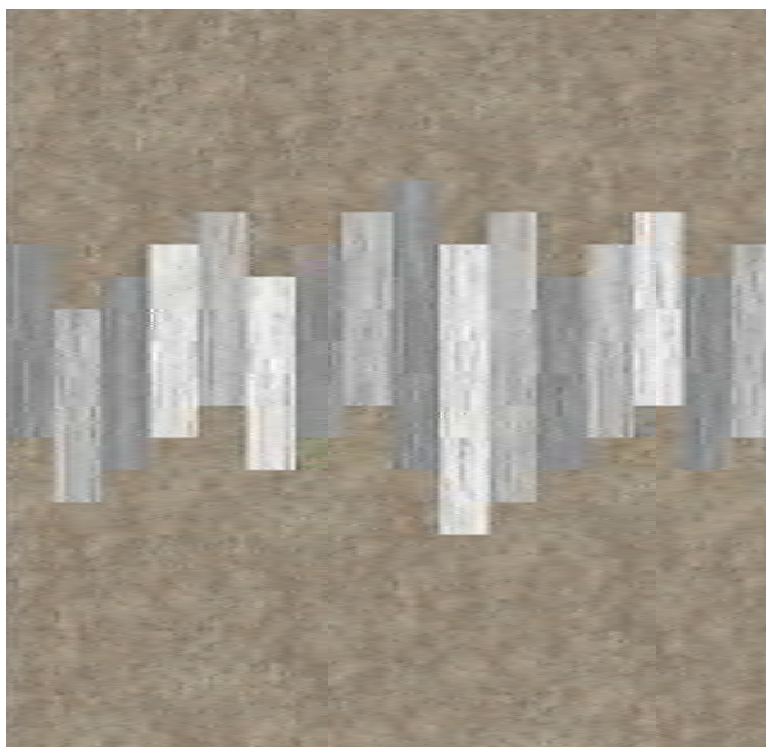


# Installation Inspirations



## Optic Hues

- 997 Silhouette
- 968 Moonlit
- 961 Ferro



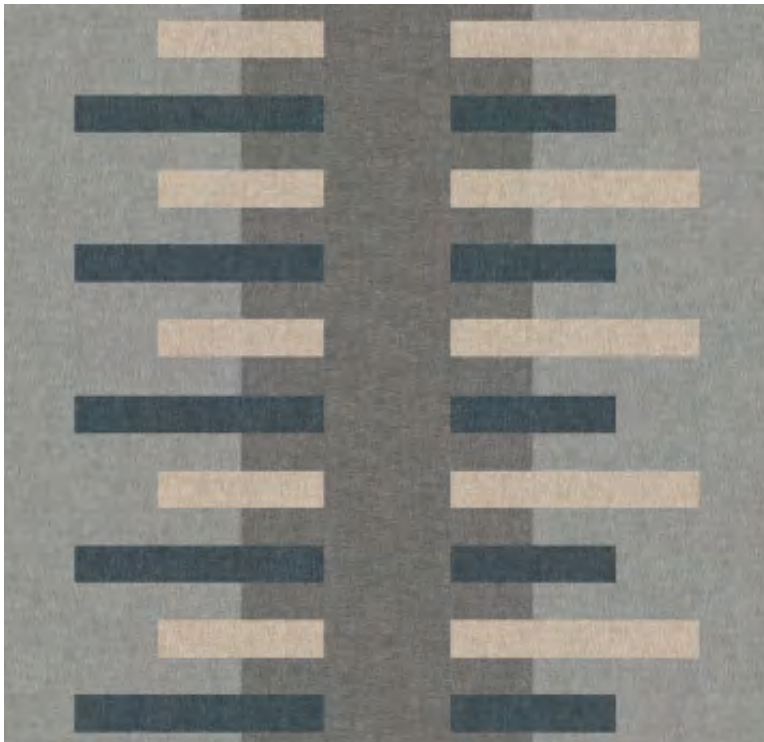
## Stonework

- 845 Warm Stone
- 909 Roman Column
- 925 Tinsmith
- 940 Patina



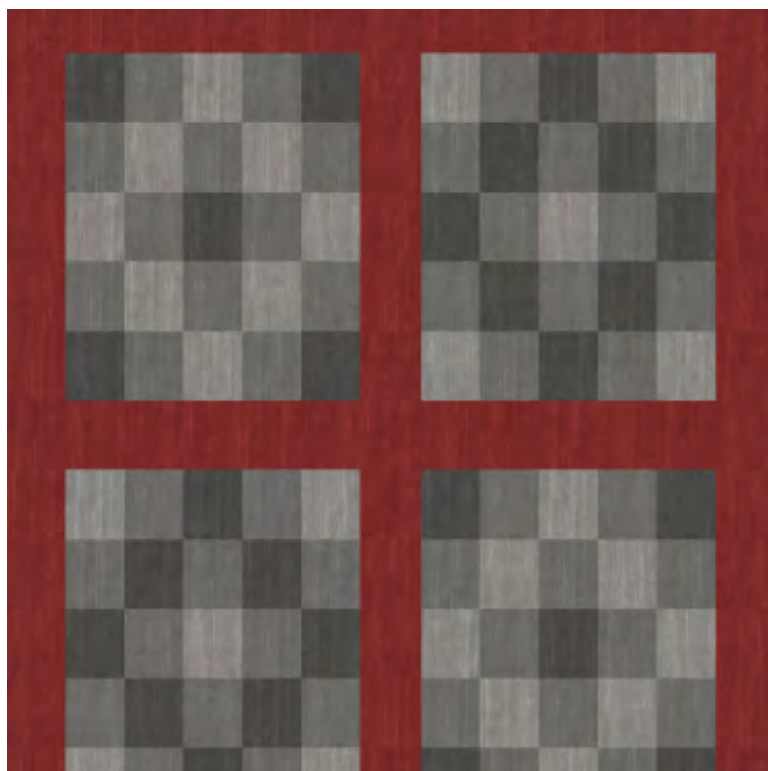
### Stonework

- 250 Metamorphic
- 920 Fluori
- 950 Igneous
- 985 Stamped Concrete



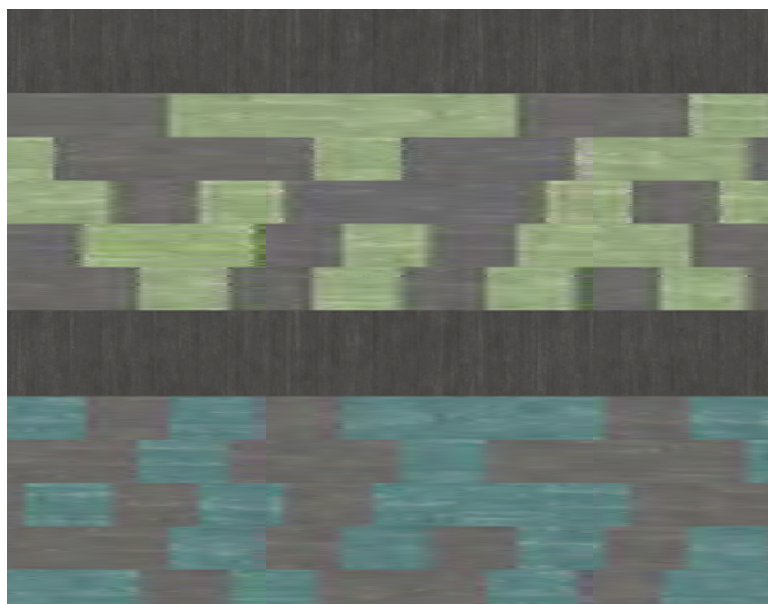
### Optic Hues

- 983 Undertone
- 997 Silhouette
- 415 Fresco
- 810 Tea Tan



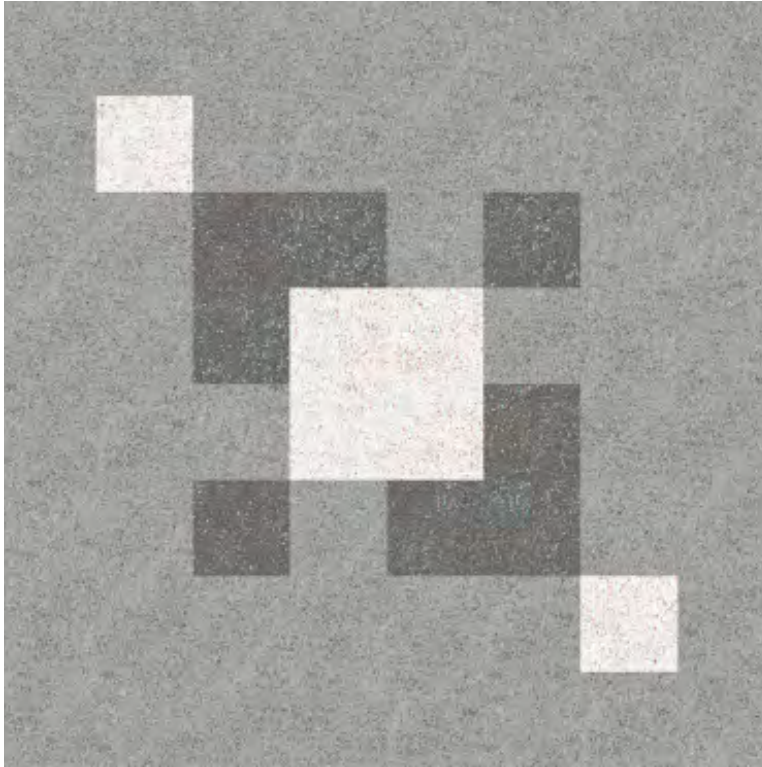
### Chromascope

- 550 Firetruck Red
- 910 Winter Mood
- 980 Jack Rabbit
- 960 Dire Wolf



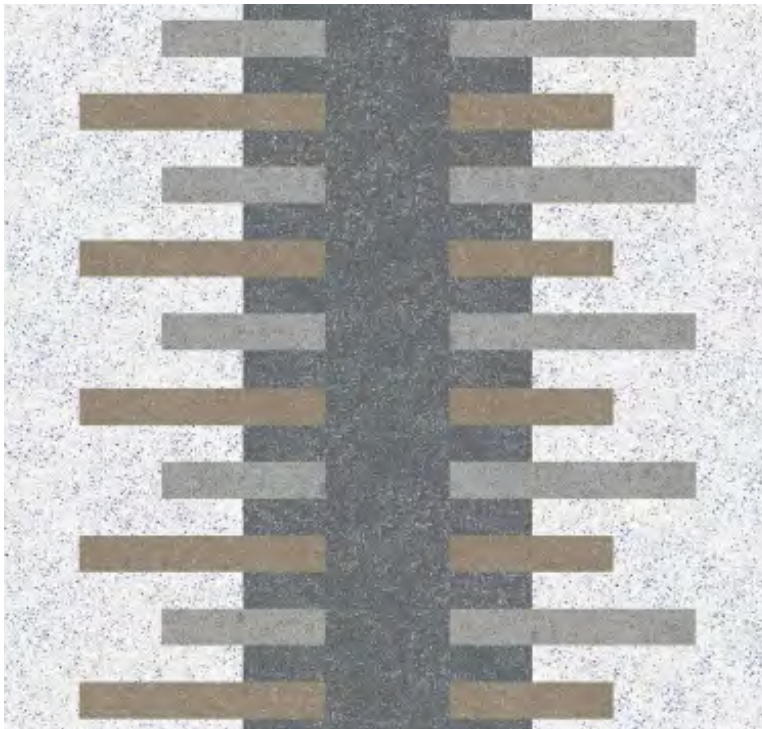
### Chromascope

- 760 Grass Green
- 672 Totally Teal
- 980 Jack Rabbit
- 960 Dire Wolf



**Terrazzo**

939 Linosa  
722 Mercato  
982 Basal



**Terrazzo**

725 Randazzo  
985 Somma  
848 Mascali  
939 Linosa



# Elemental Edges FINISHING ACCESSORIES

At Mohawk Group we believe in providing project solutions that are easy to select and readily available. Elemental Edges is a complete portfolio of free-to-ship accessories for all your flooring installation and finishing needs. The program is offered in 14 QuickShip colors that coordinate perfectly with our full suite of soft and hard surface products.



Explore more by visiting [mohawkgroup.com/products/elemental-edges](http://mohawkgroup.com/products/elemental-edges)



## Wall Base



Seamlessly coordinate your wall base and Mohawk Group floor covering from our variety of QuickShip wall base offerings.

### AVAILABLE IN

- Rubber
- Vinyl
- 4" or 6" in height
- Cove or straight
- 4' lengths or 96' & 120' rolls
- 1/8" gauge
- .080" gauge (4" Cove vinyl)



## Installation Accessories



Add a functional finishing touch to your coordinated color scheme with Mohawk Group installation accessories. Proprietary Rubber formulations are shrink and crack-proof, and won't fade, even in direct sunlight.

### CHOOSE FROM

- Universal Transitions
- Reducers
- Adaptors
- Cove Stick



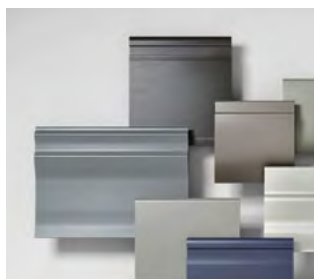
## Stair Solutions



Specify 12.5" regular tread or 20" integrated tread/riser, available in 48" and 72" lengths. Round and hammered finishes are available with standard square nose. All profiles are available with or without visually impaired strips.

### CHOOSE FROM

- Stair Treads
- Resilient Landing Tiles
- Risers
- Nosings



## Architectural Wall Base

Complement your space with the rich detail of Elemental Edges Architectural Wall Base, offered in a variety of designs, sizes and running line colors. Superior performance and durability allowing your project finishes to remain remarkable.

### AVAILABLE IN

- 8 design profiles
- 14 color-coordinated options

# Specifications

**Wood** (C2039), **Stonework** (C0179), **Optic Hues** (C0178),  
**Chromascope** (C0159), **Terrazzo** (C0180)

## DESIGN

Product Type	Luxury Vinyl Tile - Flexible
Size	
Wood	6" W x 48" L (152.4mm x 1219.2mm)
Chromascope, Stonework, Optic Hues, Terrazzo	12" x 24"
Overall Gauge	2.5mm
Wear Layer	20 mil (0.5mm)
Finish	
Wood	M-Force™
Chromascope, Stonework, Optic Hues, Terrazzo	M-Force™ Ultra
Edge Profile	
Wood	Micro Bevel
Chromascope, Stonework, Optic Hues, Terrazzo	Straight Edge
Emboss	Overall
Colors Available	
Wood, Chromascope	18
Stonework, Terrazzo,	14
Optic Hues	12
Packaging	
Pieces per carton	18 pcs/ctn
Square feet per carton	36 sqft/ctn
Lbs per carton	
Wood	29.70 lbs/ctn
Stonework	31.14 lbs/ctn
Optic Hues, Terrazzo, Chromascope	30.64 lbs/ctn
Cartons per pallet	60 ctn/pal

\*For detailed warranty, adhesive and installation information visit [mohawkgroup.com](http://mohawkgroup.com)

## PERFORMANCE

Construction	Commercial Grade Flexible LVT
Installation	Glue Down
Classification	ASTM F1700 - Class III, Type A - Smooth, Type B - Embossed
Squareness	ASTM F 2421 - Passes - $\pm 0.10"$ max
Size and Tolerance	ASTM F2421 - Passes - $\pm 0.16"/$ linear foot
Thickness	ASTM F386 - Passes - as specified $\pm 0.005"$
Flexibility	ASTM F137 - Passes - 1" mandrel
Dimensional Stability	ASTM F2199 - Passes - 0.020"/linear foot max
Static Load Limit	ASTM F970 - Passes, modified at 1000 psi
Residual Indentation	ASTM F1914 - Passes - Average less than 8% maximum single reading 10%
Resistance to Chemicals	ASTM F925 - Passes - No more than a slight change
Resistance to Light	ASTM F1515 - Passes - $\Delta E < 8$
Resistance to Heat	ASTM F1514 - Passes - $\Delta E < 8$
Critical Radiant Flux	ASTM E648 - Class 1 ( $> 0.45$ W/cm <sup>2</sup> )
Smoke Density	ASTM E662 Part A - Less than 450

## SUSTAINABILITY

Certification	FloorScore® Certified
Manufacturing Location	Made in the USA

## SERVICE

Warranty	
Wood	Limited 15-Year M-Force Warranty
Chromascope, Stonework, Optic Hues, Terrazzo	Limited 20-Year M-Force Ultra Warranty



Mohawk Group

Mohawk Group  
160 South Industrial Blvd.  
Calhoun, GA, 30701  
800.554.6637  
mohawkgroup.com

0208\_Feb/2021

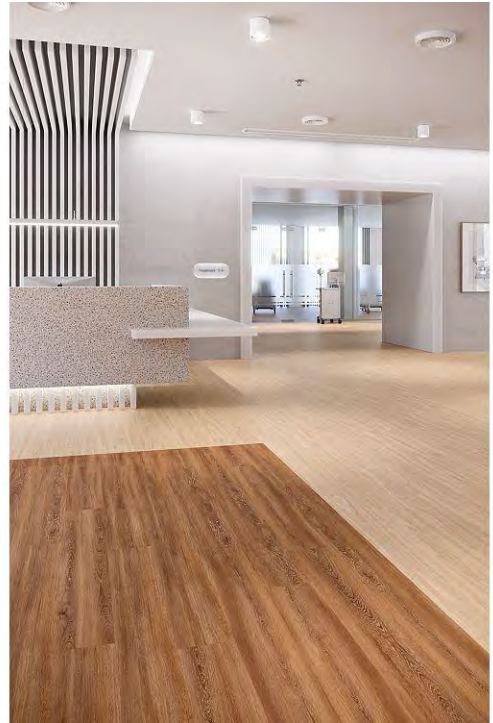
C0180 40PG BROCHR LT



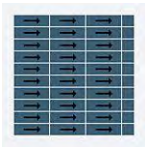
## Premium Wood

Collection	Living Local
Style Name	Premium Wood
Style Number	C0194
Product Type	LVT
Size	7.72 in x 51.97 in

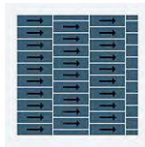
Feature	Description
Overall Thickness	2.5 mm
Wear Layer	20 mil (0.5 mm)
Finish	M-Force Ultra
Surface Profile	Overall Emboss
Squareness	ASTM F 2421 - Passes - $\pm 0.10$ " max
Flexibility	ASTM F137 - Passes - 1" mandrel
Square Foot per Carton	36.22
Pounds per Carton	30.42
Classification	ASTM F1700 - Class III, Type B - Embosse



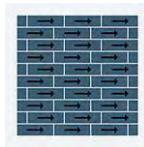
## Recommended Installation Methods



Monolithic



Monolithic Stepping



Half Lap



Random



Brick Ashlar



Herringbone

## Colorways



### Studio

Color code: 095  
Style number: C0194



### Shadow

Color code: 096  
Style number: C0194



### Western Woods

Color code: 123  
Style number: C0194



### Fawn

Color code: 210  
Style number: C0194



### Scone

Color code: 235  
Style number: C0194



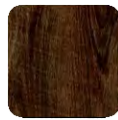
### Almond

Color code: 330  
Style number: C0194



### Cedar

Color code: 332  
Style number: C0194



### Brick

Color code: 358  
Style number: C0194



### Bisque Ware

Color code: 560  
Style number: C0194



### Tan Tone

Color code: 812  
Style number: C0194



### Sandy

Color code: 829  
Style number: C0194



### Beagle

Color code: 838  
Style number: C0194



### Cocoa

Color code: 889  
Style number: C0194



### Silver

Color code: 918  
Style number: C0194



### Bay Leaf

Color code: 939  
Style number: C0194



### Gorgeous Gray

Color code: 949  
Style number: C0194



### Two Tone

Color code: 958  
Style number: C0194



### Lead

Color code: 989  
Style number: C0194

## Performance

Feature	Description
Static Load	ASTM F970 - Passes, modified at 1000 psi
Dimensional Stability	ASTM F2199 - Passes - 0.020"/linear foot max
Residual Indentation	ASTM F1914 - Passes - Average less than 8% maximum single reading 10%
Resistance to Chemicals	ASTM F925 - Passes - No more than a slight change
Resistance to Heat	ASTM F1514 - Passes - ΔE <8
Resistance to Light	ASTM F1515 - Passes - ΔE <8
Critical Radiant Flux	ASTM E648 - Class 1 (>0.45 W/cm <sup>2</sup> )
Smoke Density	ASTM E662 Part A - Less than 450

## Sustainability

Feature	Description
Floor Score	Floor Score Certified
Certification Detail	Utilizes 100% closed-loop pre-consumer recycled content allocation
Country of Origin	USA
Environmental Product Declaration	EPD Vinyl Tile
Beyond Carbon Neutral	This product is 100% carbon neutral plus an additional 5% offset
Carbon Handprint	-0.03 kg CO2e/ft2
Embodied Carbon	0.6 kg CO2e/ft2



## Warranties

Limited 20 Year M-Force Ultra Commercial Warranty

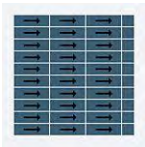
# Chromascope

Collection	Living Local
Style Name	Chromascope
Style Number	C0159
Product Type	LVT
Size	12 in x 24 in

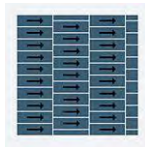
Feature	Description
Overall Thickness	2.5 mm
Wear Layer	20 mil (0.5 mm)
Finish	M-Force Ultra
Surface Profile	Overall Emboss
Squareness	ASTM F 2421 - Passes - ±0.10" max
Flexibility	ASTM F137 - Passes - 1" mandrel
Square Foot per Carton	36
Pounds per Carton	30.6
Classification	ASTM F1700 - Class III, Type B - Embosse



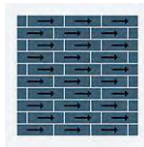
## Recommended Installation Methods



Monolithic



Monolithic Stepping



Half Lap



Random



Brick Ashlar



Herringbone

## Colorways



### Alabaster

Color code: 120  
Style number: C0159



### Summer Suede

Color code: 230  
Style number: C0159



### Dusty Trail

Color code: 250  
Style number: C0159



### Prairie Wind

Color code: 270  
Style number: C0159



### Yellow Bird

Color code: 360  
Style number: C0159



### Outrageous Orange

Color code: 440  
Style number: C0159



### Royal Ornate

Color code: 540  
Style number: C0159



### Firetruck Red

Color code: 550  
Style number: C0159



### Sporty Blue

Color code: 620  
Style number: C0159



### Patina Night

Color code: 650  
Style number: C0159



### Totally Teal

Color code: 672  
Style number: C0159



### Grass Green

Color code: 760  
Style number: C0159



### Lucky Green

Color code: 790  
Style number: C0159



### Cabin Fever

Color code: 860  
Style number: C0159



### Winter Mood

Color code: 910  
Style number: C0159



### Jack Rabbit

Color code: 940  
Style number: C0159



### Dire Wolf

Color code: 960  
Style number: C0159



### Winterfell

Color code: 980  
Style number: C0159

## Performance

Feature	Description
Static Load	ASTM F970 - Passes, modified at 1000 psi
Dimensional Stability	ASTM F2199 - Passes - 0.020"/linear foot max
Residual Indentation	ASTM F1914 - Passes - Average less than 8% maximum single reading 10%
Resistance to Chemicals	ASTM F925 - Passes - No more than a slight change
Resistance to Heat	ASTM F1514 - Passes - ΔE <8
Resistance to Light	ASTM F1515 - Passes - ΔE <8
Critical Radiant Flux	ASTM E648 - Class 1 (>0.45 W/cm <sup>2</sup> )
Smoke Density	ASTM E662 Part A - Less than 450

## Sustainability

Feature	Description
Floor Score	Floor Score Certified
Certification Detail	Utilizes 100% closed-loop pre-consumer recycled content allocation
Country of Origin	USA
Environmental Product Declaration	EPD Vinyl Tile
Beyond Carbon Neutral	This product is 100% carbon neutral plus an additional 5% offset
Carbon Handprint	-0.03 kg CO2e/ft2
Embodied Carbon	0.6 kg CO2e/ft2



## Warranties

Limited 20 Year M-Force Ultra Commercial Warranty

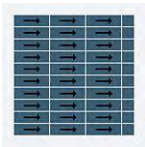
# Optic Hues

Collection	Living Local
Style Name	Optic Hues
Style Number	C0178
Product Type	LVT
Size	12 in x 24 in

Feature	Description
Overall Thickness	2.5 mm
Wear Layer	20 mil (0.5 mm)
Finish	M-Force Ultra
Surface Profile	Overall Emboss
Squareness	ASTM F 2421 - Passes - ±0.10" max
Flexibility	ASTM F137 - Passes - 1" mandrel
Square Foot per Carton	36
Pounds per Carton	30.6
Classification	ASTM F1700 - Class III, Type B - Embosse



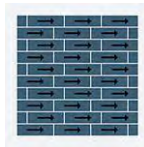
## Recommended Installation Methods



Monolithic



Monolithic Stepping



Half Lap



Random



Brick Ashlar



Herringbone

## Colorways



### Fresco

Color code: 415  
Style number: C0178



### Azul

Color code: 665  
Style number: C0178



### Indigo

Color code: 698  
Style number: C0178



### Verdigris

Color code: 759  
Style number: C0178



### Tea Tan

Color code: 810  
Style number: C0178



### Nuance

Color code: 820  
Style number: C0178



### Gravel

Color code: 932  
Style number: C0178



### Undertone

Color code: 938  
Style number: C0178



### Ferro

Color code: 961  
Style number: C0178



### Moonlit

Color code: 968  
Style number: C0178



### Charcoal

Color code: 995  
Style number: C0178



### Silhouette

Color code: 997  
Style number: C0178

## Performance

Feature	Description
Static Load	ASTM F970 - Passes, modified at 1000 psi
Dimensional Stability	ASTM F2199 - Passes - 0.020"/linear foot max
Residual Indentation	ASTM F1914 - Passes - Average less than 8% maximum single reading 10%
Resistance to Chemicals	ASTM F925 - Passes - No more than a slight change
Resistance to Heat	ASTM F1514 - Passes - ΔE <8
Resistance to Light	ASTM F1515 - Passes - ΔE <8
Critical Radiant Flux	ASTM E648 - Class 1 (>0.45 W/cm2)
Smoke Density	ASTM E662 Part A - Less than 450

## Sustainability

Feature	Description
Floor Score	Floor Score Certified
Certification Detail	Utilizes 100% closed-loop pre-consumer recycled content allocation
Country of Origin	USA
Environmental Product Declaration	EPD Vinyl Tile
Beyond Carbon Neutral	This product is 100% carbon neutral plus an additional 5% offset
Carbon Handprint	-0.03 kg CO2e/ft2
Embodied Carbon	0.6 kg CO2e/ft2



# Warranties

---

Limited 20 Year M-Force Ultra Commercial Warranty



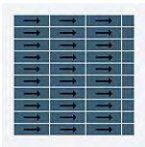
# Stonework

Collection	Living Local
Style Name	Stonework
Style Number	C0179
Product Type	LVT
Size	12 in x 24 in

Feature	Description
Overall Thickness	2.5 mm
Wear Layer	20 mil (0.5 mm)
Finish	M-Force Ultra
Surface Profile	Overall Emboss
Squareness	ASTM F 2421 - Passes - $\pm 0.10$ " max
Flexibility	ASTM F137 - Passes - 1" mandrel
Square Foot per Carton	36
Pounds per Carton	34.92
Classification	ASTM F1700 - Class III, Type B - Embosse



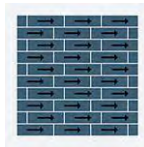
## Recommended Installation Methods



Monolithic



Monolithic Stepping



Half Lap



Random



Brick Ashlar



Herringbone

## Colorways



### Chiseled Edge

Color code: 225  
Style number: C0179



### Metamorphic

Color code: 250  
Style number: C0179



### Accessible Beige

Color code: 260  
Style number: C0179



### Tumbled Finish

Color code: 615  
Style number: C0179



### Warm Stone

Color code: 845  
Style number: C0179



### Antique Finish

Color code: 870  
Style number: C0179



### Roman Column

Color code: 909  
Style number: C0179



### Fleuri

Color code: 920  
Style number: C0179



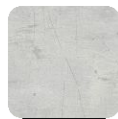
### Tinsmith

Color code: 925  
Style number: C0179



### Patina

Color code: 940  
Style number: C0179



### Silverplate

Color code: 945  
Style number: C0179



### Igneous

Color code: 950  
Style number: C0179



### Weathering

Color code: 960  
Style number: C0179



### Stamped Concrete

Color code: 985  
Style number: C0179



## Performance

Feature	Description
Static Load	ASTM F970 - Passes, modified at 1000 psi
Dimensional Stability	ASTM F2199 - Passes - 0.020"/linear foot max
Residual Indentation	ASTM F1914 - Passes - Average less than 8% maximum single reading 10%
Resistance to Chemicals	ASTM F925 - Passes - No more than a slight change
Resistance to Heat	ASTM F1514 - Passes - ΔE <8
Resistance to Light	ASTM F1515 - Passes - ΔE <8
Critical Radiant Flux	ASTM E648 - Class 1 (>0.45 W/cm <sup>2</sup> )
Smoke Density	ASTM E662 Part A - Less than 450

## Sustainability

Feature	Description
Floor Score	Floor Score Certified
Certification Detail	Utilizes 100% closed-loop pre-consumer recycled content allocation
Country of Origin	USA
Mindful Materials	Participates in Mindful Materials Library
Environmental Product Declaration	EPD Vinyl Tile
Beyond Carbon Neutral	This product is 100% carbon neutral plus an additional 5% offset
Carbon Handprint	-0.03 kg CO2e/ft2
Embodied Carbon	0.6 kg CO2e/ft2



## Warranties

Limited 20 Year M-Force Ultra Commercial Warranty

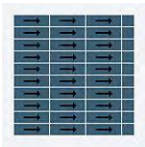
# Terrazzo

Collection	Living Local
Style Name	Terrazzo
Style Number	C0180
Product Type	LVT
Size	12 in x 24 in

Feature	Description
Overall Thickness	2.5 mm
Wear Layer	20 mil (0.5 mm)
Finish	M-Force Ultra
Surface Profile	Overall Emboss
Squareness	ASTM F 2421 - Passes - ±0.10" max
Flexibility	ASTM F137 - Passes - 1" mandrel
Square Foot per Carton	36
Pounds per Carton	30.6
Classification	ASTM F1700 - Class III, Type B - Embosse



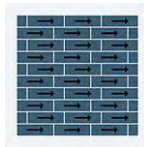
## Recommended Installation Methods



Monolithic



Monolithic Stepping



Half Lap



Random



Brick Ashlar



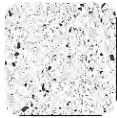
Herringbone

## Colorways



### Mascali

Color code: 585  
Style number: C0180



### Randazzo

Color code: 725  
Style number: C0180



### Strabe

Color code: 736  
Style number: C0180



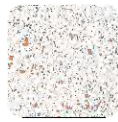
### Linosa

Color code: 939  
Style number: C0180



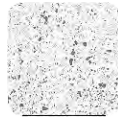
### Lahar

Color code: 986  
Style number: C0180



### Mercato

Color code: 722  
Style number: C0180



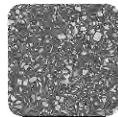
### Messina

Color code: 726  
Style number: C0180



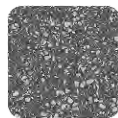
### Catania

Color code: 826  
Style number: C0180



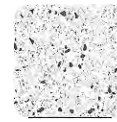
### Basal

Color code: 982  
Style number: C0180



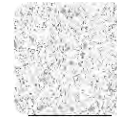
### Valle De Bove

Color code: 989  
Style number: C0180



### Vesuvius

Color code: 723  
Style number: C0180



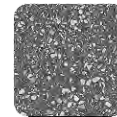
### Tephra

Color code: 727  
Style number: C0180



### Mongibello

Color code: 848  
Style number: C0180



### Somma

Color code: 985  
Style number: C0180

## Performance

Feature	Description
Static Load	ASTM F970 - Passes, modified at 1000 psi
Dimensional Stability	ASTM F2199 - Passes - 0.020"/linear foot max
Residual Indentation	ASTM F1914 - Passes - Average less than 8% maximum single reading 10%
Resistance to Chemicals	ASTM F925 - Passes - No more than a slight change
Resistance to Heat	ASTM F1514 - Passes - ΔE <8
Resistance to Light	ASTM F1515 - Passes - ΔE <8
Critical Radiant Flux	ASTM E648 - Class 1 (>0.45 W/cm <sup>2</sup> )
Smoke Density	ASTM E662 Part A - Less than 450

## Sustainability

Feature	Description
Floor Score	Floor Score Certified
Certification Detail	Utilizes 100% closed-loop pre-consumer recycled content allocation
Country of Origin	USA
Environmental Product Declaration	EPD Vinyl Tile
Beyond Carbon Neutral	This product is 100% carbon neutral plus an additional 5% offset
Carbon Handprint	-0.03 kg CO <sub>2</sub> e/ft <sup>2</sup>
Embodied Carbon	0.6 kg CO <sub>2</sub> e/ft <sup>2</sup>



## Warranties

Limited 20 Year M-Force Ultra Commercial Warranty