



PORTMANTEAU COLLECTION

Travel with your eyes wide open and your senses turned on.

Decoration and ornamentation are hardly trivial. They evoke memories, lift the spirits and, on occasion, take our breath away. How is it that the best of these are always reassuringly familiar, yet somehow surprisingly new?

At the center of the Portmanteau Collection are six patterns in a shamefully luscious construction. To help you carry the theme throughout the entire hotel, we have created two companions for each of the six patterns - incrementally diffusing the texture, so transitions can move slowly across the floor or abruptly for dramatic effect. And finally a texture, shared by all, like a loosely woven textile that beautifully offsets the graphic quality of the other patterns. And every bit of it is sink-your-toes-in depth. Don't mind if I do, Portmanteau.



COVER & PAGE 3

PRODUCT: PM01™ and PM39™
SIZE: 25cm x 1m and 50cm x 1m
COLOR: 104826 and 104756

A

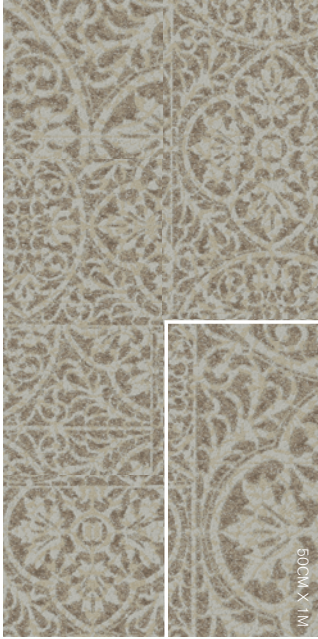
PRODUCT: PM49™
SIZE: 50cm x 1m
COLOR: 104769
INSTALLATION: Ashlar



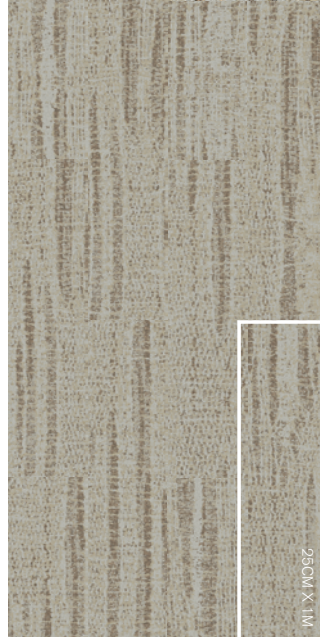


Collection
PORTMANTEAU

PRODUCTS



PM49
ASHLAR



PM01
ASHLAR



PM47™
ASHLAR



PM48™
ASHLAR

Individual Yarn Placement





A
PRODUCT: PW49
SIZE: 50cm x 1m
COLOR: 104769
INSTALLATION: Ashlar

B
PRODUCT: PW01
SIZE: 25cm x 1m
COLOR: 104829
INSTALLATION: Ashlar

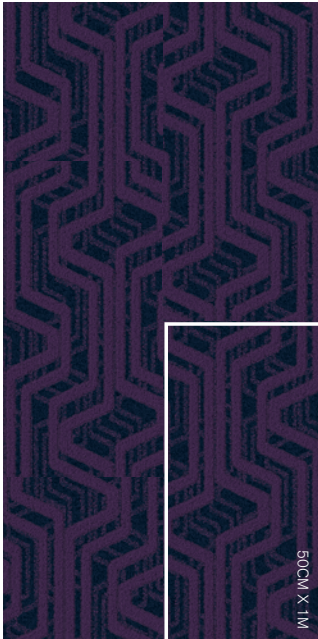


A
PRODUCT: PM19
SIZE: 50cm x 1m
COLOR: 2791-03
INSTALLATION: Ashlar

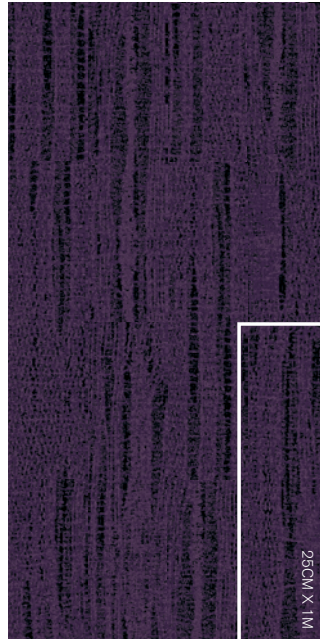
A

Collection
PORTMANTEAU

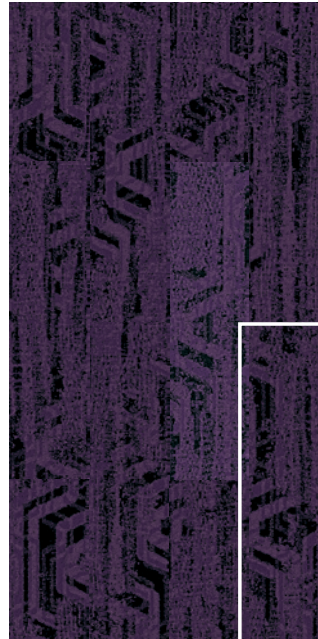
PRODUCTS



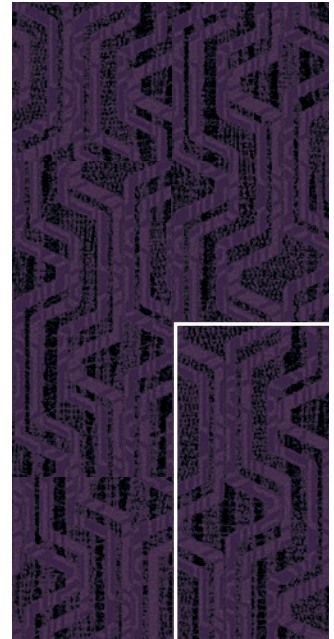
PM19™
ASHLAR



PM01
ASHLAR



PM17™
ASHLAR



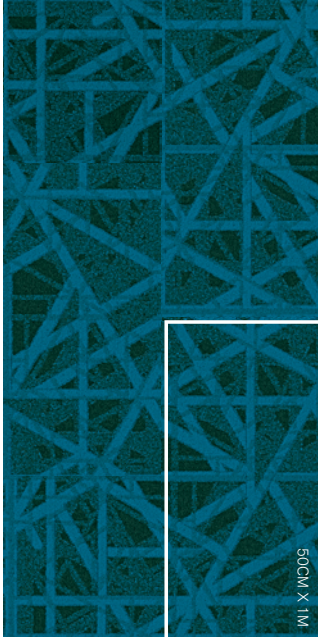
PM18™
ASHLAR

Individual Yarn Placement

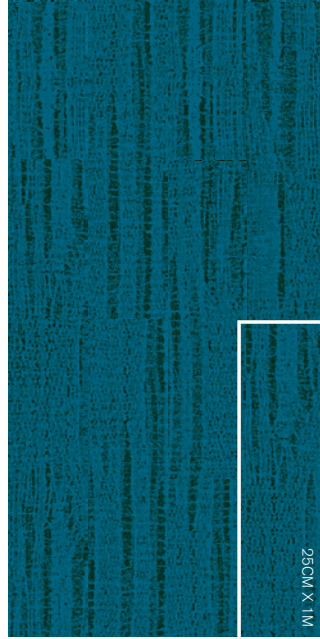


Collection
PORTMANTEAU

PRODUCTS



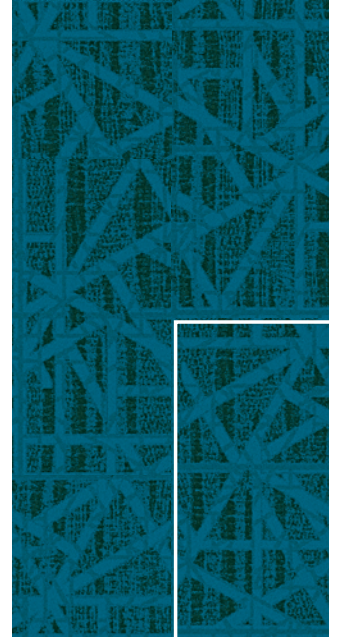
PM59™
ASHLAR



PM01
ASHLAR



PM57™
ASHLAR



PM58™
ASHLAR

Individual Yarn Placement





A

A
PRODUCT: PM59
SIZE: 50cm x 1m
COLOR: 104787
INSTALLATION: Ashlar

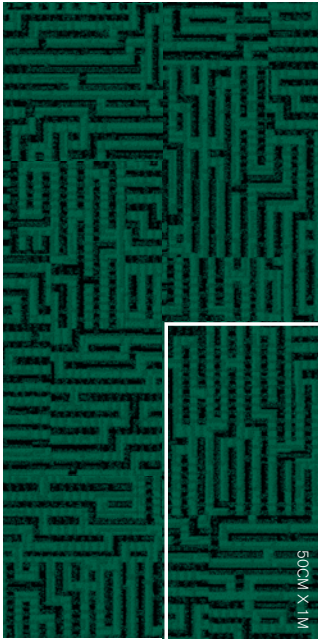
A
PRODUCT: PM29
SIZE: 50cm x 1m
COLOR: 2759-02
INSTALLATION: Ashlar



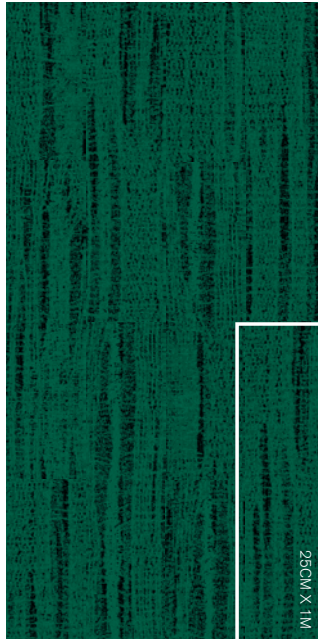
A

Collection
PORTMANTEAU

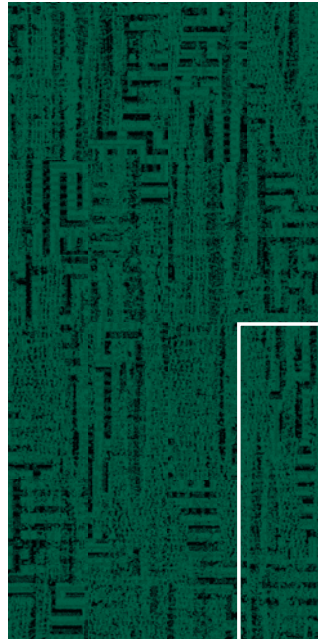
PRODUCTS



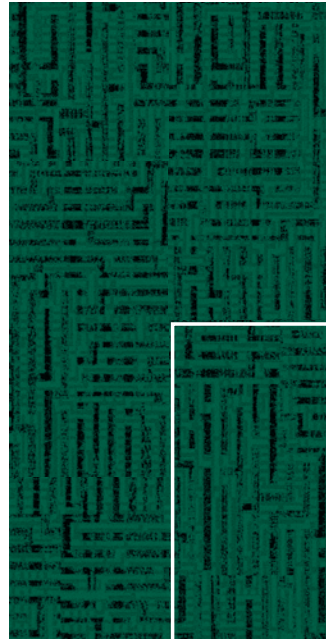
PM29™
ASHLAR



PM01
ASHLAR



PM27™
ASHLAR



PM28™
ASHLAR

Individual Yarn Placement

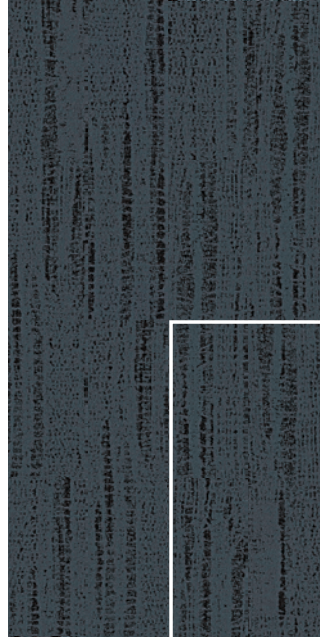


Collection
PORTMANTEAU

PRODUCTS



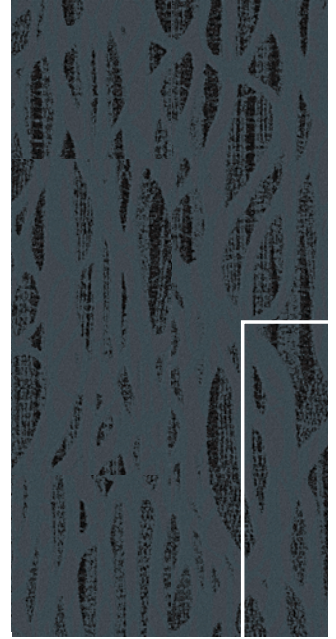
PM69™
ASHLAR



PM01
ASHLAR



PM67™
ASHLAR



PM68™
ASHLAR

Individual Yarn Placement





A
PRODUCT: PM68
SIZE: 50cm x 1m
COLOR: 105109
INSTALLATION: Ashlar

B
PRODUCT: PM67
SIZE: 25cm x 1m
COLOR: 105169
INSTALLATION: Ashlar

C
PRODUCT: PM01
SIZE: 25cm x 1m
COLOR: 104828
INSTALLATION: Ashlar

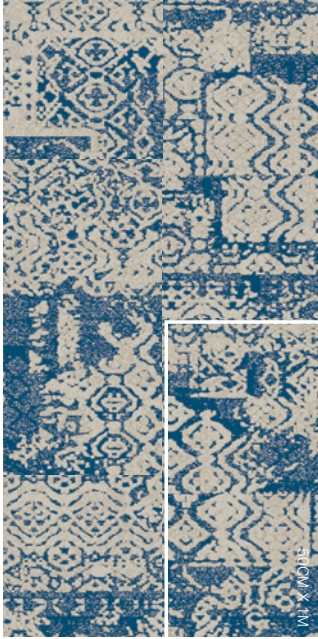
C

B

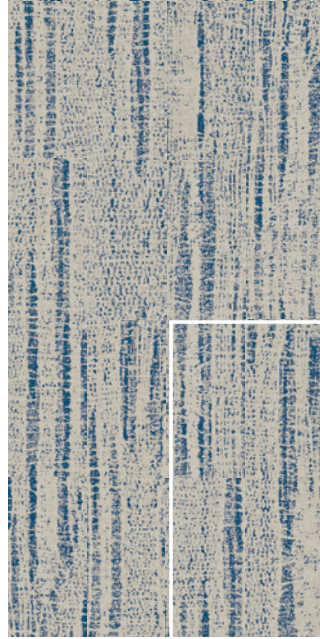
A

Collection
PORTMANTEAU

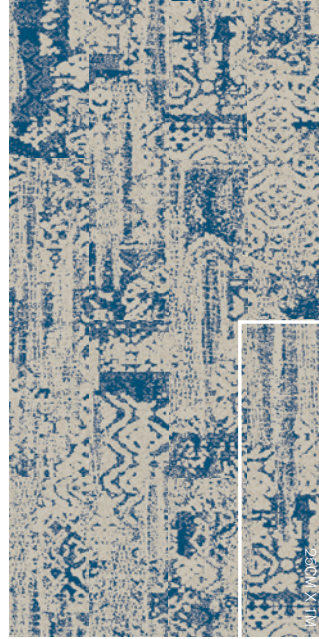
PRODUCTS



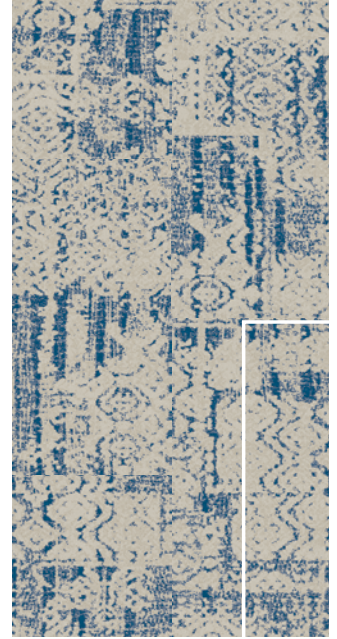
PM39™
ASHLAR



PM01
ASHLAR



PM37™
ASHLAR



PM38™
ASHLAR

Individual Yarn Placement





A
PRODUCT: PM38
SIZE: 50cm x 1m
COLOR: 105077
INSTALLATION: Ashlar

B
PRODUCT: PM37
SIZE: 25cm x 1m
COLOR: 105137
INSTALLATION: Ashlar

C
PRODUCT: PM01
SIZE: 50cm x 1m
COLOR: 104826
INSTALLATION: Ashlar

A
PRODUCT: PM38
SIZE: 50cm x 1m
COLOR: 105077
INSTALLATION: Ashlar

B
PRODUCT: PM37
SIZE: 25cm x 1m
COLOR: 105137
INSTALLATION: Ashlar

C
PRODUCT: PM01
SIZE: 1m x 50cm
COLOR: 104826
INSTALLATION: Ashlar







PM19 PM29

PRODUCT SPECIFICATIONS

PM19: 127910AB00, **PM29:** 127890AB00,
PM39: 127870AB00 **PM49:** 127880AB00,
PM59: 127900AB00 **PM69:** 127920AB00
 Style: Numbers Above (50cm x 1m)

Backing System
 GlasBac® Tile

Yarn System
 100% Recycled Content Type 6 Nylon

Yarn Manufacturer
 Aquafil

Color System
 100% Solution Dyed

Construction
 Tufted Sheared

Lifetime Antimicrobial
 Intersept®

Soil / Stain Protection
 Protekt^{2®}

Pile Thickness
 0.158 in., 4.0 mm

Pile Density
 7,291

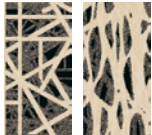
Total Recycled Content
 66%

Installation
 Ashlar, Herringbone

CRI Green Label Plus
 GLP0820



PM39 PM49



PM59 PM69



PM18 PM28

PRODUCT SPECIFICATIONS

PM18: 128090AB00, **PM28:** 128070AB00,
PM38: 128080AB00, **PM48:** 128090AB00
PM58: 128100AB00, **PM68:** 128110AB00
 Style: Numbers Above (50 cm x 1m)

Backing System
 GlasBac® Tile

Yarn System
 100% Recycled Content Type 6 Nylon

Yarn Manufacturer
 Aquafil

Color System
 100% Solution Dyed

Construction
 Tufted Sheared

Lifetime Antimicrobial
 Intersept®

Soil / Stain Protection
 Protekt^{2®}

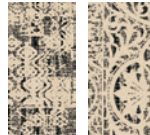
Pile Thickness
 0.133 in., 3.4 mm

Pile Density
 8,120

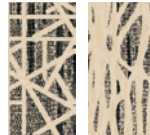
Total Recycled Content
 65%

Installation
 Ashlar, Herringbone

CRI Green Label Plus
 GLP0820



PM38 PM48



PM58 PM68



PM17 PM27

PRODUCT SPECIFICATIONS

PM17: 128120AK00, **PM27:** 128130AK00,
PM37: 128140AK00, **PM47:** 128150AK00,
PM57: 128160AK00, **PM67:** 128170AK00
 Style: Numbers Above (25cm x 1m)

Backing System
 GlasBac® Tile

Yarn System
 100% Recycled Content Type 6 Nylon

Yarn Manufacturer
 Aquafil

Color System
 100% Solution Dyed

Construction
 Tufted Sheared

Lifetime Antimicrobial
 Intersept®

Soil / Stain Protection
 Protekt^{2®}

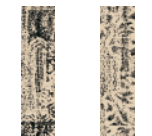
Pile Thickness
 0.120 in., 3.0 mm

Pile Density
 9,000

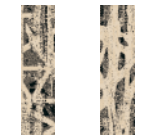
Total Recycled Content
 65%

Installation
 Ashlar, Herringbone

CRI Green Label Plus
 GLP0820



PM37 PM47



PM57 PM67



PM01

PRODUCT SPECIFICATIONS

PM01
 Style: 127940AK00 (25cm x 1m)

Backing System
 GlasBac® Tile

Yarn System
 100% Recycled Content Type 6 Nylon

Yarn Manufacturer
 Aquafil

Color System
 100% Solution Dyed

Construction
 Tufted Sheared

Lifetime Antimicrobial
 Intersept®

Soil / Stain Protection
 Protekt^{2®}

Pile Thickness
 0.152 in., 3.9 mm

Pile Density
 6,632

Total Recycled Content
 65%

Installation
 Ashlar, Herringbone

CRI Green Label Plus
 GLP0820



A
PRODUCT: PM19
SIZE: 50cm x 1m
COLOR: 104795
INSTALLATION: Ashlar

B
PRODUCT: PM01
SIZE: 25cm x 1m
COLOR: 104825
INSTALLATION: Ashlar

THE JOURNEY BEGINS HERE

Create a sensual experience for guests with a mix of pattern, texture and color that's uniquely yours.

- 

1. **Product PM19**
50cm x 1m

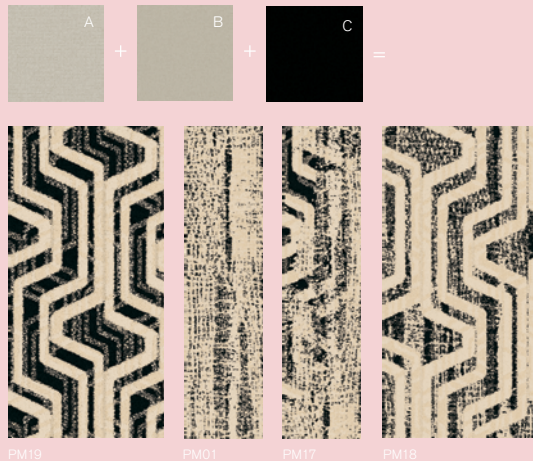
Product PM01
25cm x 1m

Product PM17
25cm x 1m

Product PM18
50cm x 1m

Select a single product or multiple transition products within the collection.

2. Working with your rep, select three different colors to find the perfect hues for your project. Portmanteau was designed using your lightest value colors in the A and B position. These two colors need to be very close in value. The C position is the darkest value to add visual depth to the product.



- 

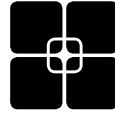
3. When you have colored the pattern, we can produce samples in your palette. Contact your rep for sample orders.

WHY MODULAR CARPET TILE?



Flexibility

Keep Your Floor Beautiful. Modular carpet tile allows you to play with pattern and design without having to special order carpet sizes. And the same flexibility that lets you create your floor helps you keep it looking good because in-house staff can easily replace individual tiles that become damaged or heavily soiled—no down time or outside contractors required.



TacTiles®

No Glue Installation. Installation or reconfiguration with our glue-free TacTiles installation system means there's no glue smell and no drying time. Guests can use the room as soon as the last piece is laid and all they'll notice is a beautiful floor.



Intersept®

Mold Protection. No matter what's spilled on the floor, our proprietary preservative, Intersept®, protects our modular carpet against the growth of odor-causing bacteria—guaranteed. With proper maintenance Intersept treated carpet safely and effectively inhibits the growth of mold and other bacteria so your floors are always fresh.



Less Waste

Save Money. Interface Hospitality's carpet tile averages just 3.9% installation waste compared to as much as 18% or more with patterned roll carpet. Use our non directional styles with an average of 1.5% waste and save even more. That means more of your flooring investment stays on the floor—not in a dumpster.



Sustainable Choice

Environmental Responsibility. Interface was the industry's first to earn an EPD (Environmental Product Declaration), which evaluates consistent factors based on full lifecycle assessment (LCA). In addition, all of our products with GlasBac®, GlasBacRE and NexStep® backings meet NSF/ANSI 140 Sustainable Assessment for Carpet.



InterComfort™

Comfort underfoot. Offer guests the additional comfort and acoustical benefits of a cushion underlay with InterComfort, Interface Hospitality's cushion that installs easily and prevents damage to your subfloor. InterComfort is available in two formats—InterComfort PS+ for public spaces and InterComfort GR for guest rooms.



Cool Carpet™

Our third party verified carbon offset program zeroes out all greenhouse gas (GHG) emissions associated with the entire lifecycle of your carpet.

Sustainable Assessment for Carpet

The only carpet sustainability standard in North America that evaluates the environmental impact of carpet for its entire lifecycle.

CRI Green Label Plus

An independent testing program that identifies carpet and adhesives with very low emissions of VOCs to help improve indoor air quality.

Environmental Product Declaration (EPD)

A statement of product ingredients and environmental impacts over the entire lifecycle of a product. A comprehensive life cycle assessment (LCA) is performed to ISO standards to develop an EPD, after which both the EPD and the LCA must be third party verified.



www.interfacehospitality.com

United States Headquarters

1503 Orchard Hill Road
LaGrange, GA 30240
1.800.336.0225 ext.6511

Canadian Headquarters

233 Lahr Drive
Belleville, ON K8N 5S2
1.800.267.2149 ext.2128

Mexican Headquarters

Montes Urales # 415 Piso 6
Col. Lomas de Chapultepec
México City, D.F. 11000
+ 52 55 6395 5100

Latin American Headquarters

Rua Surubim, 577 - Conjuntos
73/74 7º Andar
04571-050 - São Paulo - SP
Brazil
+ 55 11 2196 0900

11/2015
IFS00698

Interface Hospitality

