



DESIGN IS PERSPECTIVE



STANDING

on a city block, looking up at Bilbao, Spain. Immersed in angles new and old, a confluence of present and past unfold.

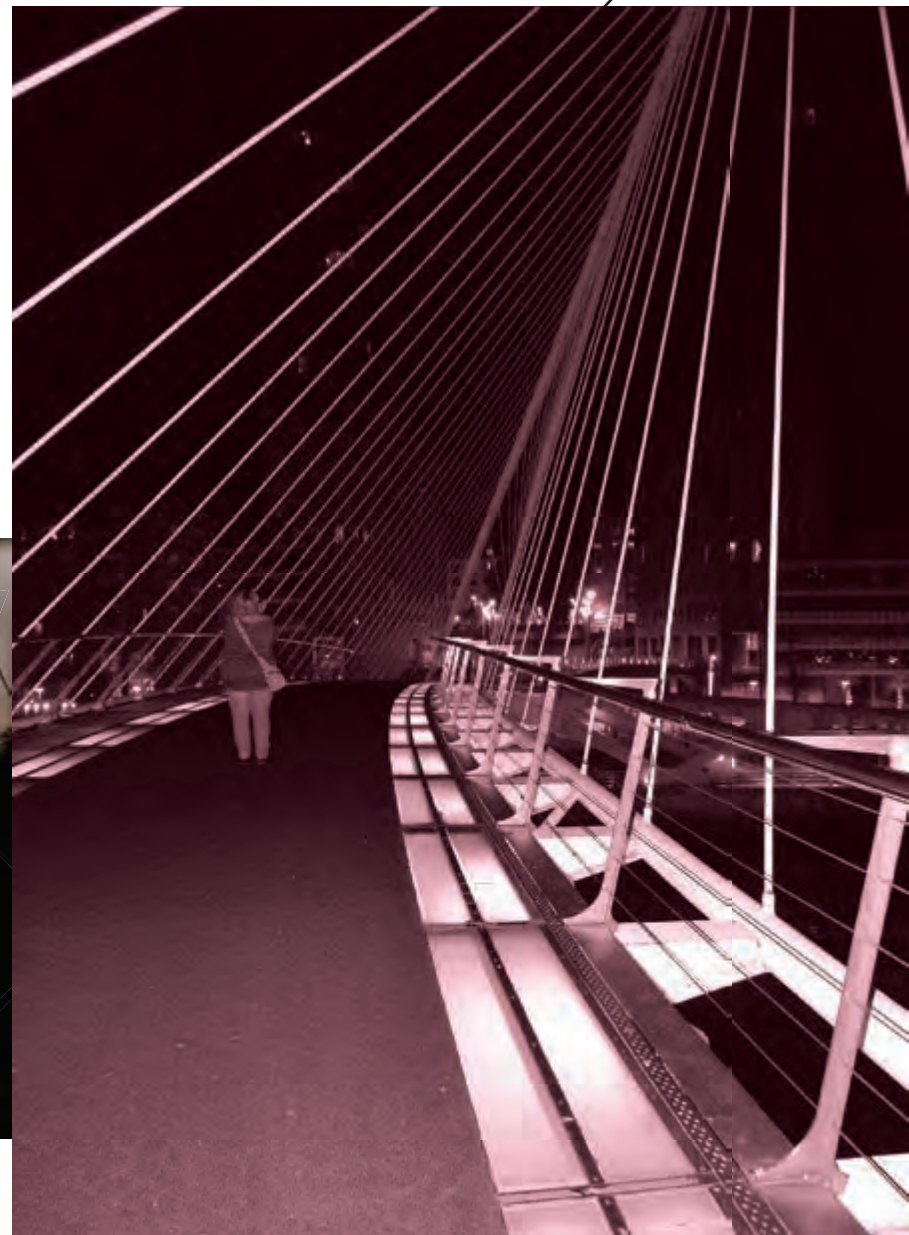
Layers of light and shadow disperse through the buildings, altering perspective. A vaulted cathedral reflects on the glass of an ultramodern facade, creating a character revival. Contradiction lives here, shaping its own architecture, its own sense of time. And place.



COMPOSITE

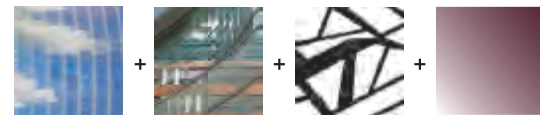
STRUCTURE STUDY

of depth, form and complexity



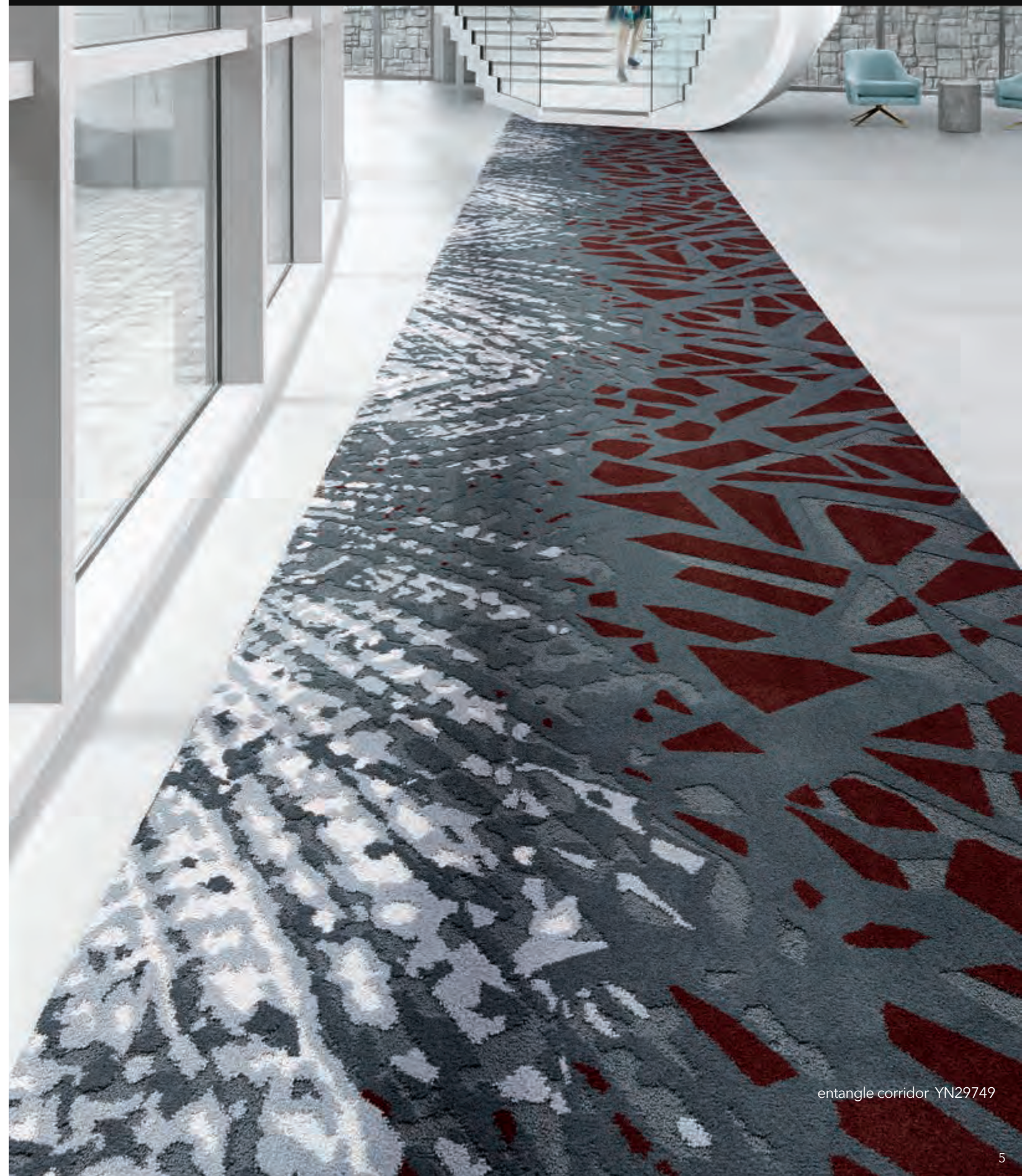
Our designers studied, sketched and photographed the buildings of Bilbao from different angles. An exploration of color, the palette was inspired by the rich velvet patina of the opera house juxtaposed with sleek steel and glass of the modern buildings. They accentuated shapes and layered these with photography to define the space in their own perspective. With a window light source, they experimented with acetate transparencies, layering and manipulating the sheets to form Composite.





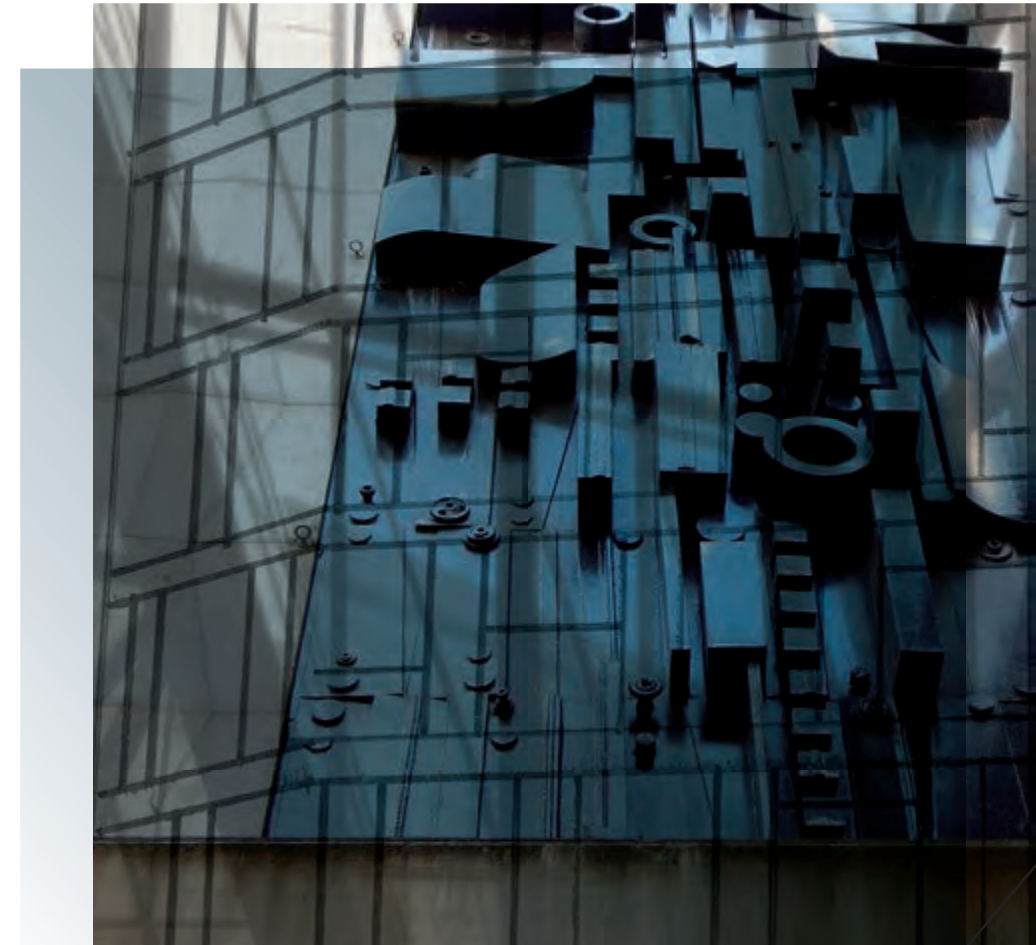
LIGHT TRAVELS

through the streets and across a courtyard. Shadows shift. Materials merge. Colors collide. In that decisive moment, **DESIGN IS PERSPECTIVE.**

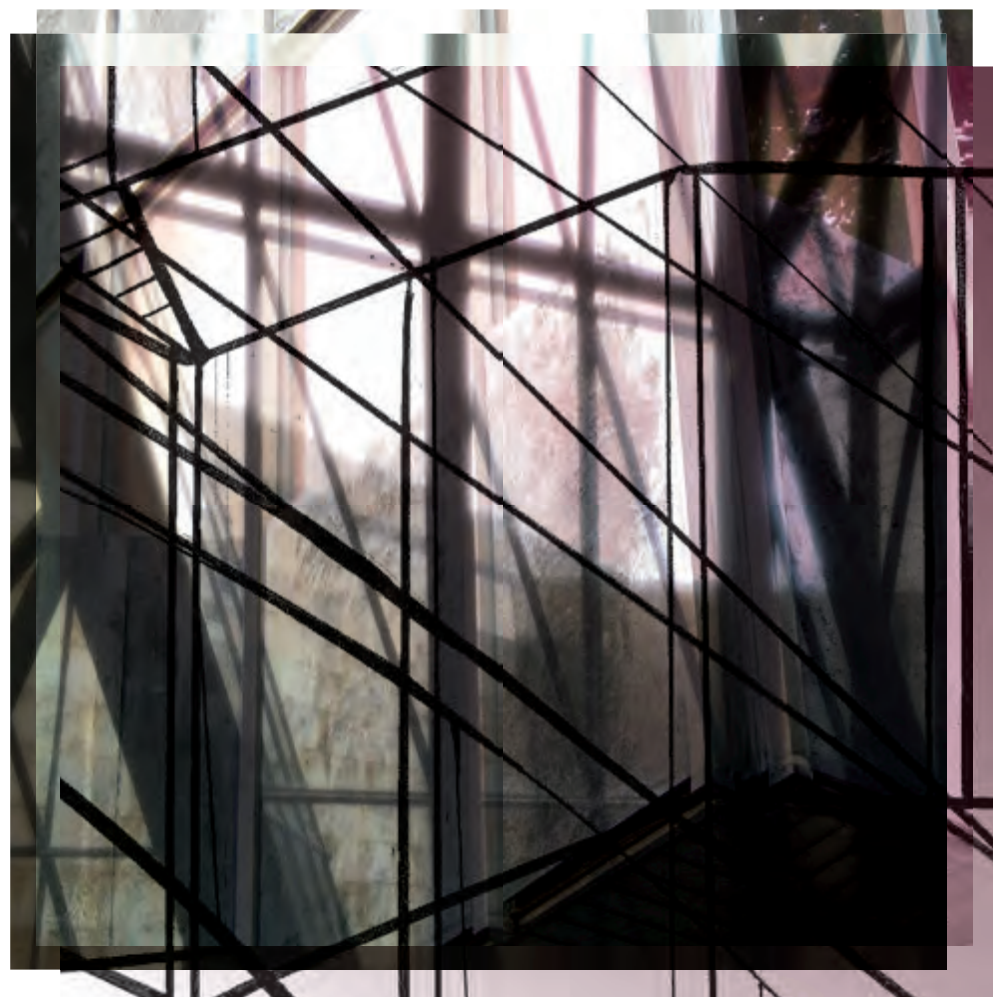




interwoven rug YR29748



INDUSTRIAL
EDGE rising like a gleaming skyscraper



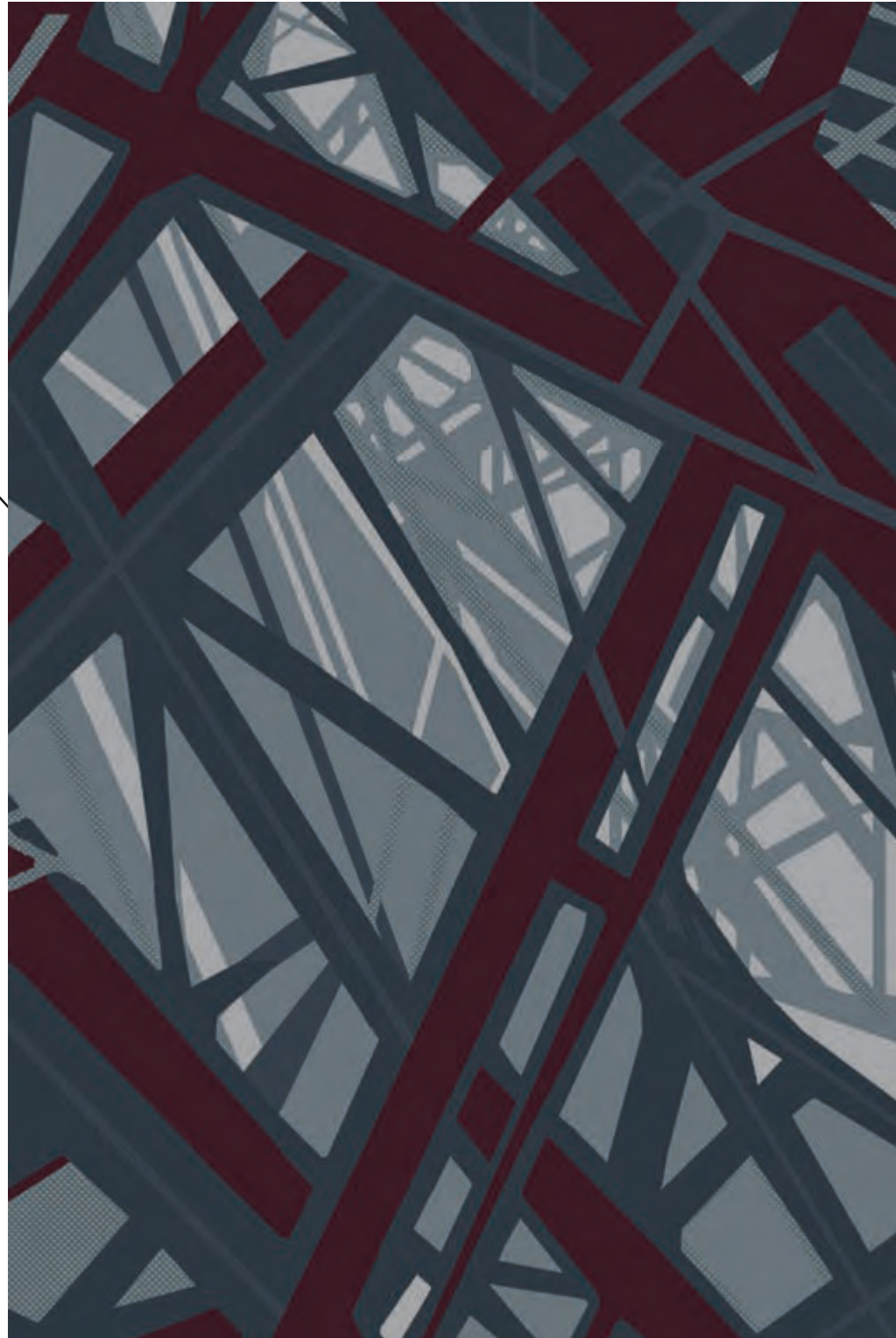
ASSEMBLED

lines exaggerate scale in open public spaces



superimpose corridor YN29734

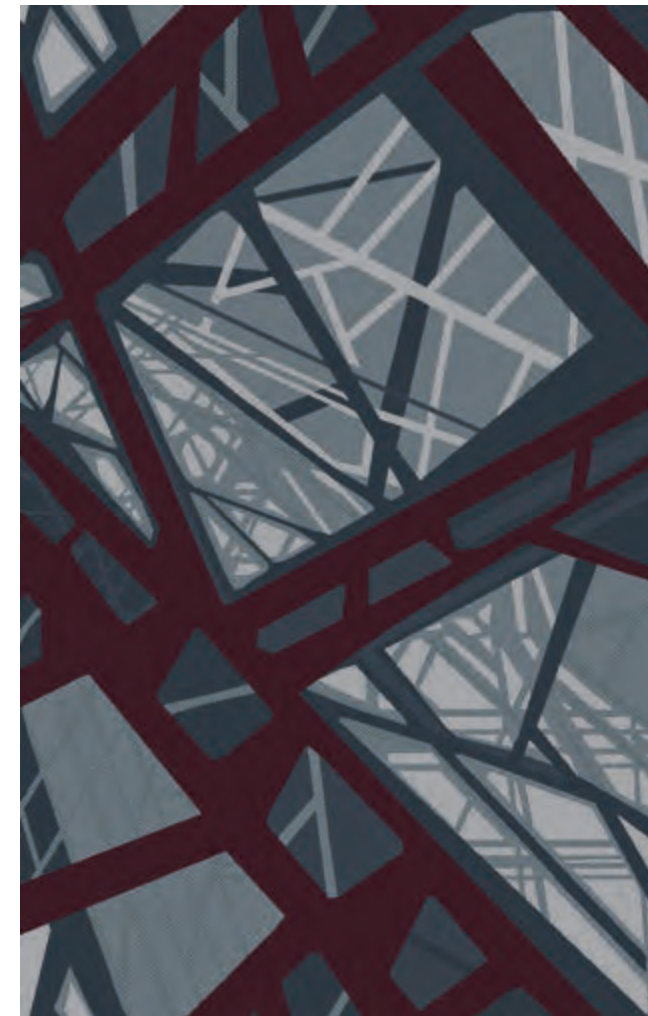
SUPERIMPOSE RUG
YR29736 | RUG | SIZE: 12' W x 18' L | 3.66 m x 5.49 m



| | | | | |
|-------|-------|-------|-------|-------|
| 1 | 2 | 3 | 4 | 5 |
| 5429D | 5365D | CH785 | 5236D | 5832D |
| LOOP | CUT | LOOP | CUT | LOOP |

SHADOWS STAY
and move across the lobby

SUPERIMPOSE CORRIDOR
YN29734 | CORRIDOR | REPEAT: 6' W x 9' 4.91" L | 1.83 m x 2.87 m



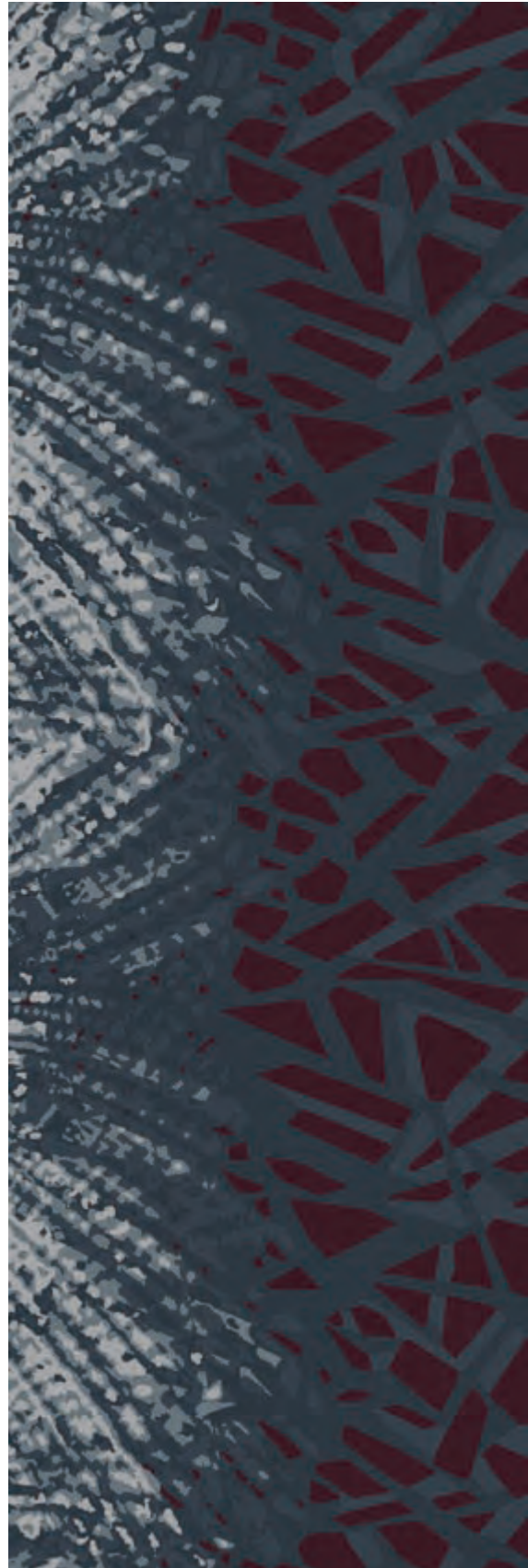
| | | | | |
|-------|-------|-------|-------|-------|
| 1 | 2 | 3 | 4 | 5 |
| 5429D | 5365D | CH785 | 5236D | 5832D |
| LOOP | CUT | LOOP | CUT | LOOP |

SUPERIMPOSE FIELD
YF29735 | FIELD | REPEAT: 6' W x 6' 2.91" L | 1.83 m x 1.9 m



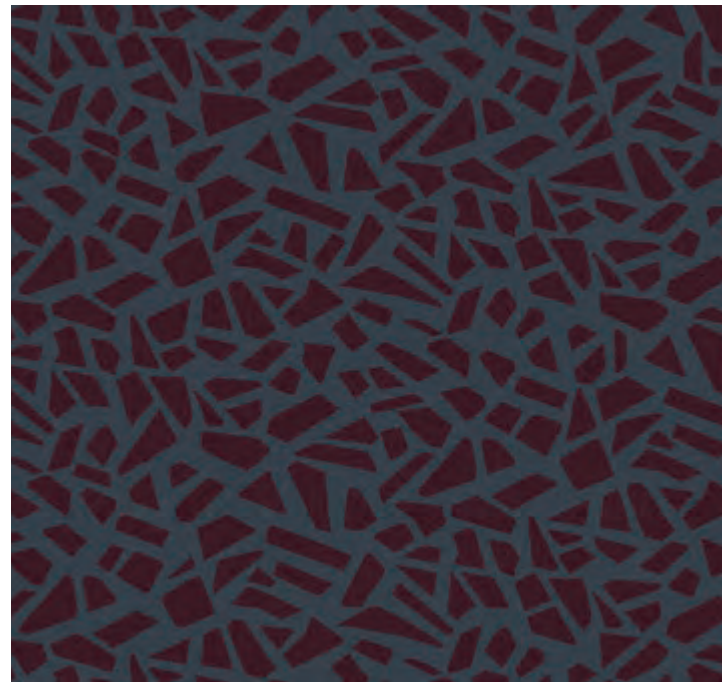
| | | | |
|-------|-------|-------|-------|
| 1 | 2 | 3 | 4 |
| 5429D | 5365D | CH785 | 5236D |
| LOOP | CUT | LOOP | CUT |

ENTANGLE CORRIDOR
YN29749 | CORRIDOR | REPEAT: 6' W x 18' 1.09" L | 1.83 m x 5.51 m



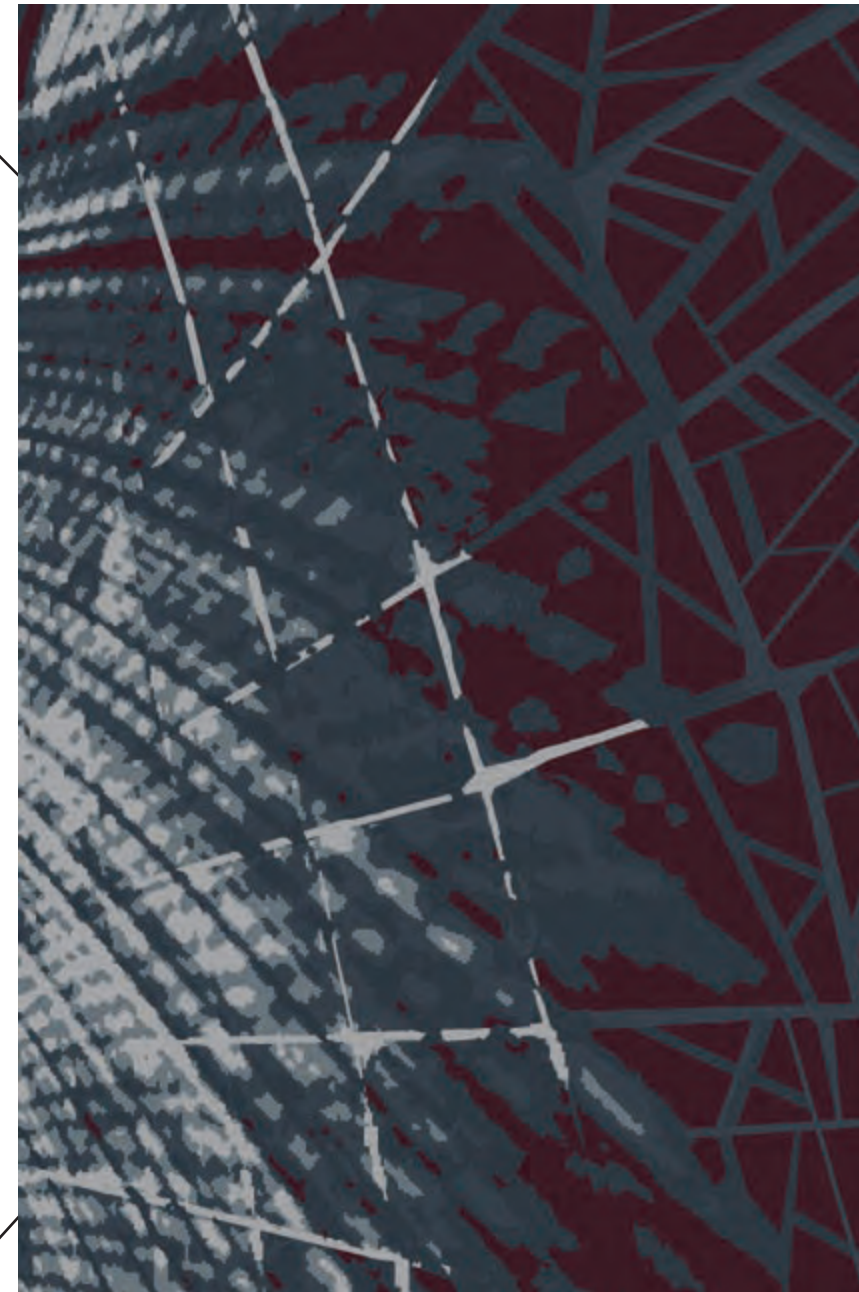
| | | | |
|-------|-------|-------------|-------|
| 1 | 2 | 3 | 4 |
| 5429D | 5365D | 5236D | 5832D |
| LOOP | CUT | CUT LOOP | CUT |

ENTANGLE FIELD
YF29751 | FIELD | REPEAT: 6' W x 5' 1.18" L | 1.83 m x 1.55 m

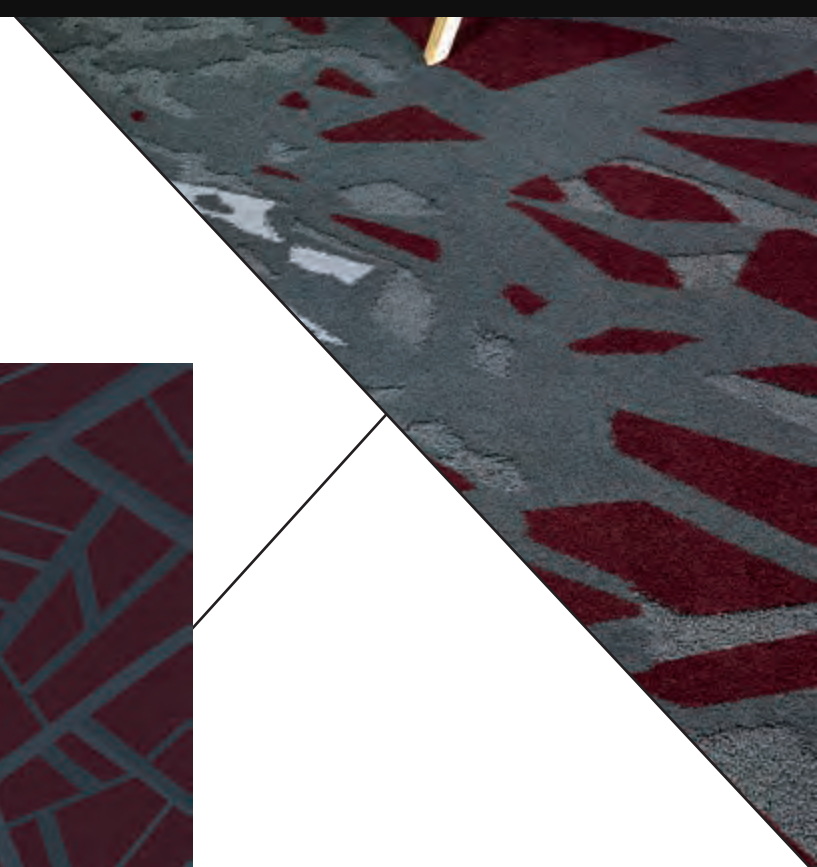


| | |
|-------|-------|
| 1 | 2 |
| 5236D | 5832D |
| LOOP | CUT |

ENTANGLE RUG
YR29752 | RUG | SIZE: 12' W x 18' L | 3.66 m x 5.49 m



| | | | |
|-------|-------|-------------|-------|
| 1 | 2 | 3 | 4 |
| 5429D | 5365D | 5236D | 5832D |
| LOOP | CUT | CUT LOOP | CUT |



BLENDED RUG
YR29737 | RUG | SIZE: 24' W x 38' 3.64" L | 7.31 m x 11.67 m



| | | | | |
|---------------|--------------|---------------|----------------------|--------------|
| 1 | 2 | 3 | 4 | 5 |
| 5429D LOOP | 5365D CUT | CH785 LOOP | 5236D CUT LOOP | 5832D CUT |

YN29738 | CORRIDOR | REPEAT: 6' W x 13' 7.64" L | 1.83 m x 4.16 m



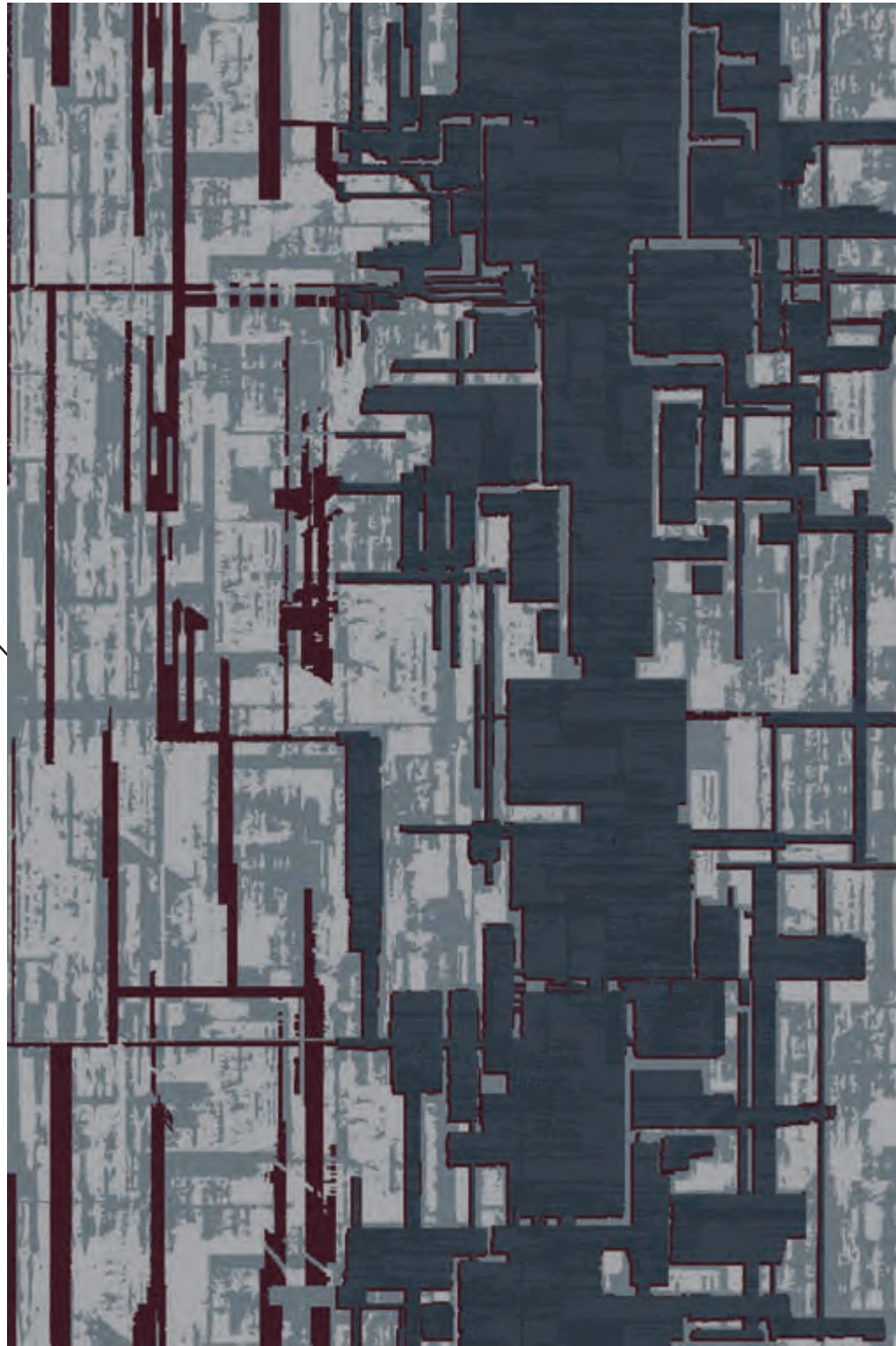
| | | | | |
|---------------|--------------|---------------|----------------------|--------------|
| 1 | 2 | 3 | 4 | 5 |
| 5429D LOOP | 5365D CUT | CH785 LOOP | 5236D CUT LOOP | 5832D CUT |

BLENDED FIELD
YF29739 | FIELD | REPEAT: 6' W x 7' 3.55" L | 1.83 m x 2.22 m



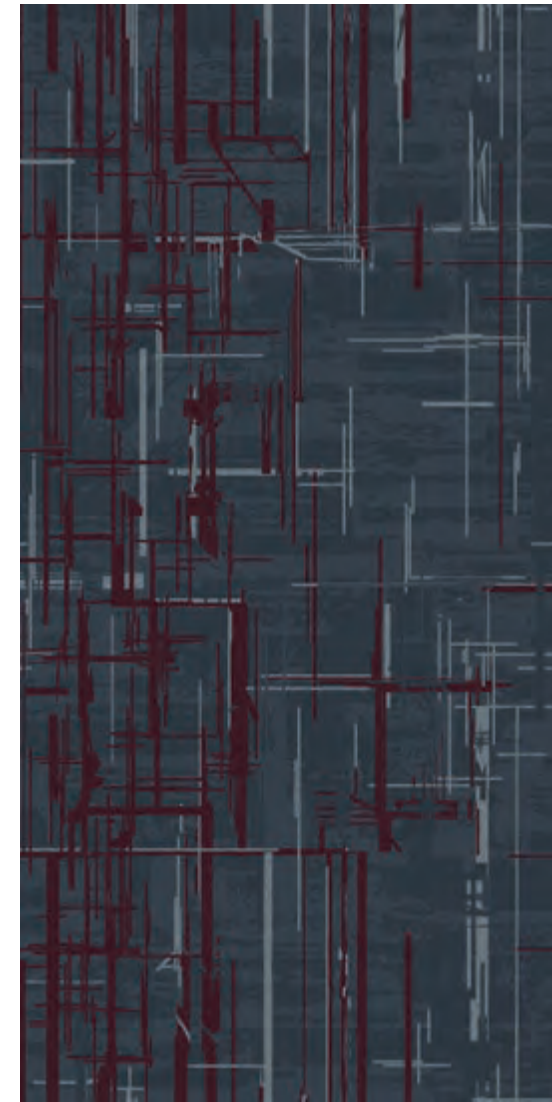
| | | | | |
|---------------|--------------|---------------|----------------------|--------------|
| 1 | 2 | 3 | 4 | 5 |
| 5429D LOOP | 5365D CUT | CH785 LOOP | 5236D CUT LOOP | 5832D CUT |

INTERWOVEN RUG
YR29748 | RUG | SIZE: 12' W x 18' L | 3.66 m x 5.49 m



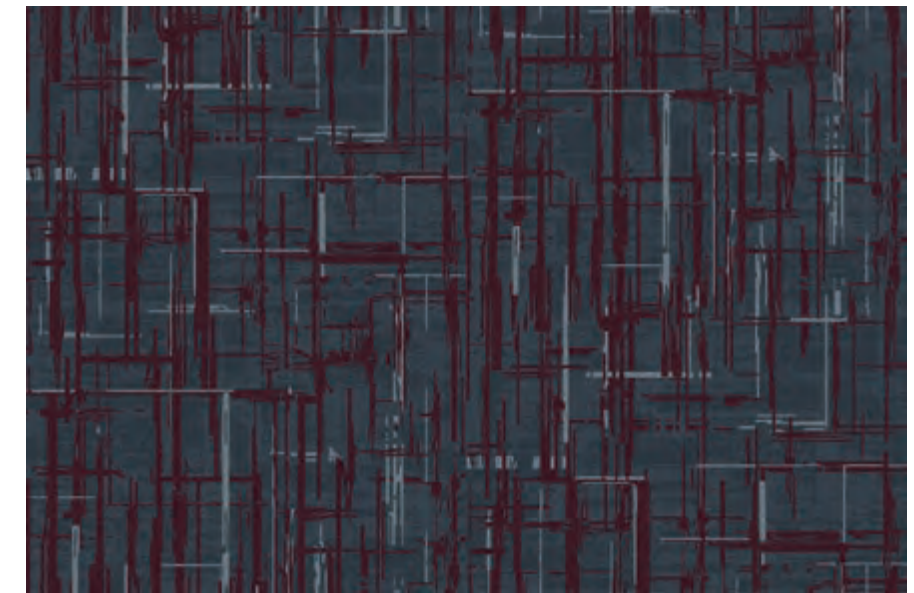
| | | | |
|-------|-------|-------------|-------|
| 1 | 2 | 3 | 4 |
| 5429D | 5365D | 5236D | 5832D |
| LOOP | CUT | CUT LOOP | CUT |

INTERWOVEN CORRIDOR
YN29746 | CORRIDOR | REPEAT: 6' W x 12' .55" L | 1.83 m x 3.67 m



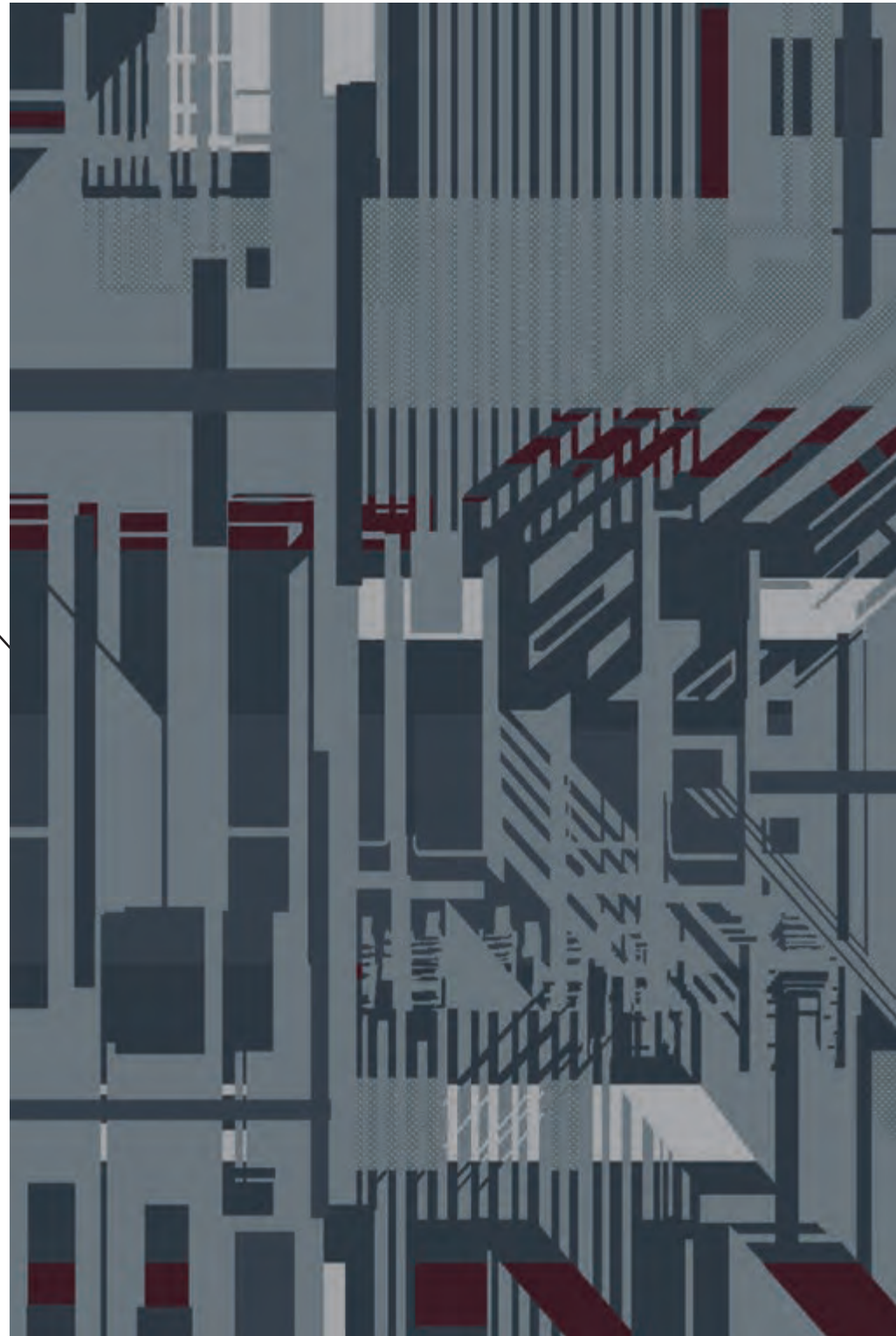
| | | |
|-------|-------------|-------|
| 1 | 2 | 3 |
| 5365D | 5236D | 5832D |
| CUT | CUT LOOP | CUT |

INTERWOVEN FIELD
YF29747 | FIELD | REPEAT: 12' W x 8' L | 3.66 m x 2.44 m



| | | |
|-------|-------------|-------|
| 1 | 2 | 3 |
| 5365D | 5236D | 5832D |
| CUT | CUT LOOP | CUT |

INFUSE RUG
YR29745 | RUG | SIZE: 12' W x 18' L | 3.66 m x 5.49 m

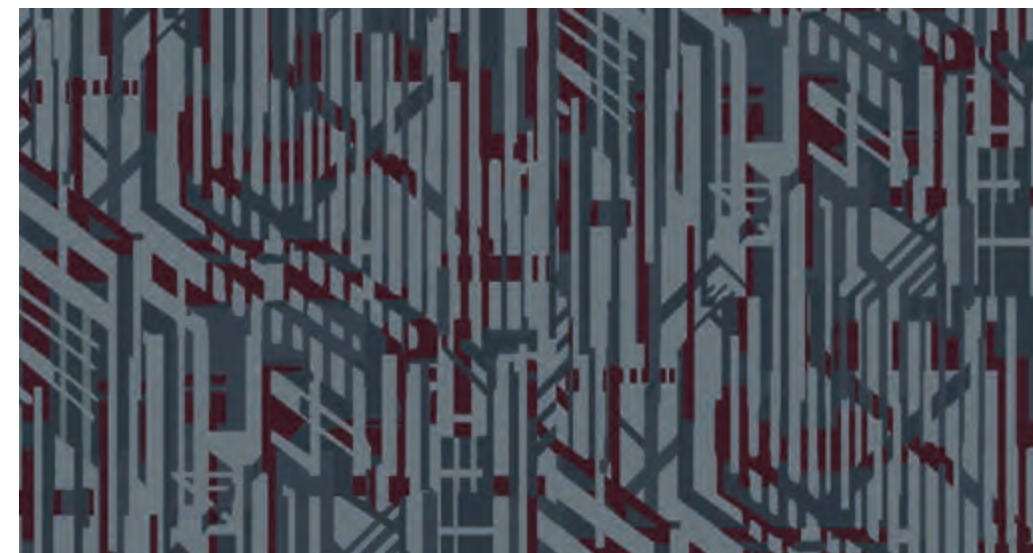


| | | | | |
|---------------|--------------|---------------|----------------------|--------------|
| 1 | 2 | 3 | 4 | 5 |
| 5429D LOOP | 5365D CUT | CH785 LOOP | 5236D CUT LOOP | 5832D CUT |



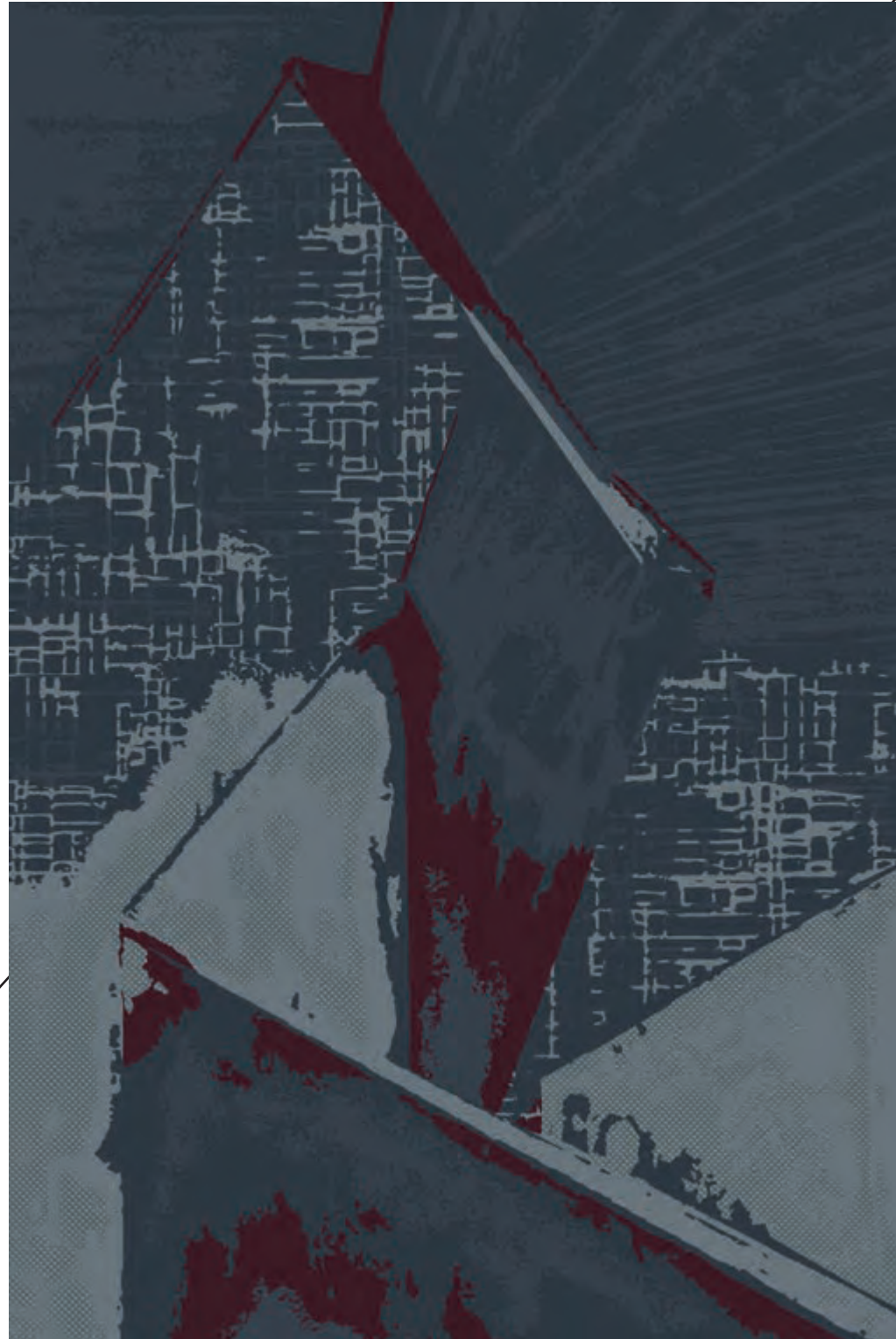
| | | | | |
|---------------|--------------|---------------|----------------------|--------------|
| 1 | 2 | 3 | 4 | 5 |
| 5429D LOOP | 5365D CUT | CH785 LOOP | 5236D CUT LOOP | 5832D CUT |

INFUSE FIELD
YF29744 | FIELD | REPEAT: 12' W x 6' 5.36" L | 3.66 m x 1.96 m



| | | | |
|--------------|---------------|----------------------|--------------|
| 1 | 2 | 3 | 4 |
| 5365D CUT | CH785 LOOP | 5236D CUT LOOP | 5832D CUT |

STRUCTURE RUG
YR29742 | RUG | SIZE: 12' W x 18' L | 3.66 m x 5.49 m



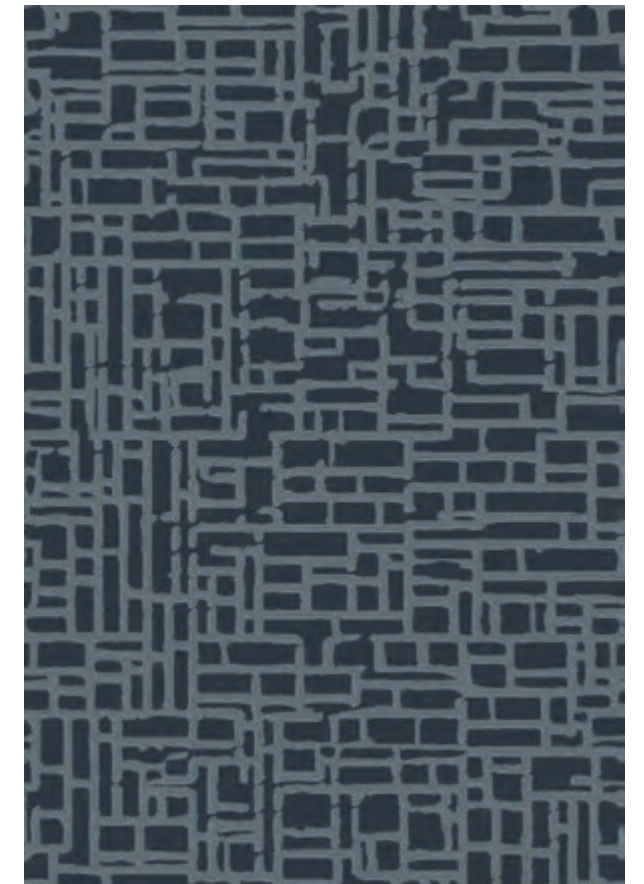
| | | | |
|--------------|---------------|----------------------|--------------|
| 1 | 2 | 3 | 4 |
| 5365D CUT | CH785 LOOP | 5236D CUT LOOP | 5832D CUT |

STRUCTURE CORRIDOR
YN29740 | CORRIDOR | REPEAT: 6' W x 12' 1.45" L | 1.83 m x 3.69 m



| | |
|--------------|----------------------|
| 1 | 2 |
| 5365D CUT | 5236D CUT LOOP |

STRUCTURE FIELD
YF29741 | FIELD | REPEAT: 6' W x 8' 9.91" L | 1.83 m x 2.69 m



| | | |
|--------------|---------------|--------------|
| 1 | 2 | 3 |
| 5365D CUT | CH785 LOOP | 5236D CUT |



IN
PRIVATE

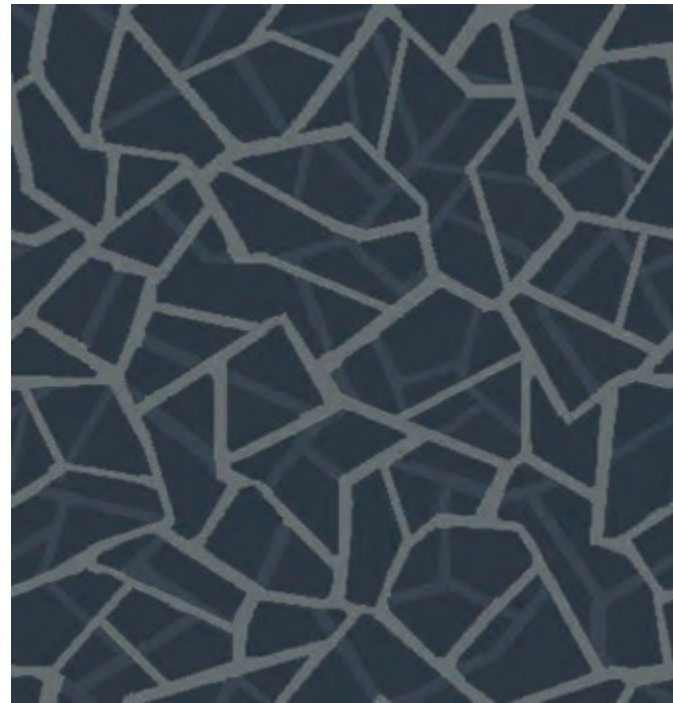
deliberately layered designs add
character to guest rooms and suites



SCALE THE FLOOR

in patterns that maximize room size

Y9339
FIELD | REPEAT: 3' W x 3' 1.5" L | .91 m x .95 m



| | |
|----------------------|---------------|
| A | B |
| 5236D CUT LOOP | 5510D LOOP |



| | |
|----------------------|---------------|
| A | B |
| 5236D CUT LOOP | 5510D LOOP |



| | |
|----------------------|---------------|
| A | B |
| 5236D CUT LOOP | 5510D LOOP |

Y9336
FIELD | REPEAT: 6' W x 3' 2.5" L | 1.83 m x .98 m



| | |
|----------------------|---------------|
| A | B |
| 5236D CUT LOOP | 5510D LOOP |

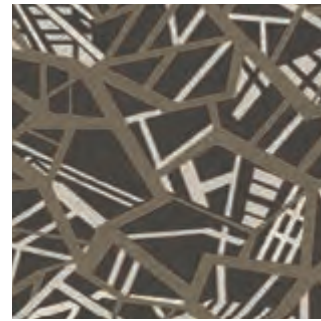
Y9337
FIELD | REPEAT: 4' W x 2' 9" L | 1.22 m x .85 m



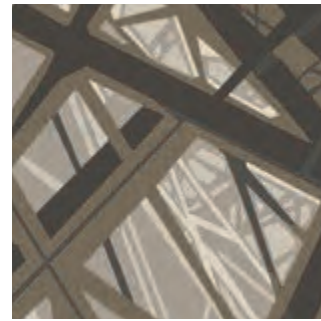
| | |
|----------------------|---------------|
| A | B |
| 5236D CUT LOOP | 5510D LOOP |

VAULTED

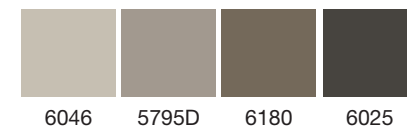
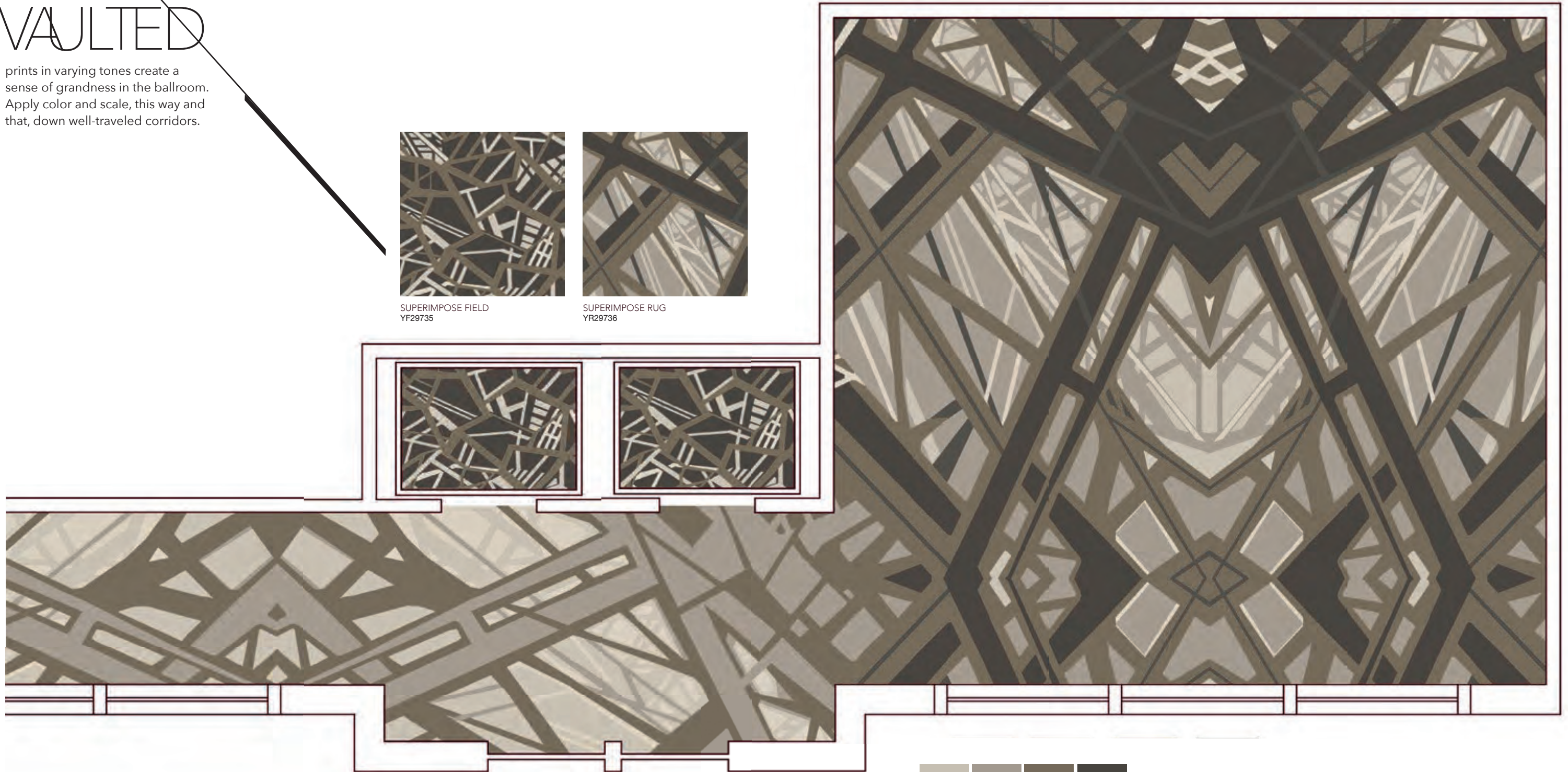
prints in varying tones create a sense of grandness in the ballroom. Apply color and scale, this way and that, down well-traveled corridors.



SUPERIMPOSE FIELD
YF29735



SUPERIMPOSE RUG
YR29736



CONSTRUCTED

and customized. Composite styles are designed to fit together, anyway you weave them.



INFUSE FIELD
YF29744



INTERWOVEN FIELD
YF29747



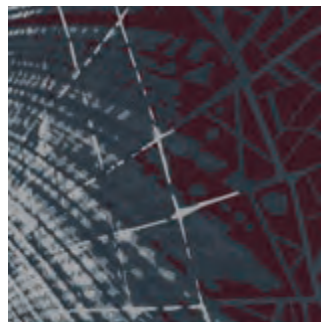
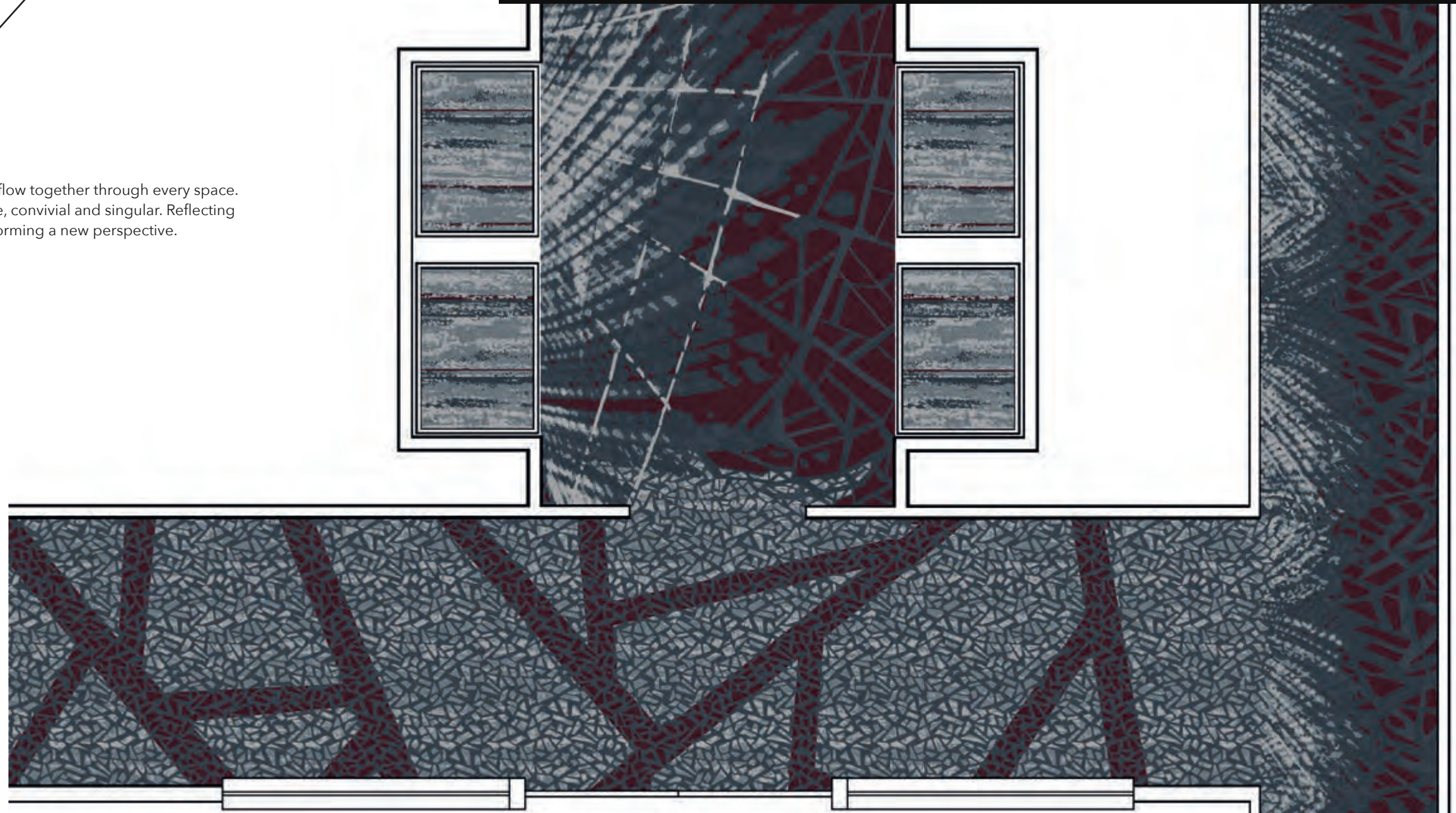
STRUCTURE FIELD
YF29741



6046 5795D 6180 6025

FULLY IMMERSED

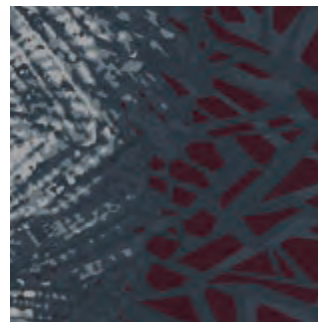
in pattern. Styles flow together through every space. Public and private, convivial and singular. Reflecting time and place, forming a new perspective.



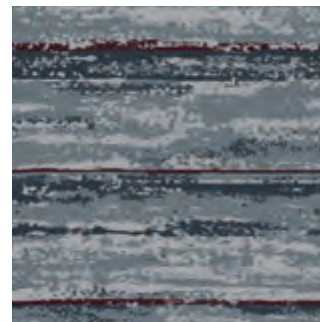
ENTANGLED RUG
YR29752



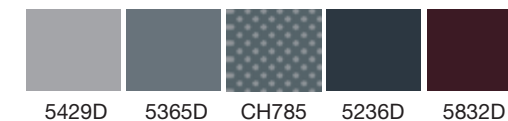
ENTANGLED FIELD
YF29751



ENTANGLED CORRIDOR
YN29749



BLENDED FIELD
YF29739



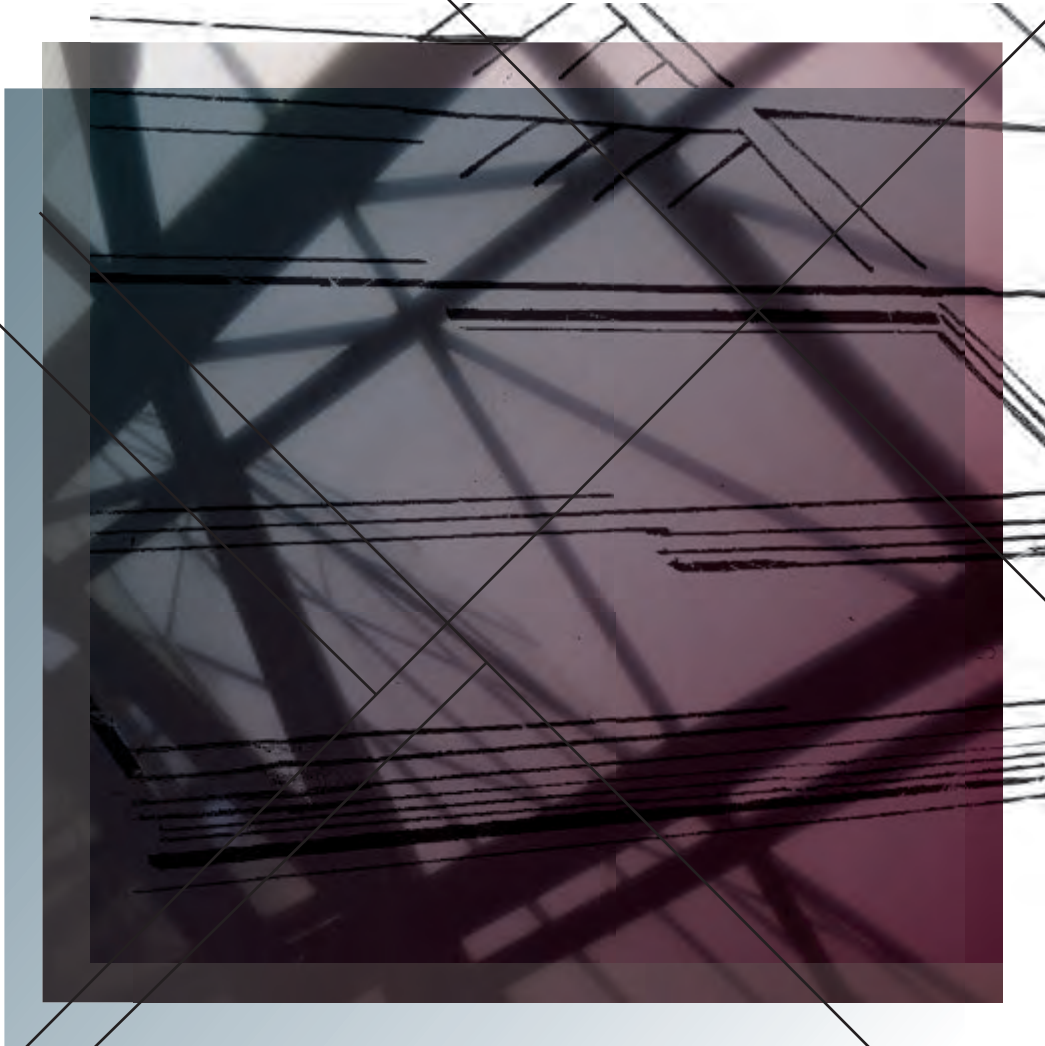
5429D 5365D CH785 5236D 5832D



EVER CHANGING

architecture styles with
curvilinear depths are
overlapped, reassembled
and revived.

FORM YOUR PERSPECTIVE



shaw hospitality group™

shawhospitalitygroup.com • 888-448-7878 • @shawhospitality