



SPIRIT MODERNE



MUSEUM OF INTERNATIONAL
FOLK ART

SPIRIT MODERNE

Spirit Moderne is a captivating soft surface portfolio for hospitality interiors inspired by Durkan's collaboration with the Museum of International Folk Art in Santa Fe, N.M. Alluring ethnographic textiles from the world over breathe inspiration into new motifs and bring historical source material into the context of the modern era. The rich history behind textured garments spanning ceremonial to everyday use is revived and infused with a contemporary aesthetic for a hospitality audience.

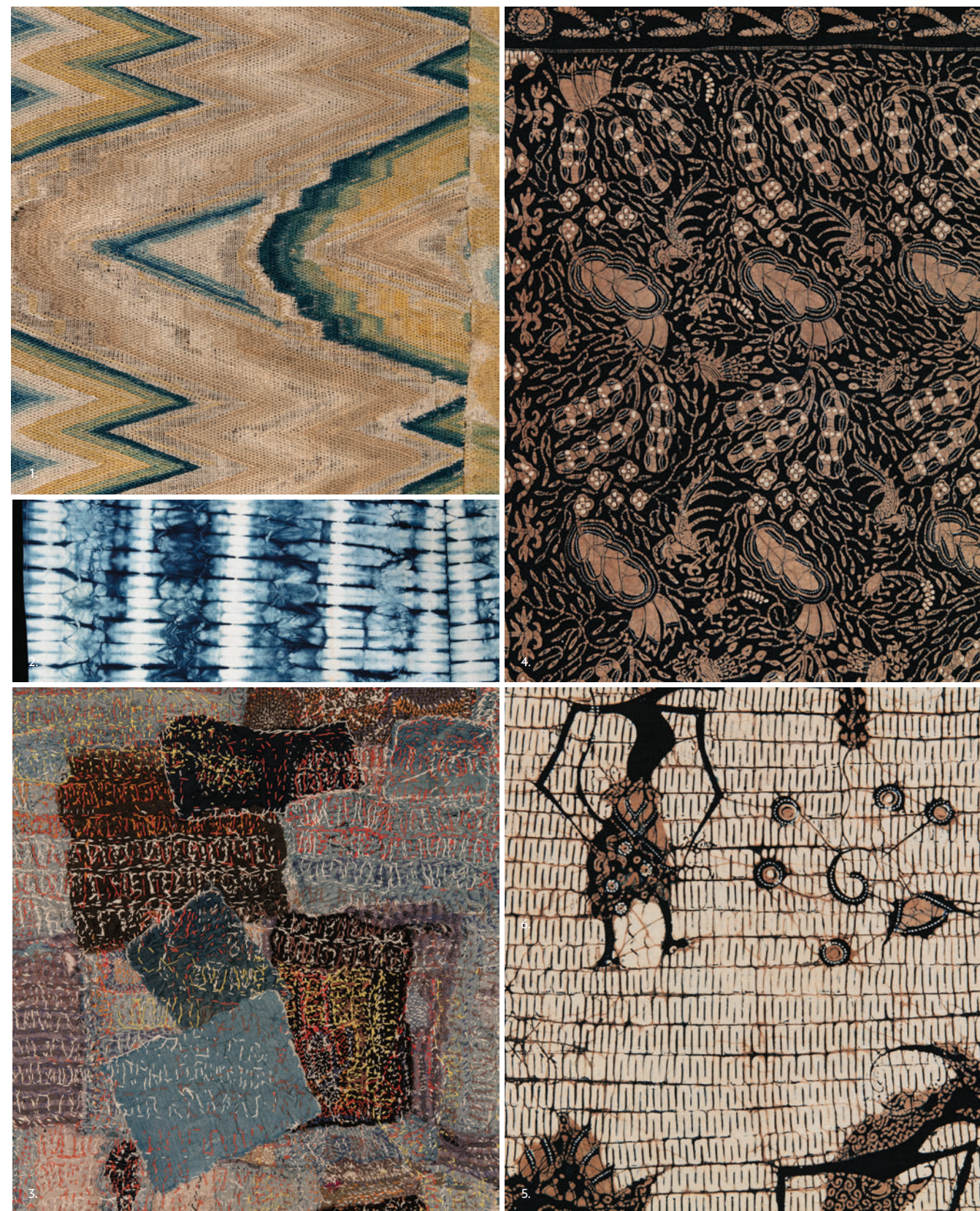
Designers considered both the patterning and cultural tradition from which these textiles originated to conceive a new design language infused with the soul of its creators. The museum's 30,000 piece textile and dress collection provided a wealth of inspiration incorporating unique resources from 100 countries across six continents. The collection's influence is representative of both the culture's and the artist's soul, and now of the carpet designers, while still referencing the integrity of the original materials.

Translating the cultural material into Durkan's broadloom and carpet plank, the design team honored the original motifs by creating an amalgam of new patterning instead of simply replicating them. The goal of the collaboration was to translate the textile inspiration into a new language that would connect the history, creativity and soul of the original material with hospitality end users to illicit the same emotions felt by designers when first surveying the Museum textiles.

Spirit Moderne is featured in Definity, Durkan's exclusive manufacturing technology which surpasses traditional luxury carpet by offering multi-level textures, more than twice the definition, superior performance and unmatched sustainability. The collection is also offered in Durkan's Synthesis, Pattern Perfect, PDI carpet tile and tufted broadloom.

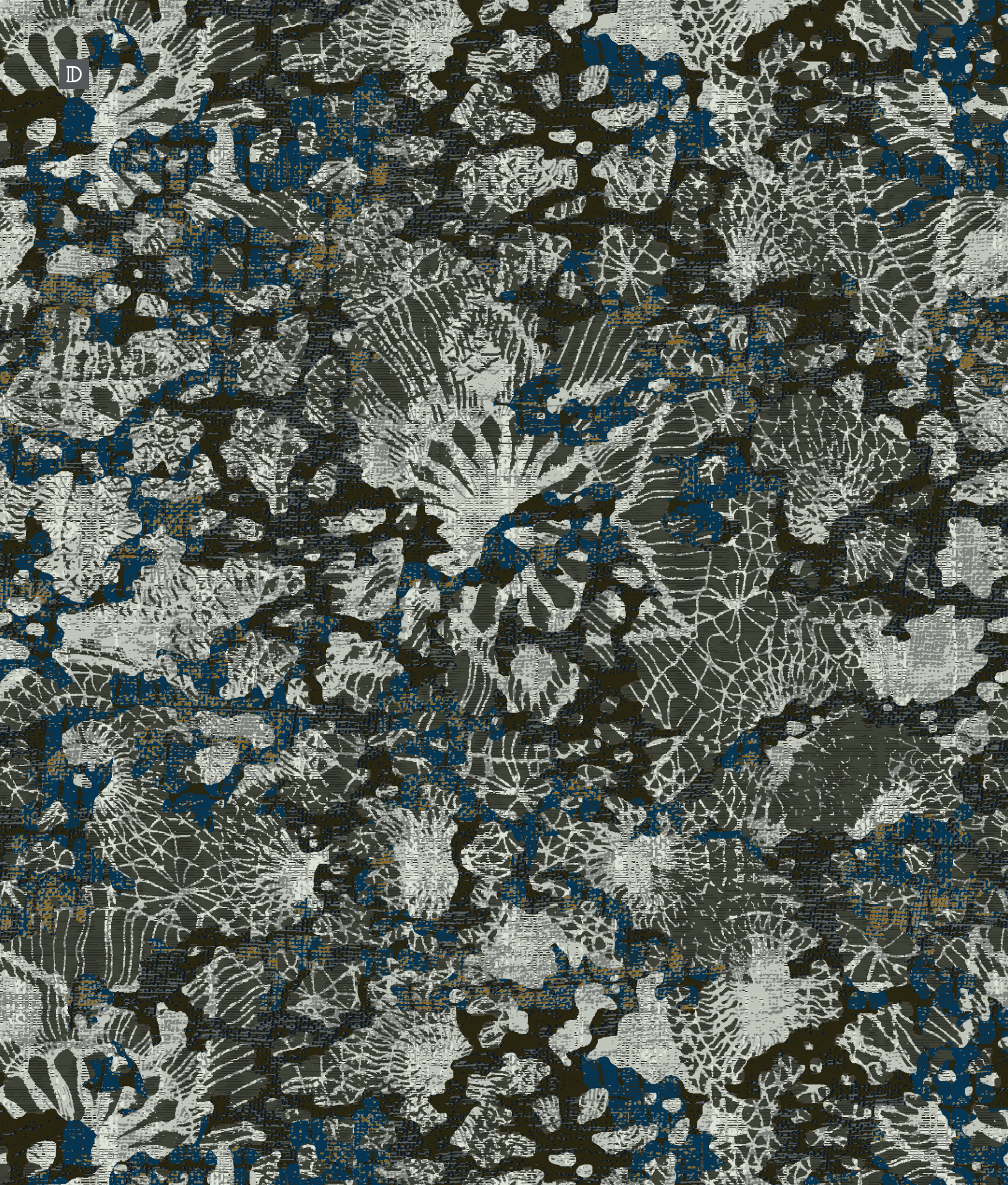


A portion of the proceeds from Durkan's new collection supports the Museum of International Folk Art in its mission to preserve and promote the artistic and craft traditions of the world's artisans.

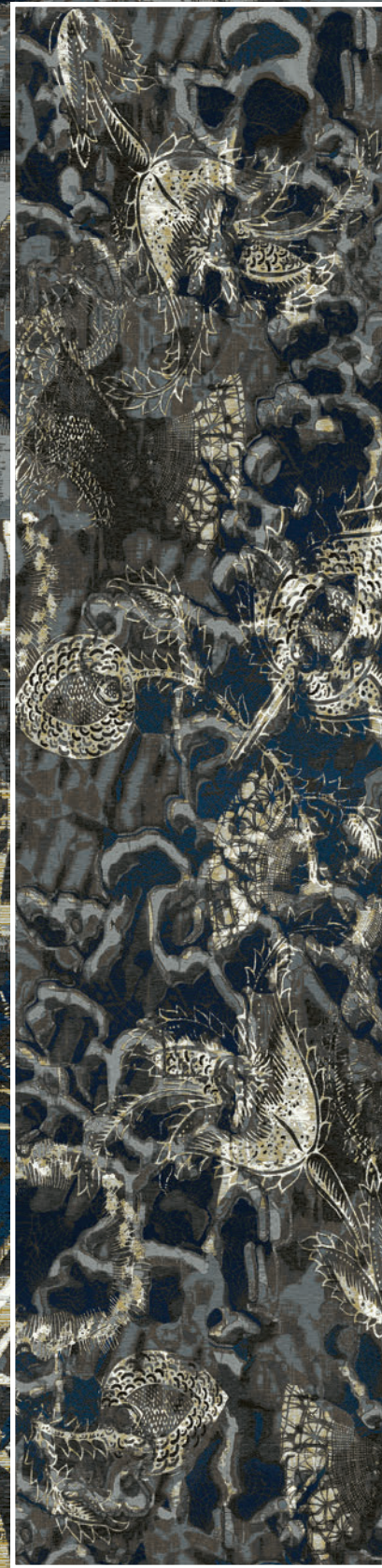
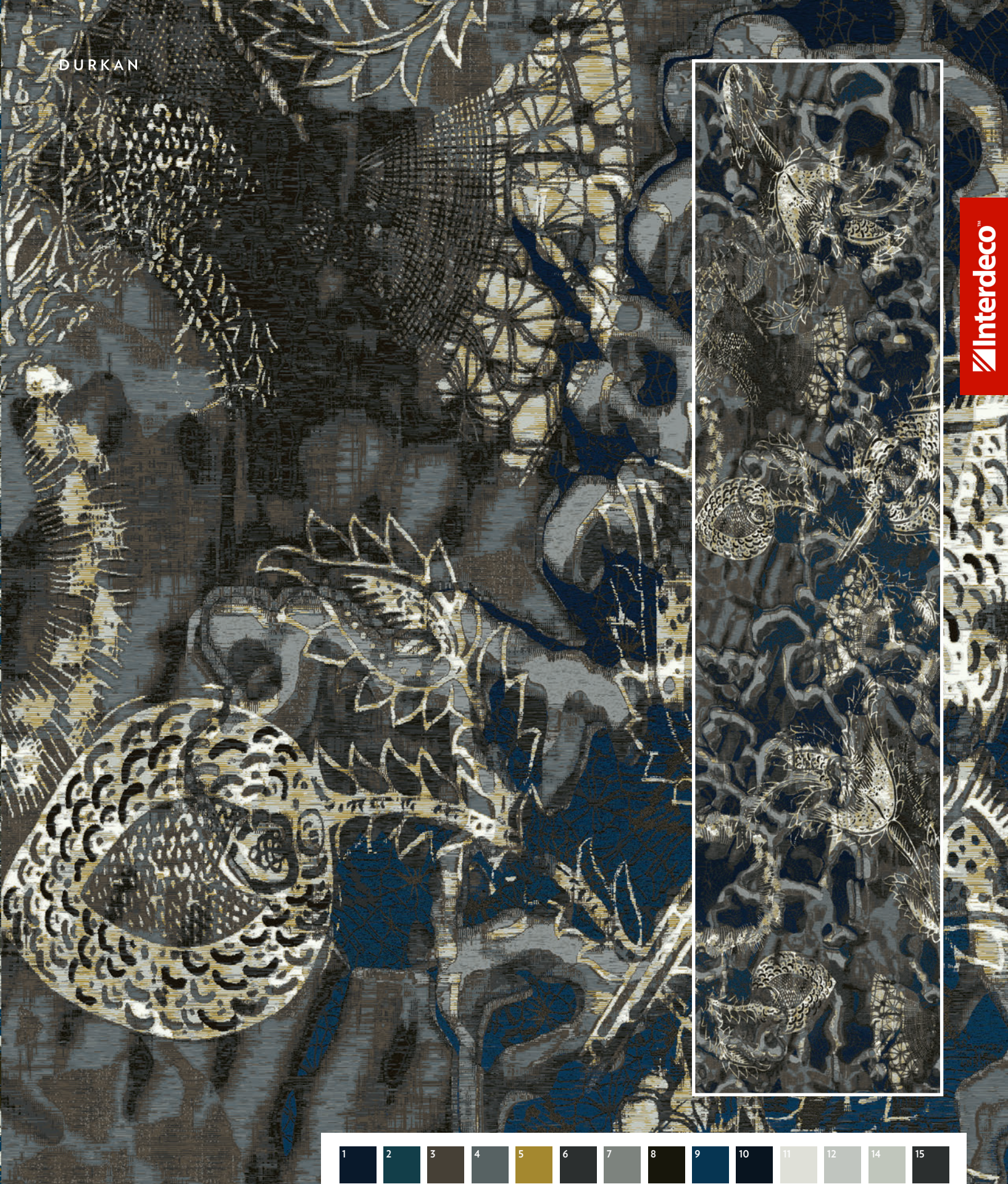


1. Bedspread, ca. 1950, New Mexico. Linen, silk. Museum of International Folk Art, gift of the Historical Society of New Mexico. A.5.2000.50
 2. Skirt, ca. 1958, Kaduna, Nigeria, Africa. Cotton. Museum of International Folk Art, International Folk Art Foundation Collection. FA. 1996.41.1
 3. Policarpio Valencia, embroidered textile, 20th century, New Mexico. Wool, cotton and cotton string. Museum of International Folk Art, bequest of Cady Wells. A.9.1954.28
 4. Skirt fragment, ca. mid-20th century, Java, Indonesia. Cotton batik and block print. Museum of International Folk Art, bequest of Margretta S. Dietrich. A. 1961. 10.12
 5. Skirt fragment, ca. mid-20th century, Java, Indonesia. Cotton batik. Museum of International Folk Art, bequest of Margretta S. Dietrich. A. 1961. 10.12

D



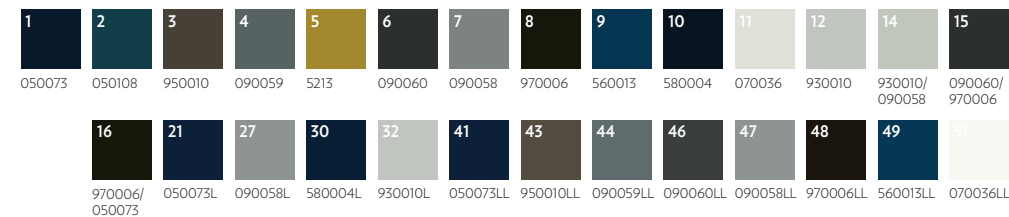
DURKAN



QTWFA71492-MW463
12' (w) X 12' (l)
Broadloom, Definity

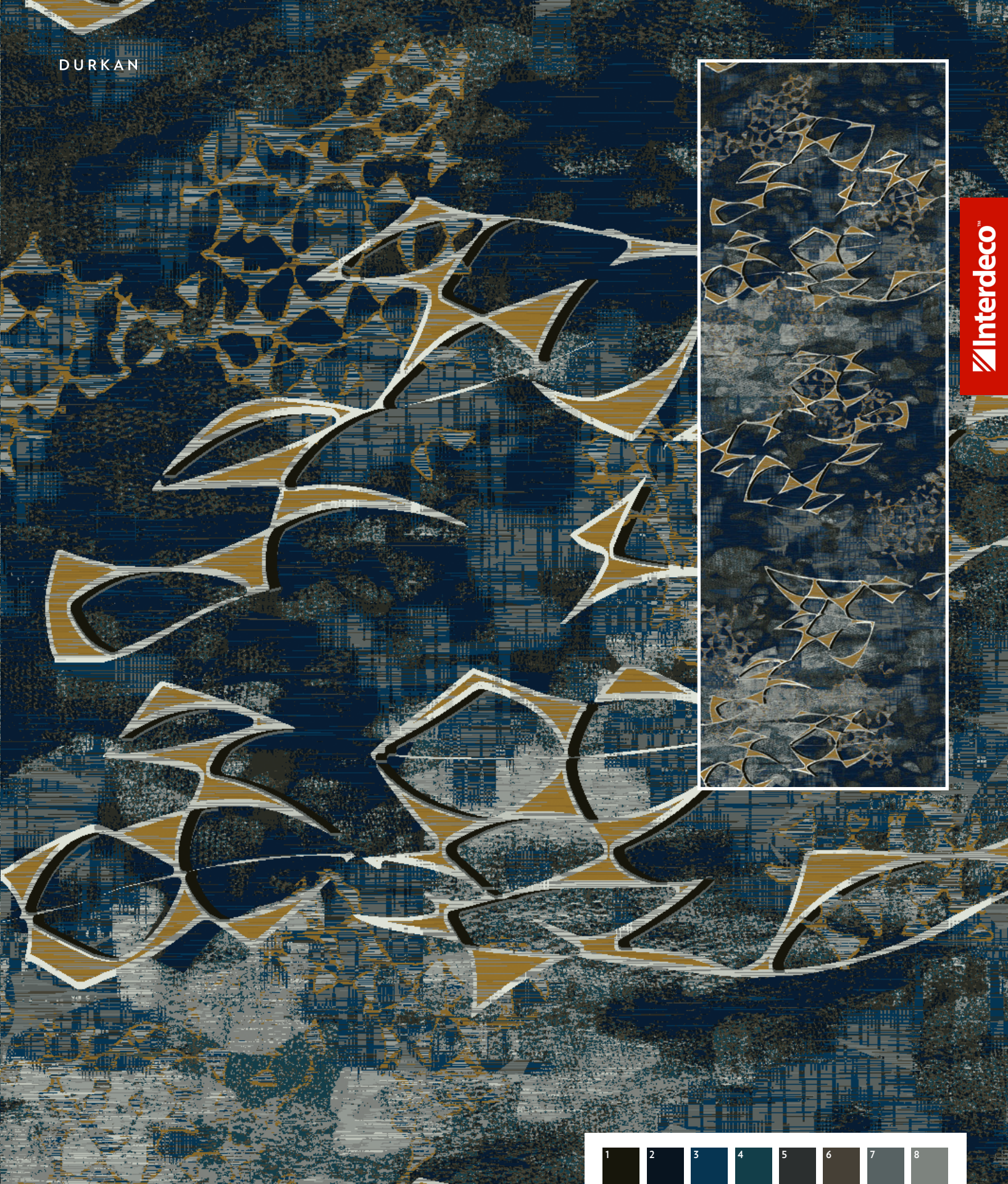


QTFFA71483-MW463
12' (w) X 50' (l)
Rug, Definity

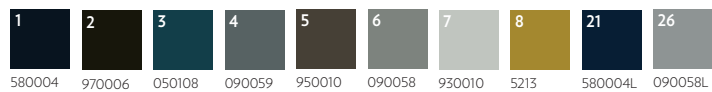


D

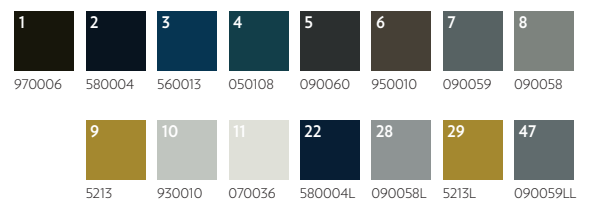
DURKAN



QTWFA71491-MW463
12' (w) X 7' (l)
Broadloom, Definity



QTWFA71501-MW463*
7'6" (w) X 24' (l)
Corridor, Definity
*Has less than 25% Loop





DURKAN



QWFA71499-MW463*
 12' (w) X 12' (l)
 Broadloom, Definity
 *Has less than 25% loop

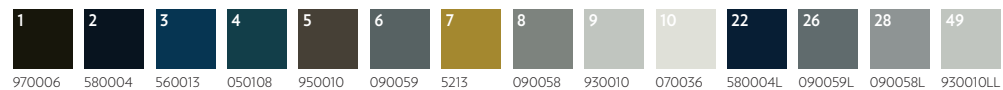
1	2	3	4	5	6	7	8	9	10	22	28	47
970006	580004	560013	090060	950010	090059	090058	5213	930010	070036	580004L	5213L	090058LL

D

DURKAN

Interdeco

QTFWA71493-MW463
12' (w) X 12' (l)
Broadloom, Definity



QTFWA71494-MW463*
12' (w) X 12' (l)
Broadloom, Definity
*Has less than 25% loop

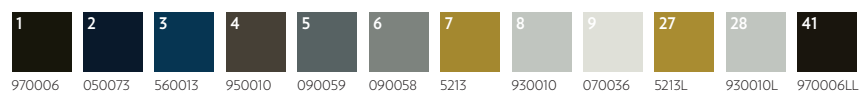


D

DURKAN

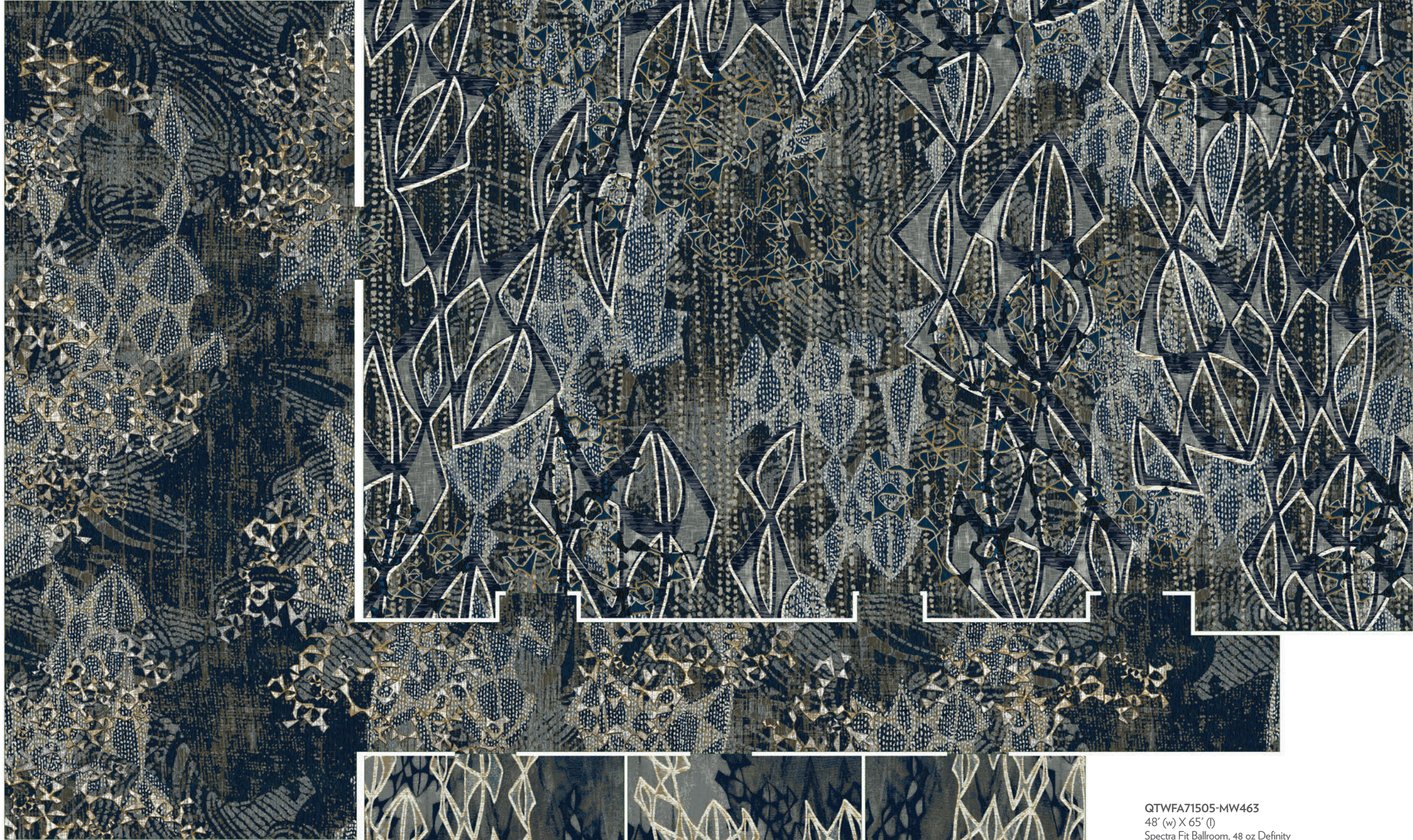


QWFA71495-MW463*
12' (w) X 12' (l)
Broadloom, Definity
*Has less than 25% loop



QWFA71497-MW463*
12' (w) X 12' (l)
Broadloom, Definity
*Has less than 25% loop





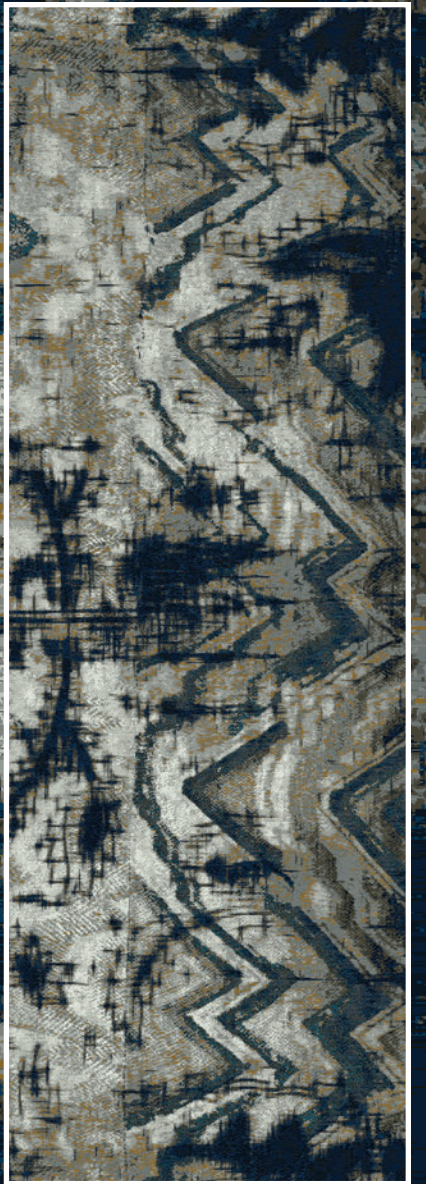
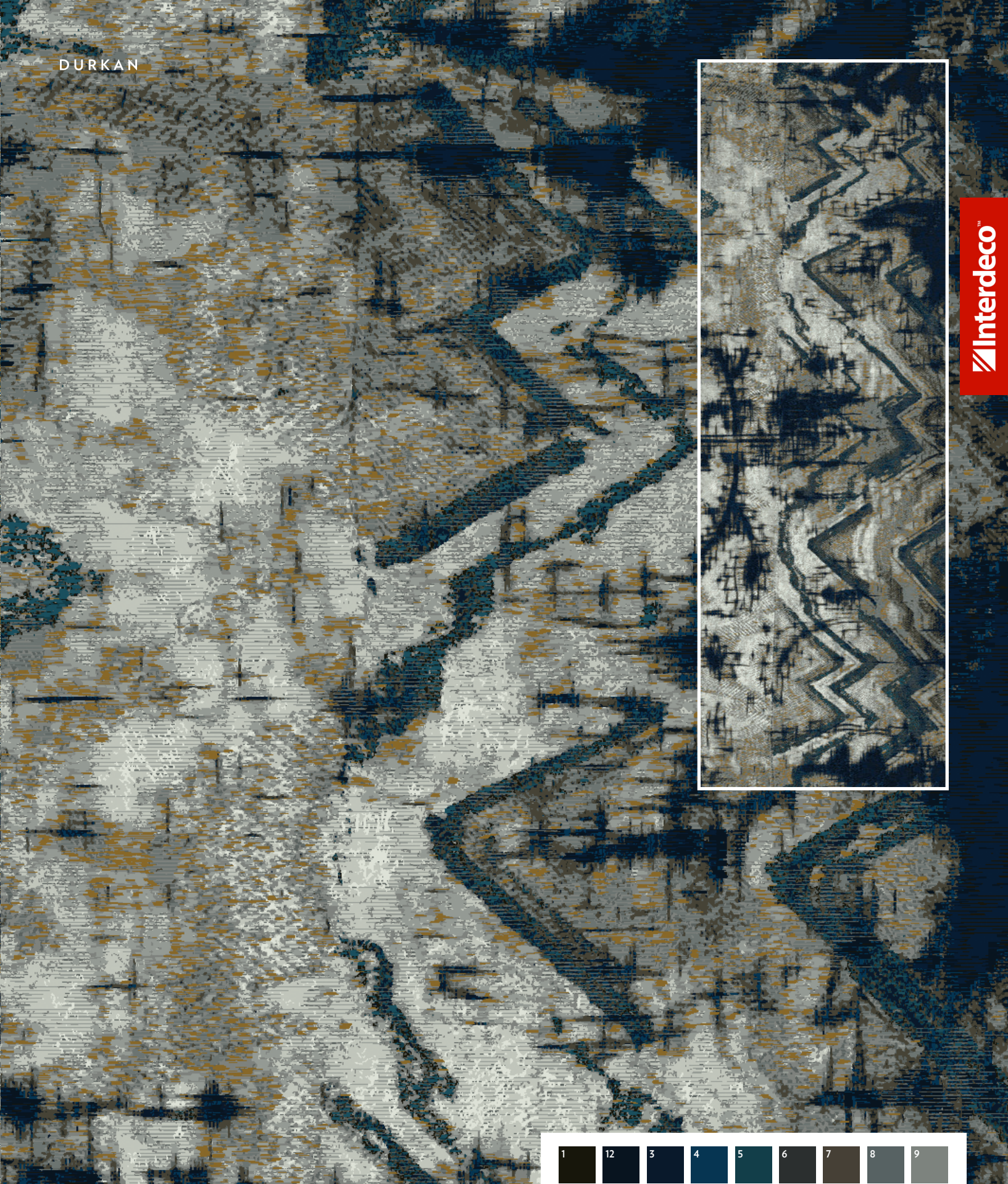
QTFWA71505-MW463
48' (w) X 65' (l)
Spectra Fit Ballroom, 48 oz Definity

QTFWA71504-MW463
60' (w) X 72' (l)
Spectra Fit Prefunction, 48 oz Definity

QTFWA71503-MW463
15' (w) X 20' (l)
Spectra Fit Meeting Room, 48 oz Definity

D

DURKAN

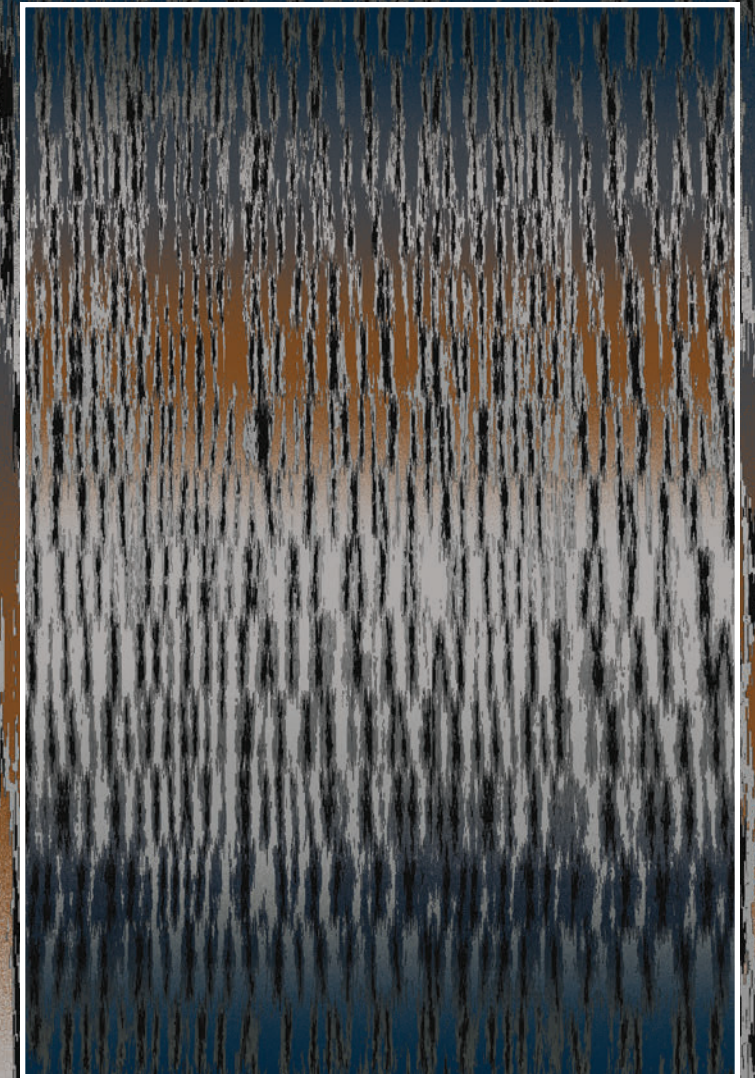


QTWFA71498-MW463*
12' (w) X 12' (l)
Broadloom, Definity
*Has less than 25% loop

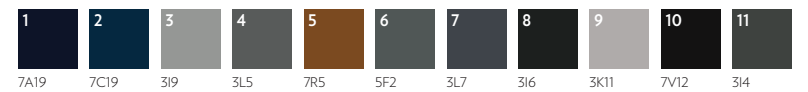
1	2	3	4	5	6	7	8	25	46
050073	560013	050108	090059	5213	090058	930010	070036	5213L	090058LL

QTWFA71502-MW463*
7'6" (w) X 24' (l)
Corridor, Definity
*Has less than 25% Loop

1	12	3	4	5	6	7	8	9
970006	580004	050073	560013	050108	090060	950010	090059	090058
10	11	12	25	28	29	42	49	
5213	930010	070036	050108L	090059L	090058L	580004LL	090058LL	



FA72798-MW463
12' (w) X 18' (l)
Broadloom, PDI



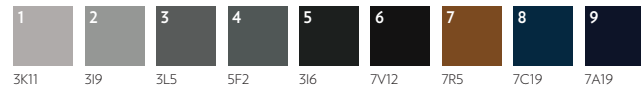
7A19 7C19 3I9 3L5 7R5 5F2 3L7 3I6 3K11 7V12 3I4

D

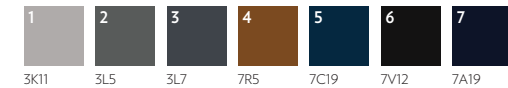
DURKAN

Interdeco

FA74573-MW463
12' (w) X 12' (l)
Broadloom, PDI



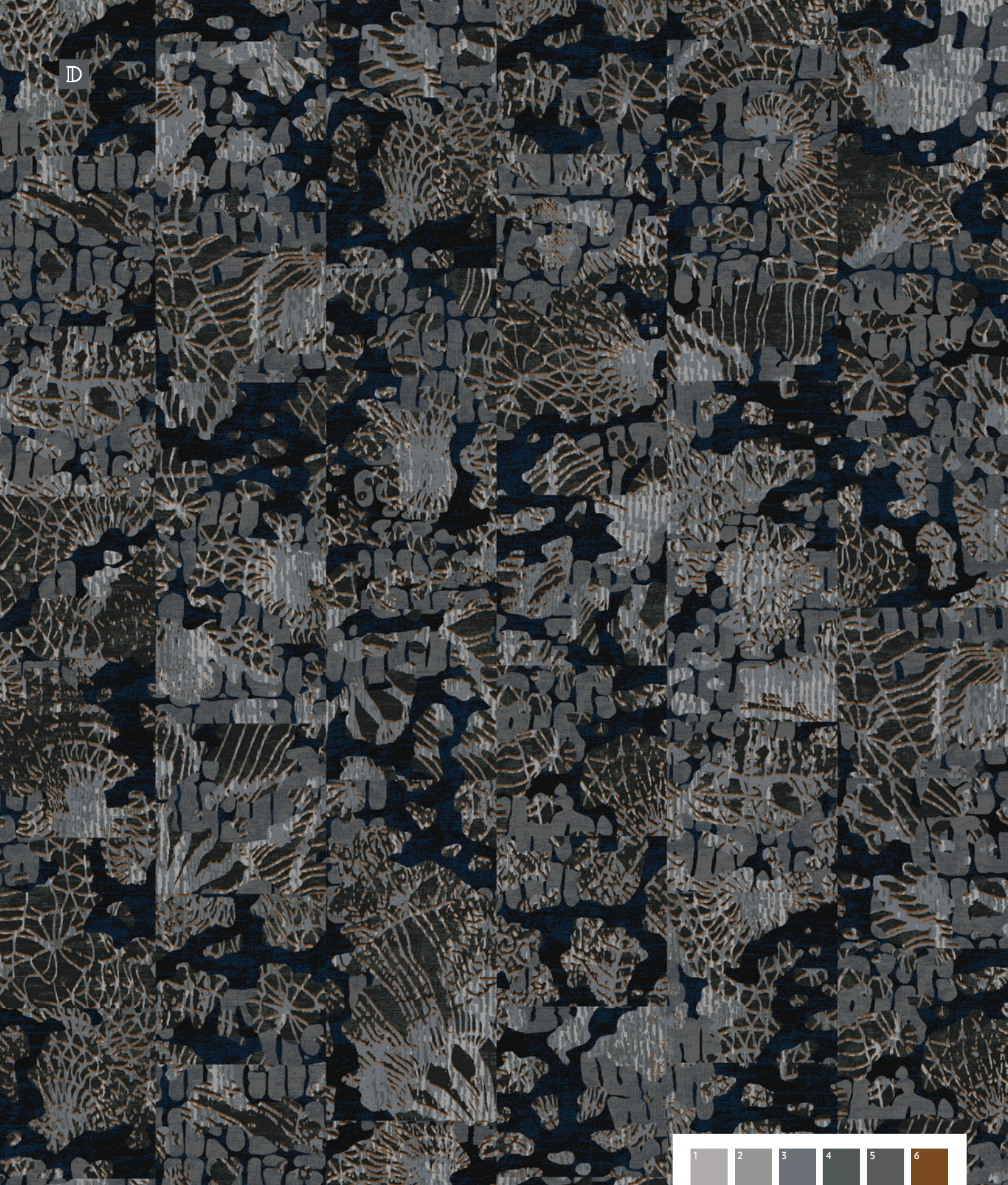
FA74296-MW463
12' (w) X 18' (l)
Broadloom, PDI



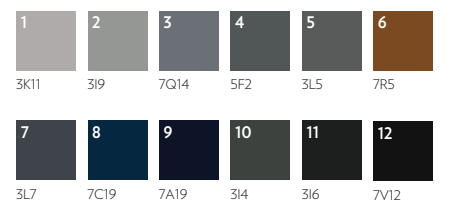
D

DURKAN

Interdeco™



CTFA74066-MW463 (above and opposite in Brick Ashlar Installation)
24" (w) X 24" (l) Tile, PDI
FA73347-MW463
12' (w) X 12' (l) Broadloom, PDI



Spirit Moderne Collection

PATTERN
PERFECT
BROADLOOM



DURKAN

Right, top:
Skirt fragment, ca. mid-20th century, Java, Indonesia. Cotton batik. Museum of International Folk Art, bequest of Margretta S. Dietrich. A. 1961. 10.12

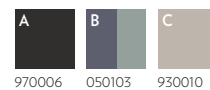
Right, bottom:
Policarpio Valencia, embroidered textile, 20th century, New Mexico. Wool, cotton and cotton string. Museum of International Folk Art, bequest of Cady Wells. A.9.1954.28

D

DURKAN

Interdeco™

10CP666U
12' (w) X 11' (l)
Pattern Perfect Broadloom



12PM641D
3' (w) X 6' (l)
Broadloom



Spirit Moderne is featured in Definity, Durkan's exclusive manufacturing technology which surpasses traditional luxury carpet by offering multi-level textures, more than twice the definition, superior performance and unmatched sustainability. The collection is also offered in Durkan's Synthesis, Pattern Perfect, PDI carpet tile and tufted broadloom.

Please contact your rep or visit www.durkan.com for more information.

MODER SLT0004010



DURKAN. IMAGINE THAT.
508 East Morris Street, Dalton, GA 30721
(800) 241-4580 | Durkan.com

A division of  Mohawk Group

DEFINITY | SYNTHESIS | PDI | CYP | TUFTED | CARPET TILE
ERT | RUBBER | SHEET | LAMINATE | HARDWOOD | RUGS

