

New Basics III



Weldlok® STANDARD PERFORMANCE BACKING

Weldlok® is Mohawk Group's standard broadloom backing system specifically designed for commercial applications. The Weldlok backing is laminated to our products utilizing a commercial thermoset adhesive. This adhesive is designed to encapsulate and penetrate the carpet back stitch in the main application coat, while the second application coat secures the secondary backing to the carpet substrate for a cost effective performance standard.

PERFORMANCE

- Standard backing specifically designed for commercial applications
- Excellent pattern match capabilities
- For use with direct glue or stretch in installations
- 10 year Limited Warranty
- Excellent choice for most commercial environments

BUDGET

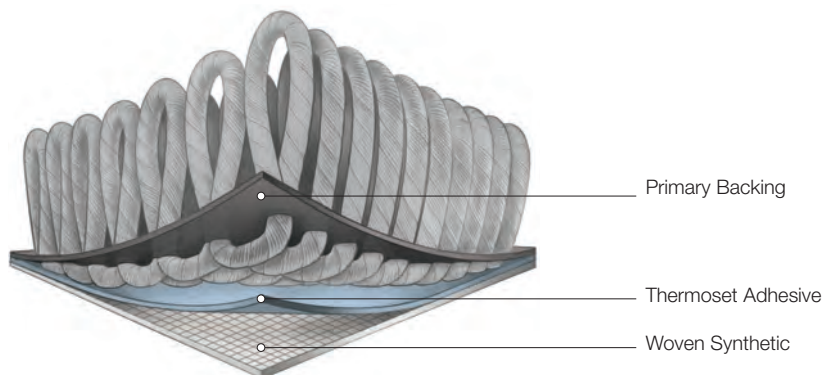
- Standard performance backing system for the most budget conscious projects

SUSTAINABILITY

- Recyclable
- A minimum of 45% recycled content*
- Certified Gold in accordance with NSF/ANSI 140
- CRl Green Label Plus certified
- May contribute to or comply with LEEDv4, Living Building Challenge and WELL Building Standard
- Declare Label, HPD and EPD information available
- Red List Free

SERVICE

- Products available through Quickship offering (up to 2,000 square yards within 10 business days)



*Recycled content claim third party verified by UL (Underwriters Laboratory)
Total recycled content of the product style varies by backing type, face weight and fiber type



Unibond Plus FOR HIGH PERFORMANCE ENVIRONMENTS

Unibond® Plus is an advanced high performance backing system designed to provide long term carpet durability while delivering sustainable benefits. The Unibond Plus backing system utilizes a high performance thermoset adhesive designed to deliver greater dimensional stability and long term performance by encapsulating the carpet back stitch, and securing the secondary backing to the substrate. This advanced thermoset adhesive contains greater than 30% pre-consumer recycled content by total product weight. Unibond Plus is ideal for high performance environments.



PERFORMANCE

- High performance backing designed for demanding commercial environments
- Greater dimensional stability—no growing or shrinking
- High tuft bind properties
- Eliminates edge ravel and zippering
- Limited Lifetime Warranty protects against tuft bind, edge ravel, zippering and delamination*
- Excellent choice for demanding commercial environments

INSTALLATION

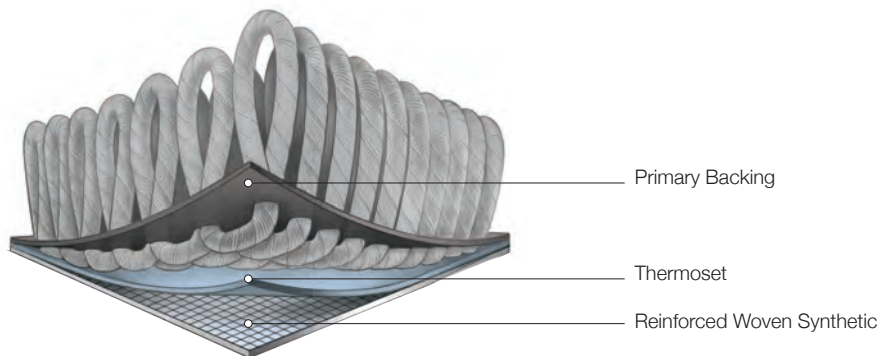
- For use with direct glue or stretch in installations

SUSTAINABILITY

- Recyclable
- Contains greater than 30% pre-consumer recycled content by total product weight**
- Unibond Plus may contribute to or comply with LEEDv4 credits MR 4.0, MR 5.0, IEQ 4.3 and innovation credit for NSF 140
- Certified at the Gold Level in accordance with NSF/ANSI 140
- Certified low VOC's under CRI Green Label Plus Program
- Compliant with LEED® EQ4.1 low VOC emitting when installed with Mohawk Group recommended adhesive and seam sealer

SERVICE

- Products available through Quickship offering (up to 2,000 square yards within 10 business days)



*See Mohawk Group official warranty documents for further details at www.mohawkgroup.com

**Recycled content claim third party verified by UL (Underwriters Laboratory)

LEED® and the related logo is a trademark owned by the U.S. Green Council and is used with permission

EcoFlex™ Matrix SUSTAINABLE CARPET TILE BACKING

Mohawk Group continues its dedication to sustainable solutions with EcoFlex™ Matrix, the next generation in carpet tile backing. Using advanced materials and patent pending engineering, EcoFlex Matrix lowers environmental impact without sacrificing performance. EcoFlex Matrix simplifies floor preparation and installation, greatly reduces sub-floor moisture concerns, and is easier to ship and handle.



PERFORMANCE

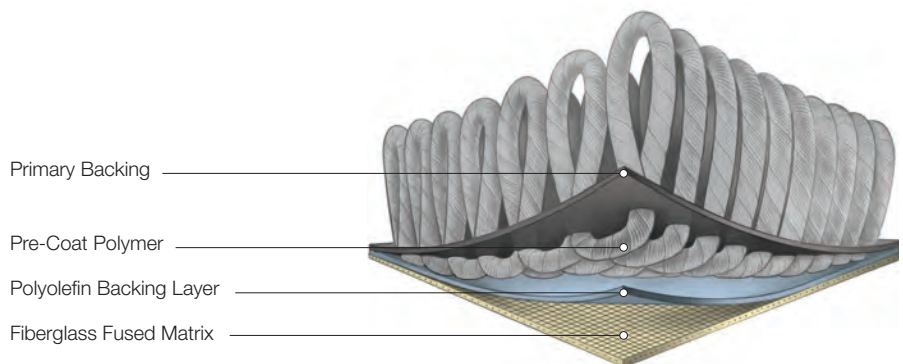
- Provides permanent dimensional stability
- Tiles are impervious to moisture damage from spills and water extraction cleaning
- Up to Lifetime Limited Carpet Tile Warranty for: Wear, Static Protection, Edge Raveling/Zippering, Delamination, Dimensional Stability*
- Seamless transitions between carpet and hard surface flooring with Mohawk Group's 2.5mm ERT resilient products

INSTALLATION

- Simplifies complex floor preparation with no need to encapsulate old adhesives**
- Greatly reduces sub-floor moisture concerns and saves money on mitigation
- Worry free installation with no visible moisture present using our Flexlok Tab System
- Superior construction offers reliability for the life of your installation

SUSTAINABILITY

- EcoFlex Matrix is manufactured using less energy than other carpet tile products
- Polyolefin backing contains no plasticizers
- Contains a minimum of 40% pre-consumer recycled content based on total product weight***
- May contribute to or comply with LEEDv4, Living Building Challenge, and WELL Building Standard
- CRI Green Label Plus certified
- Declare Red List Free
- Recyclable through Mohawk's ReCover Program
- Able to ship more per box resulting in a lower environmental impact from transportation



* Lifetime or 10 Year Limited Warranty varies by fiber type. Please see specifications for details

**Consult Mohawk Group Installation Instructions for any applicable restrictions

***Recycled content claim third party verified by UL (Underwriters Laboratory)



Elemental Edges

FINISHING ACCESSORIES

At Mohawk Group we believe in providing project solutions that are easy to select and readily available. Elemental Edges is a complete portfolio of free-to-ship accessories for all your flooring installation and finishing needs. The program is offered in 14 QuickShip colors that coordinate perfectly with our full suite of soft and hard surface products.



Wall Base

Seamlessly coordinate your wall base and Mohawk Group floor covering from our variety of QuickShip wall base offerings.

AVAILABLE IN

- Rubber
- Vinyl
- 4" or 6" in height
- Coved or straight
- 4' lengths or 96' & 120' rolls
- 1/8" gauge
- .080" gauge (4" Cove vinyl)

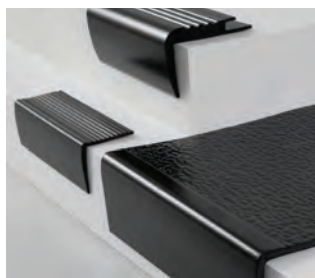


Installation Accessories

Add a functional finishing touch to your coordinated color scheme with Mohawk Group installation accessories. Proprietary Rubber formulations are shrink and crack-proof, and won't fade, even in direct sunlight.

CHOOSE FROM

- Universal Transitions
- Reducers
- Cove Stick
- Adaptors
- Stair Solutions



Stair Solutions

Specify 12.5" regular tread or 20" integrated tread/riser, available in 48" and 72" lengths. Round and hammered finishes are available with standard square nose. All profiles are available with or without visually impaired strips.

CHOOSE FROM

- Stair Treads
- Resilient Landing Tiles
- Risers
- Nosings

Specifications

New Basics III BC398 / BQ398
New Basics III 26 BC399 / BQ399
New Basics III Tile BT400 / QB400

DESIGN

Size	New Basics III, New Basics III 26	12' width (3.66m)
	New Basics III Tile	24" x 24" (.6096m x .6096m)
Surface Appearance		Textured Heathered Loop
Fiber Type		Colorstrand® SD Nylon
Dye Method		Solution Dyed
Installation Methods (Tile)		Quarter Turn / Brick Ashlar / Vertical Ashlar
Colors Available		14

PERFORMANCE

Construction	Tufted
Gauge	1/10" (39.37 rows per 10cm)
Stain Release Technology	EcoSentry Plus Stain Protection
Soil Release Technology	EcoSentry Soil Protection
Backing Material	
New Basics III	Weldlok®
New Basics III 26	Unibond Plus
New Basics III Tile	EcoFlex Matrix
Flammability	ASTM E 648 - Class 1 (Glue Down)
Smoke Density	ASTM E 662 - Less than 450
Static Propensity	AATCC - 134 Under 3.5 KV

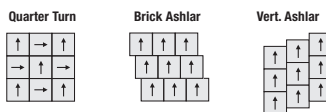
SUSTAINABILITY

Certification	Living Product Challenge Petal Certified, Declare Red List Free (Broadloom), Declared (Tile)
Indoor Air Quality	
New Basics III	Green Label Plus Certified #8216
New Basics III 26	Green Label Plus Certified #3802
New Basics III Tile	Green Label Plus Certified #1171
NSF 140	Gold

SERVICE

Warranties	Lifetime Limited Wear Warranty (New Basics III), Lifetime Limited Unibond Plus Warranty (New Basics III 26), Lifetime Limited Carpet Tile Warranty (New Basics III Tile), Lifetime Limited Colorfastness to Light, 10 Year Limited Colorfastness to Atmospheric Contaminants, 10 Year Stain Warranty, Lifetime Static
------------	---

Installation Instructions:



Mohawk Group warrants its adhesives for the life of the original installation only when a Mohawk Group style (product) is installed. Mohawk's floor preparation procedures must be followed to ensure that the substrate has been prepared properly. Failure to use Mohawk Group adhesives or to follow Mohawk's floor preparation procedures will void all lifetime adhesive warranties. Please contact your local Sales Representative for installation guidelines.

These patterns contain inherent characteristics which may result in pattern run off and/or pattern appearance variations at the seams or tile edges (darker or lighter pattern lines). These characteristics are inherent in the patterns and are not manufacturing defects. Consideration to these characteristics should be given when selecting an installation method.

Chair pads are recommended under office chairs with roller casters to preserve appearance retention, act as a deterrent toward delamination and to prevent premature or accelerated wear. Walk-off tiles from the Tuff Stuff II Collection are recommended at entryways to reduce soiling.

Mohawk Group is providing this architect folder for the purpose of promoting our commercial business. This folder and its samples shall remain the property of Mohawk Group. Color may vary from dye lot to dye lot. Substitution of material may be made due to improved technology, supply limitations or other factors. The performance of this product is not affected by such variations.

For current and complete specifications please visit www.mohawkgroup.com

recover
carpet recycling program
877-3RE-CYCL



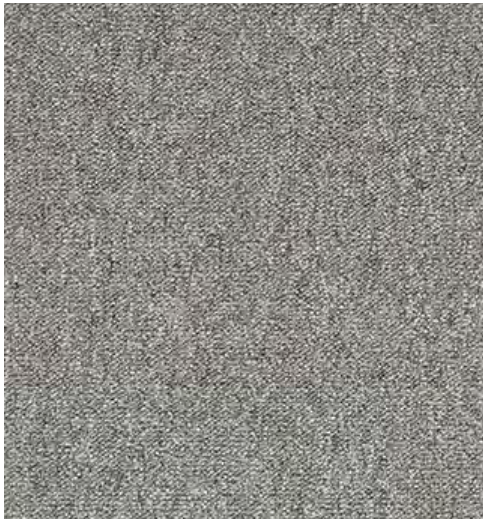
Produced with recycled materials

Mohawk Group

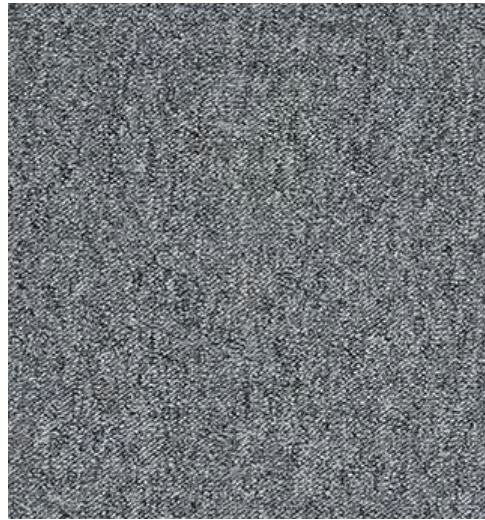
Mohawk Group
160 South Industrial Blvd.
Calhoun, GA. 30701
1-800-554-6637
mohawkgroup.com

QSNB3 8PG BROCHR LT

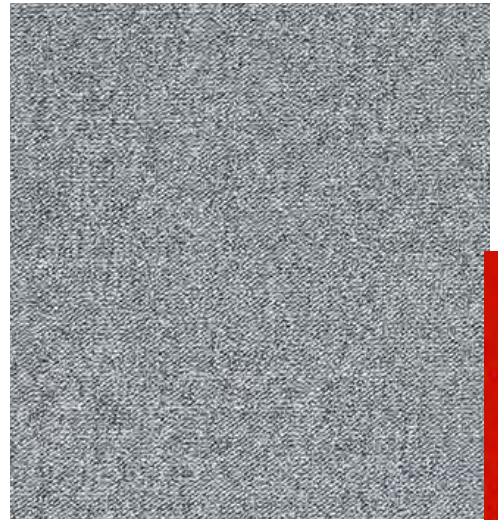




Sienna
837



Camel
928



Birch Gray
948



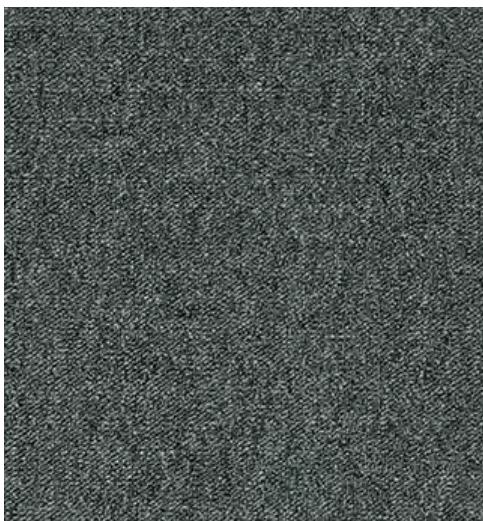
Tomato
374



Twilight Shadow
978



Ironstone
679



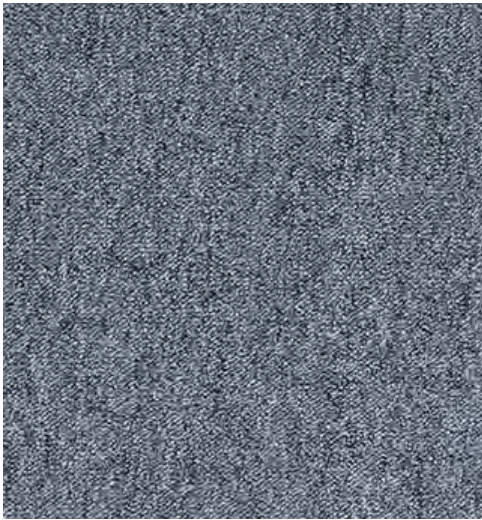
Emerald
689



Portofino
559



Blue Ribbon
589



Gravel
965



Steel Gray
719



Stainless Steel
964



Bark
879



Obsidian
989