



Printed on 50% post consumer waste (PCW) fiber manufactured using wind power.

We have tried our very best to accurately represent product colors. However, due to the nature of printed materials, color of actual products may vary slightly. Please request a sample to see actual product color.

www.interface.com

United States Headquarters
1280 West Peachtree Street NW
Atlanta, GA 30309
1.800.634.6032

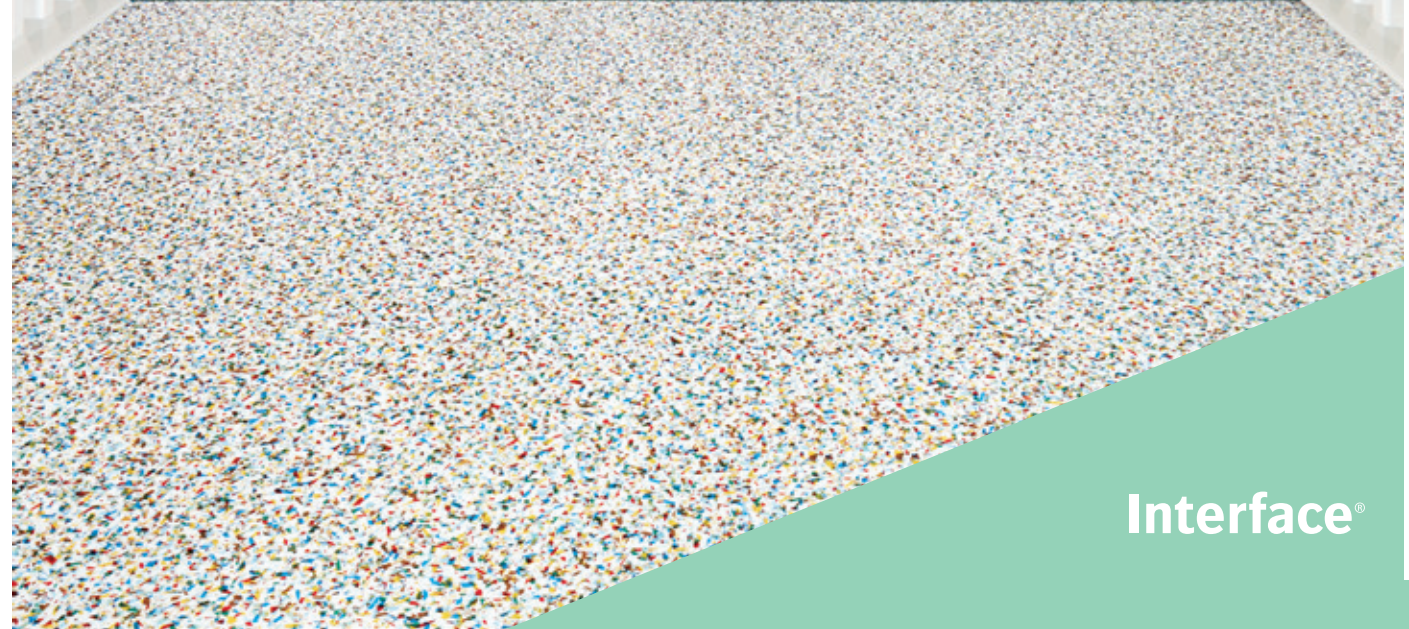
Canadian Headquarters
233 Lahr Drive
Belleville, ON K8N 5S2
1.800.267.2149 ext.52128

Brazilian Headquarters
Rua Surubim, 577 - Conjuntos
73/74 7º Andar
04571-050 - São Paulo - SP
+ 55 11 2196 0900

Latin American Headquarters
Montes Urales # 415 Piso 6
Col. Lomas de Chapultepec
México City, D.F. 11000
Mexico
+ 52 55 6395 5100

CIM # IFS00836 06/2019

Look Both Ways Collection | LVT



Climate change is undeniable. And reversible. Our mission is to prove it. Join the #ClimateTakeBack and help create a climate fit for life.

Interface®

Monolithic textures denoting gravity and substance live with light-hearted color and confetti. Unexpected combinations of materials inspire creative outcomes. Celebrate the mix!

Look Both Ways is a collection of carpet tile and LVT patterns combining Zen-like purity with playfulness. Marrying purpose and function with your intention, these styles create landscapes that perform and delight in infinite ways.

Walk of Life™, the bedrock of the LVT collection, is gritty, not polished. Sharing the same urban gray palette, Walk the Aisle™ sparkles with a luminescent fleck that energizes the surface. Walk About™ appears carved in ways that conjure pattern-love from the 1920s, 1980s, and today. And finally Walk on By™ is a vision of pure joy in brights & neutrals. Step, walk or run, but definitely look both ways for design inspiration.

Carbon Neutral Floors™ Like all of our products, globally, Look Both Ways is carbon neutral. Join us in creating a climate fit for life. **#ClimateTakeBack**







LVT PRODUCT WALK ABOUT COLOR A01402 PUMICE INSTALLED MONOLITHIC
CARPET PRODUCT STEP THIS WAY COLOR 106323 ALBA INSTALLED BRICK

www.interface.com



LVT PRODUCT WALK ON BY COLOR A01502 MONOCHROME
CARPET PRODUCT STEP IN TIME COLOR 106316 JET INSTALLED MONOLITHIC







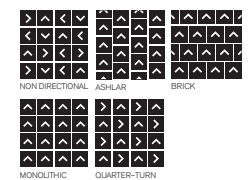
Product Number	A012 (<i>Walk of Life</i>)
Product Number	A013 (<i>Walk the Aisle</i>)
Product Number	A014 (<i>Walk About</i>)
Product Number	A015 (<i>Walk on By</i>)
Product Construction	High Performance Luxury Vinyl Tile
Class / ASTM F1700	Class III Printed Vinyl Tile
Wear Layer Thickness	22 mil
Total Thickness	4.5 mm
Backing Class	Commercial Grade
Finish	Ceramor™ Coating
Nominal Dimensions	50cm x 50cm (19.69 in x 19.69 in)

Performance	
IIC Sound Rating	(ASTM E492-09) 57 IIC
Slip Resistance	(ASTM D2047) >0.55 wet/dry, ADA Compliant
Static Load Limit	(ASTM F970) 1500 psi
Flexibility	(ASTM F137) Passes
Resistance to Heat	(ASTM F1514) Passes
Resistance to Light	(ASTM F1515) Passes
Radiant Flux	(ASTM E648) Class I
Smoke Density	(ASTM E662) Passes, ≤ 450
Size & Squareness	(ASTM F2055) Passes, +/- 0.016 in. per linear foot
Thickness	(ASTM F386) Passes
Dimensional Stability	(ASTM F2199) Passes
Residual Indentation	(ASTM F1914) Passes
Resistance to Chemicals	(ASTM F925) Passes

Environmental	
Indoor Air Quality	FloorScore®/CDPH 01350 Certified for low-VOC emissions
Material Composition	Free of Ortho Phthalates, Added Formaldehyde and Heavy Metal Stabilizers
Ingredients & Life Cycle Impacts	Environmental Product Declaration
Carbon Footprint	3rd Party Verified Carbon Neutral
Sustainability Assessment	NSF/ANSI 332, Meets Certification Guidelines
LEED v4	Contributes to IEQ: <i>Low Emitting Materials</i> ; M&R: <i>EPD</i> and <i>EPR</i>
End of Life	Fully Recyclable LVT to Carpet Tile Backing

Packaging	
Square Feet per Carton	26.91 sq. ft. (2.5 m ²)
Pieces per Carton	10
Weight per Carton	40 lbs (18 kg)
Cartons per Pallet	40
Pallets per Truckload	20

Technical Information	
Installation	See Interface LVT Installation Guidelines online
Maintenance	See Interface LVT Maintenance Guidelines online
Reclamation	Recyclable through ReEntry® - Call 1.888.733.6873 (U.S.) / 1.866.398.3191 (Canada)
Warranty	15 Year Limited Commercial Warranty
Installation Methods	Non Directional, Ashlar, Brick, Monolithic, Quarter-Turn



All product specifications reflect averages derived from product sample testing, are subject to normal manufacturing and testing tolerances and inherent pattern variances, and may be changed without notice. For more information about these and other important attributes of the product(s) described herein, including recycled content and product warranty information, please see our full LVT product disclaimer @ interface.com.



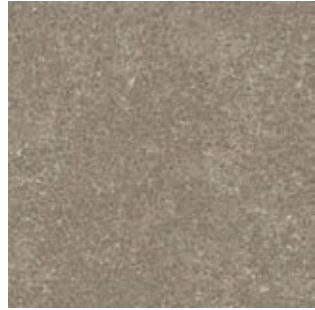
LVT PRODUCT WALK THE AISLE COLOR A01304 CARBON
LVT PRODUCT WALK ON BY COLOR A01501 POLYCHROME INSTALLED PATTERN BY-TILE

Walk of Life™ Colorline

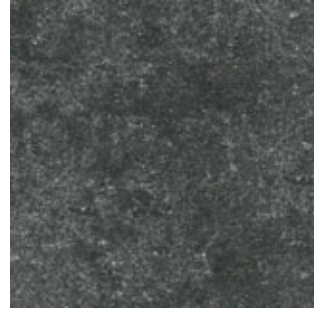
Walk the Aisle™ Colorline

Walk About™ Colorline

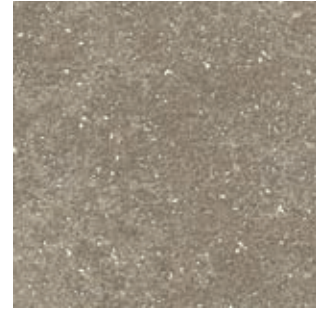
Walk on By™ Colorline



A01201 WARM ASH



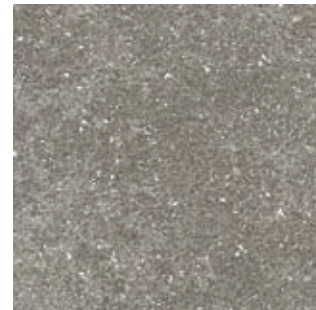
A01205 CHARCOAL



A01301 WARM ASH



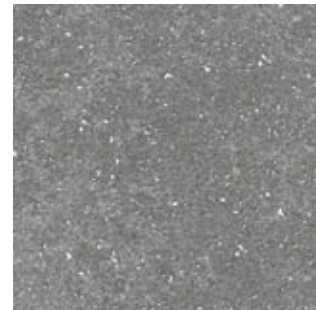
A01202 PUMICE



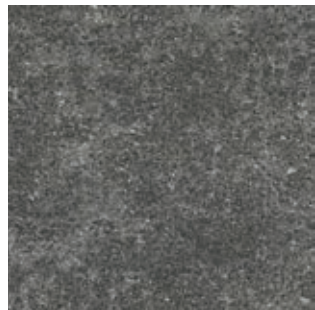
A01302 PUMICE



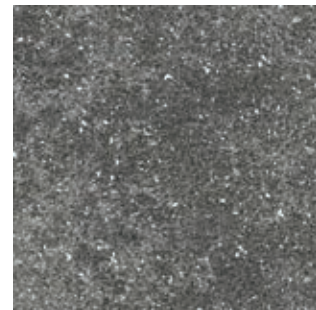
A01203 COOL ASH



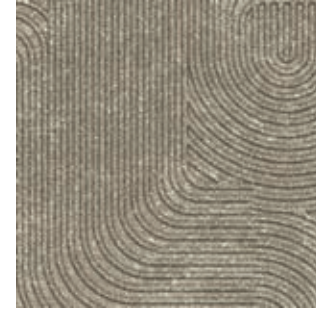
A01303 COOL ASH



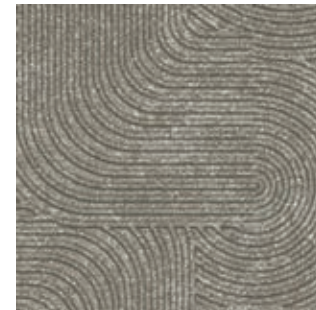
A01204 CARBON



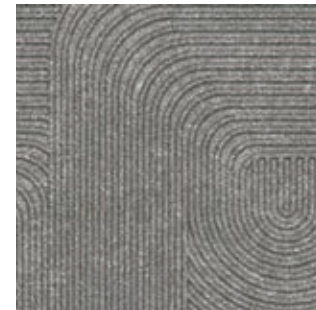
A01304 CARBON



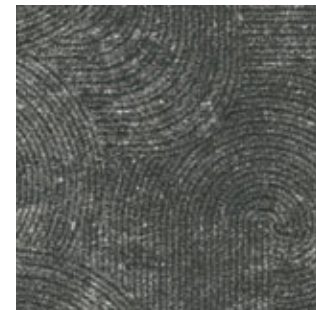
A01401 WARM ASH



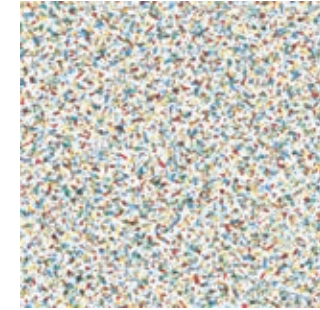
A01402 PUMICE



A01403 COOL ASH



A01404 CARBON



A01501 POLYCHROME



A01502 MONOCHROME

LVT & Carpet. A power duo.

Look Both Ways combines hard and soft flooring with intentional design, which makes choosing the right materials for your space even easier. Seamlessly move from carpet tile in a private work area to LVT in a busy corridor, without changing patterns or using transition strips. Brighten a small, but heavily trafficked space with a lighter shade of LVT and create nested areas with inset area rugs. Every mix is a match with no sacrifice of performance or aesthetics.



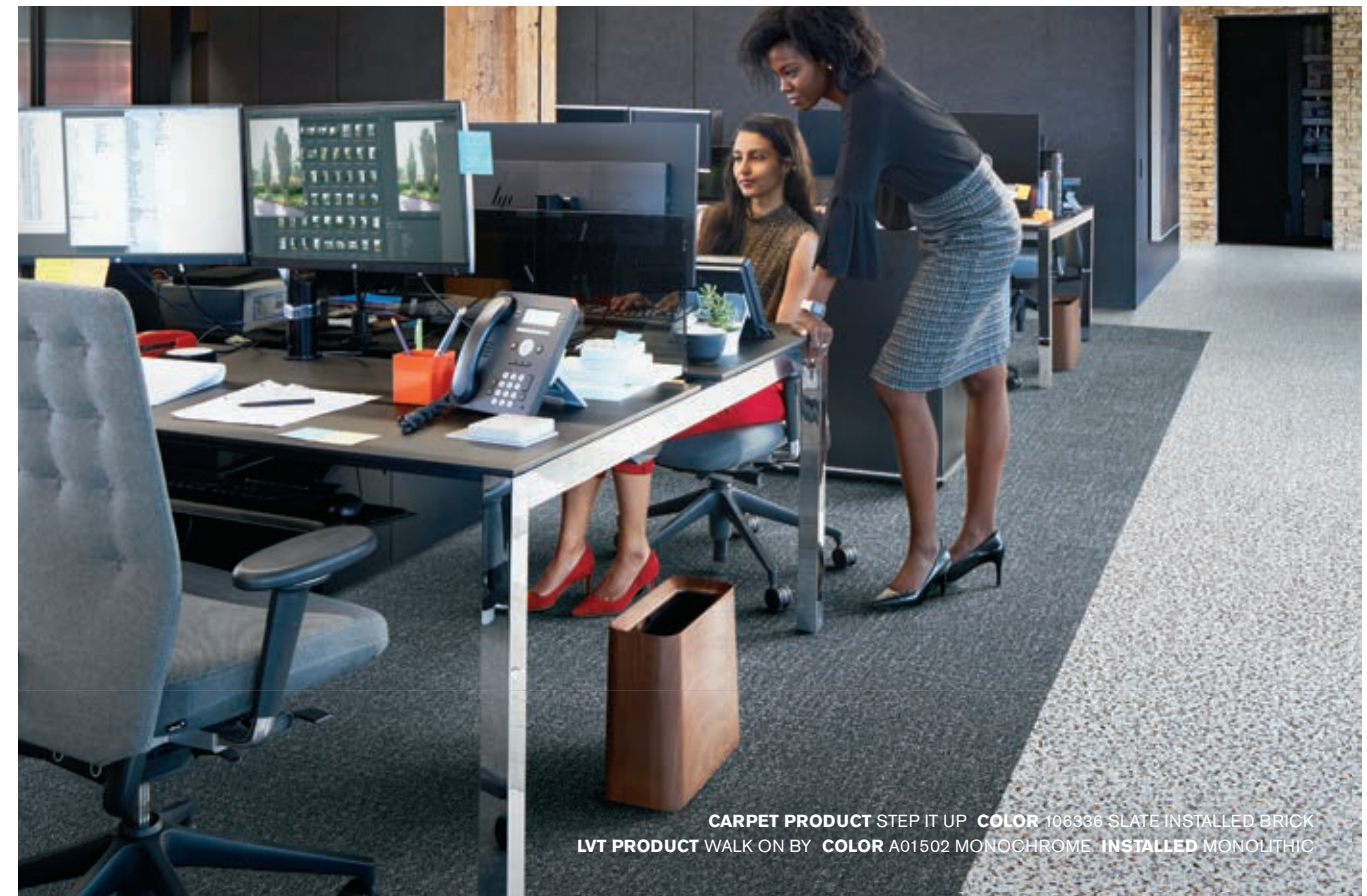
CARPET PRODUCT STEP IN TIME **COLOR** 106315 INDIGO
LVT PRODUCT WALK THE AISLE **COLOR** A01302 PUMICE
INSTALLED MONOLITHIC



CARPET PRODUCT STEP THIS WAY **COLOR** 106327 INDIGO
INSTALLED BRICK **LVT PRODUCT** WALK THE AISLE
COLOR A01304 CARBON **INSTALLED** MONOLITHIC
PRODUCT STEP ASIDE **COLOR** 106320 COAL **INSTALLED** ASHLAR



CARPET PRODUCT STEP ASIDE **COLOR** 106322 JET **INSTALLED** ASHLAR
LVT PRODUCT WALK OF LIFE **COLOR** A01204 CARBON **INSTALLED** MONOLITHIC



CARPET PRODUCT STEP IT UP **COLOR** 106336 SLATE **INSTALLED** BRICK
LVT PRODUCT WALK ON BY **COLOR** A01502 MONOCHROME **INSTALLED** MONOLITHIC



Integrated System.

Say goodbye to transition strips and doubling up. Our modular resilient floorings are made to work as a system with our modular carpet. The compatible size and height of our products allows you to integrate modular carpet for an inset rug or an adjacent field – no transition strip required. You'll avoid doubling up on materials and save money.

Real Flexibility.

Create a unique look that lasts. Interface modular resilient LVT makes it easy to extend the life of your floor. From simple maintenance like damp mopping to selectively replacing damaged tiles, your flooring investment will stand the test of time - beautifully and effortlessly.

Circular System.

Keep flooring out of the landfill. Our modular resilient LVT is produced with a controlled material stream so it can be reclaimed and recycled into our GlasBac™RE recycled content backing through our ReEntry™ program.

Noise Reduction.

Silence distractions. Interface is helping create +Positive spaces™ with our LVT with Sound Choice backing. Sound Choice is a specially formulated backing developed for superior noise reduction, offering you best-in-class performance for reduced impact sound and floor to floor sound transmission.

Interface Modular Resilient LVT
and Modular Carpet allow you to
seamlessly move from hard to soft
surfaces. No transition strip needed.



High Performance from Top to Bottom.

1. *Ceramor™ Coating.* Minimizes everyday scratching and scuffing.
2. *Wear Layer.* High quality layer enabling 15 years of resilience and performance.
3. *Print Film.* Provides outstanding visuals of natural materials and Interface innovative designs.
4. *Core Sheet.* Creates a thickness for a stronger core and reduces telegraphing from beneath.
5. *Fiberglass.* Adds dimensional stability and controlled flexibility.
6. *Core Sheet.* Creates a thickness for a stronger core and reduces telegraphing from beneath.
7. *Sound Choice™.* Provides comfort and superior acoustic performance.

Third Party Certification.

Carbon Neutral Floors. All Interface flooring sold globally is third party verified carbon neutral. We've taken a holistic approach to achieve carbon neutrality, first through reducing the carbon footprint of our products and then using carbon offsets for the remainder.

Environmental Product Declaration (EPD). Interface LVT products are covered by an EPD. An EPD provides a comprehensive statement of product ingredients and environmental impacts based upon life cycle assessment performed to ISO standards.

Sustainable Assessment. Interface LVT meets the certification standards of the NSF/ANSI 332 Sustainability Assessment for Resilient Floor Coverings. This standard evaluates the environmental impact of resilient floor covering for its entire lifecycle.

Indoor Air Quality. All Interface modular flooring products meet the highest standards for indoor air quality. Interface LVT is FloorScore® Certified, assuring very low emissions of VOCs.

