



STYLEBASICS



TAPER 5B111 in steel 11580

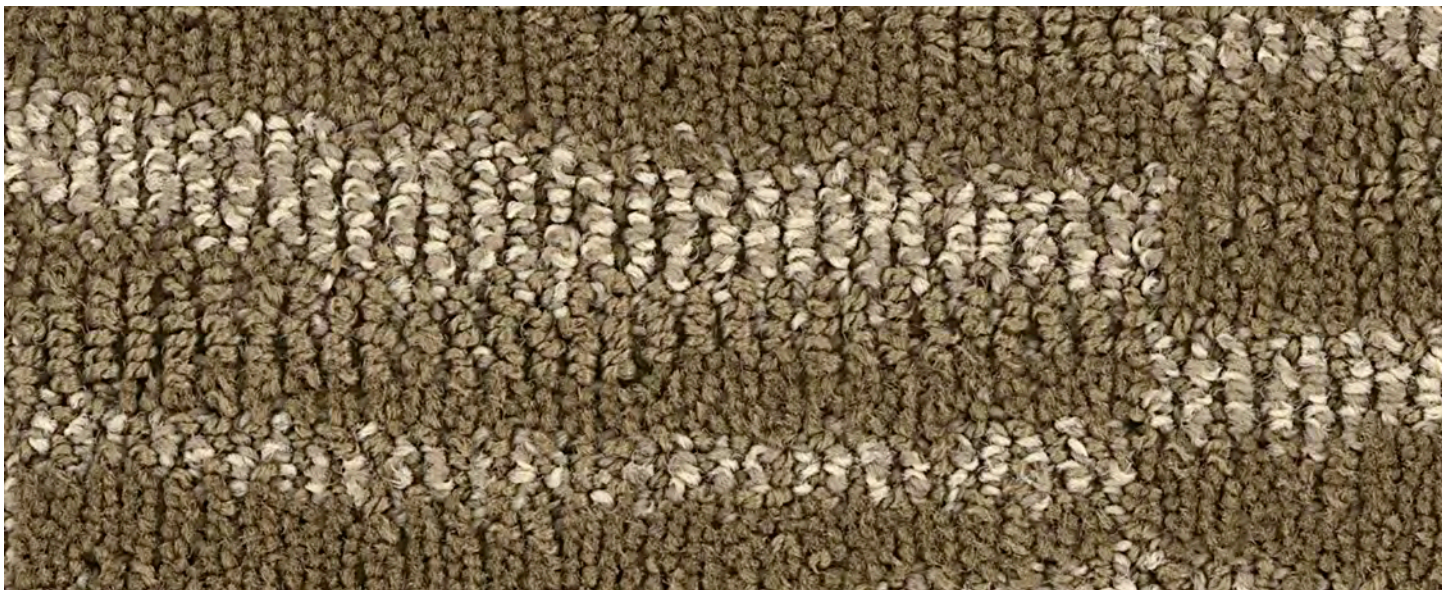
STYLE BASICS

Well dressed in varying scale and subtle color, these Style Basics keep selection simple. Two versatile patterns, Pleat and Taper, ground the design foundation in seven go-with-everything shades. Inspired by the fabric folds and narrowed lines of carefully constructed garments, this durable broadloom collection is made to be lived on, day and night.

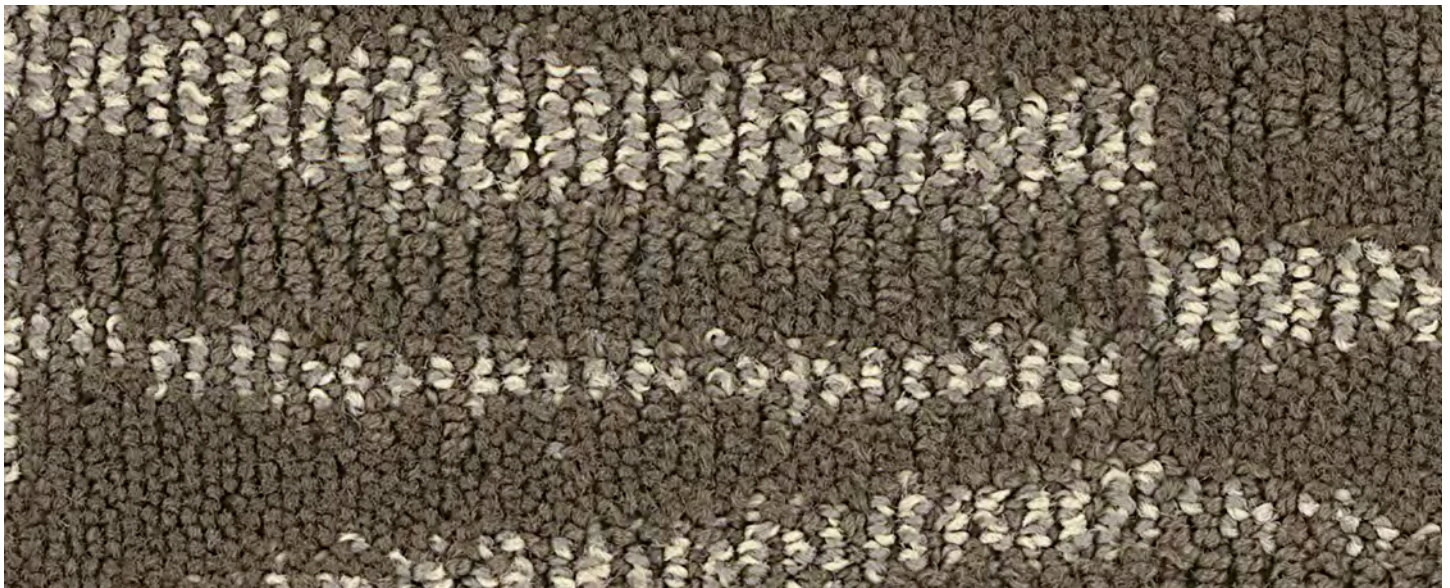


PLEAT 5B110 in steel 11580

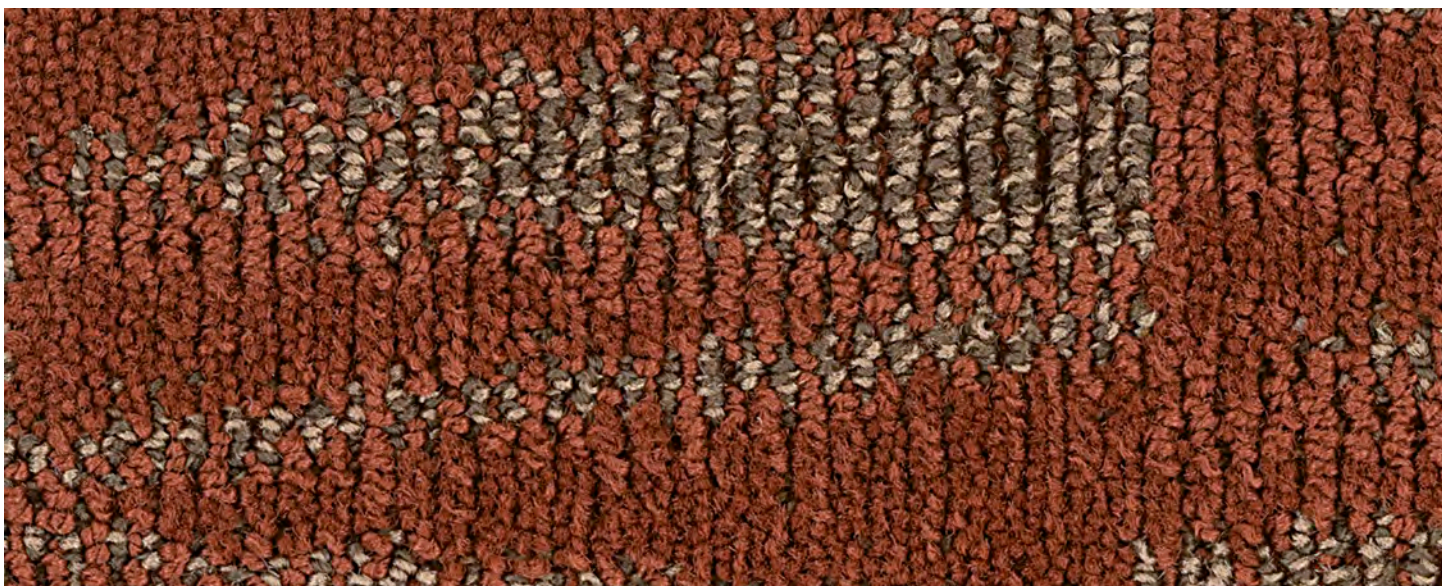
style pleat 5B110
style taper 5B111



wheat 11755



driftwood 11760



rust 11855



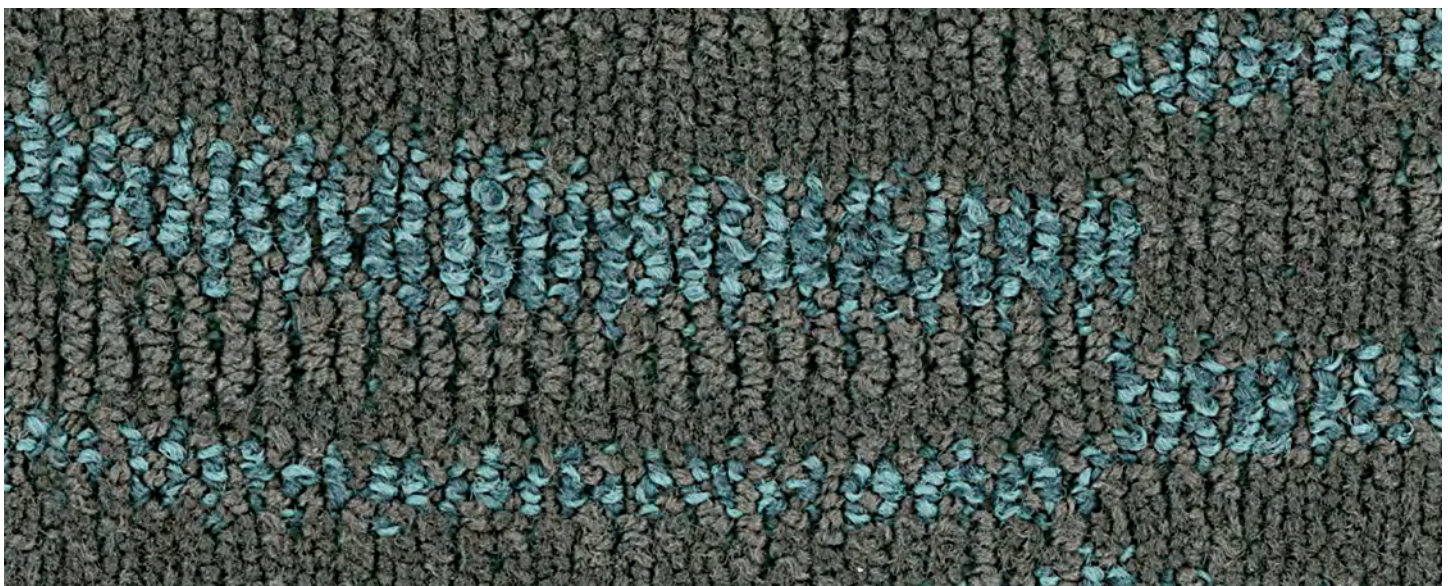
style pleat 5B110
style taper 5B111



ore 11230



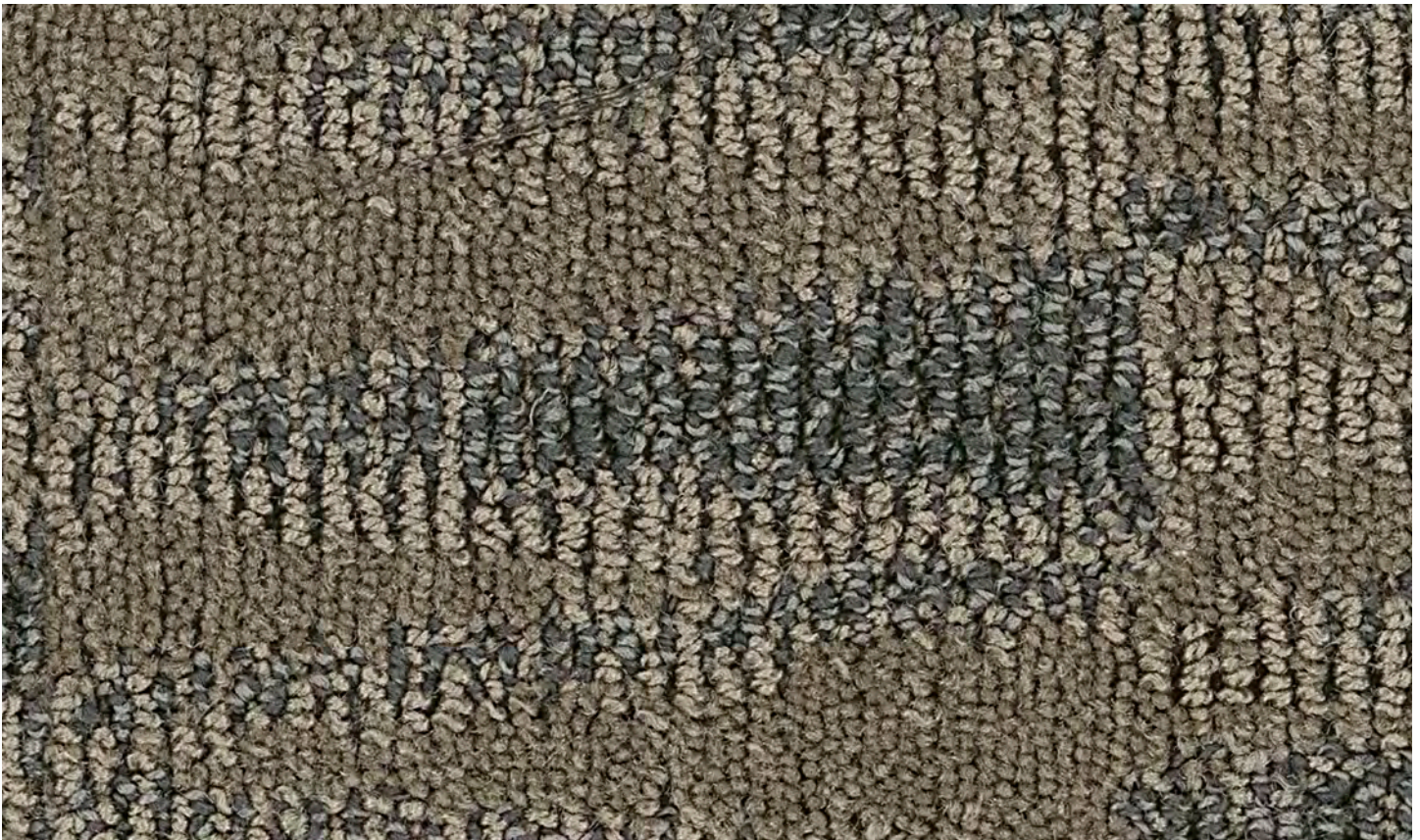
steel 11580



cerulean 11427



style **taper** 5B111



chambray 11510

style **pleat** 5B110



chambray 11510



pleat



taper



STYLEBASICS

specifications

style name
style number
construction
fiber
dye method

tufted weight
pattern repeat
gauge
stitches per inch
finished pile thickness
average density
product size
secondary backing
protective treatment(s)
radiant panel
nbs smoke
electrostatic propensity

warranty*

pleat
5B110
multi-level pattern cut / loop
eco+solution Q² nylon
100% solution dyed

US units	metric units
32.0 oz/yd ²	1,085 g/m ²
12" x 18"	30.48 cm X 45.72 cm
1/10	39.4 per 10 cm
12.0	47 per 10 cm
0.133 in.	3.38 mm
8,662 oz./yd ³	11.19 Kilotex
12 ft.	3.66 m

classicbac[®]
ssp[®] shaw soil protection
(ASTM E 648) class I
(ASTM E 662) less than 450
less than 3.5 kv,
built-in permanent
conductive fiber
10 year commercial limited

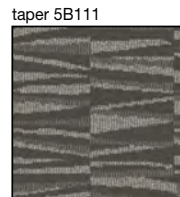
taper
5B111
multi-level pattern cut / loop
eco+solution Q² nylon
100% solution dyed

US units	metric units
32.0 oz/yd ²	1,085 g/m ²
12" x 12"	30.48 cm X 30.48 cm
1/10	39.4 per 10 cm
12.0	47 per 10 cm
0.133 in.	3.38 mm
8,662 oz./yd ³	11.19 Kilotex
12 ft.	3.66 m

classicbac[®]
ssp[®] shaw soil protection
(ASTM E 648) class I
(ASTM E 662) less than 450
less than 3.5 kv,
built-in permanent
conductive fiber
10 year commercial limited



steel 11580



steel 11580

a CJ610

b 5598D

a CJ610

b 5598D

*For detailed warranty information, please call 877.502.7429
For the most accurate information on recycled content
please visit shawcontract.com

recommended installation
guest rooms and small offices only

folder re-order 5B110-46C

Corporate Headquarters +1 800 257 7429 | +1 706 532 7984 | Atlanta +1 404 853 7429 | Bangalore +9180 6759 0334 x 0335 | Beijing +86 10 6568 588 | Chicago +1 312 467 1331
Dubai +971 4 313 2496 | Hong Kong +852 2623 0371 | Latin America (Miami) +1 305 827 5912 | London +44 207 961 4120 | Los Angeles +1 800 233 1614 | Melbourne +61 3 9939 8543
Mexico City +55 5010 7600 | Nantong +86 400 800 7429 | New York +1 212 953 7429 | Paris +33 1 55 27 39 07 | San Francisco +1 415 955 1920 | Santiago +562 2431 5000 x 550
São Paulo +55 11 3071 1702 | Shanghai +86 21 5258 9799 | Singapore +65 6733 1811 | Sydney +61 2 8065 1901

This carpet is manufactured and sold for floorcovering use only. Chair pads are recommended under office chairs with roller casters in order to protect appearance retention and to avoid premature wear. Walk off tiles are recommended at building entrances. As with all carpets, colors are subject to dye lot variations. Shading is the result of pile distortion and often is described as "watermarking." This does not constitute a manufacturing defect. To meet warranty requirements, approved adhesives and seam sealers must be used for glue-down application as outlined in the Shaw backing system brochure. Specifications are subject to nominal manufacturing variances. Material supply and/or manufacturing processes may necessitate specification changes without notice. This carpet is an exclusive design and may not be duplicated in any manner. Use of this design in the creation of another carpet design is also strictly prohibited.