



Interdeco™

Lichen Community

Bark Community Stone Community Micro Bloom II Macro Bloom II



Lichen Community

The multi-hued, multi-textured lichens that thrive on bark and rock formations once again inspire us in Lichen Community collection. The refined Micro Bloom and Macro Bloom palette includes warm and cool background textures with more neutral and tonal accent colors, which can help to define communal spaces and create unique large-scale installations.

Lichen Community embodies Mohawk Group's commitment to dematerialization and a more restorative, carbon neutral future. Leveraging our Pattern Perfect technology, the Lichen Community Collection is beyond carbon neutral. Boasting an additional 5% carbon offset for a net-positive impact, we continue our legacy of innovative products and technologies that will lead us to Net Zero carbon emissions by 2040.

Learn more at mohawkgroup.com



Cover: Bark Community, 858 Bark; Macro Bloom II, 856 Jewel Leaf Bark
Vertical Ashlar Installation



Lichen Community is a biophilic inspired collection of 12" x 36" modular carpet tile by Mohawk Group that utilizes our Pattern Perfect precision tufting platform to realize our commitment to responsible manufacturing practices. Through dematerialization and the reduction of waste, our carpet tile collections embody our sustainability efforts and support a better ecological community.



NEXT GENERATION CARPET FIBER

Duracolor Tricolor's new innovative modified-delta shape and optical core optimize color clarity, strength, stain resistance, and soil hiding and removal. As a result, Duracolor Tricolor delivers the ultimate synthesis of brilliant color and unsurpassed performance.



LIVING PRODUCT CERTIFICATION

Produced at our Living Site, Lichen Community is Net Positive for both carbon and water and achieves Petal Certification from the International Living Future Institute by complying with multiple imperatives of all seven petals.

EcoFlex™ ONE

CARPET TILE BACKING

Harnessing proven technology and advanced materials, EcoFlex™ ONE delivers an all-in-one solution for optimal flooring performance and reduced costs, while supporting greater wellness for people and planet.



SEAMLESS TRANSITIONS

Lichen Community does not require transition strips when used with any of our 4.5/5mm LVT products, reducing installation time and costs.

ADDITIONAL FEATURES

- Lifetime Duracolor Stain Warranty
- LEED, WELL & LBC Eligible
- Declare Red List Free
- CRI Green Label Plus
- NSF 140 Platinum





Bark Community, 858 Bark; Micro Bloom II & Macro Bloom II, 856 Jewel Leaf Bark
Vertical Ashlar Installation



Micro Bloom II, 945 Sky Shield Stone
Vertical Ashlar Installation



Stone Community, 949 Stone
Vertical Ashlar Installation



Macro Bloom II, 837 Moonglow Bark
Vertical Ashlar Installation



Lichen Community

Lichen Community's Micro Bloom and Macro Bloom styles and colorways can work together to create coordinated spaces that define purpose and place, or independently for larger landing areas, resulting in a uniquely textured installation.

COMMUNITY COLORWAYS



949 Stone Community

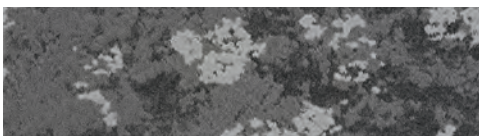


858 Bark Community

Note: Macro Bloom is a higher concentration of the accent color, whereas Micro Bloom is a lower concentration of the accent color.

Micro and Macro Bloom II

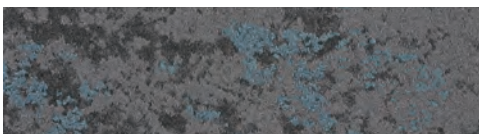
STONE COLORWAYS



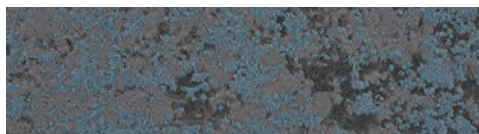
Micro Bloom II | 937 Map Rock Stone



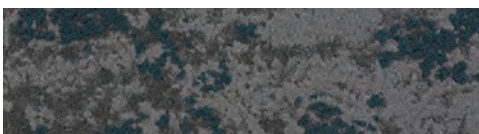
Macro Bloom II | 937 Map Rock Stone



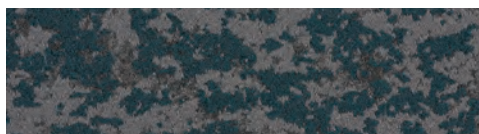
Micro Bloom II | 945 Sky Shield Stone



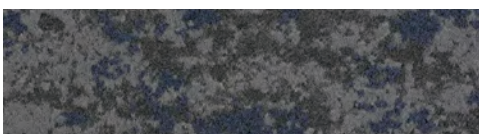
Macro Bloom II | 945 Sky Shield Stone



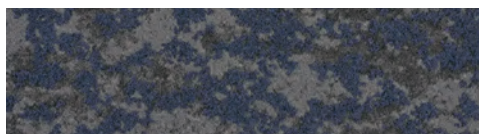
Micro Bloom II | 976 Drifted Root Stone



Macro Bloom II | 976 Drifted Root Stone

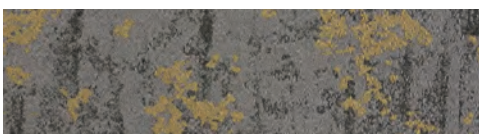


Micro Bloom II | 975 Felted Fringe Stone

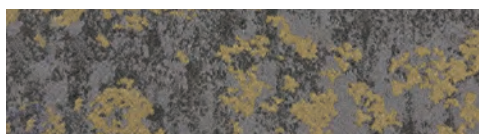


Macro Bloom II | 975 Felted Fringe Stone

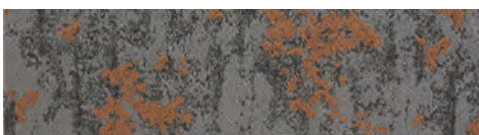
BARK COLORWAYS



Micro Bloom II | 831 Gold Dust Bark



Macro Bloom II | 831 Gold Dust Bark



Micro Bloom II | 832 Sunburst Bark



Macro Bloom II | 832 Sunburst Bark



Micro Bloom II | 847 Velvet Snow Bark



Macro Bloom II | 847 Velvet Snow Bark



Micro Bloom II | 837 Moonglow Bark



Macro Bloom II | 837 Moonglow Bark



Micro Bloom II | 856 Jewel Leaf Bark



Macro Bloom II | 856 Jewel Leaf Bark

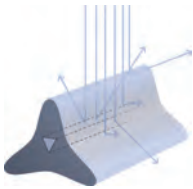
Just as lichen grows in communities with multiple varieties in the same biome, we humans thrive when joining together in work or play. Lichen Community supports collaboration by defining communal spaces through color and texture.







Delivering unsurpassed stain resistance, colorfastness, durability, color clarity and enhanced soil performance, Duracolor Tricor builds upon the trusted Duracolor promise with over 175 million yards installed since 1992.



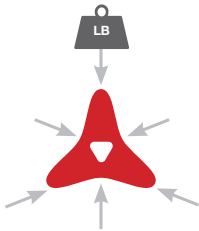
Soil Control

Our advanced Duracolor Tricor fiber optimizes soil hiding, soil removal and color clarity through its unique modified-delta shape and triangular hollow core. The result is carpet with brilliant color that retains its beauty between cleanings and requires less maintenance over time, saving facilities time and money.



Stain Resistance

To combat carpet staining—often regarded as the biggest challenge in maintaining commercial spaces—Duracolor Tricor utilizes the patented Duracolor process for permanent built-in stain resistance that won't wash or wear off. Up to 96% of the most common stain-causing substances can be easily cleaned with just water, saving facilities time and money. Duracolor Tricor's stain resistance also translates to less frequent replacement, for additional life-cycle savings.



Durability

Duracolor Tricor's fiber shape and hollow core deliver an innovative carpet that resists crushing for enhanced durability and longer life-cycles. In order to improve an already strong fiber, our engineers looked to load bearing structures such as bridges and trusses and discovered the power of the triangle, a shape that delivers ultimate load bearing performance. The innovative modified delta shape of each individual Duracolor Tricor fiber provides tremendous strength for enhanced durability.

Declare.

Sustainability

At Mohawk Group, we feel a profound sense of responsibility to minimize our ecological footprint, and we developed Duracolor Tricor with this responsibility in mind. It's part of our commitment to Believe in Better, helping advance our mission to build a more sustainable future.



Performance

Duracolor fiber has set the standard of high-performance commercial carpet since 1992. With enhanced soil hiding and removal capabilities, Duracolor Tricor builds upon a fiber already trusted to perform in demanding environments. When compared head to head to competitive nylon products, Duracolor Tricor delivers trusted performance.

EcoFlex™ ONE

EcoFlex™ ONE delivers an all-in-one solution for optimal flooring performance with reduced costs, while supporting greater wellness for people and planet.

EcoFlex™ ONE is a unified solution to the wide range of needs in your spaces. This advanced backing system improves every aspect of comfort and acoustics while eliminating moisture testing—all with a lighter environmental footprint that is carbon neutral plus an additional 5% offset. Tested and proven, EcoFlex™ ONE is the holistic solution for human-centric environments.

KEY FEATURES

- Better Acoustics
- Comfort & Safety
- Easily Installed
- NSF 140 Platinum
- Carbon Neutral +5%
- Limited Lifetime Warranty





Stone Community, 949 Stone; Micro Bloom II & Macro Bloom II, 945 Sky Shield Stone
Vertical Ashlar Installation



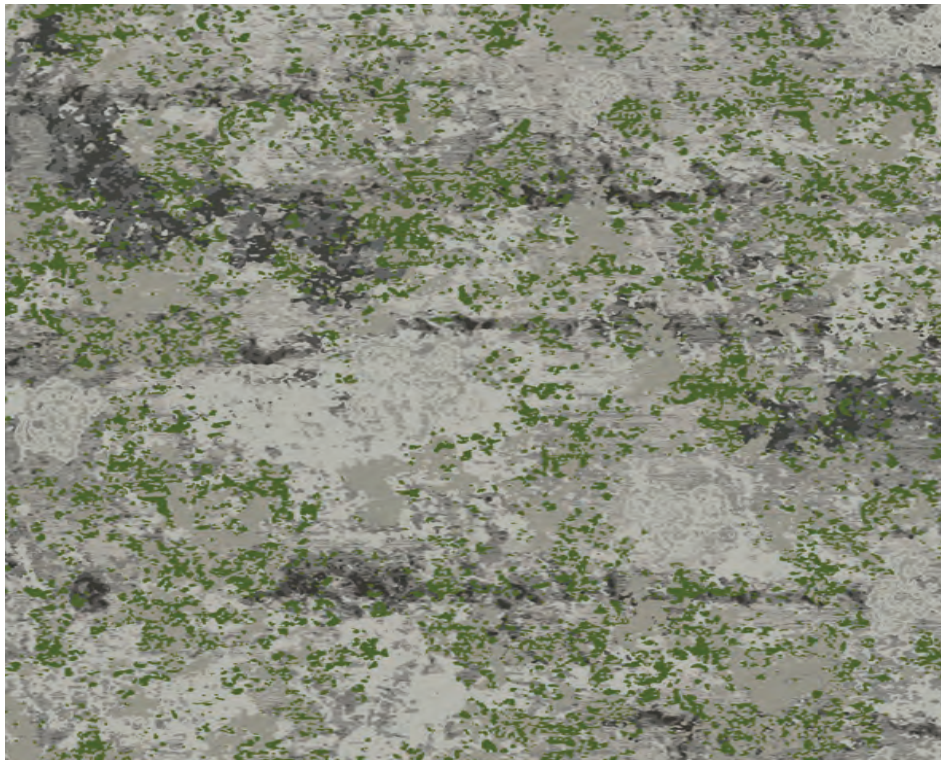
Pattern QTF90921
Construction Definity

Size Up to 15' W
Tufted Weight 60 oz.

Fiber Type Colorstrand™ SD
Dye Method Solution Dyed Nylon

Coordinating Area Rug and Broadloom

Our designers have developed a Definity pattern to complement the Lichen Community products. The tonal greys and taupes in this pattern will blend with all the Lichen Community colorways. This material is in stock and readily available to create area rugs or to use as broadloom. Definity's proprietary precision-sculpted technology creates stunning carpets and rugs for commercial interiors with incredible multilevel textures, enhanced definition, superior performance and unmatched sustainability.



Order Your Area Rug

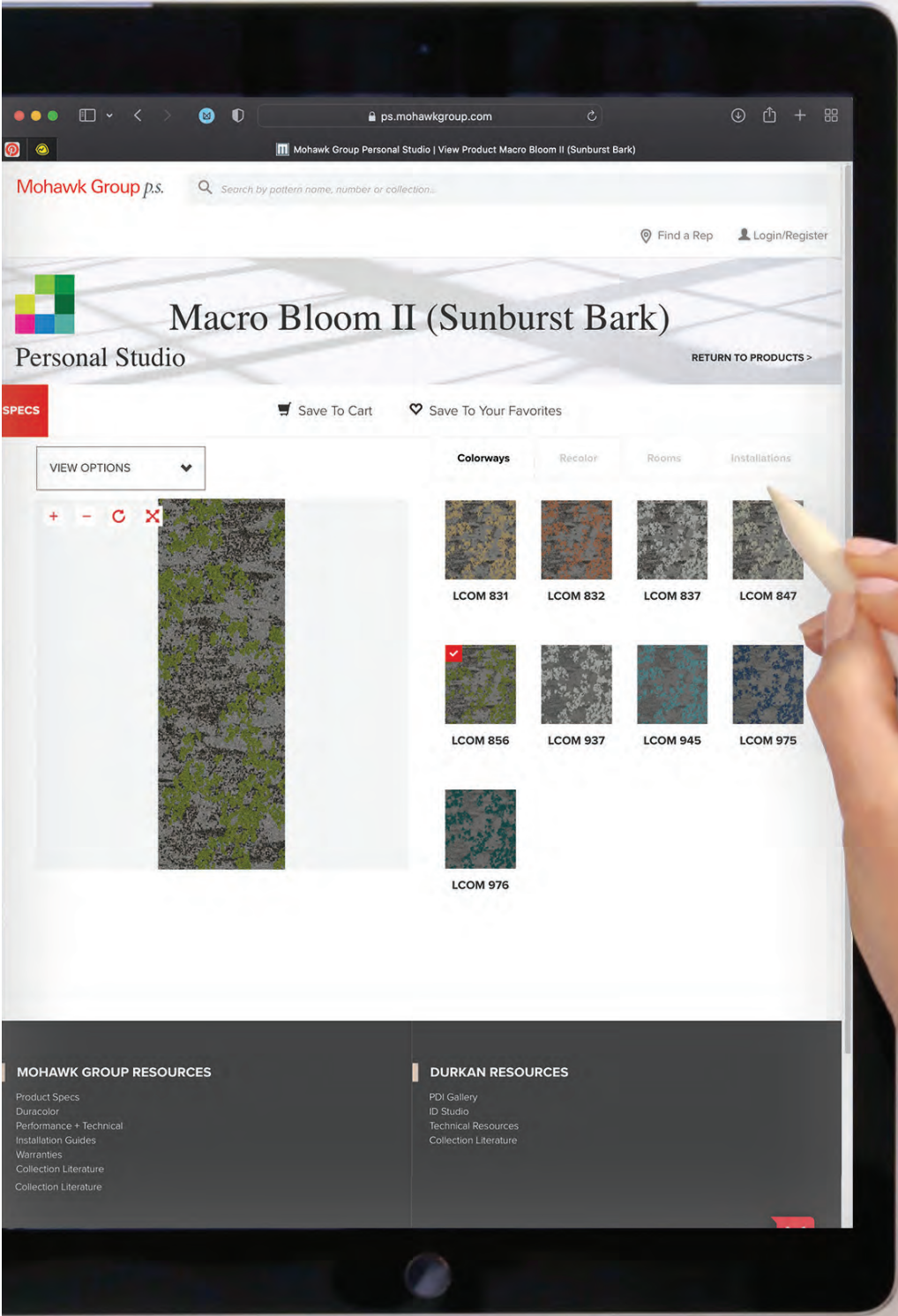
Ordering Made Easy

1. Select your pattern and color
2. Determine your rug size
3. Select your edge treatment and color
4. Determine if a rug underlayment is needed
5. Submit your order

Ready to Order?

Submit information in one of three ways below;

- Contact your Mohawk Group or Durkan Account Executive
- Email custom_cs@mohawkind.com



Mohawk Group *p.s.*

Search by pattern name, number or collection...

Find a Rep

Login/Register



Macro Bloom II (Sunburst Bark)

Personal Studio

[RETURN TO PRODUCTS >](#)

SPECS

Save To Cart

Save To Your Favorites

VIEW OPTIONS

+ - ↺ ✕



Colorways

Recolor

Rooms

Installations



LCOM 831



LCOM 832



LCOM 837



LCOM 847



LCOM 856



LCOM 937



LCOM 945



LCOM 975



LCOM 976

MOHAWK GROUP RESOURCES

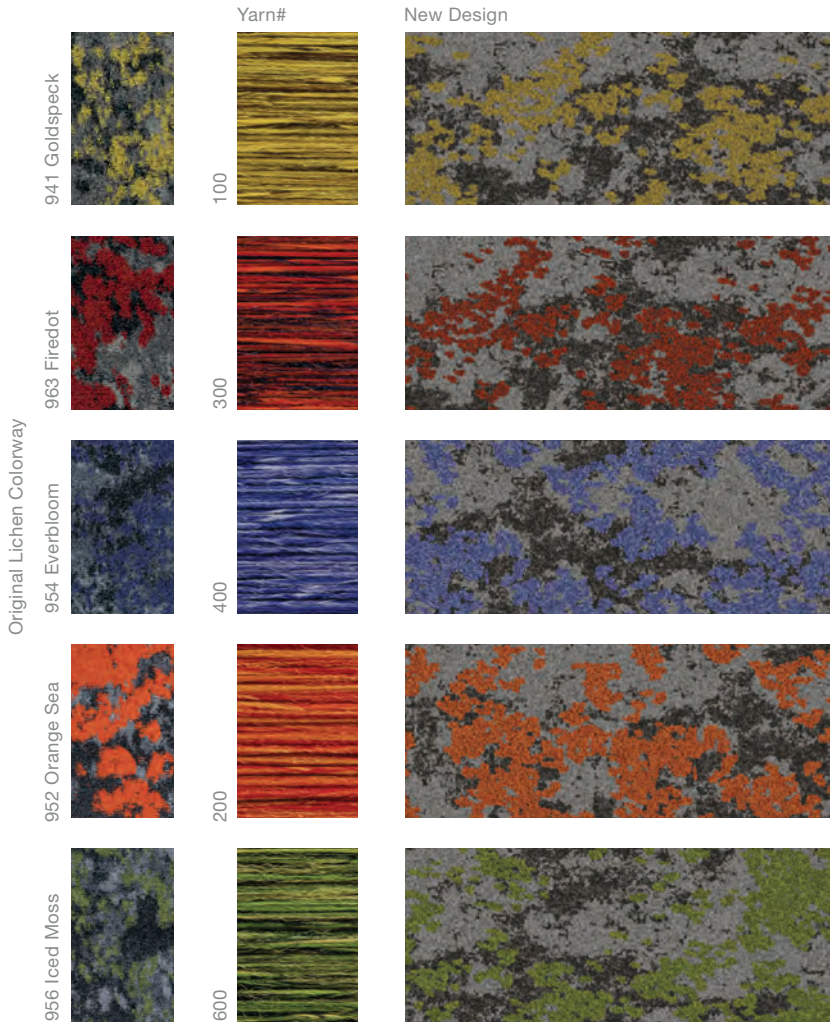
- Product Specs
- Duracolor
- Performance + Technical
- Installation Guides
- Warranties
- Collection Literature
- Collection Literature

DURKAN RESOURCES

- PDI Gallery
- ID Studio
- Technical Resources
- Collection Literature

Customization Made Easy

Your favorite accent colors from our original Lichen patterns are still available to you. Simply select Micro Bloom II or Macro Bloom II from Personal Studio and the appropriate Heathered Hues accent color to achieve these looks. With a 250 square yard minimum order, it's easy to customize any sized space.



Lichen Community's improved construction features a new visual and texture from the original Lichen Collection. These colors allow you to maintain the same design but should not be mixed with the original Lichen construction.

Mohawk Group | *Personal Studio™*

p.s. was developed to provide you with a tool that will allow you to streamline your efforts and respond quickly. Find the perfect color, visualize in a room, photorealistic simulations and the ability to save your favorite personalized products per project.



Jason F. McLennan is the creator of the Living Building Challenge, the most rigorous green building program in existence, as well as the creator of the Living Product Challenge and the CEO of McLennan Design. A design professional and thought-leader in sustainability, McLennan's groundbreaking initiatives have significantly influenced the green building movement, all in pursuit of a world that is socially just, culturally rich and ecologically restorative.



MCLENNAN DESIGN

Lichen Community is designed by Jason F. McLennan, the founder of the Living Product Challenge, in collaboration with Mohawk Group and his team at McLennan Design.

Inspired by assemblages of multi-hued, multi-textured lichens and their regenerative role in our ecosystem, the Lichen Community Collection is Carbon Neutral +, Declare Red List Free, and Living Product Challenge certified.



LIVING PRODUCT CHALLENGE is a framework for creating products that are healthy, inspirational and give back to the environment. A Living Product must have a net-positive impact ("handprint") on people and the environment, be socially responsible and be healthy and free of toxins.

Declare.™ | RED LIST FREE



Specifications

Stone Community (GT472)
Bark Community (GT473)
Macro Bloom II (GT474)
Micro Bloom II (GT475)

DESIGN

Size	12" x 36" (.3048 m x .9144 m)
Surface Appearance	Textured Patterned Multi-Colored Loop
Fiber Type	Duracolor® Tricolor Premium Nylon
Dye Method	Solution Dyed
Installation Methods	Monolithic / Monolithic Stepping / Plank Half-Lap / BasketWeave / Herringbone / Half-Lap / Brick Ashlar / Random
Colors Available	
Stone Community	1
Bark Community	1
Macro Bloom II	9
Micro Bloom II	9

PERFORMANCE

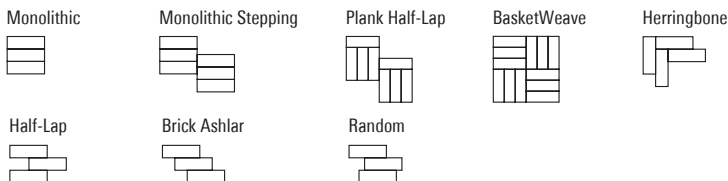
Construction	Tufted
Gauge	1/12" (47.00 rows per 10cm)
Stain Release Technology	Permanent, Built into the Fiber
Soil Release Technology	EcoSentry Soil Protection
Backing Material	EcoFlex™ ONE
Flammability	ASTM E 648 - Class 1 (Glue Down)
Smoke Density	ASTM E 662 - Less than 450
Static Propensity	AATCC - 134 Under 3.5 KV

SUSTAINABILITY

Certification	Living Product Challenge Petal Certified; Declare Red List Free
Indoor Air Quality	Green Label Plus Certified #1171
NSF 140	Platinum
Carbon	Net Positive Carbon (Neutral +5%)
Water	Net Positive Water (Neutral +5%)

SERVICE

Warranties	Lifetime Limited Carpet Tile Warranty, Lifetime Limited Duracolor® Stain Warranty, Lifetime Static
------------	--



Mohawk Group warrants its adhesives for the life of the original installation only when a Mohawk Group style (product) is installed. Mohawk's floor preparation procedures must be followed to ensure that the substrate has been prepared properly. Failure to use Mohawk Group adhesives or to follow Mohawk's floor preparation procedures will void all lifetime adhesive warranties. Please contact your local Sales Representative for installation guidelines.

These patterns contain inherent characteristics which may result in pattern run off and/or pattern appearance variations at the seams or tile edges (darker or lighter pattern lines). These characteristics are inherent in the patterns and are not manufacturing defects. Consideration to these characteristics should be given when selecting an installation method.

Chair pads are recommended under office chairs with roller casters to preserve appearance retention, act as a deterrent toward delamination and to prevent premature or accelerated wear. Walk-off tiles from the Tuff Stuff II Collection are recommended at entryways to reduce soiling.

Mohawk Group is providing this architect folder for the purpose of promoting our commercial business. This folder and its samples shall remain the property of Mohawk Group. Color may vary from dye lot to dye lot. Substitution of material may be made due to improved technology, supply limitations or other factors. The performance of this product is not affected by such variations.

For current and complete specifications please visit www.mohawkgroup.com



♻️ Produced with recycled materials





Mohawk Group

Mohawk Group
160 South Industrial Blvd.
Calhoun, GA. 30701
800.554.6637
mohawkgroup.com

MG712 24PG BROCHR LT

Bark Community

Collection	Lichen Community
Style Name	Bark Community
Style Number	GT473
Product Type	Carpet Tile
Size	12" X 36"
Construction	Tufted
Installation	Monolithic, Half Lap, Brick Ashlar, Basket



Feature	Description
Backing Material	EcoFlex ONE
Fiber Type	Duracolor® Tricor Premium Nylon
Dye Method	Solution Dyed
Installation Methods	Monolithic, Half Lap, Brick Ashlar, Basket
Stitches per Inch	9.4 (37.01 per 10cm)
Density	6496
Tufted Pile Weight	24.00 oz/yd ² (814 g/m ²)
Surface Texture	Textured Patterned Multi-Colored Loop

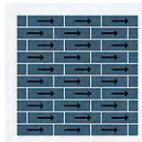
Recommended Installation Methods



Basket Weave



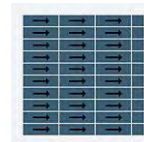
Brick Ashlar



Half Lap



Herringbone



Monolithic



Monolithic Stepping

Colorways



Bark

Color code: 858
Style number: GT473

Performance

Feature	Description
Gauge	1/12 (47.00 rows per 10cm)
Stain Release Technology	Pass
Foot Traffic Recommendation TARR	Heavy
Flammability	ASTM E 648 Class 1 (Glue Down)
Smoke Density	ASTM E 662 Less than 450
Static Propensity	AATCC-134 Under 3.5 KV
Soil Release Technology	EcoSentry Soil Protection

Sustainability

Feature	Description
Beyond Carbon Neutral	This product is 100% carbon neutral plus an additional 5% offset
Carbon Handprint	-0.033 kg CO2e/ft2
Embodied Carbon	0.65 kg CO2e/ft2
NSF 140	EcoFlex ONE - NSF 140 Platinum
Indoor Air Quality	GLP 1171
Red List Free	False
Declare Label	Nylon Modular Carpet on EcoFlex ONE Backing
Take Back Program	ReCover Program
Health Product Declaration	HPD 2.1 EcoFlex ONE Gold - 1000 ppm
LEED Credit Potential	LEED Eligible

Warranties

Lifetime Limited Carpet Tile Warranty, Lifetime Limited Duracolor Stain Warranty, Lifetime Static

Stone Community

Collection	Lichen Community
Style Name	Stone Community
Style Number	GT472
Product Type	Carpet Tile
Size	12" X 36"
Construction	Tufted
Installation	Monolithic, Half Lap, Brick Ashlar, Basket



Feature	Description
Backing Material	EcoFlex ONE
Fiber Type	Duracolor® Tricor Premium Nylon
Dye Method	Solution Dyed
Installation Methods	Monolithic, Half Lap, Brick Ashlar, Basket
Stitches per Inch	10.1 (39.76 per 10cm)
Density	6595
Tufted Pile Weight	24.00 oz/yd2 (814 g/m2)
Surface Texture	Textured Patterned Multi-Colored Loop

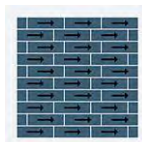
Recommended Installation Methods



Basket Weave



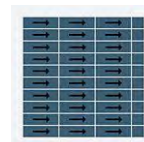
Brick Ashlar



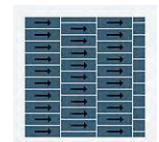
Half Lap



Herringbone



Monolithic



Monolithic Stepping

Colorways



Stone

Color code: 949
Style number: GT472

Performance

Feature	Description
Gauge	1/12 (47.00 rows per 10cm)
Stain Release Technology	Pass
Foot Traffic Recommendation TARR	Heavy
Flammability	ASTM E 648 Class 1 (Glue Down)
Smoke Density	ASTM E 662 Less than 450
Static Propensity	AATCC-134 Under 3.5 KV
Soil Release Technology	EcoSentry Soil Protection



Sustainability

Feature	Description
Beyond Carbon Neutral	This product is 100% carbon neutral plus an additional 5% offset
Carbon Handprint	-0.033 kg CO2e/ft2
Embodied Carbon	0.65 kg CO2e/ft2
NSF 140	EcoFlex ONE - NSF 140 Platinum
Indoor Air Quality	GLP 1171
Red List Free	True
Declare Label	Nylon Modular Carpet on EcoFlex ONE Backing
Take Back Program	ReCover Program
Health Product Declaration	HPD 2.1 EcoFlex ONE Gold - 1000 ppm
LEED Credit Potential	LEED Eligible

Warranties

Lifetime Limited Carpet Tile Warranty, Lifetime Limited Duracolor Stain Warranty, Lifetime Static

Micro Bloom II

Collection	Lichen Community
Style Name	Micro Bloom II
Style Number	GT475
Product Type	Carpet Tile
Size	12" X 36"
Construction	Tufted
Installation	Monolithic, Half Lap, Brick Ashlar, Basket



Feature	Description
Backing Material	EcoFlex ONE
Fiber Type	Duracolor® Tricor Premium Nylon
Dye Method	Solution Dyed
Installation Methods	Monolithic, Half Lap, Brick Ashlar, Basket
Stitches per Inch	9.5 (37.4 per 10cm)
Density	3963
Tufted Pile Weight	24.00 oz/yd ² (814 g/m ²)
Surface Texture	Textured Patterned Multi-Colored Loop

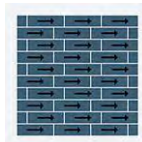
Recommended Installation Methods



Basket Weave



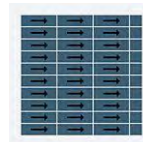
Brick Ashlar



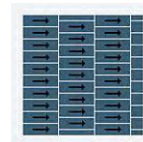
Half Lap



Herringbone



Monolithic



Monolithic Stepping

Colorways



Gold Dust Bark

Color code: 831
Style number: GT475



Sunburst Bark

Color code: 832
Style number: GT475



Moonglow Bark

Color code: 837
Style number: GT475



Velvet Snow Bark

Color code: 847
Style number: GT475



Jewel Leaf Bark

Color code: 856
Style number: GT475



Map Rock Stone

Color code: 937
Style number: GT475



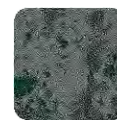
Sky Shield Stone

Color code: 945
Style number: GT475



Felted Fringe Stone

Color code: 975
Style number: GT475



Drifted Root Stone

Color code: 976
Style number: GT475

Performance

Feature	Description
Gauge	1/12 (47.00 rows per 10cm)
Stain Release Technology	Pass
Foot Traffic Recommendation TARR	Heavy
Flammability	ASTM E 648 Class 1 (Glue Down)
Smoke Density	ASTM E 662 Less than 450
Static Propensity	AATCC-134 Under 3.5 KV
Soil Release Technology	EcoSentry Soil Protection



Sustainability

Feature	Description
Embodied Carbon	0.65
Beyond Carbon Neutral	-0.033
NSF 140	EcoFlex ONE - NSF 140 Platinum
Red List Free	True
Declare Label	Nylon Modular Carpet on EcoFlex ONE Backing
Take Back Program	ReCover Program
Health Product Declaration	HPD 2.1 EcoFlex ONE Gold - 1000 ppm
LEED Credit Potential	LEED Eligible

Warranties

Lifetime Limited Carpet Tile Warranty, Lifetime Limited Duracolor Stain Warranty, Lifetime Static

Macro Bloom II

Collection	Lichen Community
Style Name	Macro Bloom II
Style Number	GT474
Product Type	Carpet Tile
Size	12" X 36"
Construction	Tufted
Installation	Monolithic, Half Lap, Brick Ashlar, Basket



Feature	Description
Backing Material	EcoFlex ONE
Fiber Type	Duracolor® Tricor Premium Nylon
Dye Method	Solution Dyed
Installation Methods	Monolithic, Half Lap, Brick Ashlar, Basket
Stitches per Inch	9.5 (37.4 per 10cm)
Density	5769
Tufted Pile Weight	25.00 oz/yd ² (848 g/m ²)
Surface Texture	Textured Patterned Multi-Colored Loop

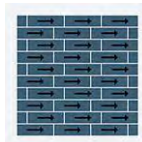
Recommended Installation Methods



Basket Weave



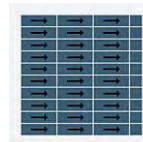
Brick Ashlar



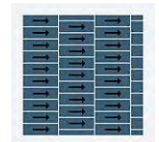
Half Lap



Herringbone



Monolithic



Monolithic Stepping

Colorways



Gold Dust Bark

Color code: 831
Style number: GT474



Sunburst Bark

Color code: 832
Style number: GT474



Moonglow Bark

Color code: 837
Style number: GT474



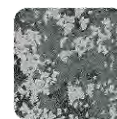
Velvet Snow Bark

Color code: 847
Style number: GT474



Jewel Leaf Bark

Color code: 856
Style number: GT474



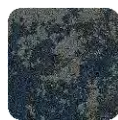
Map Rock Stone

Color code: 937
Style number: GT474



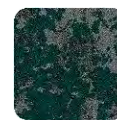
Sky Shield Stone

Color code: 945
Style number: GT474



Felted Fringe Stone

Color code: 975
Style number: GT474



Drifted Root Stone

Color code: 976
Style number: GT474

Performance

Feature	Description
Gauge	1/12 (47.00 rows per 10cm)
Stain Release Technology	Pass
Foot Traffic Recommendation TARR	Heavy
Flammability	ASTM E 648 Class 1 (Glue Down)
Smoke Density	ASTM E 662 Less than 450
Static Propensity	AATCC-134 Under 3.5 KV
Soil Release Technology	EcoSentry Soil Protection



Sustainability

Feature	Description
Beyond Carbon Neutral	This product is 100% carbon neutral plus an additional 5% offset
Carbon Handprint	-0.033 kg CO2e/ft2
Embodied Carbon	0.65 kg CO2e/ft2
NSF 140	EcoFlex ONE - NSF 140 Platinum
Red List Free	False
Declare Label	Nylon Modular Carpet on EcoFlex ONE Backing
Mindful Materials	Participates in Mindful Materials Library
Take Back Program	ReCover Program
Health Product Declaration	HPD 2.1 EcoFlex ONE Gold - 1000 ppm
LEED Credit Potential	LEED Eligible

Warranties

Lifetime Limited Carpet Tile Warranty, Lifetime Limited Duracolor Stain Warranty, Lifetime Static