



Interdeco™

Expedition

Hydrosphere Ecosphere Lithosphere

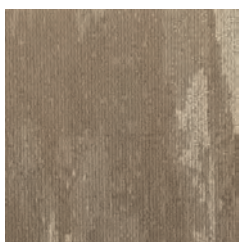




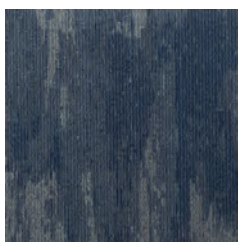
Ecosphere 739 Glacier (Monolithic Installation)
Opposite: Hydrosphere 739 Glacier (Vertical Ashlar Installation)
Cover: Lithosphere 739 Glacier (Multi-Directional Installation)



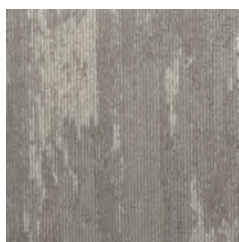
Hydrosphere COLORWAYS



138 Sulpher



576 Lagoon



739 Glacier



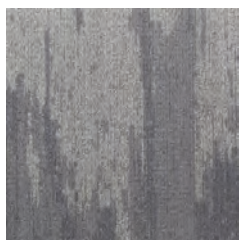
856 Sediment



869 Alpine



949 Fossil



955 Coastal



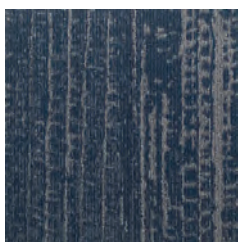
978 Mineral



Ecosphere COLORWAYS



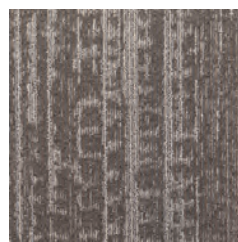
138 Sulpher



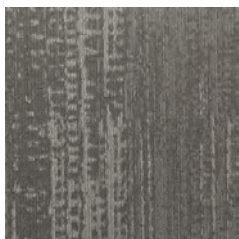
576 Lagoon



739 Glacier



856 Sediment



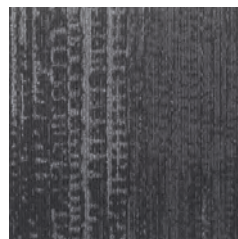
869 Alpine



949 Fossil



955 Coastal



978 Mineral

Lithosphere COLORWAYS



138 Sulpher



576 Lagoon



739 Glacier



856 Sediment



869 Alpine



949 Fossil



955 Coastal



978 Mineral



Lithosphere 739 Glacier (Multi-Directional Installation)



Hydrosphere 955 Coastal, Better Together 652 Mythical (Vertical Ashlar Installation)



Living Product Challenge

Mohawk Group is proud to do our part to conserve resources and preserve the environment. Our designers and engineers seek to develop products that are healthy and free of toxins, socially responsible and respectful of worker's rights, and positively impact the environment.

Produced at our Living Site, Expedition is Net Positive for both carbon and water, and achieves Living Petal Certification from the International Living Future Institute by complying with multiple imperatives of all seven petals, listed below.



Living Product Challenge 2.0

Mohawk Group
Nylon Modular Carpet on EcoFlex NXT Backing

Place
3/3

Water
2/2

Energy
1/2

Health
3/3

Materials
3/4

Equity
3/4

Beauty
2/2

Petal Certified

17/20

Imperatives Achieved

Petals Met: Place, Water, Health & Happiness, Beauty

Life Expectancy: 15 Years

End of Life Options: Take Back Program (ReCover)

Recycled Content: Minimum 35% Pre-Consumer

Functional Unit: 1 sq. meter

Manufacturing Location: Glasgow, VA, USA

Carbon Impact

- Yarn
- Polypropylene
- Manufacturing Electricity
- Stabilizer Serum
- ABS Backing
- Other
- Handprint

11.18 kg CO₂ eq

Net Positive

Water Impact

- Yarn
- Water Used During Manufacturing
- Stabilizer Serum
- ABS Backing
- Polypropylene
- Other
- Handprint

0.0287 m³ H₂O

Net Positive

Energy Impact

- Yarn
- Polypropylene
- ABS Backing
- Primary
- Manufacturing Electricity
- Other

4.43 kg oil eq

Waste Impact

- Diverted
- Landfill

WASTE

Declare.

Red List Free
 IBC Compliant
 Diverted

95% Assessed

Coating: Recycled Calcium Carbonate, Polypropylene Copolymer, Recycled Calcium Carbonate, Butadiene Acrylate, 2, 5-Furandione, Polymer with Ethane and 1-Propane, Magnesium Carbonate, Polypropylene, Silica, N,N-Bis(2-Hydroxyethyl)alkyl (C12-C15) Amine, Sodium Dodecyl Diphenyl Ester Sulfonate, Black Pigment, Tris(2,4-dibutylphenyl) Phosphate, Polyolefin, Sodium Sulfate, Ammonium Lauryl Sulfate, Faced Nylon 6, Nylon 6,6 Backing: Polyester, Recycled Glass, Starch, Polymer with 2-Propanoic Acid, Graft, Sodium Salt, Polypropylene, Black Pigment, Topical: 2-Propanoic acid, 2-methyl-, butyl ester, Polymer with butyl 2-propanoate and methyl 2-methyl-2-propanoate, 4-(4-hydroxyphenyl)phenylsulfone-formaldehyde-epi-glycidylsulfonic acid copolymer, Decyl Glucoside, Decosonic Acid, Phosphoric Acid, Dodecyl Ester, Potassium Salt, Sodium (C14-16) Olefin Sulfonate, Various Colorants and Dyes

Verified By: WAP Sustainability

MHK-LP008
EXP. 06/12/2022

INTERNATIONAL LIVING FUTURE INSTITUTE™ living-future.org/pc



PLACE PETAL
Responsible & Habitat Impact



ENERGY PETAL
Energy Footprint



WATER PETAL
Water Footprint & Net Positive Water



HEALTH & HAPPINESS PETAL
The Red List, Transparent Material Health, Human Thriving



MATERIALS PETAL
Responsible Industry, Net Positive Carbon



EQUITY PETAL
Ethical Supply Chain, Equitable Investment, Social Co-Benefits



BEAUTY PETAL
Beauty + Spirit, Inspiration & Education

Mohawk Group is proud to be the first manufacturer to create a Living Site, a facility dedicated to the future and bettering our planet.



Duracolor® Tricor FIBER

Building upon the trusted Duracolor promise with over 100 million yards installed since 1992, new Duracolor Tricor delivers unsurpassed stain resistance, colorfastness, durability, color clarity and enhanced soil performance. Carpet made with Duracolor® Tricor is recyclable, easy to maintain and features inherent stain resistance with water-only stain removal.



FOREVER STAIN FREE

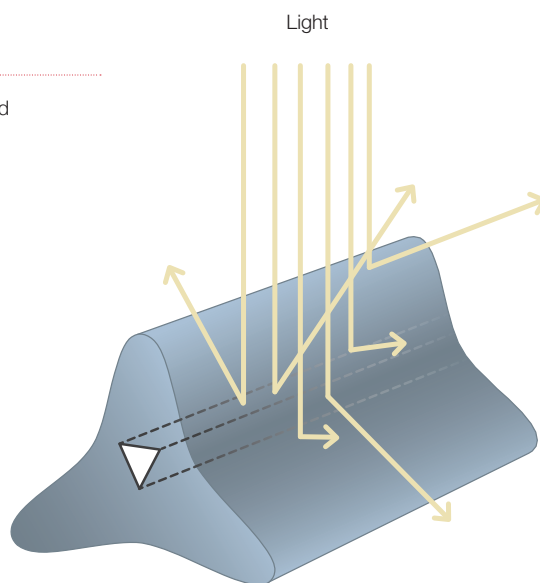
- The high-performance shape of the modified delta improves resilience and reduces surface wear of carpet
- Duracolor® Tricor Fiber has a negative charge that repels 99% of negatively charged, common staining substances
- Single Triangular Hole provides the best soil hiding capability and controlled light diffusion for clearer, brighter colors
- 96% of all common stains removed with just water
- Passes AATCC Test Method 175 combined with pre-abrasion meeting GSA requirements for stain resistance

FOREVER SUSTAINABLE

- Made with a minimum of 70% recycled content**
- No Chemicals required: 96% of all common stains clean with just water
- Declare Red List Free: Duracolor fiber is Declare Red List Free in accordance with the Living Building Challenge
- Lasts Longer: Product life is extended, reducing the impact to your bottom line and to the environment
- Recyclable through Mohawk's ReCover Program

FOREVER BEAUTIFUL

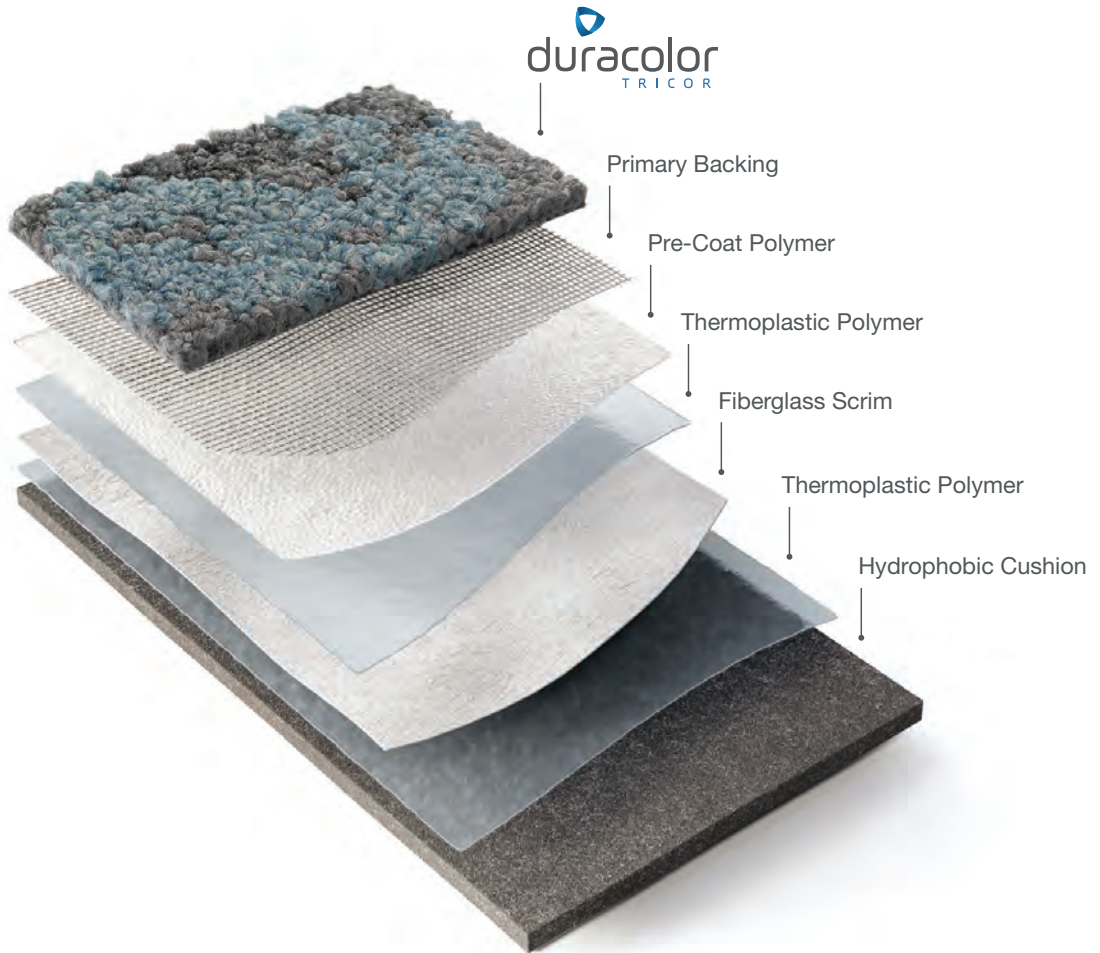
- Unsurpassed colorfastness to light and atmospheric contaminants so colors won't fade
- Unmatched design flexibility without compromising color retention or stain resistance



The shape and placement of the fiber's central hollow core delivers optimal light refraction while preserving color clarity.

* See Mohawk Group official warranty documents for further details at mohawkgroup.com

**Recycled content claim third party verified by SCS Global Services



EcoFlex™ ONE

ALL-IN-ONE FLOORING SOLUTION

Every element in the EcoFlex™ ONE construction has purpose, and combined they form the industry's leading modular carpet solution. The hydrophobic PET cushion, backing layers, and Duracolor Tricolor fiber are engineered with your end-goals in mind: to optimize your investment, be sustainably made, and provide a better occupant experience.

KEY FEATURES

- Better Acoustics
- Enhanced Comfort & Safety
- Worry-Free Installation
- Simplified Maintenance
- NSF 140 Platinum
- Carbon Neutral +5%
- Adhesive Free
- Limited Lifetime Warranty

EcoFlex™ ONE is a unified solution to the wide range of needs in your spaces. This advanced backing system improves every aspect of comfort and acoustics while eliminating moisture testing—all with a lighter environmental footprint that is carbon neutral plus an additional 5% offset. Tested and proven, EcoFlex™ ONE is the holistic solution for human-centric environments.

EcoFlex™ ONE works with the FlexLok tab system to virtually eliminate harmful VOC's with an easy-to-use, odorless dry installation that replaces traditional wet spread adhesive methods.



Elemental Edges FINISHING ACCESSORIES



At Mohawk Group we believe in providing project solutions that are easy to select and readily available. Elemental Edges is a complete portfolio of free-to-ship accessories for all your flooring installation and finishing needs. The program is offered in 14 QuickShip colors that coordinate perfectly with our full suite of soft and hard surface products.

Explore more by visiting mohawkgroup.com/products/elemental-edges



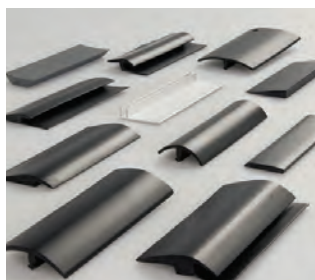
Wall Base



Seamlessly coordinate your wall base and Mohawk Group floor covering from our variety of QuickShip wall base offerings.

AVAILABLE IN

- Rubber
- Vinyl
- 4" or 6" in height
- Cove or straight
- 4' lengths or 96' & 120' rolls
- 1/8" gauge
- .080" gauge (4" Cove vinyl)



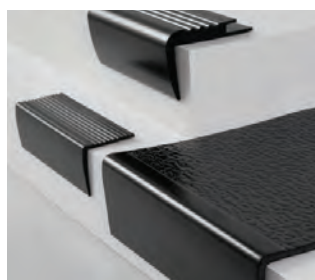
Installation Accessories



Add a functional finishing touch to your coordinated color scheme with Mohawk Group installation accessories. Proprietary Rubber formulations are shrink and crack-proof, and won't fade, even in direct sunlight.

CHOOSE FROM

- Universal Transitions
- Reducers
- Adaptors
- Cove Stick



Stair Solutions



Specify 12.5" regular tread or 20" integrated tread/riser, available in 48" and 72" lengths. Round and hammered finishes are available with standard square nose. All profiles are available with or without visually impaired strips.

CHOOSE FROM

- Stair Treads
- Resilient Landing Tiles
- Risers
- Nosings



Architectural Wall Base

Complement your space with the rich detail of Elemental Edges Architectural Wall Base, offered in a variety of designs, sizes and running line colors. Superior performance and durability allowing your project finishes to remain remarkable.

AVAILABLE IN

- 8 design profiles
- 14 color-coordinated options

Specifications

Hydrosphere GT332
 Ecosphere GT333
 Lithosphere GT334

DESIGN

Size	24" x 24" (.6096m x .6096m)
Surface Appearance	Textured Patterned Loop
Fiber Type	Duracolor® Tricolor Premium Nylon
Dye Method	Solution Dyed
Installation Methods	Quarter Turn / Monolithic / Brick Ashlar / Vertical Ashlar / Multi-Directional
Colors Available	8

PERFORMANCE

Construction	Tufted
Gauge	1/12" (47.00 rows per 10cm)
Stain Release Technology	Permanent, Built into the Fiber
GSA Stain Release Rating	Passes
Soil Release Technology	EcoSentry Soil Protection
Backing Material	EcoFlex™ ONE
Flammability	ASTM E 648 - Class 1 (Glue Down)
Smoke Density	ASTM E 662 - Less than 450
Static Propensity	AATCC - 134 Under 3.5 KV

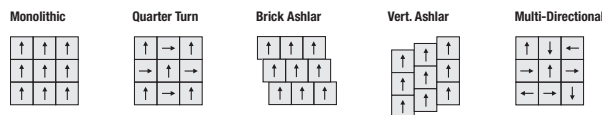
SUSTAINABILITY

Certification	Living Product Challenge Petal Certified; Declared Red List Free
Indoor Air Quality	Green Label Plus Certified #1171
NSF 140	Platinum
Carbon	Net Positive Carbon (Neutral +5%)
Water	Net Positive Water (Neutral +5%)

SERVICE

Warranties	Lifetime Limited Carpet Tile Warranty, Lifetime Duracolor Stain Warranty, Lifetime Static
------------	---

Installation Instructions:



Mohawk Group warrants its adhesives for the life of the original installation only when a Mohawk Group style (product) is installed. Mohawk's floor preparation procedures must be followed to ensure that the substrate has been prepared properly. Failure to use Mohawk Group adhesives or to follow Mohawk's floor preparation procedures will void all lifetime adhesive warranties. Please contact your local Sales Representative for installation guidelines.

These patterns contain inherent characteristics which may result in pattern run off and/or pattern appearance variations at the seams or tile edges (darker or lighter pattern lines). These characteristics are inherent in the patterns and are not manufacturing defects. Consideration to these characteristics should be given when selecting an installation method.

Chair pads are recommended under office chairs with roller casters to preserve appearance retention, act as a deterrent toward delamination and to prevent premature or accelerated wear. Walk-off tiles from the Tuff Stuff II Collection are recommended at entryways to reduce soiling.

Duracolor by Mohawk Stain Resistant System passes AATCC Test Method 175 combined with pre-abrasion meeting GSA requirements for stain resistance. Under GSA requirements stain resistant carpets must score no less than 8.0 (10.0 is best) on the AATCC Red 40 Stain Scale. Carpet samples must first be exposed to 100 revolutions of the

Taber abrader (1,000-gram weight per H-18 wheel) and then the abraded area must be stain tested using AATCC tested using AATCC test method 175.

Mohawk Group is providing this architect folder for the purpose of promoting our commercial business. This folder and its samples shall remain the property of Mohawk Group. Color may vary from dye lot to dye lot. Substitution of material may be made due to improved technology, supply limitations or other factors. The performance of this product is not affected by such variations.

For current and complete specifications please visit www.mohawkgroup.com



877-3RE-CYCL

Produced with recycled materials

Mohawk Group

Mohawk Group
160 South Industrial Blvd.
Calhoun, GA. 30701
1-800-554-6637
mohawkgroup.com

QSXP1 12PG BROCHR LT



Hydrosphere

Collection	Expedition
Style Name	Hydrosphere
Style Number	GT332
Product Type	Carpet Tile
Size	24" X 24"
Construction	Tufted
Installation	Quarter Turn, Monolithic, Brick Ashlar, Vertical Ashlar

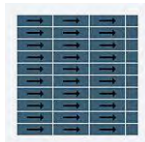


Feature	Description
Backing Material	EcoFlex NXT
Fiber Type	Duracolor® Tricor Premium Nylon with mel
Dye Method	Solution Dyed
Installation Methods	Quarter Turn, Monolithic, Brick Ashlar, Vertical
Stitches per Inch	11 (43.31 per 10cm)
Density	6428
Tufted Pile Weight	20.00 oz/yd ² (678 g/m ²)
Surface Texture	Textured Patterned Loop

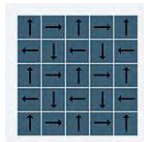
Recommended Installation Methods



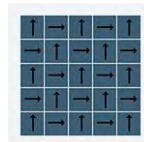
Brick Ashlar



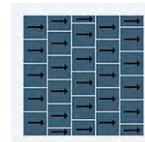
Monolithic



Multi-Directional



Quarter Turn



Vertical Ashlar

Colorways



Sulpher

Color code: 138
Style number: GT332



Lagoon

Color code: 576
Style number: GT332



Glacier

Color code: 739
Style number: GT332



Sediment

Color code: 856
Style number: GT332



Alpine

Color code: 869
Style number: GT332



Fossil

Color code: 949
Style number: GT332



Coastal

Color code: 955
Style number: GT332



Mineral

Color code: 978
Style number: GT332

Performance

Feature	Description
Gauge	1/12 (47.00 rows per 10 cm)
Stain Release Technology	Pass
Foot Traffic Recommendation TARR	Severe
Flammability	ASTM E 648 Class 1 (Glue Down)
Smoke Density	ASTM E 662 Less than 450
Static Propensity	AATCC-134 Under 3.5 KV
Soil Release Technology	EcoSentry Soil Protection

Sustainability

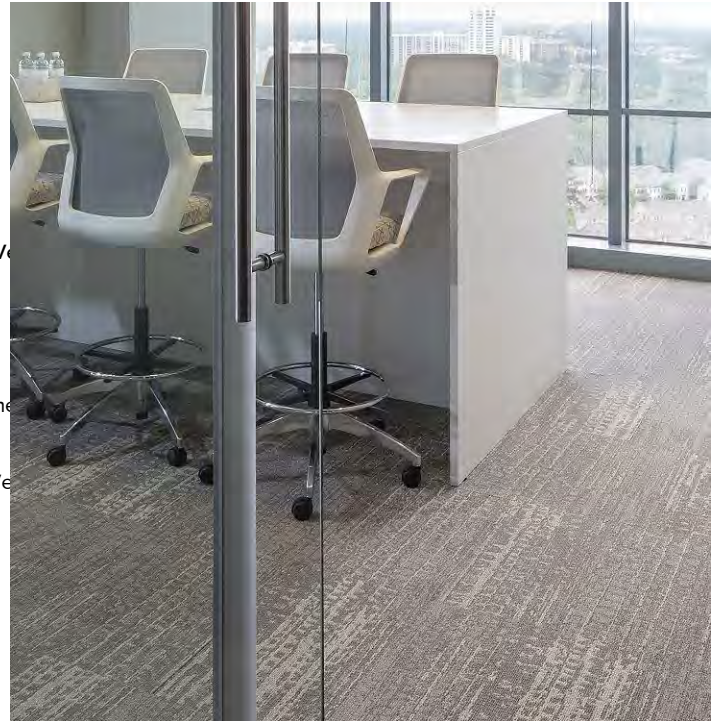
Feature	Description
Embodied Carbon	1.33
Beyond Carbon Neutral	-0.066
Pre-Consumer Recycled Content	0.56
Total Recycled Content	56
NSF 140	EcoFlex NXT - NSF 140 Gold
Indoor Air Quality	GLP 1171
TVOC Range	0.5 mg/m3 or less
Red List Free	True
Declare Label	Nylon Modular Carpet on EcoFlex NXT
Mindful Materials	Participates in Mindful Materials Library
Take Back Program	ReCover Program
Health Product Declaration	HPD 2.1 EcoFlex NXT Gold - 1000 ppm
Environmental Claims Validation	EPD EcoFlex NXT
Global Green Tag	GreenRate Level A, LCARate Silver Plus
LEED Credit Potential	LEED Eligible

Warranties

Lifetime Limited Carpet Tile Warranty, Lifetime Duracolor Stain Warranty, Lifetime Static

Ecosphere

Collection	Expedition
Style Name	Ecosphere
Style Number	GT333
Product Type	Carpet Tile
Size	24" X 24"
Construction	Tufted
Installation	Quarter Turn, Monolithic, Brick Ashlar, Vertical Ashlar

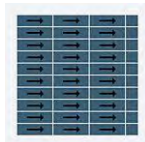


Feature	Description
Backing Material	EcoFlex NXT
Fiber Type	Duracolor® Tricor Premium Nylon with mel
Dye Method	Solution Dyed
Installation Methods	Quarter Turn, Monolithic, Brick Ashlar, Vertical
Stitches per Inch	11 (43.31 per 10cm)
Density	7272
Tufted Pile Weight	20.00 oz/yd2 (678 g/m2)
Surface Texture	Textured Patterned Loop

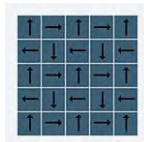
Recommended Installation Methods



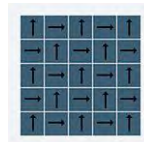
Brick Ashlar



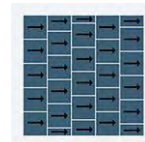
Monolithic



Multi-Directional



Quarter Turn



Vertical Ashlar

Colorways



Sulpher

Color code: 138
Style number: GT333



Lagoon

Color code: 576
Style number: GT333



Glacier

Color code: 739
Style number: GT333



Sediment

Color code: 856
Style number: GT333



Alpine

Color code: 869
Style number: GT333



Fossil

Color code: 949
Style number: GT333



Coastal

Color code: 955
Style number: GT333



Mineral

Color code: 978
Style number: GT333

Performance

Feature	Description
Gauge	1/12 (47.00 rows per 10 cm)
Stain Release Technology	Pass
Foot Traffic Recommendation TARR	Severe
Flammability	ASTM E 648 Class 1 (Glue Down)
Smoke Density	ASTM E 662 Less than 450
Static Propensity	AATCC-134 Under 3.5 KV
Soil Release Technology	EcoSentry Soil Protection



Sustainability

Feature	Description
Beyond Carbon Neutral	This product is 100% carbon neutral plus an additional 5% offset
Carbon Handprint	-0.066 kg CO2e/ft2
Embodied Carbon	1.33 kg CO2e/ft2
Total Recycled Content	56%
Pre-Consumer Recycled Content	56%
NSF 140	EcoFlex NXT - NSF 140 Gold
Indoor Air Quality	GLP 1171
TVOC Range	0.5 mg/m3 or less
Red List Free	True
Declare Label	Nylon Modular Carpet on EcoFlex NXT
Mindful Materials	Participates in Mindful Materials Library
Take Back Program	ReCover Program
Health Product Declaration	HPD 2.1 EcoFlex NXT Gold - 1000 ppm
Environmental Claims Validation	EPD EcoFlex NXT
Global Green Tag	GreenRate Level A, LCARate Silver Plus
LEED Credit Potential	LEED Eligible

Warranties

Lifetime Limited Carpet Tile Warranty, Lifetime Duracolor Stain Warranty, Lifetime Static

Lithosphere

Collection	Expedition
Style Name	Lithosphere
Style Number	GT334
Product Type	Carpet Tile
Size	24" X 24"
Construction	Tufted
Installation	Quarter Turn, Monolithic, Brick Ashlar, Vertical Ashlar

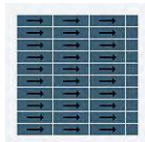


Feature	Description
Backing Material	EcoFlex NXT
Fiber Type	Duracolor® Tricor Premium Nylon with mel
Dye Method	Solution Dyed
Installation Methods	Quarter Turn, Monolithic, Brick Ashlar, Vertical
Stitches per Inch	11.8 (46.46 per 10cm)
Density	6315
Tufted Pile Weight	20.00 oz/yd ² (678 g/m ²)
Surface Texture	Textured Patterned Loop

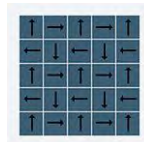
Recommended Installation Methods



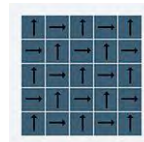
Brick Ashlar



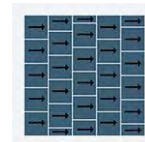
Monolithic



Multi-Directional



Quarter Turn



Vertical Ashlar

Colorways



Sulpher

Color code: 138
Style number: GT334



Lagoon

Color code: 576
Style number: GT334



Glacier

Color code: 739
Style number: GT334



Sediment

Color code: 856
Style number: GT334



Alpine

Color code: 869
Style number: GT334



Fossil

Color code: 949
Style number: GT334



Coastal

Color code: 955
Style number: GT334



Mineral

Color code: 978
Style number: GT334

Performance

Feature	Description
Gauge	1/12 (47.00 rows per 10 cm)
Stain Release Technology	Pass
Foot Traffic Recommendation TARR	Severe
Flammability	ASTM E 648 Class 1 (Glue Down)
Smoke Density	ASTM E 662 Less than 450
Static Propensity	AATCC-134 Under 3.5 KV
Soil Release Technology	EcoSentry Soil Protection



Sustainability

Feature	Description
Embodied Carbon	1.33
Beyond Carbon Neutral	-0.066
Pre-Consumer Recycled Content	0.56
Total Recycled Content	56
NSF 140	EcoFlex NXT - NSF 140 Gold
Indoor Air Quality	GLP 1171
TVOC Range	0.5 mg/m3 or less
Red List Free	True
Declare Label	Nylon Modular Carpet on EcoFlex NXT
Mindful Materials	Participates in Mindful Materials Library
Take Back Program	ReCover Program
Health Product Declaration	HPD 2.1 EcoFlex NXT Gold - 1000 ppm
Environmental Claims Validation	EPD EcoFlex NXT
Global Green Tag	GreenRate Level A, LCARate Silver Plus
LEED Credit Potential	LEED Eligible

Warranties

Lifetime Limited Carpet Tile Warranty, Lifetime Duracolor Stain Warranty, Lifetime Static