

D.Y.F.™ DESIGN YOUR FLOOR!

www.interfacehospitality.com

United States Headquarters

1503 Orchard Hill Road
LaGrange, GA 30240
1.888.228.6301

Canadian Headquarters

233 Lahr Drive
Belleville, ON K8N 5S2
1.800.267.2149 ext.2128

Mexican Headquarters

Montes Urales # 415 Piso 6
Col. Lomas de Chapultepec
Mexico City, D.F. 11000
+ 52 55 6395 5100

Latin American Headquarters

Rua Surubim, 577 Conjuntos
73/74 7º Andar
04571-050 São Paulo SP
Brazil
+ 55 11 2196 0900

IFS00727
04/2016

Interface Hospitality



Mission Zero and the Mission Zero logo are registered trademarks of Interface, Inc.



GOOD NATURE



Interface Hospitality

COVER
PRODUCT: GN161
SIZE: 25cm x 1m
COLOR: 105324
INSTALLATION: Ashlar

A
PRODUCT: GN160
SIZE: 25cm x 1m
COLOR: 2570007
INSTALLATION: Ashlar

B
PRODUCT: GN157
SIZE: 25cm x 1m
COLOR: 2567007
INSTALLATION: Ashlar

DESIGN YOUR FLOOR!

A

B

WITH GOOD NATURED

Taking inspiration from the organic patterning found within a majestic tree, the Good Natured Collection emulates the natural flow of spreading roots to climbing bark, reaching up through branches into a leaf covered canopy.

Choosing to engage with any of the five patterns all 25cm x 1m Skinny Planks offers an organic, natural retreat to any space. Use them together or alone to create seamless, earthy pathways and large scale designs as one tile flows into another.



A
PRODUCT: GN156
SIZE: 25cm x 1m
COLOR: 105197
INSTALLATION: Pattern By Tile

B
PRODUCT: GN156
SIZE: 25cm x 1m
COLOR: 2566902
INSTALLATION: Pattern By Tile

C
PRODUCT: GN156
SIZE: 25cm x 1m
COLOR: 9566904
INSTALLATION: Pattern By Tile



D.Y.F.™ DESIGN YOUR FLOOR!

THE JOURNEY BEGINS HERE

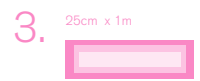
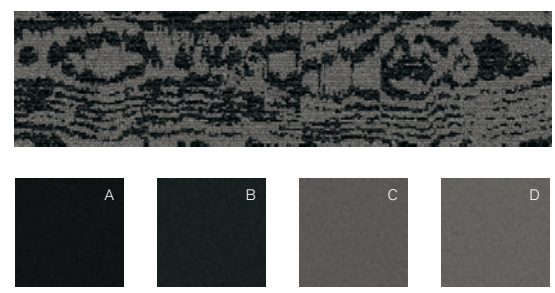
Create a refreshing experience for guests with a mix of pattern, texture and color that's uniquely yours.



Select a Product from one of the five styles.



Working with your Account Executive select 4 different colors to find the perfect hues for your project. This product was designed using your darkest value colors in the A and B position, with your lightest values in the C and D position. The darkest colors in A and B should be similar in value and color. The lightest colors in C and D should also be similar in value and color.



When you have colored the pattern, we can produce samples in your palette. Contact your Account Executive for sample orders.

B
 PRODUCT: GN156
 SIZE: 25cm x 1m
 COLOR: 105197
 INSTALLATION: Pattern By Tile

A
 PRODUCT: GN156
 SIZE: 25cm x 1m
 COLOR: 2566001
 INSTALLATION: Pattern By Tile



Collection
GOOD NATURED

Product
GN156

PRODUCT SPECIFICATIONS

- GN156**
 Style: 125660AK00 (25cm x 1m)

- Backing System**
 GlasBac® Tile

- Yarn System**
 100% Recycled Content Type 6 Nylon

- Yarn Manufacturer**
 Aquafi

- Color System**
 100% Solution Dyed

- Construction**
 Tufted Cut & Loop

- Lifetime Antimicrobial**
 Intersept®

- Soil / Stain Protection**
 Protekt™

- Pile Thickness**
 0.146 in., 3.7mm

- Pile Density**
 5,425 oz/yd³

- Total Recycled Content**
 40%

- Installation**
 Ashlar, Herringbone

- CRI Green Label Plus**
 GLP0820

Suggested Custom Colors



Collection
GOOD NATURED

Product
GN157

PRODUCT SPECIFICATIONS

| |
|--|
| GN157 Style: 125670AK00 (25cm x 1m) |
| Backing System GlasBac® Tile |
| Yarn System 100% Recycled Content Type 6 Nylon |
| Yarn Manufacturer Aquafi |
| Color System 100% Solution Dyed |
| Construction Tufted Cut & Loop |
| Lifetime Antimicrobial Intersept® |
| Soil / Stain Protection Protekt®20 |
| Pile Thickness 0.146 in., 3.7mm |
| Pile Density 5,425 oz/yd³ |
| Total Recycled Content 63% |
| Installation Ashlar, Herringbone |
| CRI Green Label Plus GLP0820 |

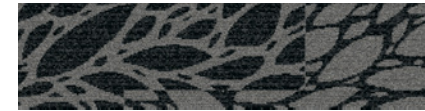
Suggested Custom Colors



105213



2567-002



2567-004



2567-006



2567-008



2567-010



2567-012



2567-001



2567-003



2567-005



2567-007



2567-009



2567-011



2567-013



A PRODUCT: GN157
SIZE: 25cm x 1m
COLOR: 25670006
INSTALLATION: Ashlar

B PRODUCT: GN157
SIZE: 25cm x 1m
COLOR: 25670002
INSTALLATION: Ashlar

C PRODUCT: GN160
SIZE: 25cm x 1m
COLOR: 25700002
INSTALLATION: Ashlar



A
PRODUCT: GN159
SIZE: 25cm x 1m
COLOR: 25690008
INSTALLATION: Pattern By Tile

B
PRODUCT: GN159
SIZE: 25cm x 1m
COLOR: 25690002
INSTALLATION: Pattern By Tile

C
PRODUCT: GN159
SIZE: 25cm x 1m
COLOR: 105992
INSTALLATION: Pattern By Tile

D
PRODUCT: GN159
SIZE: 25cm x 1m
COLOR: 25690010
INSTALLATION: Pattern By Tile



A

B

D

C

A
 PRODUCT: GN159
 SIZE: 25cm x 1m
 COLOR: 25690008
 INSTALLATION: Pattern By Tile

B
 PRODUCT: GN159
 SIZE: 25cm x 1m
 COLOR: 25690010
 INSTALLATION: Pattern By Tile

C
 PRODUCT: GN159
 SIZE: 25cm x 1m
 COLOR: 105292
 INSTALLATION: Pattern By Tile

D
 PRODUCT: GN159
 SIZE: 25cm x 1m
 COLOR: 25690002
 INSTALLATION: Pattern By Tile



Collection
GOOD NATURED

Product
GN159

PRODUCT SPECIFICATIONS

- GN159**
 Style: 125690AK00 (25cm x 1m)
-
- Backing System**
 GlasBac® Tile
-
- Yarn System**
 100% Recycled Content Type 6 Nylon
-
- Yarn Manufacturer**
 Aquafi
-
- Color System**
 100% Solution Dyed
-
- Construction**
 Tufted Cut & Loop
-
- Lifetime Antimicrobial**
 Intersept®
-
- Soil / Stain Protection**
 Protekt™
-
- Pile Thickness**
 0.146 in., 3.7mm
-
- Pile Density**
 5,425 oz/yd³
-
- Total Recycled Content**
 63%
-
- Installation**
 Ashlar, Herringbone
-
- CRI Green Label Plus**
 GLP0820

Suggested Custom Colors



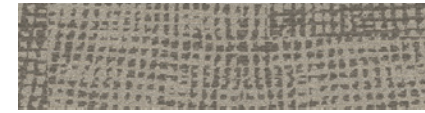
Collection
GOOD NATURED

Product
GN160

PRODUCT SPECIFICATIONS

| |
|--|
| GN160 Style: 125700AK00 (25cm x 1m) |
| Backing System GlasBac® Tile |
| Yarn System 100% Recycled Content Type 6 Nylon |
| Yarn Manufacturer Aquafi |
| Color System 100% Solution Dyed |
| Construction Tufted Cut & Loop |
| Lifetime Antimicrobial Intersept® |
| Soil / Stain Protection Protekt™ |
| Pile Thickness 0.146 in., 3.7mm |
| Pile Density 5,425 oz/yd³ |
| Total Recycled Content 63% |
| Installation Ashlar, Herringbone |
| CRI Green Label Plus GLP0820 |

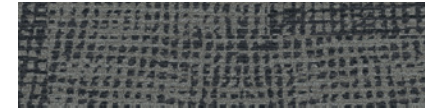
Suggested Custom Colors



105308



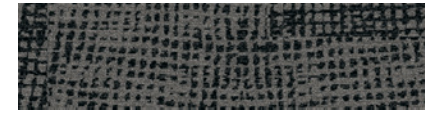
2570-001



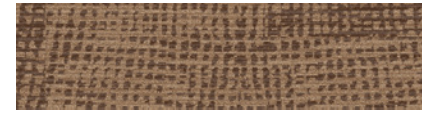
2570-002



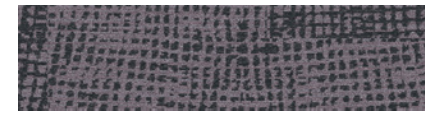
2570-003



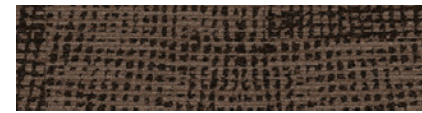
2570-004



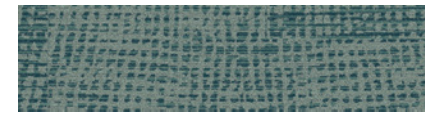
2570-005



2570-006



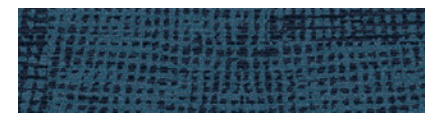
2570-007



2570-008



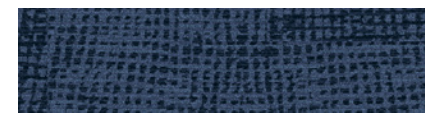
2570-009



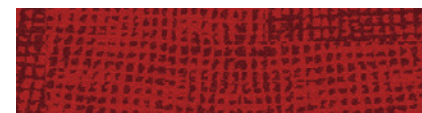
2570-010



2570-011



2570-012



2570-013



C PRODUCT: GN160
SIZE: 25cm x 1m
COLOR: 25700007
INSTALLATION: Pattern By Tile

B PRODUCT: GN160
SIZE: 25cm x 1m
COLOR: 25700009
INSTALLATION: Pattern By Tile

A PRODUCT: GN160
SIZE: 25cm x 1m
COLOR: 25700002
INSTALLATION: Pattern By Tile



A
 PRODUCT: GN161
 SIZE: 25cm x 1m
 COLOR: 25710011
 INSTALLATION: Pattern By Tile

B
 PRODUCT: GN161
 SIZE: 25cm x 1m
 COLOR: 25710009
 INSTALLATION: Pattern By Tile

C
 PRODUCT: GN161
 SIZE: 25cm x 1m
 COLOR: 25710006
 INSTALLATION: Pattern By Tile

D
 PRODUCT: GN161
 SIZE: 25cm x 1m
 COLOR: 25710007
 INSTALLATION: Pattern By Tile

E
 PRODUCT: GN160
 SIZE: 25cm x 1m
 COLOR: 25700009
 INSTALLATION: Pattern By Tile



Collection
GOOD NATURED

Product
GN161

PRODUCT SPECIFICATIONS

- GN161**
 Style: 125710AK00 (25cm x 1m)

- Backing System**
 GlasBac® Tile

- Yarn System**
 100% Recycled Content Type 6 Nylon

- Yarn Manufacturer**
 Aquafi

- Color System**
 100% Solution Dyed

- Construction**
 Tufted Cut & Loop

- Lifetime Antimicrobial**
 Intersept®

- Soil / Stain Protection**
 Protekt™

- Pile Thickness**
 0.146 in., 3.7mm

- Pile Density**
 5,425 oz/yd³

- Total Recycled Content**
 63%

- Installation**
 Ashlar, Herringbone

- CRI Green Label Plus**
 GLP0820

Suggested Custom Colors



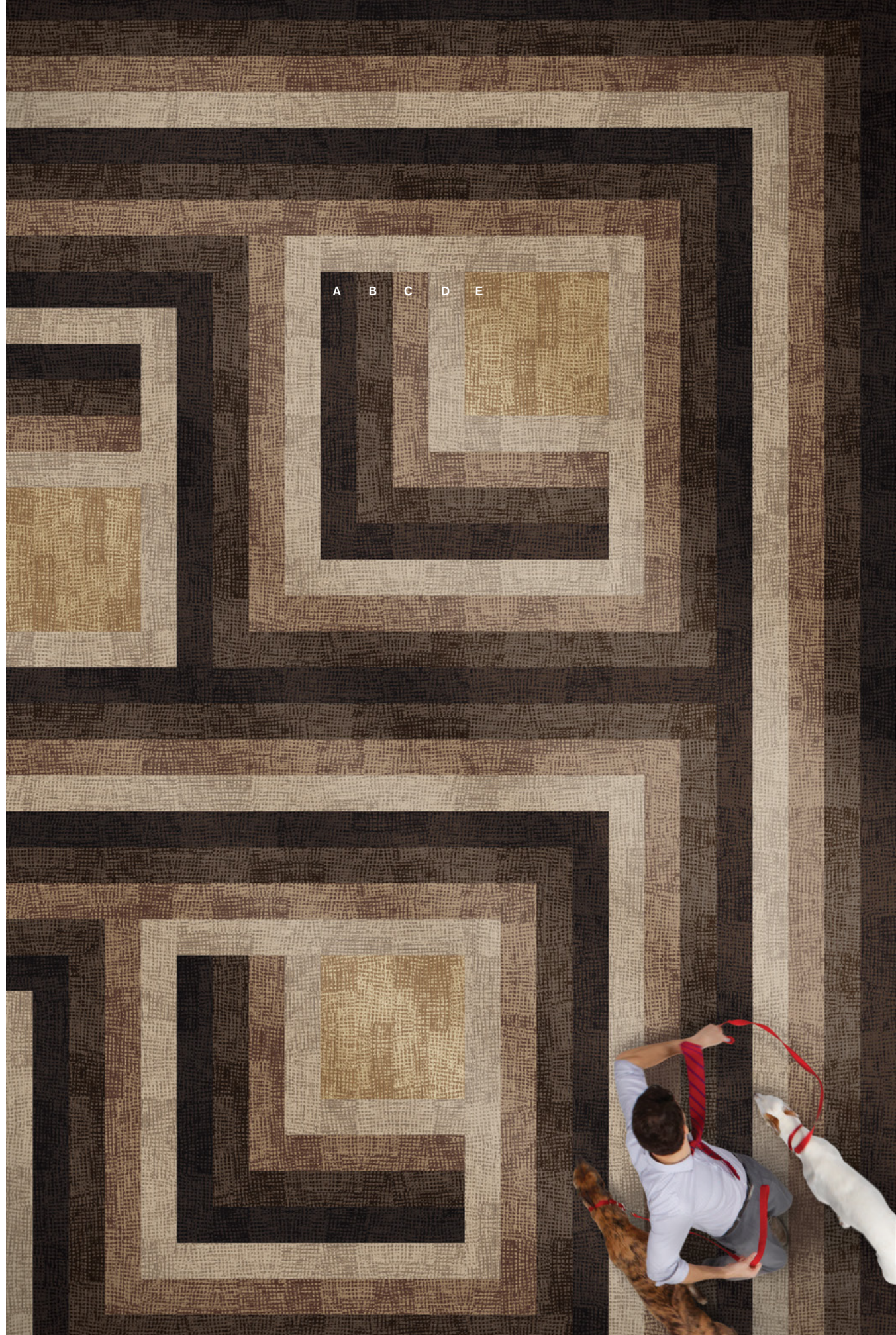
A PRODUCT: GNI160
 SIZE: 25cm x 1m
 COLOR: 25700009
 INSTALLATION: Pattern By Tile

B PRODUCT: GNI160
 SIZE: 25cm x 1m
 COLOR: 25700007
 INSTALLATION: Pattern By Tile

C PRODUCT: GNI160
 SIZE: 25cm x 1m
 COLOR: 25700005
 INSTALLATION: Pattern By Tile

D PRODUCT: GNI160
 SIZE: 25cm x 1m
 COLOR: 25700001
 INSTALLATION: Pattern By Tile

E PRODUCT: GNI160
 SIZE: 25cm x 1m
 COLOR: 25700003
 INSTALLATION: Pattern By Tile

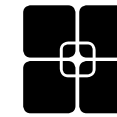


WHY MODULAR CARPET TILE?



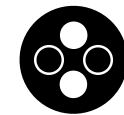
Flexibility

Keep Your Floor Beautiful. Modular carpet tile allows you to play with pattern and design without having to special order carpet sizes. And the same flexibility that lets you create your floor helps you keep it looking good because in-house staff can easily replace individual tiles that become damaged or heavily soiled with no down time or outside contractors required.



TacTiles

No Glue Installation. Installation or reconfiguration with our glue-free TacTiles installation system means there's no glue smell and no drying time. Guests can use the room as soon as the last piece is laid and all they'll notice is a beautiful floor.



Intersept

Mold Protection. No matter what's spilled on the floor, our proprietary preservative, Intersept, protects our modular carpet against the growth of odor-causing bacteria, guaranteed. With proper maintenance Intersept treated carpet safely and effectively inhibits the growth of mold and other bacteria so your floors are always fresh.



Less Waste

Save Money. Interface Hospitality carpet tile averages just 3.9% installation waste compared to as much as 18% or more with patterned roll carpet. Use our non-directional styles with an average of 1.5% waste and save even more. That means more of your flooring investment stays on the floor, not in a dumpster.



Sustainable Choice

Environmental Responsibility. Interface was the industry's first to earn an EPD (Environmental Product Declaration), which evaluates consistent factors based on full lifecycle assessment (LCA). In addition, all of our products with GlasBac, GlasBacRE and NexStep backings meet NSF/ANSI 140 Sustainable Assessment for Carpet.



InterComfort

Comfort underfoot. Offer guests the additional comfort and acoustical benefits of a cushion underlay with InterComfort, Interface Hospitality cushion that installs easily and prevents damage to your subfloor. InterComfort is available in two formats: InterComfort PS+ for public spaces and InterComfort GR for guest rooms.



Cool Carpet
 Our third party verified carbon offset program zeroes out all greenhouse gas (GHG) emissions associated with the entire lifecycle of your carpet.

Sustainable Assessment for Carpet
 The only carpet sustainability standard in North America that evaluates the environmental impact of carpet for its entire lifecycle.

CRI Green Label Plus
 An independent testing program that identifies carpet and adhesives with very low emissions of VOCs to help improve indoor air quality.

Environmental Product Declaration (EPD)
 A statement of product ingredients and environmental impacts over the entire lifecycle of a product. A comprehensive life cycle assessment (LCA) is performed to ISO standards to develop an EPD, after which both the EPD and the LCA must be third party verified.

