



AmericanBiltrite
Flooring

MARATHON

RUBBER TILE & SHEET



Interdeco[™]

MARATHON

ROUND | NATURAL SLATE | DESERT STONE | LAKELAND SLATE | OASIS

The Marathon rubber flooring collection combines looks and function with no compromise. Like all truly well-designed products, it provides value over time due to its long life cycle and low maintenance requirement.

The collection comes in a large array of styles, patterns, colors, profiles and accessories to fit every design need. Discover them in the tile lines; Round, Natural Slate, Desert Stone, Lakeland Slate as well as in the sheet line; Oasis.

And looks aren't all. Marathon rubber flooring is slip resistant, contains antimicrobial & antifungal properties and no PVCs. Perfectly straight edges provide for a seamless fit that won't change over time.

BEAUTY. FUNCTION. VALUE.
THAT'S MARATHON.





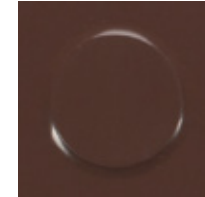
ROUND



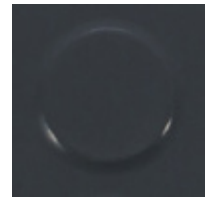
MCR-140
Sandstone Beige



MCR-134
Platinum Gray



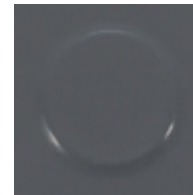
MCR-148
Deep Chestnut



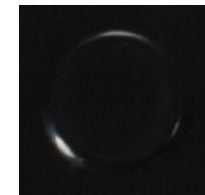
MCR-137
Carriage Gray



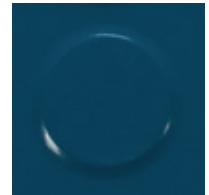
MCR-133
Polished Pewter



MCR-123
Midnight Charcoal



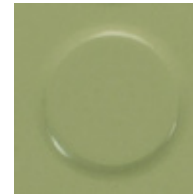
MCR-120
Onyx Black



MCR-191
Night Sky



MCR-181
Green Mint



MCR-183
Lime Sorbet



MCR-180
Aqua Teal



MCR-190
Blue Willow



MCR-173
Golden Valley



MCR-150
Sienna Sunset



MCR-152
Cherry Red



MCR-155
Alfresco Brick

FEATURES & BENEFITS

- PVC-FREE with VERY LOW VOC emissions
- Outstanding foot comfort
- Great slip resistance. Meets ADA requirement for slip resistance.
- Available in rolls of 60" x 50' Nominal and 18"x18" or 36"x36" tiles
- Antimicrobial & antifungal properties
- Great sound absorption
- Low maintenance cost with the NO WAX floor option
- Micro-Ground edges for a perfect fit

CUSTOM COLORS AVAILABLE. For special projects, custom colors can be created in all Marathon lines to match your specific design needs. Minimum order required.

35 11/16" x 35 11/16" (905 mm x 905 mm) 17 13/16" x 17 13/16" (452 mm x 452 mm)

Thickness

0.118" (3 mm)



OASIS



60" x 50' Nominal (1.5 m x 15.2 m) Thickness (Paper finish)

0.080" (2 mm)

0.118" (3 mm)



RRO-504
Tawny Pearl



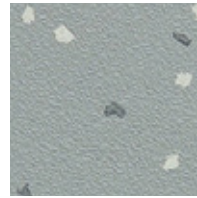
RRO-508
Taupe Tease



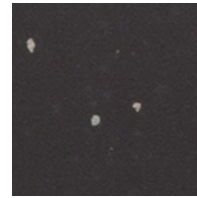
RRO-545
Moroccan Crackle



RRO-503
Northern Light



RRO-531
Pewter Fossil



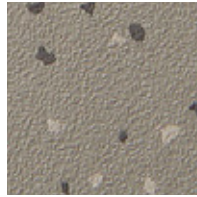
RRO-537
Warm Sable



RRO-514
Desert Daystar



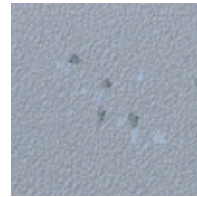
RRO-505
Orient Espresso



RRO-534
Castle Marne



RRO-532
Smoky Branch



RRO-509
Shady Twilight



RRO-523
Shadow Dune



RRO-515
Soft Sun



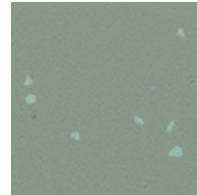
RRO-506
Antique Paradise



RRO-544
Burnished Cinnamon



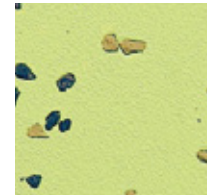
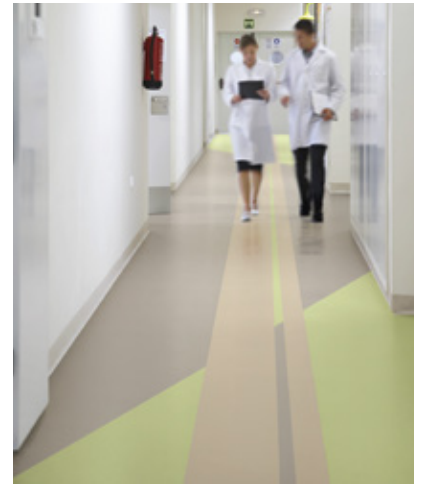
RRO-550
Gobi Lilac



RRO-511
Palm Paradise



RRO-512
Silky Sage



RRO-575
Oasis Flower

PROFILES AVAILABLE FOR ROUND | NATURAL SLATE | DESERT STONE | LAKELAND SLATE



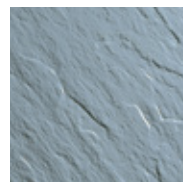
Round



Deck Point



Hammered



Slate

Round



Deck Point



Hammered



Slate



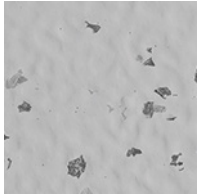
For minimum orders of 1,800 sq. ft.* (168 m²) the Marathon Round, Natural Slate, Desert Stone and Lakeland Slate **color palette** can be customized to any profile, including Round, Deck Point, Hammered or Slate, as a special order item. Applicable to base colors only (no chips) except for Hammered and Slate profiles (available chips only).

Note: For actual profile sizes request samples.

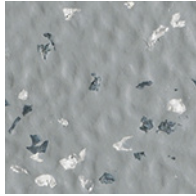
*Stair tread options: 1,000 lin. ft. (304.8 m) of One-Piece or 1,500 lin. ft. (474.2 m) of Regular.

DESERT STONE

LAKELAND SLATE



DSH-103
Silver Circle

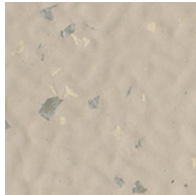


DSH-133
Polished Pewter

All colors shown available in both Desert Stone & Lakeland Slate profiles



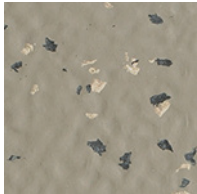
DSH-142
Almond Biscotti



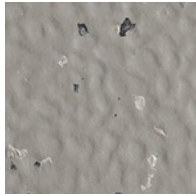
DSH-144
Roycroft Tan



DSH-140
Egyptian Shadow



DSH-145
Casa Madrona



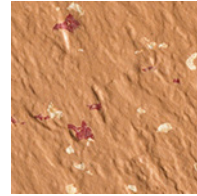
DSH-134
Platinum Gray



DSH-146
Buckskin



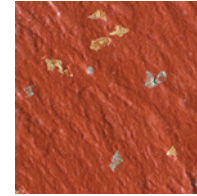
MLS-173
Golden Valley



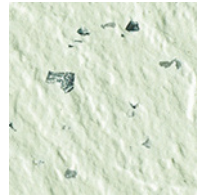
MLS-157
Copper Dust



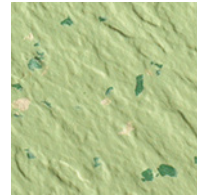
MLS-150
Sienna Sunset



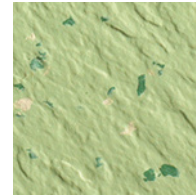
MLS-155
Alfresco Brick



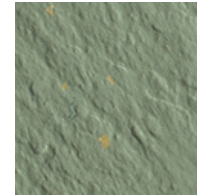
MLS-117
Whimsical White



MLS-181
Green Mint



MLS-183
Lime Sorbet



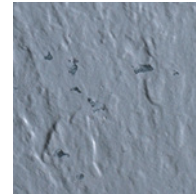
MLS-111
Emerald Isle



MLS-180
Aqua Teal



MLS-130
Maltese Gray



MLS-190
Blue Willow



MLS-191
Night Sky

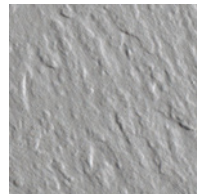
DESERT STONE features a hammered profile (DSH series)

LAKELAND SLATE features a slate profile (MLS series)

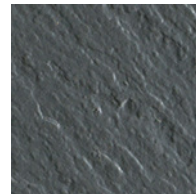
To order Desert Stone:
use code DSH + color number

To order Lakeland Slate:
use code MLS + color number

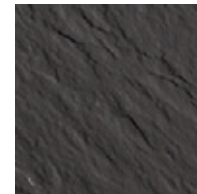
NATURAL SLATE



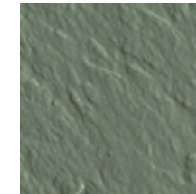
MCA-133
Polished Pewter



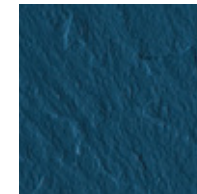
MCA-123
Midnight Charcoal



MCA-137
Carriage Gray



MCA-189
Emerald Luster



MCA-191
Night Sky





MARATHON®

ROUND | NATURAL SLATE | DESERT STONE | LAKELAND SLATE | OASIS

TECHNICAL SPECIFICATIONS

| | | | | |
|--|---|---------------------------|---|--|
| Gauge | Tile* | DSH, MLS, MCA, MCR | 3 mm | 0.118" |
| | Sheet | RRO | 2 mm, 3 mm | 0.080", 0.118" |
| Sizes | Tile* | DSH, MLS, MCA, MCR | 905 mm x 905 mm 452 mm x 452 mm | 35 11/16" X 35 11/16" 17 13/16" X 17 13/16" |
| | Sheet | RRO | 1.5 m X 15.2 m | 60" Nominal X 50' |
| Composition | Homogeneous | | | |
| ASTM D 3389 | Abrasion Resistance (H-18,500 g @ 1,000 cycles) (TILES) | | Pass | |
| ASTM D 2047 | Static Coefficient of Friction (leather) | | ≥ 0.5 | |
| ASTM E 492/ E 989 | Impact Insulation Class (IIC) | | 60 (3mm) (with suspended ceilings) | |
| ASTM E 648 | Critical Radiant Flux CRF (W/cm ²) | | ≥ 0.45 | |
| ASTM E 662 | Smoke Density | | ≤ 450 | |
| ASTM F 925 | Chemical Resistance | | Meets requirements (details upon request) | |
| ASTM F 970 | Static Load (modified at 1100 psi for tile / 2000 psi for sheet) | | ≤ 0.005" | |
| ASTM F 1514 | Heat Stability | | ΔE ≤ 8.0 | |
| ASTM F 1344 | Rubber Floor Tile | | Class 1, A or B | |
| ASTM F 1859 | Rubber Sheet Floor | | Type I | |
| ASTM G 21 | Antimicrobial/Antifungal Resistance Test | | Pass (28 days) | |
| Indoor Air Quality (IAQ): | Volatile Organic Compounds (VOC's) | | FloorScore Certified by SCS Certification Registration Number SCS-FS-01492 | |
| New York City Fire Prevention Code | | | Accepted under section 27-348 | |
| New York State Fire Prevention Code | | | Complies with Article 15, Part 1120 | |
| Adhesives: | AD-777 | | Regular traffic | |
| | AD-590 | | Heavy rolling loads & under patients' beds | |
| Limited Wear Warranty | | | 10 years | |
| Resistance to oils and greases | MARATHON® is not recommended for environments where it could be exposed to oils and greases, whether mineral, animal or vegetable. | | | |
| Antimicrobial/Antifungal | IMPORTANT: All Marathon Rubber Flooring, through its composition and without the use of antimicrobial chemicals, does not promote microbial growth. | | | |

Please note that technical website documents prevail.

* MICRO-GROUND™ : Tiles are edge sanded

INSTALLATION

Optimal results can only be achieved by following manufacturer's instructions closely. Only adhesives approved by American Biltrite specifically for MARATHON should be used for gluing. Detailed installation instructions can be found at american-biltrite.com and should be carefully followed.



CERTIFIED BY
SCS Global Services



American Biltrite 200 Bank Street, Sherbrooke, Quebec J1H 4K3 Canada | american-biltrite.com
To order samples: flooring@american-biltrite.com
1.800.437.8743 | Technical Services: 1.800.479.01

© Marathon is a registered trademark of American Biltrite