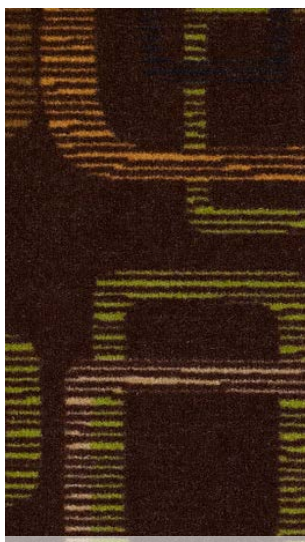


650 Megabyte



750 Data



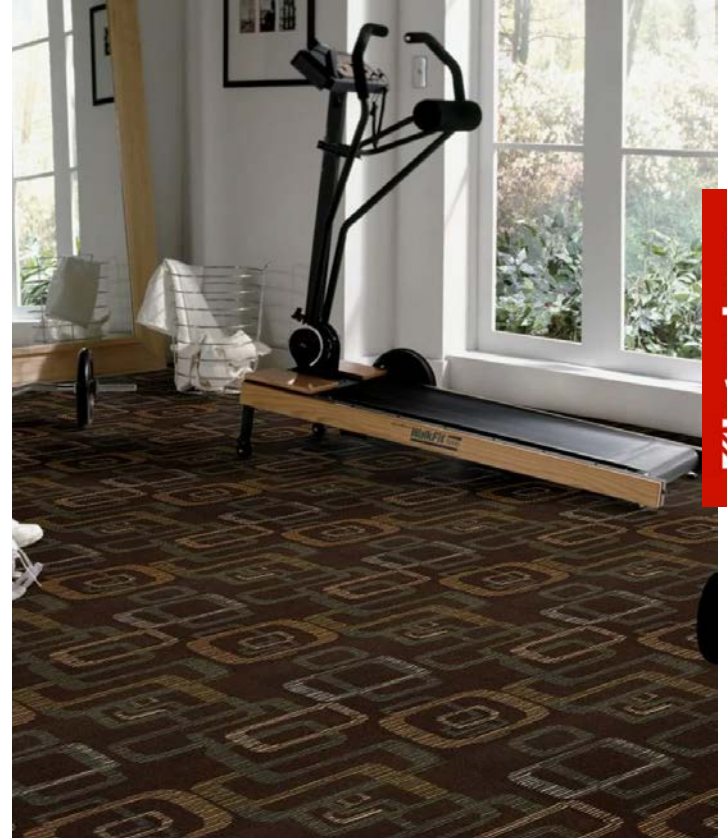
950 Web



350 Wired



Style Name	BOX SUITE	
Collection Name	Hospitality Solutions	
Style Number	54600	
Product Type	Broadloom	
Construction	cut pile applied pattern	
Fiber	100% Nylon	
Dye Method	printed	
Primary Backing	Synthetic	
Secondary Backing	Classicbac	
Traffic Rating	Heavy	
	U.S.	Metric
Product Size	12 ft	3.66 m
Gauge	1/10 in	3937 per 10 cm
Stitches	13 per in	49 per 10 cm
Finished Pile Thickness	0.209 in	5.31 mm
Average Density	6201 oz/yd³	
Total Thickness	0.331 in	8.41 mm
Tufted Weight	36 oz/yd²	1220.6 g/m²
Pattern Repeat	2 ft W X 2 ft L	6096 cm W X 6096 cm L



Recommended Installation Methods

Direct Glue

Performance Testing

Pill Test	Pass
Radiant Panel	Class I
NBS Smoke	Less than 450
Electrostatic Propensity	Less than 3.5 kv
CRI Greenlabel Plus	GLP8878
ADA Compliance	>0.6, meets the recommended static coefficient of friction for ADA walking surfaces and accessible routes

Warranties

Eco Solution Q Nylon (print base) Classicbac Twenty Year Commercial Limited Warranty

Environmental

Recycled Content **Pre-consumer - <1%, Post-consumer - 0%**

Specifications are subject to nominal manufacturing variance. Material supply and/or manufacturing processes may necessitate changes without notice.