



Printed on 50% post consumer waste (PCW) fiber manufactured using wind power.

We have tried our very best to accurately represent product colors. However, due to the nature of printed materials, color of actual products may vary slightly. Please request a sample to see actual product color.

[www.interface.com](http://www.interface.com)

**United States Headquarters**  
1280 West Peachtree Street NW  
Atlanta, GA 30309  
1.800.634.6032

**Canadian Headquarters**  
233 Lahr Drive  
Belleville, ON K8N 5S2  
1.800.267.2149 ext.52128

**Brazilian Headquarters**  
Rua Surubim, 577 - Conjuntos  
73/74 7º Andar  
04571-050 - São Paulo - SP  
+ 55 11 2196 0900

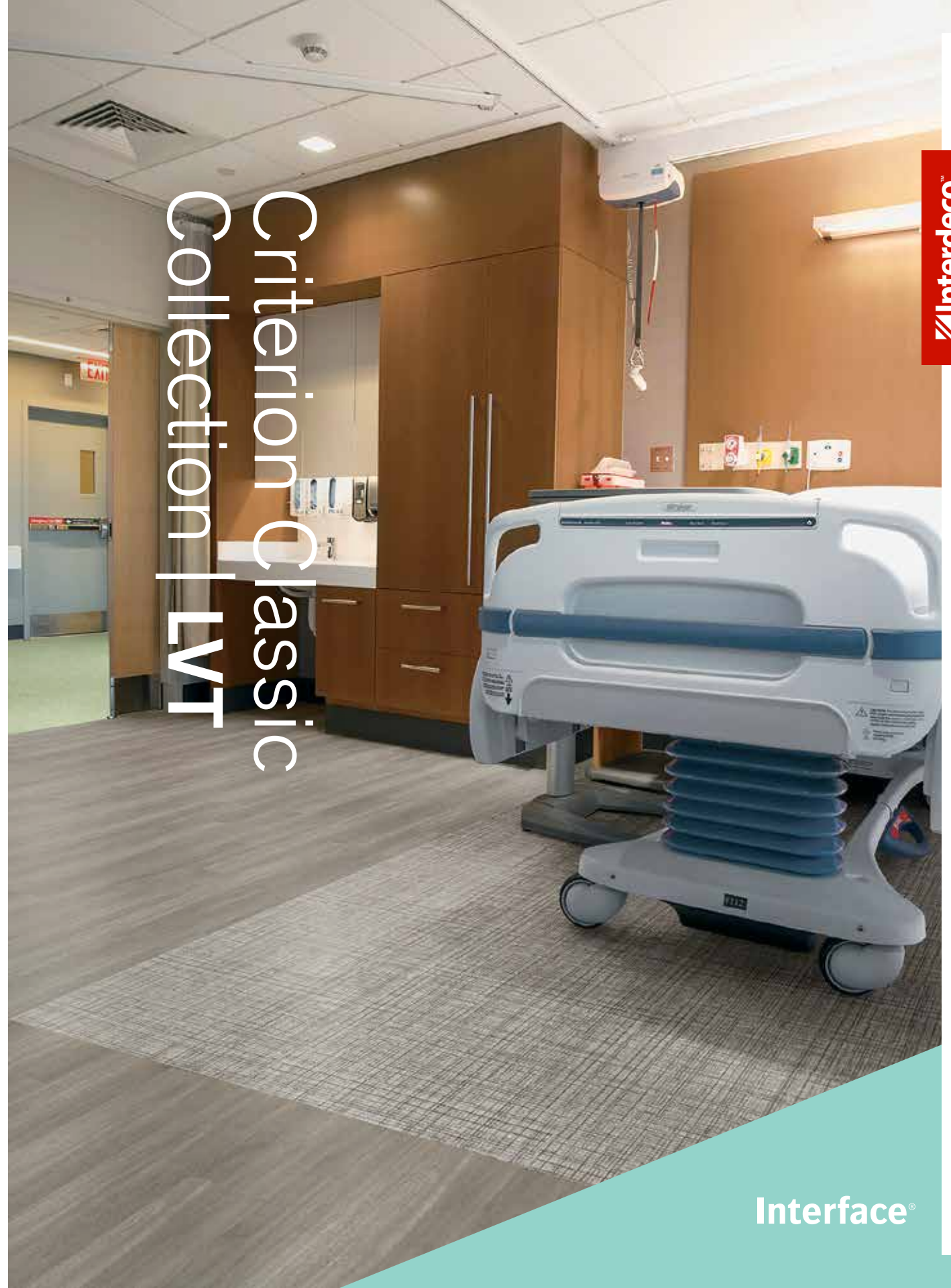
**Latin American Headquarters**  
Montes Urales # 415 Piso 6  
Col. Lomas de Chapultepec  
Mexico City, 11000  
Mexico  
+52 55 5520 0195  
+52 55 2791 6812

CIM # IFS00870 06/2020

# Criterion Classic Collection | LVT



Climate change is undeniable. And reversible. Our mission is to prove it. Join the #ClimateTakeBack and help create a climate fit for life.



Interface®

When it comes to patient experience, the healing environment demands positive outcomes. As the largest footprint in your facility, flooring supports every activity and is vital in supporting health, safety, and wellness.

Interface's integrated portfolio of modular LVT, carpet tile and nora® premium rubber is a complete flooring system designed to work together to meet space-specific needs and to support you in fostering a positive patient experience, improving health, reducing operational costs, and caring for the caregiver – all in a sustainable way, from a single source provider.

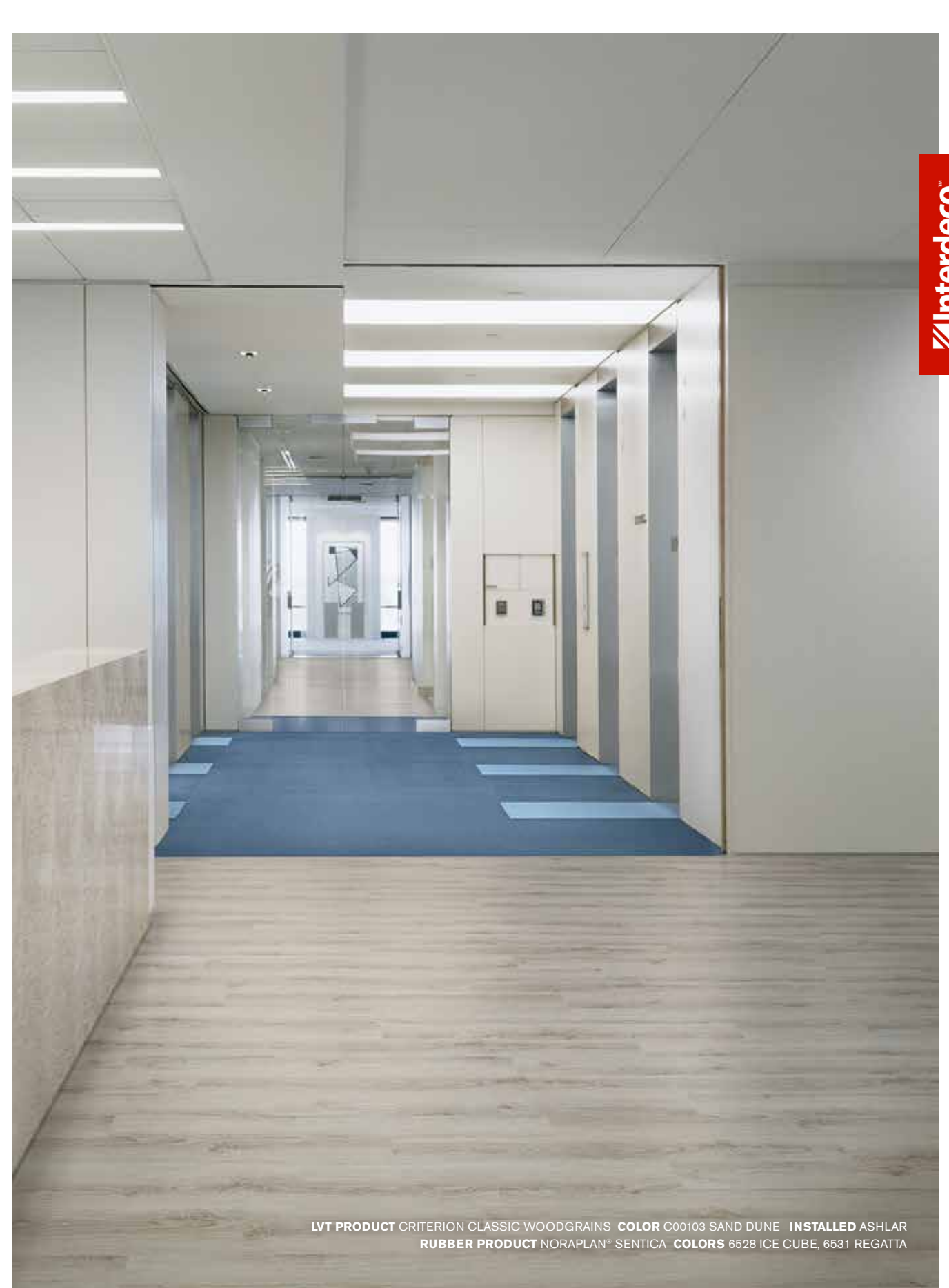
The Criterion Classic™ Collection is a curated selection of our best-selling LVT looks. Our Criterion category of LVT is designed to suit the performance demands of a healthcare environment, offering superior static load performance, a profile that eliminates trip hazards, and Ceramor™ ceramic-bead coating, all backed by a 15-year warranty. Criterion Classic LVT and nora® premium rubber flooring are natural companions and can be combined to provide a high-performance, transition-free flooring solution.







**CARPET PRODUCT** AE310 **COLOR** 106574 MUSHROOM **INSTALLED** NON-DIRECTIONAL  
**LVT PRODUCT** CRITERION CLASSIC WOVENS **COLOR** C00302 TWINE



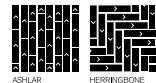
**LVT PRODUCT** CRITERION CLASSIC WOODGRAINS **COLOR** C00103 SAND DUNE **INSTALLED** ASHLAR  
**RUBBER PRODUCT** NORAPLAN® SENTICA **COLORS** 6528 ICE CUBE, 6531 REGATTA



## Specifications

Product Number	C001
Product Construction	High Performance Luxury Vinyl Tile
Class / ASTM F1700	Class III Printed Vinyl Plank
Wear Layer Thickness	22 mil
Total Thickness	3 mm
Backing Class	Commercial Grade
Finish	Ceramor™ Coating
Nominal Dimensions	12.5 cm x 1 m (4.923 in x 39.38 in)
Indoor Air Quality	GREENGUARD Gold FloorScore® Certified CDPH 01350 Compliant
Carbon Offsets	Carbon Neutral Floors™
Environmental Certifications	NSF/ANSI 332 Silver
LEED v4	Contributes to IEO: <i>Low Emitting Materials; M&amp;R; EPD and EPR</i>
Installation Methods	Ashlar, Herringbone

**\*Now with Recycled Content** View the full product specification on [interface.com](http://interface.com) for details



## Criterion Classic™ Woodgrains Colorline



C00101 MADAGASCAR



C00102 CHESTNUT



C00103 SAND DUNE



C00104 WASHED MAPLE



C00105 CEDAR



C00106 ANTIQUE LIGHT OAK



C00107 ANTIQUE GRAY OAK



C00108 MUSHROOM

All product specifications reflect averages derived from product sample testing, are subject to normal manufacturing and testing tolerances and inherent pattern variances, and may be changed without notice. For more information about these and other important attributes of the product(s) described herein, including recycled content and product warranty information, please see our full LVT product disclaimer at [interface.com](http://interface.com).





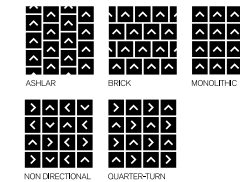
## Specifications

## Criterion Classic™ Stones Colorline

Product Number	C002
Product Construction	High Performance Luxury Vinyl Tile
Class / ASTM F1700	Class III Printed Vinyl Tile
Wear Layer Thickness	22 mil
Total Thickness	3 mm
Backing Class	Commercial Grade
Finish	Ceramor™ Coating
Nominal Dimensions	50 cm x 50 cm (19.69 in x 19.69 in)
Indoor Air Quality	GREENGUARD Gold FloorScore® Certified CDPH 01350 Compliant
Carbon Offsets	Carbon Neutral Floors™
Environmental Certifications	NSF/ANSI 332 Silver
LEED v4	Contributes to IEO: <i>Low Emitting Materials</i> ; M&R: <i>EPD</i> and <i>EPR</i>

Installation Methods Ashlar, Brick, Monolithic, Non Directional, Quarter-Turn

**\*Now with Recycled Content** View the full product specification on [interface.com](http://interface.com) for details



C00201 MARONE DARK MARBLE



C00202 POLISHED CEMENT

All product specifications reflect averages derived from product sample testing, are subject to normal manufacturing and testing tolerances and inherent pattern variances, and may be changed without notice. For more information about these and other important attributes of the product(s) described herein, including recycled content and product warranty information, please see our full LVT product disclaimer at [interface.com](http://interface.com).



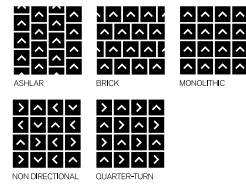
## Specifications

## Criterion Classic™ Wovens Colorline

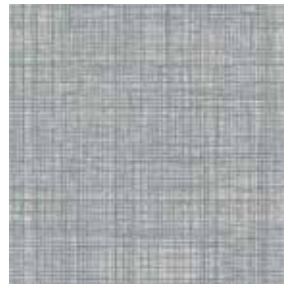
Product Number	C003
Product Construction	High Performance Luxury Vinyl Tile
Class / ASTM F1700	Class III Printed Vinyl Tile
Wear Layer Thickness	22 mil
Total Thickness	3 mm
Backing Class	Commercial Grade
Finish	Ceramor™ Coating
Nominal Dimensions	50 cm x 50 cm (19.69 in x 19.69 in)
Indoor Air Quality	GREENGUARD Gold FloorScore® Certified CDPH 01350 Compliant
Carbon Offsets	Carbon Neutral Floors™
Environmental Certifications	NSF/ANSI 332 Silver
LEED v4	Contributes to IEO: <i>Low Emitting Materials</i> ; M&R: <i>EPD</i> and <i>EPR</i>

Installation Methods: Ashlar, Brick, Monolithic, Non Directional, Quarter-Turn

**\*Now with Recycled Content** View the full product specification on [interface.com](http://interface.com) for details



C00301 FLAX



C00302 TWINE



All product specifications reflect averages derived from product sample testing, are subject to normal manufacturing and testing tolerances and inherent pattern variances, and may be changed without notice. For more information about these and other important attributes of the product(s) described herein, including recycled content and product warranty information, please see our full LVT product disclaimer at [interface.com](http://interface.com).

LVT PRODUCT CRITERION CLASSIC WOVENS COLOR C00301 FLAX INSTALLED MONOLITHIC  
RUBBER PRODUCT NORAPLAN ENVIRONCARE™ COLOR 7076 COUNTY FAIR



## An Integrated System

Our flooring systems solution of modular carpet, LVT and nora<sup>®</sup> premium rubber offers greater flexibility in choosing the right product for each space in your healthcare facility. And our Criterion LVT is engineered to create a smooth transition to nora rubber - no transition strips required.

### Performance

#### Durability

Our Criterion 3mm LVT planks and squares were designed with the demands of healthcare facilities in mind. With superior static load performance and a 22 mil wear layer with Ceramor™ coating, Criterion can withstand the maintenance protocols and heavy foot and rolling traffic in busy healthcare environments, and we back it with a 15-year warranty for your peace of mind.

#### Easy Maintenance

Simple maintenance saves you time and money. Just microfiber mop regularly and spot clean with a neutral cleaner as needed. With Interface, you can be sure your flooring will look new for years to come.

#### Superior Technical Service

From pre-install through the entire life of your floors, we build lasting connections, supporting your operational needs of today while facing the future of healthcare together.

### Smart Design

#### Less Noise

Evidence-based research notes that noise in a healing environment can increase stress and impact length of stay, making it harder for patients to heal and causing undue operational costs to the health system. Interface's Criterion LVT offers significant impact sound reduction with an IIC (Impact Isolation Class) rating of 56 (6" slab with ceiling), which is higher than traditional LVT options.

#### Move Safely

Criterion LVT's 3mm height is intentionally designed to perfectly match the profile of nora premium rubber flooring. So, you can easily move from Criterion in a patient room to nora rubber in a corridor with no need for transition strips, creating a seamless look on the floor while reducing the potential for slips and falls. Our LVT and nora rubber flooring also meet or exceed Static Coefficient of Friction ASTM D 2047 (dry/wet) for slip resistance.

#### Biophilic Design

Incorporating natural and nature-inspired elements into the healing environment offers well-documented benefits such as reduced stress and lowered blood pressure. In a healthcare environment this benefits patients, caregivers and family alike. Interface's Criterion LVT is available in woodgrain planks, as well as woven and stone squares that pair perfectly with the organic designs of nora premium rubber flooring.





## High Performance from Top to Bottom.

1. *Ceramor.* UV stabilized protective coating with ceramic finish minimizes everyday scratching and scuffing.
2. *Wear Layer.* High quality 22 mil layer enables 15 years of resilience and performance.
3. *Print Film.* Creates visual appeal with beautiful design.
4. *Core Sheet.* Provides durability and stability.
5. *Backing.* Provides resistance to residual indentation.

**Third Party Certification**  
Our Carbon Neutral Floors program is annually verified by a third party.



## Sustainability

### Carbon Neutral Floors™

The flooring products we sell – carpet tile, LVT, and nora rubber sheets and tiles – are carbon neutral across their full product life cycle. We have the lowest carbon footprint in the industry, and when you purchase Interface, you're lowering the carbon footprint of your health system as well.

### Climate Take Back™

We've committed to running our business in a way that reverses global warming and creates a climate fit for life—and we call on others to do the same. Offering Carbon Neutral Floors represents our next step toward a Climate Take Back and supports population health and wellness.

### Sustainability Certifications, Standards and Attributes

Our LVT is GREENGUARD Gold Certified; has an EPD and HPD; meets NSF/ANSI-332 Silver and Green Star PVC best practices guidelines; and is listed in the Mindful Materials database.

