



www.interfacehospitality.com

United States Headquarters

1503 Orchard Hill Road
LaGrange, GA 30240
1.800.336.0225 ext.56511

Canadian Headquarters

233 Lahr Drive
Belleville, ON K8N 5S2
1.800.267.2149 ext.52128

Mexican Headquarters

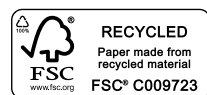
Montes Urales # 415 Piso 6
Col. Lomas de Chapultepec
México City, D.F. 11000
+ 52 55 6395 5100

Latin American Headquarters

Rua Surubim, 577 - Conjuntos
73/74 7º Andar
04571-050 - São Paulo - SP
Brazil
+ 55 11 2196 0900

09/2016
IFS00753

Interface Hospitality



Travel broadly and discover the common craft of making cloth.

World Woven Collection captures the essential themes in fabrics from around the world.

Uncomplicated, hand crafted and imperfect are often the terms of beauty today. In a way, this seems more authentic and more accessible.

Familiar objects conjure a sense of security, comfort and well-being. The World Woven Collection draws heavily from textile patterns and woven structures that embody all these things.

World Woven Collection is Skinny Planks™ and squares, nine styles in eight colors and made with 100% recycled nylon, weaving together our current predilections with memories we share of some of the most enduring textiles of the past—simple, elegant fabrics that keep us warm and lift our spirits.



COVER
PRODUCT: WW890 and WW880
SIZE: 25cm x 1m
COLOR: Brown Dobby and Charcoal Loom
INSTALLATION: Ashlar

PAGE 3
PRODUCT: WW860 and Scottish Set™
SIZE: 25cm x 1m and 50cm x 50cm
COLOR: Flannel, Twesed and Plaid Black
INSTALLATION: Ashlar and Non Directional

A
PRODUCT: WW860
SIZE: 25cm x 1m
COLOR: Natural, Twesed
INSTALLATION: Pattern By Tile

B
PRODUCT: WW895
SIZE: 25cm x 1m
COLOR: Autumn Weave
INSTALLATION: Pattern By Tile

C
PRODUCT: WW890
SIZE: 25cm x 1m
COLOR: Natural Dobby
INSTALLATION: Pattern By Tile



PRODUCT SPECIFICATIONS

WW860 Style: 128190AK00 (25cm x 1m)
Backing System GlasBac® Tile
Yarn System 100% Recycled Content Type 6 Nylon
Yarn Manufacturer Aquafile
Color System 100% Solution Dyed
Construction Tufted Pattern Loop
Lifetime Antimicrobial Intersept®
Soil / Stain Protection Protekt2®
Pile Thickness 0.065 in., 1.7 mm
Pile Density 9,415 oz/yd²
Total Recycled Content 62%
Installation Ashlar, Herringbone
CRI Green Label Plus GLP0820

PRODUCT SPECIFICATIONS

WW895 Style: 128210AK00 (25cm x 1m)
Backing System GlasBac® Tile
Yarn System 100% Recycled Content Type 6 Nylon
Yarn Manufacturer Aquafile
Color System 100% Solution Dyed
Construction Tufted Pattern Loop
Lifetime Antimicrobial Intersept®
Soil / Stain Protection Protekt2®
Pile Thickness 0.116 in., 2.9 mm
Pile Density 9,310 oz/yd²
Total Recycled Content 65%
Installation Ashlar, Herringbone
CRI Green Label Plus GLP0820

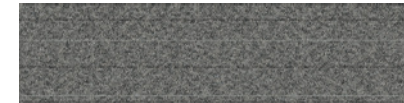
PRODUCT SPECIFICATIONS

WW865 Style: 128210AK00 (25cm x 1m)
Backing System GlasBac® Tile
Yarn System 100% Recycled Content Type 6 Nylon
Yarn Manufacturer Aquafile
Color System 100% Solution Dyed
Construction Tufted Pattern Loop
Lifetime Antimicrobial Intersept®
Soil / Stain Protection Protekt2®
Pile Thickness 0.057 in., 1.4 mm
Pile Density 10,737 oz/yd²
Total Recycled Content 62%
Installation Ashlar, Herringbone
CRI Green Label Plus GLP0820

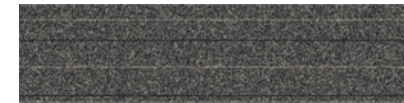
WW860 COLORLINE



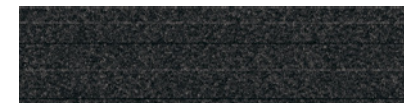
105351 LINEN TWEED



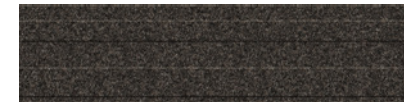
105352 FLANNEL TWEED



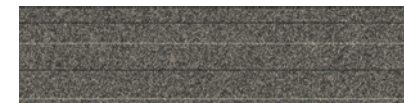
105353 CHARCOAL TWEED



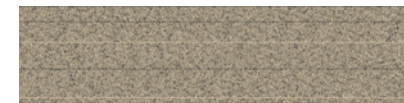
105354 BLACK TWEED



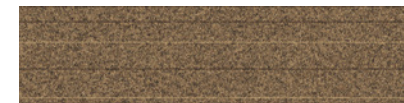
105355 BROWN TWEED



105356 NATURAL TWEED

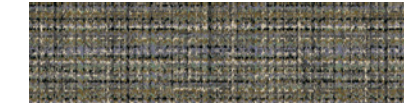


105357 RAFFIA TWEED



105358 SISAL TWEED

WW895 COLORLINE



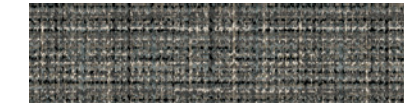
105375 HEATHER WEAVE



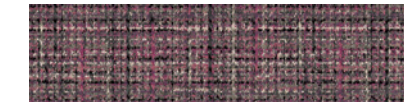
105376 LOCH WEAVE



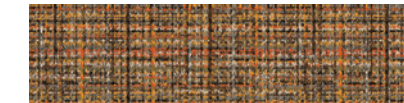
105377 HIGHLAND WEAVE



105378 MOORLAND WEAVE



105379 FUSCHIA WEAVE



105380 AUTUMN WEAVE

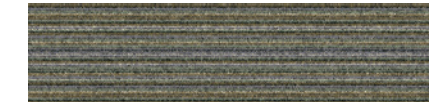


105381 GLEN WEAVE



105382 DALE WEAVE

WW 865 COLORLINE



105367 HEATHER WARP



105368 LOCH WARP



105369 HIGHLAND WARP



105370 MOORLAND WARP



105371 FUSCHIA WARP



105372 AUTUMN WARP



105373 GLEN WARP



105374 DALE WARP

PRODUCT SPECIFICATIONS

WW870

Style: 138930AK00 (25cm x 1m)

Backing System

GlasBac® Tile

Yarn System

100% Recycled Content Type 6 Nylon

Yarn Manufacturer

Aquafil

Color System

100% Solution Dyed

Construction

Tufted Textured Loop

Lifetime Antimicrobial

Intersept®

Soil / Stain Protection

Protekt2®

Pile Thickness

0.104 in., 2.6 mm

Pile Density

7,962 oz/yd²

Total Recycled Content

63%

Installation

Ashlar, Herringbone

CRI Green Label Plus

GLP0820

PRODUCT SPECIFICATIONS

WW880

Style: 128200AK00 (25cm x 1m)

Backing System

GlasBac® Tile

Yarn System

100% Recycled Content Type 6 Nylon

Yarn Manufacturer

Aquafil

Color System

100% Solution Dyed

Construction

Tufted Sheared

Lifetime Antimicrobial

Intersept®

Soil / Stain Protection

Protekt2®

Pile Thickness

0.119 in., 3.0 mm

Pile Density

7,563 oz/yd²

Total Recycled Content

64%

Installation

Ashlar, Herringbone

CRI Green Label Plus

GLP0820

PRODUCT SPECIFICATIONS

WW890

Style: 128240AK0H (25cm x 1m)

Backing System

GlasBac® Tile

Yarn System

100% Recycled Content Type 6 Nylon

Yarn Manufacturer

Aquafil

Color System

100% Solution Dyed

Construction

Tufted Pattern Loop

Lifetime Antimicrobial

Intersept®

Soil / Stain Protection

Protekt2®

Pile Thickness

0.123 in., 3.1 mm

Pile Density

8,780 oz/yd²

Total Recycled Content

65%

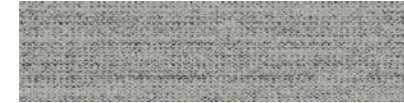
Installation

Ashlar, Herringbone

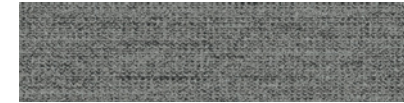
CRI Green Label Plus

GLP0820

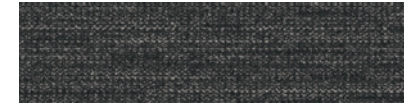
WW870 COLORLINE



105343 LINEN WEFT



105344 FLANNEL WEFT



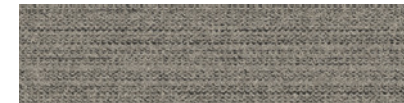
105345 CHARCOAL WEFT



105346 BLACK WEFT



105347 BROWN WEFT



105348 NATURAL WEFT



105349 RAFFIA WEFT

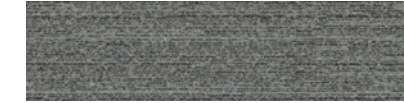


105350 SISAL WEFT

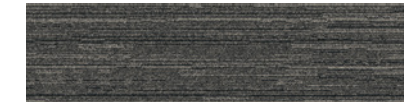
WW880 COLORLINE



105359 LINEN LOOM



105360 FLANNEL LOOM



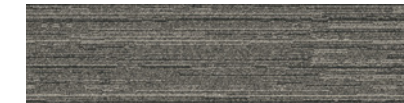
105361 CHARCOAL LOOM



105362 BLACK LOOM



105363 BROWN LOOM



105364 NATURAL LOOM



105365 RAFFIA LOOM

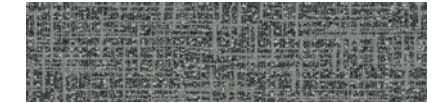


105366 SISAL LOOM

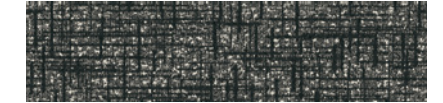
WW890 COLORLINE



105383 LINEN DOBBY



105384 FLANNEL DOBBY



105385 CHARCOAL DOBBY



105386 BLACK DOBBY



105387 BROWN DOBBY



105388 NATURAL DOBBY



105389 RAFFIA DOBBY



105390 SISAL DOBBY

A
PRODUCT: WW870
SIZE: 25cm x 1m
COLOR: Charcoal Weft
INSTALLATION: Pattern By Tile

B
PRODUCT: Collins Cottage™
SIZE: 50cm x 50cm
COLOR: Hound Charcoal
INSTALLATION: Pattern By Tile

C
PRODUCT: WW870
SIZE: 25cm x 1m
COLOR: Raffia Weft
INSTALLATION: Pattern By Tile

D
PRODUCT: WW895
SIZE: 25cm x 1m
COLOR: Fuchsia Weave
INSTALLATION: Pattern By Tile



A
PRODUCT: WW895
SIZE: 25cm x 1m
COLOR: Moorland Weave
INSTALLATION: Ashlar



PRODUCT SPECIFICATIONS

Collins Cottage™ Style: 1282302500 (50cm x 50cm)
Backing System GlasBac® Tile
Yarn System 100% Recycled Content Type 6 Nylon
Yarn Manufacturer Aquaflil
Color System 100% Solution Dyed
Construction Loop Pile
Lifetime Antimicrobial Intersept®
Soil / Stain Protection Protekt2®
Pile Thickness 0.145 in., 3.7 mm
Pile Density 6,455 oz/yd ²
Total Recycled Content 64%
Installation Ashlar, Herringbone
CRI Green Label Plus GLP0820

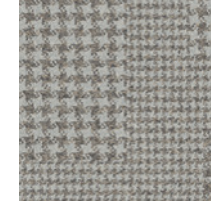
PRODUCT SPECIFICATIONS

Mod Café™ Style: 1282802500 (50cm x 50cm)
Backing System GlasBac® Tile
Yarn System 100% Recycled Content Type 6 Nylon
Yarn Manufacturer Aquaflil
Color System 100% Solution Dyed
Construction Loop Pile
Lifetime Antimicrobial Intersept®
Soil / Stain Protection Protekt2®
Pile Thickness 0.121 in., 3.1 mm
Pile Density 8,628 oz/yd ²
Total Recycled Content 65%
Installation Ashlar, Herringbone
CRI Green Label Plus GLP0820

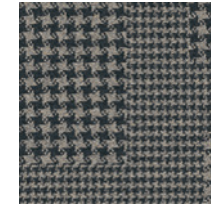
PRODUCT SPECIFICATIONS

Scottish Sett™ Style: 1283002500 (50cm x 50cm)
Backing System GlasBac® Tile
Yarn System 100% Recycled Content Type 6 Nylon
Yarn Manufacturer Aquaflil
Color System 100% Solution Dyed
Construction Loop Pile
Lifetime Antimicrobial Intersept®
Soil / Stain Protection Protekt2®
Pile Thickness 0.143 in., 3.6 mm
Pile Density 7,301 oz/yd ²
Total Recycled Content 65%
Installation Ashlar, Herringbone
CRI Green Label Plus GLP0820

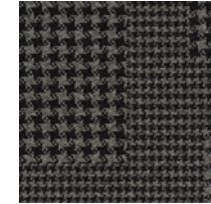
COLLINS COTTAGE COLORLINE



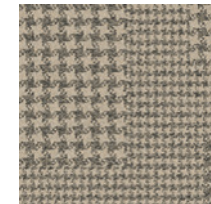
105413
HOUND LINEN



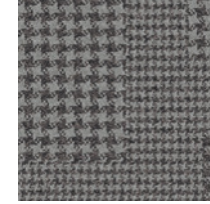
105415
HOUND CHARCOAL



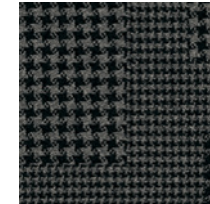
105417
HOUND BROWN



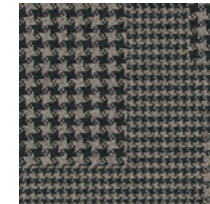
105419
HOUND RAFFIA



105414
HOUND FLANNEL



105416
HOUND BLACK



105418
HOUND NATURAL

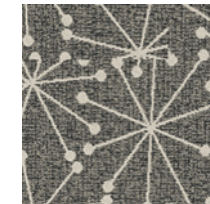


105420
HOUND SISAL

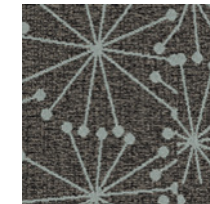
MOD CAFÉ COLORLINE



105421
STAR LINEN



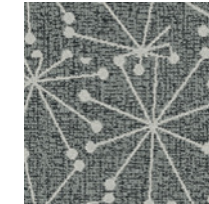
105423
STAR CHARCOAL



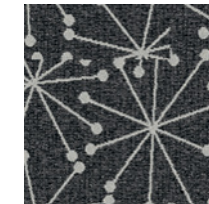
105425
STAR BROWN



105427
STAR RAFFIA



105422
STAR FLANNEL



105424
STAR BLACK

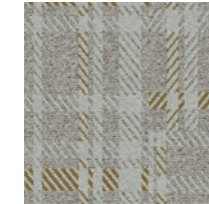


105426
STAR NATURAL

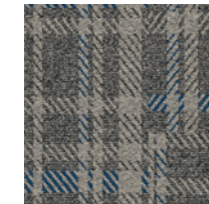


105428
STAR SISAL

SCOTTISH SETT COLORLINE



105429
PLAID LINEN



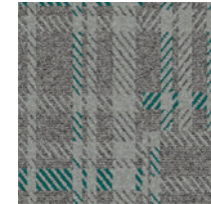
105431
PLAID CHARCOAL



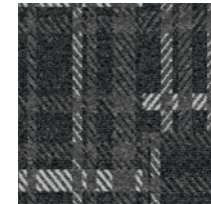
105433
PLAID BROWN



105435
PLAID RAFFIA



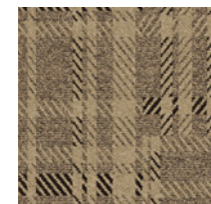
105430
PLAID FLANNEL



105432
PLAID BLACK



105434
PLAID NATURAL



105436
STAR SISAL

A
 PRODUCT: WW865
 SIZE: 25cm x 1m
 COLOR: Glen View
 INSTALLATION: Pattern by Tile

B
 PRODUCT: WW890
 SIZE: 25cm x 1m
 COLOR: Raffia Dobby
 INSTALLATION: Pattern by Tile

C
 PRODUCT: WW880
 SIZE: 25cm x 1m
 COLOR: Natural Loom
 INSTALLATION: Pattern by Tile

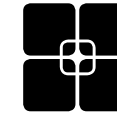


WHY MODULAR CARPET TILE?



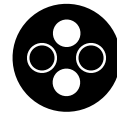
Flexibility

Keep Your Floor Beautiful. Modular carpet tile allows you to play with pattern and design without having to special order carpet sizes. And the same flexibility that lets you create your floor helps you keep it looking good because in-house staff can easily replace individual tiles that become damaged or heavily soiled—no down time or outside contractors required.



TacTiles®

No Glue Installation. Installation or reconfiguration with our glue-free TacTiles installation system means there's no glue smell and no drying time. Guests can use the room as soon as the last piece is laid and all they'll notice is a beautiful floor.



Intersept®

Mold Protection. No matter what's spilled on the floor, our proprietary preservative, Intersept®, protects our modular carpet against the growth of odor-causing bacteria—guaranteed. With proper maintenance Intersept treated carpet safely and effectively inhibits the growth of mold and other bacteria so your floors are always fresh.



Less Waste

Save Money. Interface Hospitality's carpet tile averages just 3.9% installation waste compared to as much as 18% or more with patterned roll carpet. Use our non directional styles with an average of 1.5% waste and save even more. That means more of your flooring investment stays on the floor—not in a dumpster.



Sustainable Choice

Environmental Responsibility. Interface was the industry's first to earn an EPD (Environmental Product Declaration), which evaluates consistent factors based on full lifecycle assessment (LCA). In addition, all of our products with GlasBac®, GlasBacRE and NexStep® backings meet NSF/ANSI 140 Sustainable Assessment for Carpet.



InterComfort™

Comfort underfoot. Offer guests the additional comfort and acoustical benefits of a cushion underlay with InterComfort, Interface Hospitality's cushion that installs easily and prevents damage to your subfloor. InterComfort is available in two formats—InterComfort PS+ for public spaces and InterComfort GR for guest rooms.

cool carpet™



Cool Carpet™
 Our third party verified carbon offset program zeroes out all greenhouse gas (GHG) emissions associated with the entire lifecycle of your carpet.

Sustainable Assessment for Carpet
 The only carpet sustainability standard in North America that evaluates the environmental impact of carpet for its entire lifecycle.

CRI Green Label Plus
 An independent testing program that identifies carpet and adhesives with very low emissions of VOCs to help improve indoor air quality.

Environmental Product Declaration (EPD)
 A statement of product ingredients and environmental impacts over the entire lifecycle of a product. A comprehensive life cycle assessment (LCA) is performed to ISO standards to develop an EPD, after which both the EPD and the LCA must be third party verified.