



# Crafted Surface | **M** MODULAR

HEIRLOOM TWEED / OVERLAYER / TAPIS

HEIRLOOM TWEED + OVERLAYER in charcoal fringe / TAPIS in turkish teal / installation in herringbone



CRAFTED SURFA

Interdeco™

TAPIS in artisan emerald /  
installation in monolithic

CRAFTED SURFACE



HEIRLOOM TWEED in charcoal fringe

OVERLAYER in charcoal fringe /  
installation in herringbone



CRAFTED SURFA



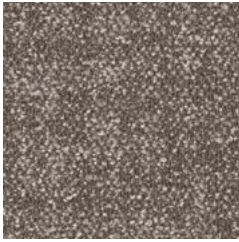
CRAFTED SURFACE



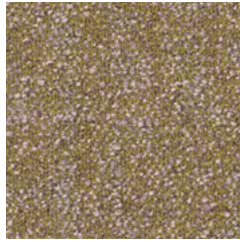
Interdeco™

OVERLAYER in turkish teal / installation in stagger

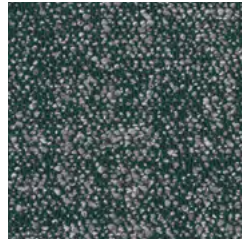
# COLORWAYS 10549 | HEIRLOOM TWEED



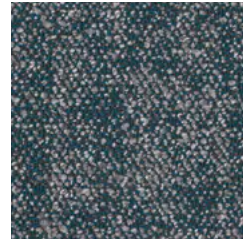
00150 antique beige



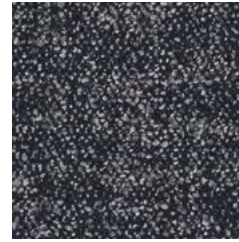
00280 yellow silk



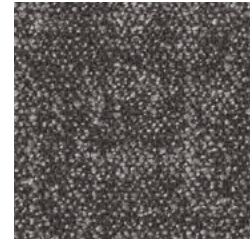
00350 artisan emerald



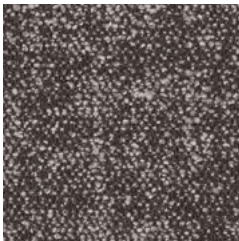
00430 turkish teal



00490 navy motif



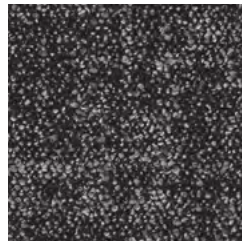
00530 shadow loop



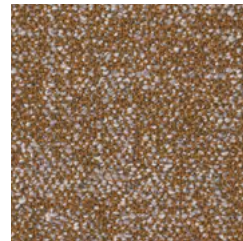
00540 taupe tuff



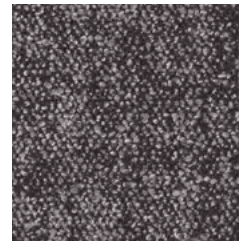
00570 charcoal fringe



00590 black wool



00620 rust wash

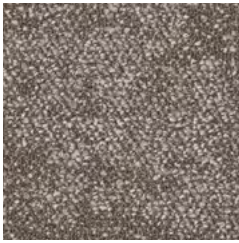


00770 sepia weave

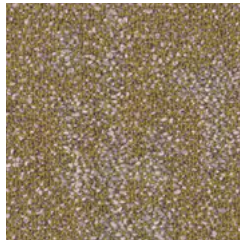


00790 vintage umber

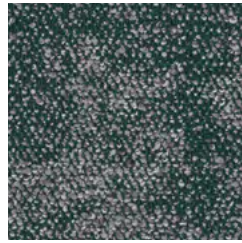
# COLORWAYS 10550 | OVERLAYER



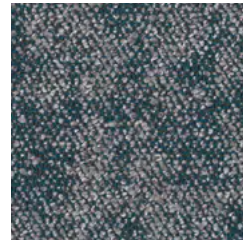
00150 antique beige



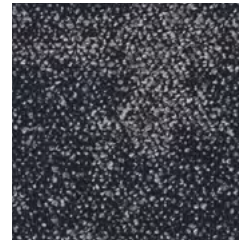
00280 yellow silk



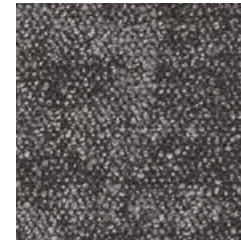
00350 artisan emerald



00430 turkish teal



00490 navy motif



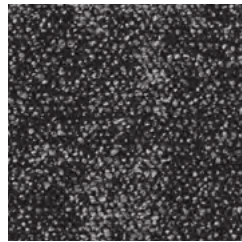
00530 shadow loop



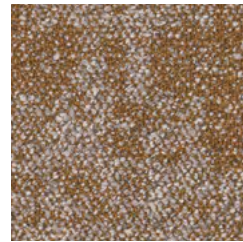
00540 taupe tuft



00570 charcoal fringe



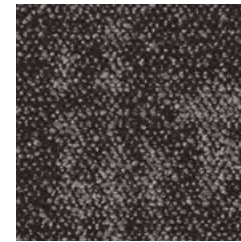
00590 black wool



00620 rust wash



00770 sepia weave

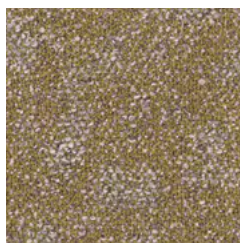


00790 vintage umber

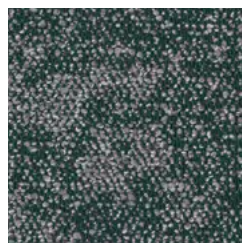
# COLORWAYS I0551 | TAPIS



00150 antique beige



00280 yellow silk



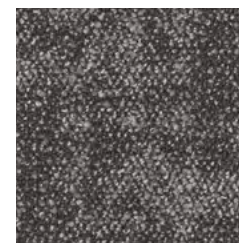
00350 artisan emerald



00430 turkish teal



00490 navy motif



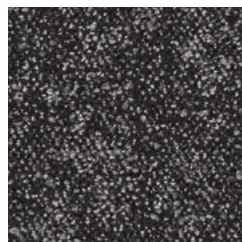
00530 shadow loop



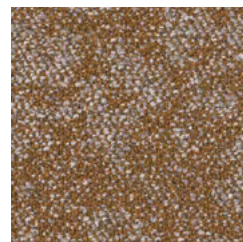
00540 taupe tuft



00570 charcoal fringe



00590 black wool



00620 rust wash



00770 sepia weave



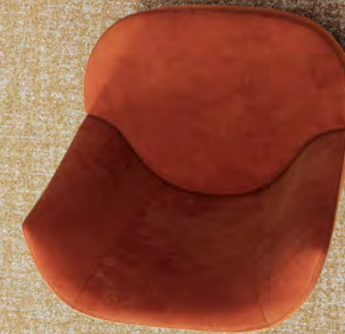
00790 vintage umber



CARBON NEUTRAL

&

NEW ECOSOLUTION Q100™ YARN  
+ ECOWORX® BACKING  
= **LOWER, OVERALL EMBODIED  
CARBON FOOTPRINT**





HEIRLOOM TWEED + OVERLAYER in charcoal fringe /  
TAPIS in turkish teal / installation in herringbone

For full specifications and color, please [visit this collection on the website.](#)

## PRODUCT SPECIFICATIONS

CRAFTED SURFACE | modular

### HEIRLOOM TWEED

style / 10549

product size	18 in x 36 in   45.72 cm x 91.44 cm
gauge	1/12   47.24 per 10 cm
tufted yarn weight	22 oz/yd <sup>2</sup>   745.95 g/m <sup>2</sup>
stitches	9.8 per inch   38.71 per 10 cm
fiber type	Eco Solution Q100™ Nylon
embodied GWP	4.9 kgCO <sub>2</sub> e
backing type	EcoWorx® Tile

### OVERLAYER

style / 10550

product size	18 in x 36 in   45.72 cm x 91.44 cm
gauge	1/12   47.24 per 10 cm
tufted yarn weight	22 oz/yd <sup>2</sup>   745.95 g/m <sup>2</sup>
stitches	9.8 per inch   38.71 per 10 cm
fiber type	Eco Solution Q100™ Nylon
embodied GWP	4.9 kgCO <sub>2</sub> e
backing type	EcoWorx® Tile

### TAPIS

style / 10551

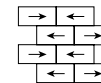
product size	18 in x 36 in   45.72 cm x 91.44 cm
gauge	1/12   47.24 per 10 cm
tufted yarn weight	22 oz/yd <sup>2</sup>   745.95 g/m <sup>2</sup>
stitches	9.8 per inch   38.71 per 10 cm
fiber type	Eco Solution Q100™ Nylon
embodied GWP	4.9 kgCO <sub>2</sub> e
backing type	EcoWorx® Tile

## INSTALLATION METHODS

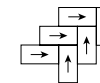
MONOLITHIC



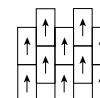
BRICK



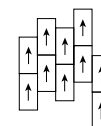
HERRINGBONE



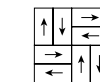
ASHLAR



STAGGER



BASKETWEAVE



OFFSET



BOXED IN



HALF BASKETWEAVE

