



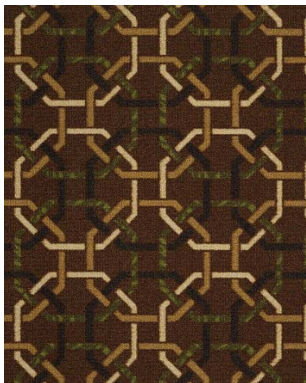
34310 Mavericks



34400 Harness



34500 Asher



34710 Gaff



34800 Ossel

Interdecò

Style Name	INS AND OUTS	
Collection Name	Natural Element	
Style Number	54534	
Product Type	Broadloom	
Construction	Graphic Loop	
Fiber	Eco Solution Q® Nylon Print	
Dye Method	Printed	
Primary Backing	Synthetic	
Secondary Backing	Classicbac	
Traffic Rating	Severe	
Protective Treatments	R2X	
	U.S.	Metric
Product Size	12 ft	3.66 m
Gauge	1/10 in	3937 per 10 cm
Stitches	11 per in	45 per 10 cm
Finished Pile Thickness	0.156 in	3.96 mm
Average Density	6462 oz/yd ³	
Total Thickness	0.311 in	7.9 mm
Tufted Weight	28 oz/yd ²	949.4 g/m ²
Pattern Repeat	1 ft W X 1 ft L	30.48 cm W X 30.48 cm L

Recommended Installation Methods

Direct Glue

Performance Testing

Pill Test	Pass
Radiant Panel	Class I
NBS Smoke	Less than 450
Electrostatic Propensity	Less than 3.5 kv
CRI Greenlabel Plus	GLP8878
ADA Compliance	>0.6, meets the recommended static coefficient of friction for ADA walking surfaces and accessible routes

Test Reports may be included or listed by the manufacturing/inventory style number as opposed to the noted selling style number.

Warranties

Eco Solution Q Nylon (print base) Classicbac Twenty Year Commercial Limited Warranty

Environmental

Recycled Content **Pre-consumer - <1%, Post-consumer - 0%**

Specifications are subject to nominal manufacturing variance. Material supply and/or manufacturing processes may necessitate changes without notice.