



Interdeco™

Mixology

Posture | Clever Class



Mohawk Group's Scratch Art Design Contest solicited the artistic talents of K-12 students nationwide to create the next design in Mohawk's Mixology Collection. A panel of seasoned carpet designers chose the best of the best from the extensive pool of creative submissions. Andi Rozelle of Holy Spirit Preparatory School in Atlanta was selected as the winner of the competition. Her dynamic design translated beautifully into the newest Mixology pattern, Posture. Carpet tile featuring Andi's original design was donated back to her school library where it has created a brighter learning environment for all who encounter and interact with the space.



Cover: Posture 989 Black Velvet (Vertical Ashlar Installation)



Posture 989 Black Velvet (Vertical Asflar Installation)



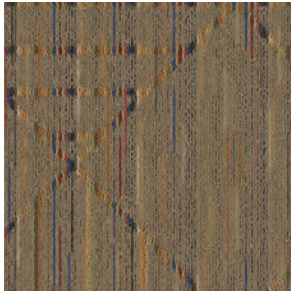


Clever Class 989 Black Velvet (Vertical Ashlar Installation)  
Opposite: Clever Class 989 Black Velvet (Horizontal Ashlar Installation)

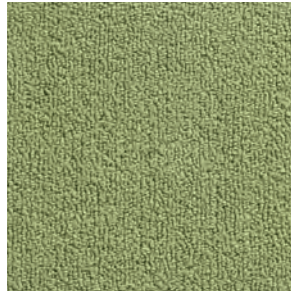


## Colorways and Coordinates

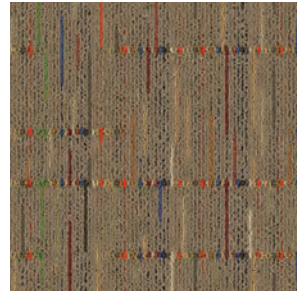
Each Mixology Pattern, Clever Class and Posture, has a guaranteed accent stripe that coordinates directly with our ColorBeat solid, all loop textured tiles. ColorBeat is available in a total of 48 colors as 24x24 tiles with select colors available as 12x36 planks so don't let our recommendations limit your creativity. Install ColorBeat as a border, inset or accent tile.



Clever Class 131 Madras



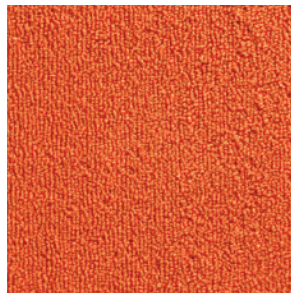
ColorBeat 646 Parakeet



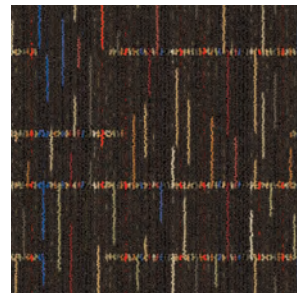
Posture 131 Madras



Clever Class 878 Mudslide



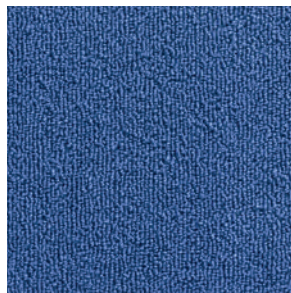
ColorBeat 252 Electric Orange



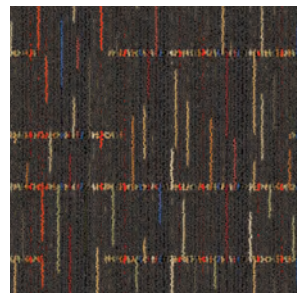
Posture 878 Mudslide



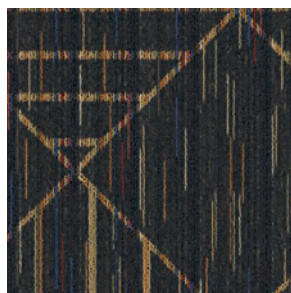
Clever Class 968 Smoky Martini



ColorBeat 555 Moroccan Tile



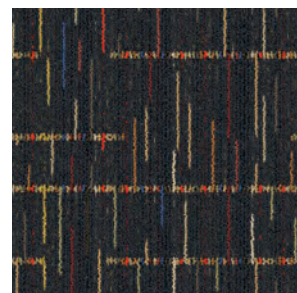
Posture 968 Smoky Martini



Clever Class 585 Sea Breeze



ColorBeat 142 Ground Turmeric



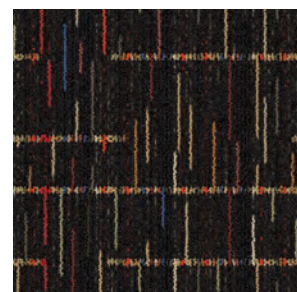
Posture 585 Sea Breeze



Clever Class 989 Black Velvet



ColorBeat 353 Tango



Posture 989 Black Velvet

# Mixology

The styles in our Mixology Collection were designed to celebrate the breadth of color available in today's carpet market while providing the customer with the simplest installation and flooring management possible. The patterns are composed of 5 of the most popular neutral colors mixed in with a kaleidoscope of randomly chosen end-of-lot yarns. These multi-colored yarns are diverted from our excess yarn lots and given new life in strikingly beautiful carpet rather than being down-cycled into other industry products. The beauty of this product is in the fact that the embedded pattern and the neutral color remain consistent from tile to tile while the accent colors change, making each tile unique. It is this subtle color variation that contributes to the ease of installation by eliminating concerns about matching dye lots and limited installation methods. The Mixology Collection is the perfect solution for those seeking to celebrate color as well as those who recognize the positive environmental impact that comes from redefining beautiful with repurposed yarn.

## FEATURES

---

- No 2 tiles are alike but work flawlessly together on your floor
- All installation methods available
- Diverting useful materials from the waste stream is good for the environment
- All styles are available in Quickship





# Matuto Plus Stone COORDINATING LVT

Named after the Filipino word for “teacher,” Matuto Plus Stone features eye-catching colors that energize the space and stimulate creativity. Mix and match across the palette of the most popular school colors in the US – from fresh, youthful brights to an array of clean grounded neutrals.



## Matuto Plus Stone Colorways



646A Green Grass Stone



656A Botany Stone



556A Mega Blue Stone



555A Blue Night Stone



599A Deep Sea Stone



454A Wizard Stone



353A Red Hot Stone



252A Outrageous Orange Stone



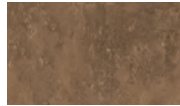
131A Lemon Twist Stone



123A Barely Beige Stone



752A Nutshell Stone



858A Bronze Blast Stone



959A Grey Granite Stone



927A Sonic Silver Stone



926A Agreeable Grey Stone



915A Frostbite Stone

### CONSTRUCTION

The 12"x 24" tiles are designed with a versatile concrete style visual and embossed texture, especially relevant in schools, healthcare settings and retail spaces.

### PERFORMANCE

The 20 mil commercial wear layer coated with a M-Force™ Ultra finish provides durability and cleanability with a no-polish option that allows for cost-effective maintenance.

### COLOR

Mix and match across the palette of the most popular school colors in the US – from fresh, youthful brights to an array of clean grounded neutrals.





# Transparency SUSTAINABLE LEADERSHIP

Mohawk Group leads the building products industry in transparency with the largest selection of products with Declare Labels, Health Product Declarations (HPDs), and Environmental Product Declarations (EPDs). What's more, we offer over 500 Red List Free Declared products.




## OUR COMMITMENT

As a Gaia sponsor of the International Living Future Institute (ILFI), we are committed to revolutionary programs that are redefining the green building movement. These include the ILFI's Living Building Challenge and Declare programs.

Declare Labels are a 'nutrition label' for the building industry, providing ingredients, source and manufacturing locations. We offer you:

- The most products with Declare Labels
- The most Red List Free products

We have eliminated the mystery of product ingredients so you get total product transparency.\*



**Nylon Modular Tile on EcoFlex Matrix  
Mohawk Group**

**Final Assembly:** Glasgow, VA, USA  
**Life Expectancy:** 15 Years  
**End of Life Options:** Take Back Program (Various Locations), Recyclable

**Ingredients:**

**Coating:** Ethylene-Propylene Copolymer, Butadiene Acrylate, Ammonium Lauryl Sulfate, Carbon Black Amorphous, Calcium Carbonate, Limestone, Polypropylene, Tris(2,4-Di-Tert-Butylphenyl) Phosphite, Sodium Polyacrylate Thickener, 2,5-Furandione, Polymer with Ethene and 1-Propene; **Primary:** Polyethylene Terephthalate, Propylene Homopolymer; **Scrim:** Filament Glass Fibers, Polyester, Nylon 6, Carbon Black Amorphous; **Yarn:** Nylon 6, Nylon 6,6, Titanium Dioxide; **Topical:** 2-Propenoic Acid, 2-Methyl-, Butyl Ester, Polymer with Butyl 2-Propenoate and Methyl 2-Methyl-2-Propenoate, Potassium Lauryl Phosphate, 4,4-Dihydroxydiphenylsulfone-Formaldehyde-p-Phenolsulfonic Acid Copolymer

**Living Building Challenge Criteria:**

MHK-0016	Exp. 01 NOV 2018
VOC Content: N/A	VOC Emissions: CDPH Compliant
<b>Declaration Status</b>	<input checked="" type="checkbox"/> LBC Red List Free
	<input type="checkbox"/> LBC Compliant
	<input type="checkbox"/> Declared

MANUFACTURER RESPONSIBLE FOR LABEL ACCURACY  
INTERNATIONAL LIVING FUTURE INSTITUTE™ [declareproducts.com](http://declareproducts.com)

Mohawk Group utilizes multiple platforms for disclosing our transparency information, including Mindful Materials and the Declare Database.\*



\*Transparency documentation can be found at [mohawkgroup.com](http://mohawkgroup.com)



# Elemental Edges

FINISHING ACCESSORIES

At Mohawk Group we believe in providing project solutions that are easy to select and readily available. Elemental Edges is a complete portfolio of free-to-ship accessories for all your flooring installation and finishing needs. The program is offered in 14 QuickShip colors that coordinate perfectly with our full suite of soft and hard surface products.

Interdeco™



## Wall Base

Seamlessly coordinate your wall base and Mohawk Group floor covering from our variety of QuickShip wall base offerings.

### AVAILABLE IN

- Rubber
- Vinyl
- 4" or 6" in height
- Coved or straight
- 4' lengths or 96' & 120' rolls
- 1/8" gauge
- .080" gauge (4" Cove vinyl)

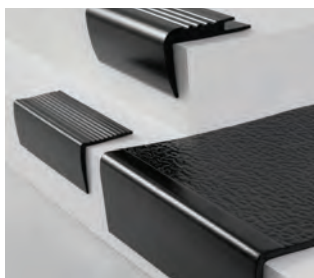


## Installation Accessories

Add a functional finishing touch to your coordinated color scheme with Mohawk Group installation accessories. Proprietary Rubber formulations are shrink and crack-proof, and won't fade, even in direct sunlight.

### CHOOSE FROM

- Universal Transitions
- Reducers
- Cove Stick
- Adaptors
- Stair Solutions



## Stair Solutions

Specify 12.5" regular tread or 20" integrated tread/riser, available in 48" and 72" lengths. Round and hammered finishes are available with standard square nose. All profiles are available with or without visually impaired strips.

### CHOOSE FROM

- Stair Treads
- Resilient Landing Tiles
- Risers
- Nosings

# Specifications

Posture BT407 / QB407  
Clever Class BT408 / QB408

## DESIGN

Size	24" x 24" (.6096m x .6096m)
Surface Appearance	Textured Patterned Loop
Fiber Type	Colorstrand® Nylon
Dye Method	Solution Dyed / Yarn Dyed
Installation Methods	Monolithic / Quarter Turn / Brick Ashlar / Vertical Ashlar / Multi-Directional
Colors Available	5

## PERFORMANCE

Construction	Tufted
Gauge	1/12" (47.00 rows per 10cm)
Stain Release Technology	EcoSentry Plus Stain Protection
Soil Release Technology	EcoSentry Soil Protection
Backing Material	EcoFlex Matrix
Flammability	ASTM E 648 - Class 1 (Glue Down)
Smoke Density	ASTM E 662 - Less than 450
Static Propensity	AATCC - 134 Under 3.5 KV

## SUSTAINABILITY

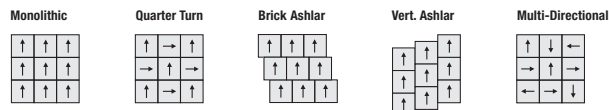
Certification	Living Product Challenge Petal Certified; Declared
Indoor Air Quality	Green Label Plus #1171
NSF 140	Gold

## SERVICE

Warranties	Lifetime Limited Carpet Tile Warranty, Lifetime Static
------------	--



Installation Instructions:



Mohawk Group warrants its adhesives for the life of the original installation only when a Mohawk Group style (product) is installed. Mohawk's floor preparation procedures must be followed to ensure that the substrate has been prepared properly. Failure to use Mohawk Group adhesives or to follow Mohawk's floor preparation procedures will void all lifetime adhesive warranties. Please contact your local Sales Representative for installation guidelines.

**These patterns contain inherent characteristics which may result in pattern run off and/or pattern appearance variations at the seams or tile edges (darker or lighter pattern lines). These characteristics are inherent in the patterns and are not manufacturing defects. Consideration to these characteristics should be given when selecting an installation method.**

Chair pads are recommended under office chairs with roller casters to preserve appearance retention, act as a deterrent toward delamination and to prevent premature or accelerated wear. Walk-off tiles from the Tuff Stuff II Collection are recommended at entryways to reduce soiling.

Mohawk Group is providing this architect folder for the purpose of promoting our commercial business. This folder and its samples shall remain the property of Mohawk Group. Color may vary from dye lot to dye lot. Substitution of material may be made due to improved technology, supply limitations or other factors. The performance of this product is not affected by such variations.

For current and complete specifications please visit [www.mohawkgroup.com](http://www.mohawkgroup.com)



Produced with recycled materials

Mohawk Group

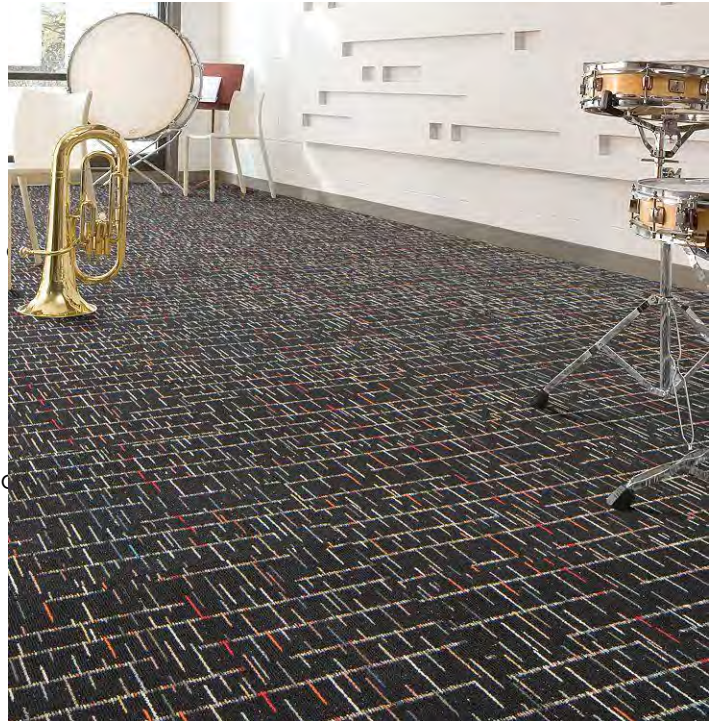
Mohawk Group  
160 South Industrial Blvd.  
Calhoun, GA. 30701  
1-800-554-6637  
mohawkgroup.com

QSMPC PHOTO BOOK LT



# Posture

Collection	Mixology
Style Name	Posture
Style Number	BT407
Product Type	Carpet Tile
Size	24" X 24"
Construction	Tufted
Installation	Monolithic, Vertical Ashlar, Brick Ashlar,

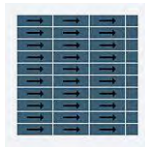


Feature	Description
Backing Material	EcoFlex Matrix
Fiber Type	ColorStrand® Nylon
Dye Method	Solution Dyed / Yarn Dyed
Installation Methods	Monolithic, Vertical Ashlar, Brick Ashlar, C
Stitches per Inch	11.5 (45.28 per 10cm)
Density	6442
Tufted Pile Weight	17.00 oz/yd2 (576 g/m2)
Surface Texture	Textured Patterned Loop

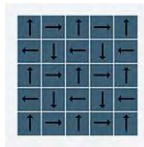
## Recommended Installation Methods



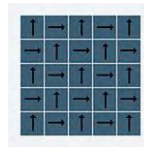
Brick Ashlar



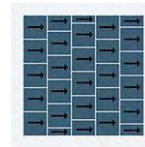
Monolithic



Multi-Directional



Quarter Turn



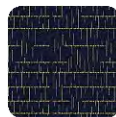
Vertical Ashlar

## Colorways



### Madras

Color code: 131  
Style number: BT407



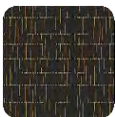
### Sea Breeze

Color code: 585  
Style number: BT407



### Mudslide

Color code: 878  
Style number: BT407



### Smoky Martini

Color code: 968  
Style number: BT407



### Black Velvet

Color code: 989  
Style number: BT407

## Performance

Feature	Description
Gauge	1/12 (47.00 rows per 10 cm)
Foot Traffic Recommendation TARR	Severe
Flammability	ASTM E 648 Class 1 (Glue Down)
Smoke Density	ASTM E 662 Less than 450
Static Propensity	AATCC-134 Under 3.5 KV
Soil Release Technology	EcoSentry Soil Protection

## Sustainability

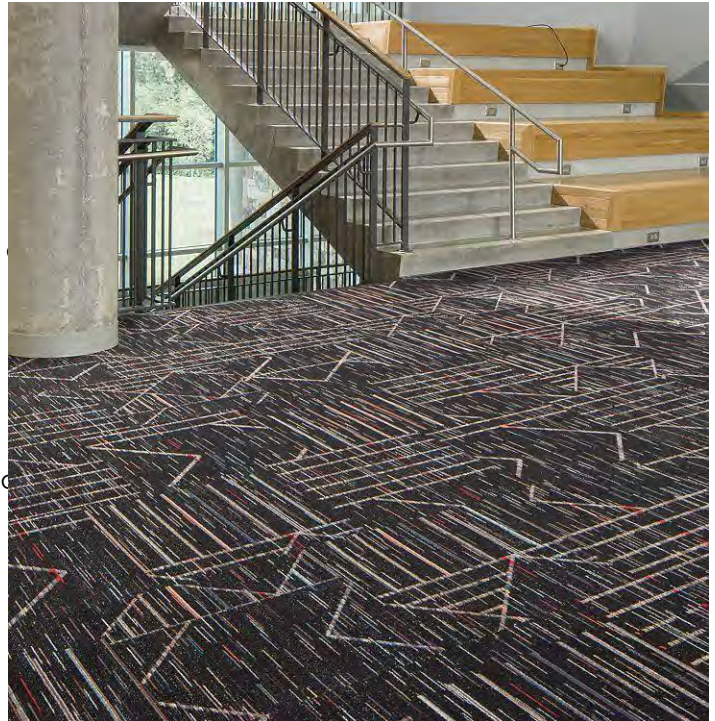
Feature	Description
Beyond Carbon Neutral	This product is 100% carbon neutral plus an additional 5% offset
Carbon Handprint	-0.057 kg CO2e/ft2
Embodied Carbon	1.14 kg CO2e/ft2
Total Recycled Content	48%
Pre-Consumer Recycled Content	48%
NSF 140	<a href="#">EcoFlex Matrix - NSF 140 Gold</a>
Indoor Air Quality	<a href="#">GLP 1171</a>
TVOC Range	0.5 mg/m3 or less
Red List Free	True
Declare Label	Nylon Modular Carpet on EcoFlex Matrix
Mindful Materials	Participates in Mindful Materials Library
Take Back Program	<a href="#">ReCover Program</a>
Health Product Declaration	<a href="#">HPD 2.1 EcoFlex Matrix - 1000 ppm</a>
Environmental Claims Validation	<a href="#">EPD EcoFlex Matrix</a>
LEED Credit Potential	LEED Eligible

## Warranties

Lifetime Limited Carpet Tile Warranty, Lifetime Static

## Clever Class

Collection	Mixology
Style Name	Clever Class
Style Number	BT408
Product Type	Carpet Tile
Size	24" X 24"
Construction	Tufted
Installation	Monolithic, Vertical Ashlar, Brick Ashlar,

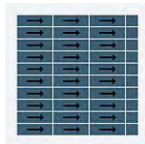


Feature	Description
Backing Material	EcoFlex Matrix
Fiber Type	ColorStrand® Nylon
Dye Method	Solution Dyed / Yarn Dyed
Installation Methods	Monolithic, Vertical Ashlar, Brick Ashlar, C
Stitches per Inch	12 (47.24 per 10cm)
Density	6442
Tufted Pile Weight	17.00 oz/yd2 (576 g/m2)
Surface Texture	Textured Patterned Loop

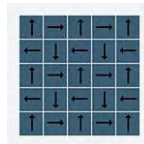
## Recommended Installation Methods



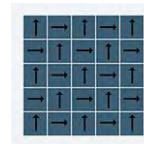
Brick Ashlar



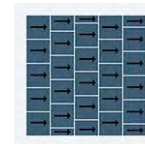
Monolithic



Multi-Directional



Quarter Turn



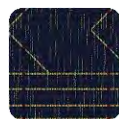
Vertical Ashlar

## Colorways



### Madras

Color code: 131  
Style number: BT408



### Sea Breeze

Color code: 585  
Style number: BT408



### Mudslide

Color code: 878  
Style number: BT408



### Smoky Martini

Color code: 968  
Style number: BT408



### Black Velvet

Color code: 989  
Style number: BT408

## Performance

Feature	Description
Gauge	1/12 (47.00 rows per 10 cm)
Foot Traffic Recommendation TARR	Severe
Flammability	ASTM E 648 Class 1 (Glue Down)
Smoke Density	ASTM E 662 Less than 450
Static Propensity	AATCC-134 Under 3.5 KV
Soil Release Technology	EcoSentry Soil Protection



## Sustainability

Feature	Description
Beyond Carbon Neutral	This product is 100% carbon neutral plus an additional 5% offset
Carbon Handprint	-0.057 kg CO2e/ft2
Embodied Carbon	1.14 kg CO2e/ft2
Total Recycled Content	48%
Pre-Consumer Recycled Content	48%
NSF 140	<a href="#">EcoFlex Matrix - NSF 140 Gold</a>
Indoor Air Quality	GLP 1098
TVOC Range	0.5 mg/m3 or less
Red List Free	True
Declare Label	Nylon Modular Carpet on EcoFlex Matrix
Mindful Materials	Participates in Mindful Materials Library
Take Back Program	<a href="#">ReCover Program</a>
Health Product Declaration	<a href="#">HPD 2.1 EcoFlex Matrix - 1000 ppm</a>
Environmental Claims Validation	<a href="#">EPD EcoFlex Matrix</a>
LEED Credit Potential	LEED Eligible

## Warranties

Lifetime Limited Carpet Tile Warranty, Lifetime Static