

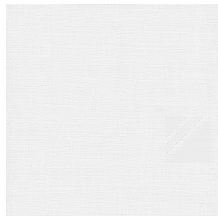
# SOLAR VX SCREEN 3000 3%

## Especificaciones

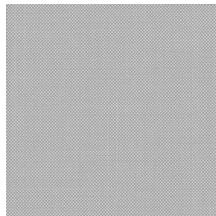
Tipo de producto	enrollable, romana, panel
Tipo de fibra	30% poliéster / 70% PVC
Peso de fibra	12.98oz/yda2 (440g/m2)
Ancho del rollo	98" (2,50m)
Factor de apertura	3%
Bloqueo de UV	97%
Recomendación	uso interior



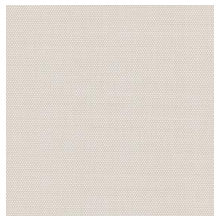
## Colores disponibles



white



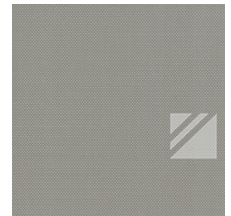
white pearl



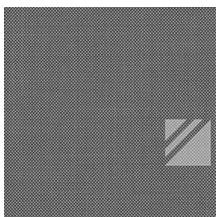
white linen



linen



taupe



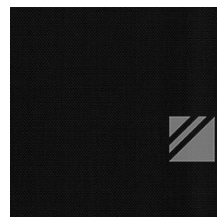
ebony pearl



chestnut



brown chocolate



ebony

