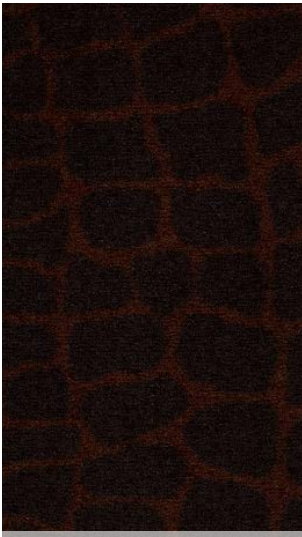
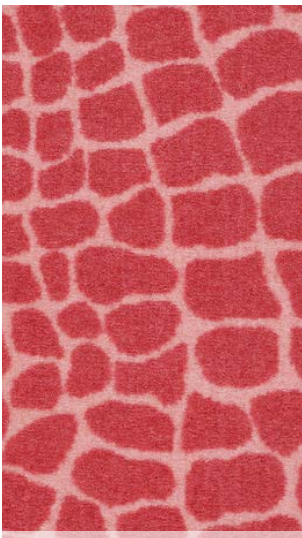


6310 Hidden Moss



6710 Floater



6802 Sunbathe



6501 Lounge Around

Style Name	RIVER CROC	
Collection Name	Call Of The Wild	
Style Number	54506	
Product Type	Broadloom	
Construction	Cut Pile Print	
Fiber	Eco Solution Q [®] Nylon Print	
Dye Method	PRINTED	
Primary Backing	Synthetic	
Secondary Backing	Classicbac	
Traffic Rating	Light	
Protective Treatments	R2X	
	U.S.	Metric
Product Size	12 ft	3.66 m
Gauge	1/10 in	39.37 per 10 cm
Stitches	12 per in	47 per 10 cm
Finished Pile Thickness	0.186 in	4.72 mm
Average Density	3484 oz/yd ³	
Total Thickness	0.313 in	7.95 mm
Tufted Weight	18 oz/yd ²	610.3 g/m ²
Pattern Repeat	3 ft W X 2 ft L	91.44 cm W X 60.96 cm L



Recommended Installation Methods

Direct Glue

Performance Testing

Pill Test	Pass
Radiant Panel	Class I
NBS Smoke	Less than 450
CRI Greenlabel Plus	GLP8878
ADA Compliance	>0.6, meets the recommended static coefficient of friction for ADA walking surfaces and accessible routes

Test Reports may be included or listed by the manufacturing/inventory style number as opposed to the noted selling style number.

Warranties

Eco Solution Q Nylon (print base) Classicbac Twenty Year Commercial Limited Warranty

Environmental

Recycled Content **Pre-consumer - <1%, Post-consumer - 0%**

Specifications are subject to nominal manufacturing variance.
Material supply and/or manufacturing processes may necessitate changes without notice.