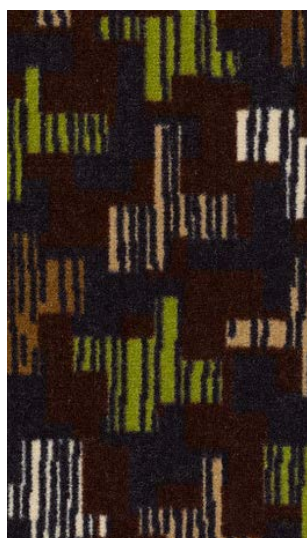
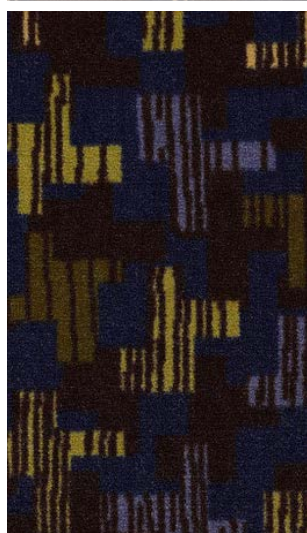


3650 Megabyte



3750 Data



3950 Web



3350 Wired

Style Name	IN-CROWD	
Collection Name	Hospitality Solutions	
Style Number	54603	
Product Type	Broadloom	
Construction	cut pile applied pattern	
Fiber	Eco Solution Q Print	
Dye Method	printed	
Primary Backing	Synthetic	
Secondary Backing	Classicbac	
Traffic Rating	Heavy	
	U.S.	Metric
Product Size	12 ft	3.66 m
Gauge	1/10 in	3937 per 10 cm
Stitches	13 per in	49 per 10 cm
Finished Pile Thickness	0.209 in	5.31 mm
Average Density	6201 oz/yd ³	
Total Thickness	0.331 in	8.41 mm
Tufted Weight	36 oz/yd ²	1220.6 g/m ²
Pattern Repeat	3 ft W X 3 ft L	91.44 cm W X 91.44 cm L



Recommended Installation Methods

Direct Glue

Performance Testing

Pill Test	Pass
Radiant Panel	Class I
NBS Smoke	Less than 450
Electrostatic Propensity	Less than 3.5 kv
CRI Greenlabel Plus	GLP8878
ADA Compliance	>0.6, meets the recommended static coefficient of friction for ADA walking surfaces and accessible routes

Warranties

Eco Solution Q Nylon (print base) Classicbac Twenty Year Commercial Limited Warranty

Environmental

Recycled Content	Pre-consumer - <1%, Post-consumer - 0%
------------------	----------------------------------------

Specifications are subject to nominal manufacturing variance.
Material supply and/or manufacturing processes may necessitate changes without notice.