



style: ingrain colors:

Interdeco

alterNATURE

DESIGN IS LUSH

shaw contract



The Shaw Contract Group design team seeks verdant inspiration. An avante garde runway show, cutting edge textile techniques, the weathered and worn bark of a tree. alterNATURE is a broadloom and tile collection of rich textural variations lifted from the natural world, exaggerated with a synthetic edge. The authenticity of nature in appearance and hand, engineering organic occurrence into the man made.

DESIGN IS LUSH.



Interdeco™

style: EARTH TONE TILE 59338 + INSETS OF INGRAIN TILE 59339

color: **balsa** 38103 + **balsa** 39103
installation method: monolithic



style: EARTH TONE TILE 59338

color: **balsa** 38103
installation method: monolithic



style: INGRAIN TILE 59339

color: **balsa** 39103
installation method: monolithic



style: **ENTWINE TILE** 59337

color: **burl** 78713
installation method: monolithic



style: **CORE** 5A178

color: **balsa** 78103
broadloom



style: **TIMBER** 5A180

color: **burl** 78713
broadloom



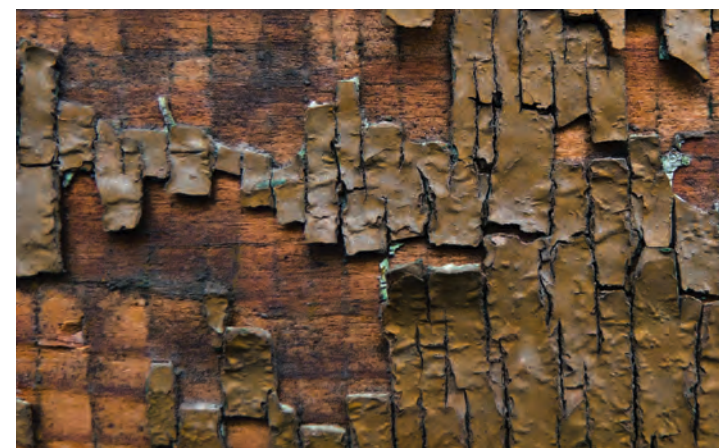
style: **GROUND**ED 5A190

color: **balsa** 38103
broadloom

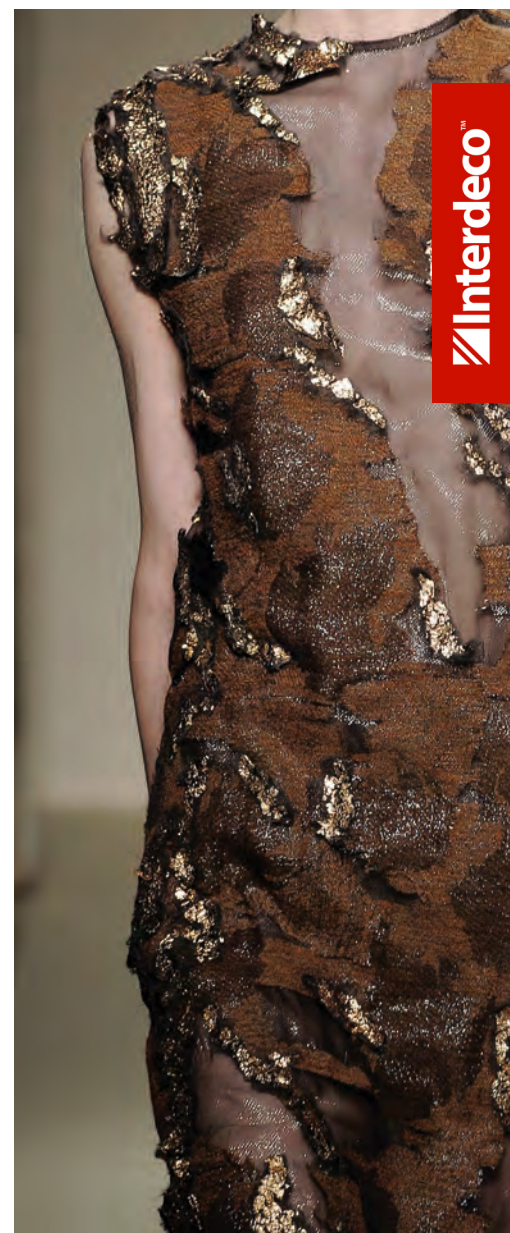
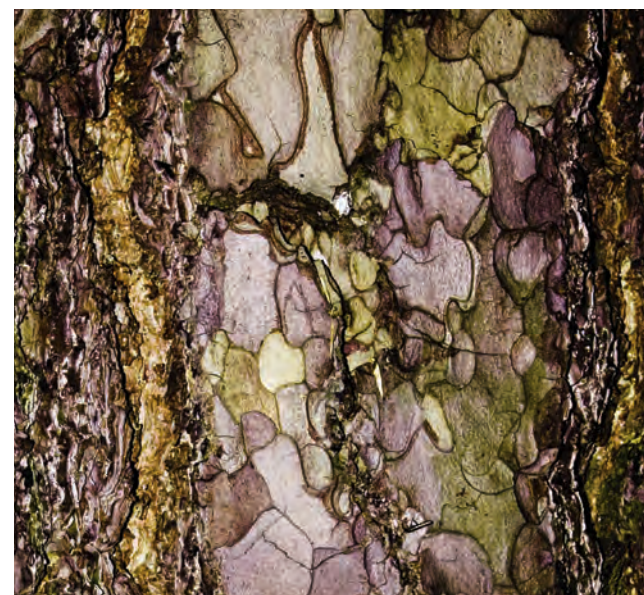


style: NATURAL SELECTION 5A179

color: **koa** 79505
broadloom



alterNATURE



Interdeco™

